



BNC (Isolated) Series

BNC (Isolated) Receptacle Connectors Commercial Type



- Intermateable with standard BNC plugs
- Available in Panel mounting and PCB mounting style
- Electrically isolated plastic housing
- Available in black or white plastic housing

SPECIFICATION, MATERIAL/FINISH

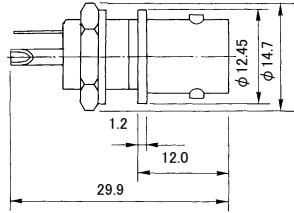
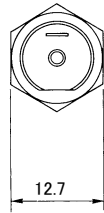
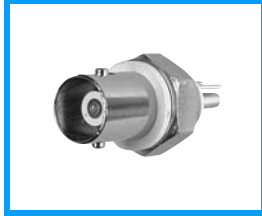
	Panel mounting type	
Connector style		
P/N	31-10	31-10T
Center conductor	Copper alloy/Silver plating (Round socket)	Copper alloy/Silver plating (Stamped tuning fork style socket)
Outer conductor	Zinc alloy/Nickel plating	Zinc alloy/Nickel plating
Housing	Noryl resin (UL94V-0)/White	
Dielectric withstanding voltage	1500V AC (rms) 1 minute	
Insulation resistance	5000M Ω min. at 500V DC	

BNC (Isolated) Series

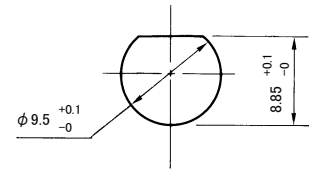
Unit : mm

■ Panel Mounting Type

31-10



Mounting Hole



Panel thickness: 4.3Max.

31-10T

