

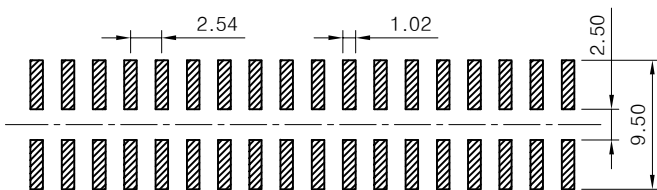
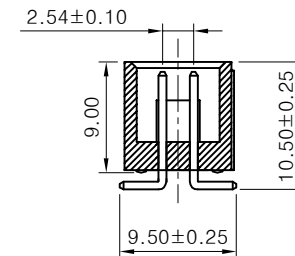
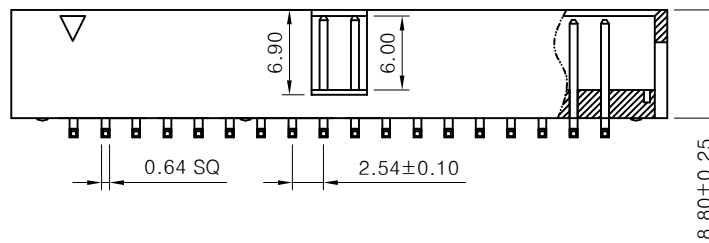
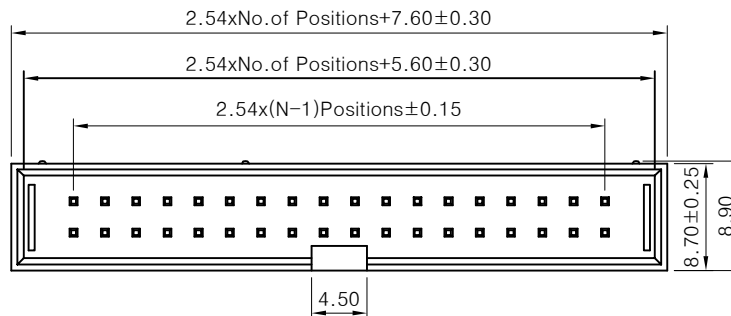


SPECIFICATIONS

Rated Current:3.0AMP
 Contact Resistance:20mΩ Max
 Withstand Voltage:1000V AC/DC
 Insulation Resistance:1000MΩ Min
 Operation Temperature:-40°C to +105°C

Contact Material:Brass
 Contact Plating:Au Over Ni
 Insulator Material:Polyester(UL94V-0) PA6T Black
 Max.Processing Temp: 230°C for 30-60 seconds
 (260°C for 10 seconds)

SQ PIN:0.64x12.8mm



Recommended P.C.B Layout(Top Side)
 (PCB BOARD TOLERANCE±0.05)

1

| | | | | | | | | | | |
|-----|------------|--------------------------|--------|-----------|-------|---------|--------|-------------------------------------|----------------|--|
| | | | | OPERATION | | DRAW | SCALE | FIT | 深圳市连盛精密连接器有限公司 | |
| | | | | X.X | ±0.30 | | UNIT | mm | | |
| | | | | CHECK | | APPROVE | SIZE | A4 | PART NO. | |
| | | | | X.XX | ±0.20 | | SHEET | 1/1 | BH-00014 | |
| A0 | 2014.04.16 | NEW DRAWING | | Angle | ±3° | PROJ. | TITLE: | 2.54BOX 34P SMT W9.50 L12.8 总高10.50 | | |
| REV | DATE | MODIFICATION DESCRIPTION | CHANGE | DIM | TOL | | | | | |