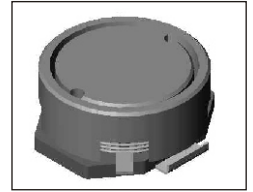


# SMT Power Inductor

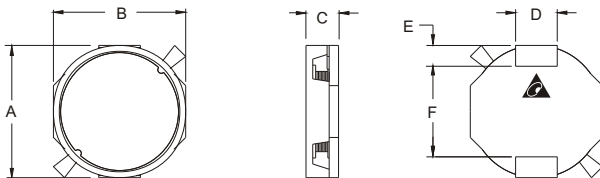
## SIWC1350 Type

### Features

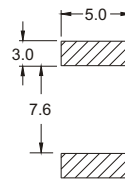
- RoHS compliant.
- Low profile (5.3mm max. height) SMD type.
- Magnetically shielded, suitable for high density mounting
- High energy storage and low DCR.
- Provided with embossed carrier tape packing.
- Ideal for power source circuits, DC-DC converter, DC-AC inverters inductor application.
- In addition to the standard versions shown here, customized inductors are available to meet your exact requirements.



### Mechanical Dimension:



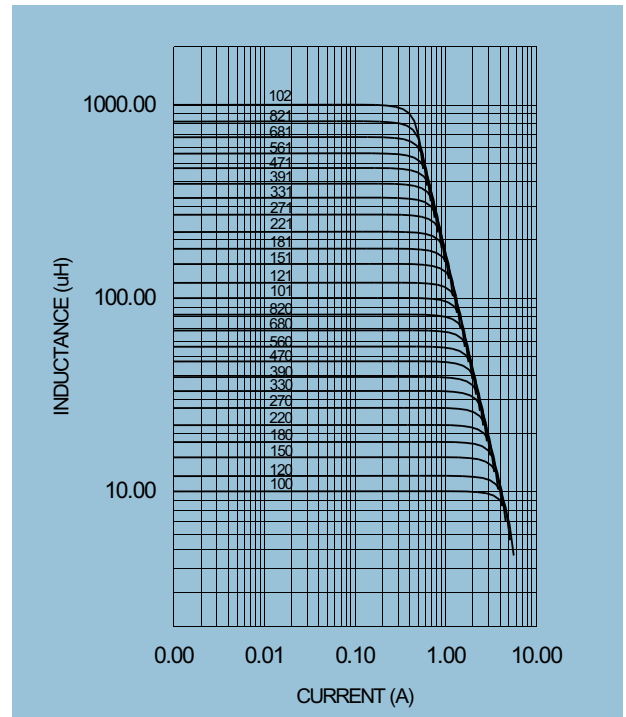
### RECOMMENDED PAD PATTERNS



UNIT:mm/inch  
 A = 13.0 / 0.512 Max.  
 B = 13.0 / 0.512 Max.  
 C = 5.0±0.3 / 0.197±0.012  
 D = 4.0 / 0.157  
 E = 2.0 / 0.079  
 F = 8.6±0.1 / 0.339±0.004

### Electrical Characteristics: 25°C: 1KHz, 1V

PART NO.	L <sup>1</sup> (μH)	DCR (Ω)MAX	I <sub>rated</sub> <sup>2</sup> (A <sub>dc</sub> )
SIWC1350 - 100	10	0.024	3.20
SIWC1350 - 120	12	0.026	3.00
SIWC1350 - 150	15	0.031	2.60
SIWC1350 - 180	18	0.033	2.50
SIWC1350 - 220	22	0.041	2.20
SIWC1350 - 270	27	0.047	2.00
SIWC1350 - 330	33	0.065	1.80
SIWC1350 - 390	39	0.077	1.60
SIWC1350 - 470	47	0.082	1.50
SIWC1350 - 560	56	0.100	1.30
SIWC1350 - 680	68	0.116	1.20
SIWC1350 - 820	82	0.136	1.10
SIWC1350 - 101	100	0.171	1.00
SIWC1350 - 121	120	0.214	0.91
SIWC1350 - 151	150	0.239	0.84
SIWC1350 - 181	180	0.293	0.76
SIWC1350 - 221	220	0.362	0.65
SIWC1350 - 271	270	0.441	0.61
SIWC1350 - 331	330	0.512	0.56
SIWC1350 - 391	390	0.569	0.50
SIWC1350 - 471	470	0.724	0.46
SIWC1350 - 561	560	0.863	0.39
SIWC1350 - 681	680	1.124	0.38
SIWC1350 - 821	820	1.319	0.33
SIWC1350 - 102	1000	1.582	0.29



1. Tolerance of inductance : ± 20%.
2. I<sub>rated</sub> is the DC current which cause the inductance drop less than 20% of its nominal inductance without current and the surface temperature of the part increase less than 45°C.
3. Operating temperature: -20°C to 105°C (including self-temperature rise).



**DELTA ELECTRONICS, INC.**

(TAOYUAN PLANT CPBG) 252, SAN YING ROAD, KUEISAN INDUSTRIAL ZONE, TAOYUAN SHIEN, 333, TAIWAN, R.O.C.

TEL: 886-3-3591968; FAX: 886-3-3591991

<http://www.deltawww.com>