

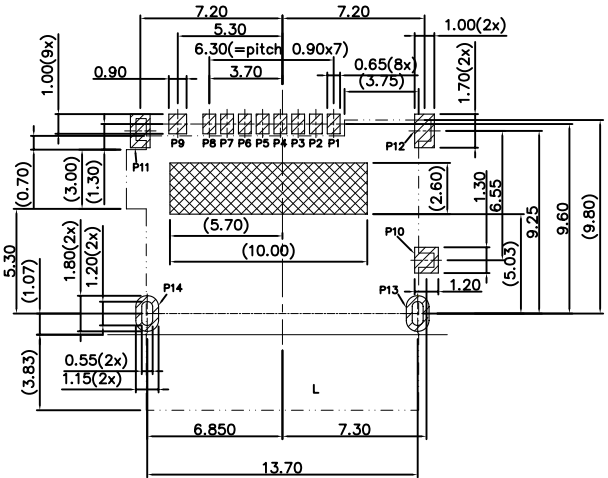
PIN NUMBER	PIN DEFINE
PIN 1	MICRO SD_DAT2
PIN 2	MICRO SD_CD/DAT3
PIN 3	MICRO SD_CMD
PIN 4	MICRO SD_VDD
PIN 5	MICRO SD_CLK
PIN 6	MICRO SD_VSS
PIN 7	MICRO SD_DAT0
PIN 8	MICRO SD_DAT1
PIN 9	MICRO SD_CD
PIN 10	GND
PIN 11,12,13,14	GND

CARD DETECT SWITCH OPEN/CLOSE FOR MICRO SD CARD POSITION

	UN-INSERTION	CARD DETECT SWITCH
CARD UNINSERTION	OPEN	
CARD HALF INSERTION	OPEN	
CARD INSERTION	CLOSE	

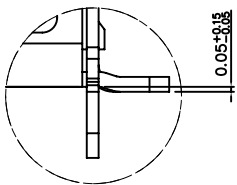
N/O

$\begin{matrix} \text{---} & \text{---} \\ | & | \\ \text{---} & \text{---} \end{matrix}$ P10 P9
 $\begin{matrix} \text{---} & \text{---} \\ | & | \\ \text{---} & \text{---} \end{matrix}$ P10 P9
 $\begin{matrix} \text{---} & \text{---} \\ | & | \\ \text{---} & \text{---} \end{matrix}$ P10 P9



RECOMMENDED PCB LAYOUT(TOP VIEW)
GENERAL TOLERANCE: ±0.05

- PAD AREA
- NO COPPER AREA
- KEEP OUT AREA



DETAIL A
SCALE 5:1

- NOTES:
- MATERIAL:
 - 1.1 PLASTIC: LCP , UL 94V-0, COLOR: BLACK
 - 1.2 CONTACT: COPPER ALLOY (C5210)
 - 1.3 SHELL: STAINLESS STEEL (SUS304)
 - FINISH:
 - 2.1 TERMINAL: 50u" MIN. NICKEL PLATED OVERALL
 - 2.2 CONTACT: Au 1u"
 - 2.3 TAIL: 100u" MATT-TIN PLATED
 - 2.4 SHELL: 50u" MIN. NICKEL PLATED OVERALL
 - PRODUCT MUST CONFORM TO RoHS AND HALOGEN FREE REQUIREMENT

深圳市华宇创精密电子有限公司			
TOLERANCE: X.X ±0.30 X.XX ±0.25 X.XXX ±0.15 X' ±2' X.X' ±0.5'	DRAWN BY :	DATE :	PART NAME:
	陈一鸣	2014-02-23	TF PUSH 1.5H
UNIT: mm [inch] SCALE:1:1 SIZE: A4	CHECKED BY :	DATE :	PART NO.
	马跃	2014-02-23	HWCW140-TF09-150B
	APPROVED BY :	DATE :	DRAW NO:
	邱敏	2014-02-23	HYC-2205311708
			SHEET NO.
			1 OF 1