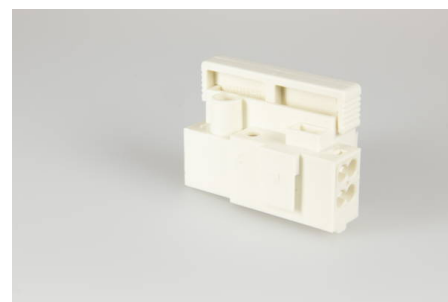




## Fused Connectors

### 900 SI/ 1

Screw-screwless-Terminal Block, 1 pole, Fixing: Screw, Voltage Rating: 400 V, Current Rating: 6.3 A



## Order Info

<b>Reference Number (ref. no.)</b>	175001
<b>Applications</b>	Lighting, Electrical Appliances
<b>PU</b>	100
<b>EAN</b>	4028012108077

## Type

<b>Type</b>	Screw-screwless-Terminal Block
<b>Number of poles</b>	1 pole
<b>Clamping Units per Pole</b>	4
<b>Colour</b>	white
<b>Connection Type</b>	Screw-screwless

## Technical Data

<b>Voltage Rating</b>	400 V
<b>Current Rating</b>	6.3 A
<b>Insulating Material</b>	PA 6.6
<b>Contact Material</b>	Brass
<b>Flammability Rating</b>	V-2
<b>max. Ambient Temperature Operation</b>	70 °C
<b>Assembly Contact Screw</b>	0.8x4.0 / $\varnothing$ 0.5 Nm
<b>Internal Core Cross-Section max.</b>	1.5 mm <sup>2</sup>
<b>External Core Cross-Section min.</b>	0.5 mm <sup>2</sup>
<b>External Core Cross-Section max.</b>	4.0 mm <sup>2</sup>
<b>Internal Stripping Length</b>	7.0-7.5 mm
<b>External Stripping Length</b>	8.0-8.5 mm
<b>Fixing</b>	Screw
<b>Internal Core Cross-Section min.</b>	0.5 mm <sup>2</sup>
<b>Type of Conductor Solid External</b>	yes
<b>Type of Conductor Flexible External</b>	yes
<b>Type of Conductor Solid Internal</b>	yes
<b>Type of Conductor Stranded Internal</b>	yes

## Accessories

---

**ZEL 110**

196420

---