

PLEASE CHECK WWW.MOLEX.COM FOR LATEST PART INFORMATION

Part Number: [0757051803](#)
Status: **Active**
Overview: GbX I-Trac™ Backplane Connector System
Description: GbX I-Trac™ Vertical Header Module, 1.85mm by 3.70mm Pitch, Unguided, Open Ends, 11 Rows, 8 Columns, 176 Circuits, Mating Pin Length 4.70mm

Documents:

[Drawing \(PDF\)](#) [Packaging Specification PK-70873-587 \(PDF\)](#)
[Product Specification PS-75710-999 \(PDF\)](#) [RoHS Certificate of Compliance \(PDF\)](#)

Agency Certification

UL E29179

General

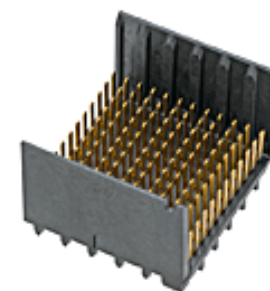
Product Family Backplane Connectors
 Series [75705](#)
 Application Backplane, Midplane, Orthogonal
 Component Type PCB Header
 Overview [GbX I-Trac™ Backplane Connector System](#)
 Product Name GbX I-Trac™
 UPC 887191383675

Physical

Circuits (Loaded) 176
 Circuits (maximum) 176
 Color - Resin Black
 Durability (mating cycles max) 200
 First Mate / Last Break No
 Flammability 94V-0
 Guide to Mating Part No
 Keying to Mating Part None
 Material - Metal High Performance Alloy (HPA)
 Material - Plating Mating Gold
 Material - Plating Termination Tin
 Material - Resin High Temperature Thermoplastic
 Net Weight 5.538/g
 Number of Columns 8
 Number of Pairs 6, Open Pin Field
 Number of Rows 11
 Orientation Vertical
 PC Tail Length 2.10mm
 PCB Locator No
 PCB Retention None
 PCB Thickness - Recommended 1.60mm
 Packaging Type Tray
 Pitch - Mating Interface 1.85mm, 3.70mm
 Pitch - Termination Interface 1.00mm, 2.70mm
 Plating min - Mating 0.762µm
 Plating min - Termination 0.762µm
 Polarized to PCB No
 Stackable Yes
 Surface Mount Compatible (SMC) Yes
 Temperature Range - Operating -55°C to +80°C
 Termination Interface: Style Through Hole - Compliant Pin

Electrical

Current - Maximum per Contact 1.0A



Series image - Reference only

EU ELV

Not Relevant

EU RoHS

Compliant

China RoHS

REACH SVHC

Not Contained Per
 -ED/79/2015 (17
 December 2015)

Halogen-Free

Status

Low-Halogen

Need more information on product environmental compliance?

Email productcompliance@molex.com
 Please visit the [Contact Us](#) section for any non-product compliance questions.

China ROHS
 ELV

Green Image
 Not Relevant

Search Parts in this Series

[75705](#) Series

Mates With

[75710](#) GbX I-Trac™ Right Angle Receptacle Module

Use With

[78232](#) GbX I-Trac™ Vertical Power Receptacle. [75234](#) Backplane Free Standing Guide Pin

Application Tooling | FAQ

Tooling specifications and manuals are found by selecting the products below. Crimp Height Specifications are then contained in the Application Tooling Specification document.

Global

Description

Product #

| | |
|-------------------------|------------------|
| Data Rate | 12.0 Gbps |
| Real Signals (per 25mm) | 148 |
| Shield Type | N/A |
| Shielded | No |
| Voltage - Maximum | 120V AC (RMS)/DC |

Solder Process Data

| | |
|------------------------------|-----|
| Lead-free Process Capability | N/A |
|------------------------------|-----|

Material Info**Reference - Drawing Numbers**

| | |
|-------------------------|--------------|
| Packaging Specification | PK-70873-587 |
| Product Specification | PS-75710-999 |
| Sales Drawing | SD-75705-001 |

| | |
|--|-------------------|
| Backplane Insertion Tool for Signal | <u>0621005110</u> |
| Contact Insertion Press-In Tool for Vertical Header 11-Row, 8-Column | <u>0622018617</u> |

This document was generated on 06/10/2016

PLEASE CHECK WWW.MOLEX.COM FOR LATEST PART INFORMATION