

PBB11C Series

AC/DC HIGH SURGE SUPPLY

FEATURES

- 100W - 240W
- High Surge Current
- Ideal for Motors and Pumps
- Chassis Mounting with Molex Style Connector
- Optional Screw terminal block
- Rugged PCB
- Harmonic Attenuator
- Optional Remote ON/OFF
- Optional Conformal Coating



SPECIFICATIONS

INPUT	
Voltage range	85-264Vac or 120-370Vdc
Frequency	47-63Hz or DC.
OUTPUT	
Output Voltage	24Vdc, 36Vdc, 48Vdc
DC adjustment range	See table.
Output Power	100W, 150W, 240W
Remote On/Off	Option R: Remote ON/OFF
Ripple and noise	24V and 36V: 150mVp-p max 48V: 250mVp-p max.
Line regulation	48mV max.
Load regulation	24V: 76mV max. 36V: 90mV max. 48V: 150mV max.
Startup time	500ms max.
Holdup time	20ms typical
Peak load	10 sec, 35% duty cycle
Efficiency	85%
PROTECTION	
Over voltage protection	115% - 140% of rating.
Over current protection	Over 101% of peak current.
Isolation	Input - Output: 3kVac, 1min Input - Ground: 2kVac, 1min Output - Ground: 500Vac, 1min

ENVIRONMENT	
Operating temperature	-10°C to 70°C (Refer to derating curve, consult Powerbox sales).
Humidity	20 – 90% RH Non-Condensing.
Vibration	10Hz-55Hz 19.6m/s ² (2G) 3 mins x, y and z axes.
Impact	196.1m/s ² (20G), once along x, y and z axes.

STANDARDS & APPROVALS	
Safety standards	EN60950-1, EN50178, UL60950-1 and C-UL(CSA60950-1) Complies with DEN-AN and IEC60950-1(AC input only).
C-Tick	AS/NZS CISPR11 Group 1 Class A.
EMC standards	EN61204-3, EN61000-6-2, EN61000-3-2, EN61000-4-2,-3,-4,-5,-6,-8,-11
EMI standards	FCC-B, CISPR22-B, EN55022-B, VCCI-B
CE Marking	Complies with LVD and EMC Directives

MECHANICAL	
Case size	Standard models with "SN" Chassis & Cover PBB11C-M (100W): 85 x 46 x 252mm PBB11C-R (150W): 95 x 51 x 252mm PBB11C-E (240W): 108 x 58 x 252mm
Cable harness	Input and output harness supplied, RoHS compliant CN1: Input Connector; Harness: H-IN-10-R CN2: Output Connector; Harness: H-OU-10-R CN3: Remote On/Off Connector; Harness: H-RC-1 View Technical Illustration
Terminal Block	Option T: Vertical Terminal Block screw termination

PBB11C Series

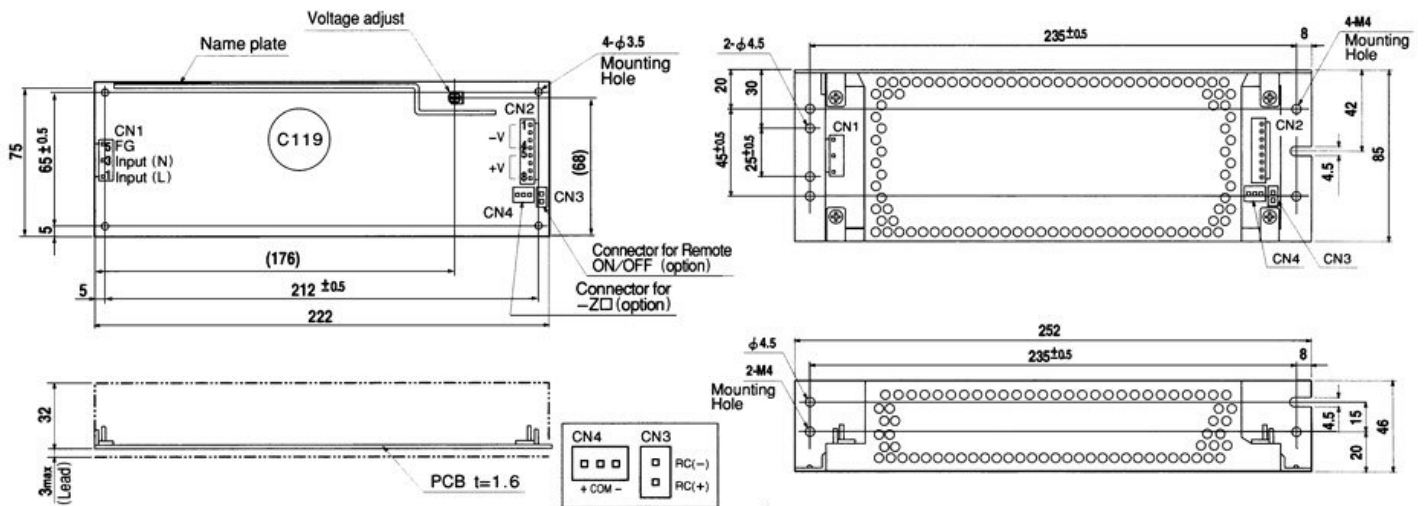
AC/DC HIGH SURGE SUPPLY

SELECTION TABLE

MODEL NUMBER	OUTPUT VOLTAGE	VOLTAGE ADJ.	OUTPUT CURRENT	PEAK CURRENT	POWER
PBB11C-24M-SN	24Vdc	21.4 - 26.4V	4.2A	7A	100W
PBB11C-36M-SN	36Vdc	26.4 - 39.6V	2.8A	4.7A	100W
PBB11C-48M-SN	48Vdc	39.6 - 52.8V	2.1A	3.5A	100W
PBB11C-24R-SN	24Vdc	21.4 - 26.4V	6.3A	12A	150W
PBB11C-36R-SN	36Vdc	26.4 - 39.6V	4.2A	8A	150W
PBB11C-48R-SN	48Vdc	39.6 - 52.8V	3.2A	6A	150W
PBB11C-24E-SN	24Vdc	21.4 - 26.4V	10A	20A	240W
PBB11C-36E-SN	36Vdc	26.4 - 39.6V	6.7A	13.4A	240W
PBB11C-48E-SN	48Vdc	39.6 - 52.8V	5A	10A	240W

TECHNICAL ILLUSTRATIONS

PBB11C-M 100W



(PIN CONNECTION)

I / O Connector	Mating Connector	Terminal
CN1	B3P5-VH	VHR-5N
		Chain: SVH-21T-P1.1 Loose: BVH-21T-P1.1
CN2	B8P-VH	VHR-8N
		Chain: SVH-21T-P1.1 Loose: BVH-21T-P1.1
CN3 (Option)	B2B-XH-A	XHP-2
		Chain: SXH-001T-P0.6 Loose: BXH-001T-P0.6
CN4 (Option)	B3B-XH-A	XHP-3
		Chain: SXH-001T-P0.6 Loose: BXH-001T-P0.6

(Mfr: J.S.T.)

Pin No.	Input
1	AC(L)
2	
3	AC(N)
4	
5	FG

Pin No.	Output
1, 2, 3, 4	-V
5, 6, 7, 8	+V

Pin No.	Remote ON/OFF
1	RC(+)
2	RC(-)

Pin No.	-Z □
1	+
2	COM
3	-

- ※Weight: 380g or less
(Without chassis and cover)
- ※Tolerance: ±1
- ※Dimensions in mm.
- ※PCB Material : CEM3
- ※Chassis and cover is optional.
- ※Mounting torque: 1.5N · m(16kgf · cm)max

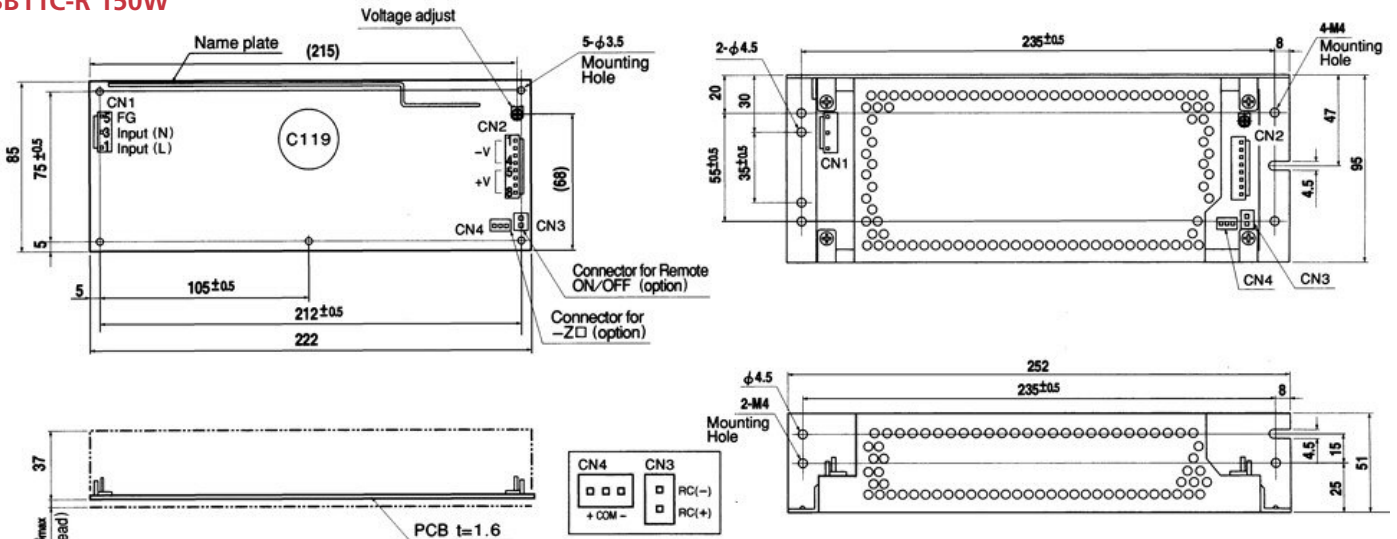
※Keep drawing current per pin below 5A(7A at peak load)for CN2

PBB11C Series

AC/DC HIGH SURGE SUPPLY

TECHNICAL ILLUSTRATIONS

PBB11C-R 150W



I / O Connector	Mating Connector	Terminal
CN1	B3P5-VH	VHR-5N
CN2	B8P-VH	VHR-8N
CN3 (Option)	B2B-XH-A	XHP-2
CN4 (Option)	B3B-XH-A	XHP-3

CN1	
Pin No.	Input
1	AC(L)
2	AC(N)
3	AC(N)
4	AC(N)
5	FG

CN2	
Pin No.	Output
1, 2, 3, 4	-V
5, 6, 7, 8	+V

CN3 (Option)	
Pin No.	Remote ON/OFF
1	RC(+)
2	RC(-)

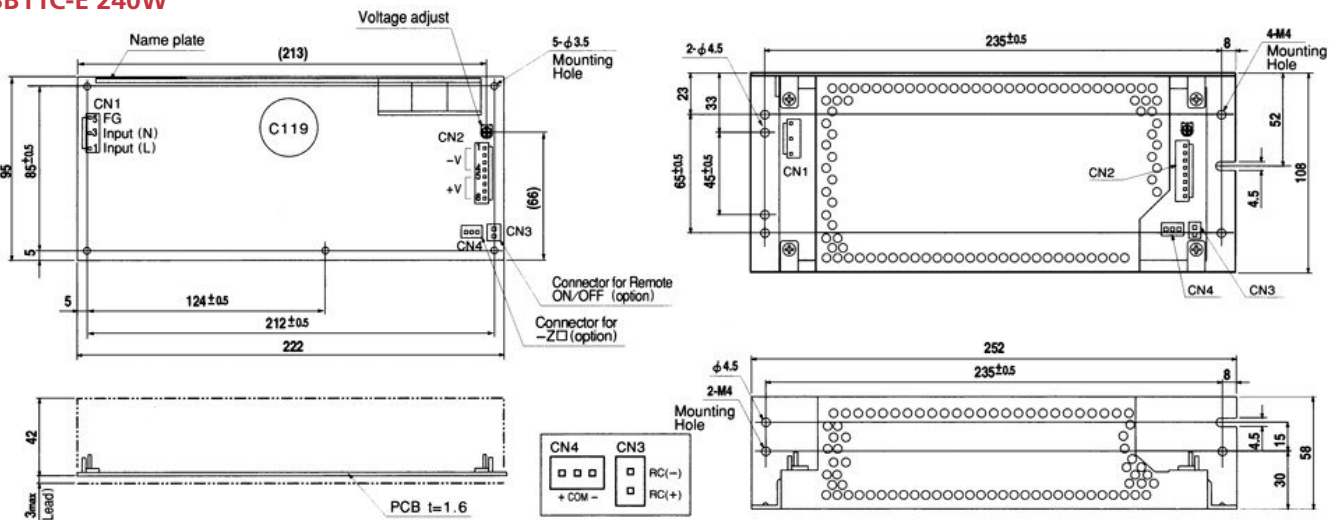
CN4 (Option)	
Pin No.	-Z □
1	+
2	COM
3	-

(Mfr: J.S.T.)

※Keep drawing current per pin below 5A(7A at peak load)for CN2

- ※Weight: 490g or less (Without chassis and cover)
- ※Tolerance: ±1
- ※Dimensions in mm.
- ※PCB Material : CEM3
- ※Chassis and cover is optional.
- ※Mounting torque: 1.5N · m(16kgf · cm)max

PBB11C-E 240W



I / O Connector	Mating Connector	Terminal
CN1	B3P5-VH	VHR-5N
CN2	B8P-VH	VHR-8N
CN3 (Option)	B2B-XH-A	XHP-2
CN4 (Option)	B3B-XH-A	XHP-3

CN1	
Pin No.	Input
1	AC(L)
2	AC(N)
3	AC(N)
4	AC(N)
5	FG

CN2	
Pin No.	Output
1, 2, 3, 4	-V
5, 6, 7, 8	+V

CN3 (Option)	
Pin No.	Remote ON/OFF
1	RC(+)
2	RC(-)

CN4 (Option)	
Pin No.	-Z □
1	+
2	COM
3	-

(Mfr: J.S.T.)

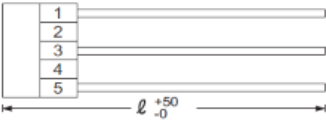
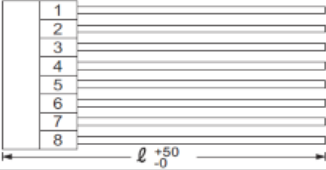
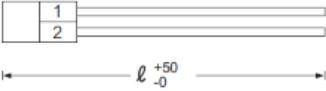
※Keep drawing current per pin below 5A(7A at peak load)for CN2

- ※Weight: 690g or less (Without chassis and cover)
- ※Tolerance: ±1
- ※Dimensions in mm.
- ※PCB Material : CEM3
- ※Chassis and cover is optional.
- ※Mounting torque: 1.5N · m(16kgf · cm)max

PBB11C Series

AC/DC HIGH SURGE SUPPLY

PBB11C CABLES - ROHS COMPLIANT

<p>●Model number</p> <h3>H-IN-10</h3> <p>Housing : VHR-5N (J.S.T.) Pin : SVH-21T-P1.1 (J.S.T.) Weight : 30g max</p>	<p>●Type</p> 	<p>●Wire</p> <table border="1"> <thead> <tr> <th>Pin #</th> <th>Wire</th> <th>AWG</th> <th>Color</th> <th>Length l (mm)</th> </tr> </thead> <tbody> <tr> <td>1</td> <td>UL1015</td> <td>18</td> <td>black</td> <td>500</td> </tr> <tr> <td>2</td> <td></td> <td></td> <td></td> <td></td> </tr> <tr> <td>3</td> <td>UL1015</td> <td>18</td> <td>white</td> <td>500</td> </tr> <tr> <td>4</td> <td></td> <td></td> <td></td> <td></td> </tr> <tr> <td>5</td> <td>UL1015</td> <td>18</td> <td>green/yellow</td> <td>500</td> </tr> </tbody> </table>	Pin #	Wire	AWG	Color	Length l (mm)	1	UL1015	18	black	500	2					3	UL1015	18	white	500	4					5	UL1015	18	green/yellow	500
Pin #	Wire	AWG	Color	Length l (mm)																												
1	UL1015	18	black	500																												
2																																
3	UL1015	18	white	500																												
4																																
5	UL1015	18	green/yellow	500																												
<p>●Model number</p> <h3>H-OU-10</h3> <p>Housing : VHR-8N (J.S.T.) Pin : SVH-21T-P1.1 (J.S.T.) Weight : 80g max</p>	<p>●Type</p> 	<p>●Wire</p> <table border="1"> <thead> <tr> <th>Pin #</th> <th>Wire</th> <th>AWG</th> <th>Color</th> <th>Length l (mm)</th> </tr> </thead> <tbody> <tr> <td>1 - 4</td> <td>UL1015</td> <td>18</td> <td>black</td> <td>500</td> </tr> <tr> <td>5 - 8</td> <td>UL1015</td> <td>18</td> <td>red</td> <td>500</td> </tr> </tbody> </table>	Pin #	Wire	AWG	Color	Length l (mm)	1 - 4	UL1015	18	black	500	5 - 8	UL1015	18	red	500															
Pin #	Wire	AWG	Color	Length l (mm)																												
1 - 4	UL1015	18	black	500																												
5 - 8	UL1015	18	red	500																												
<p>●Model number</p> <h3>H-RC-1</h3> <p>Housing : XHP-2 (J.S.T.) Pin : SXH-001T-P0.6 (J.S.T.) Weight : 7g max</p>	<p>●Type</p> 	<p>●Wire</p> <table border="1"> <thead> <tr> <th>Pin #</th> <th>Wire</th> <th>AWG</th> <th>Color</th> <th>Length l (mm)</th> </tr> </thead> <tbody> <tr> <td>1</td> <td>UL1007</td> <td>22</td> <td>orange</td> <td>500</td> </tr> <tr> <td>2</td> <td>UL1007</td> <td>22</td> <td>blue</td> <td>500</td> </tr> </tbody> </table>	Pin #	Wire	AWG	Color	Length l (mm)	1	UL1007	22	orange	500	2	UL1007	22	blue	500															
Pin #	Wire	AWG	Color	Length l (mm)																												
1	UL1007	22	orange	500																												
2	UL1007	22	blue	500																												