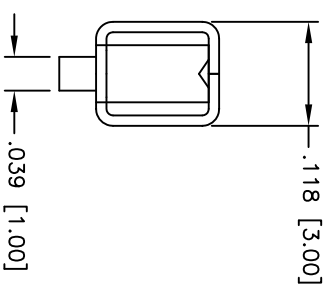
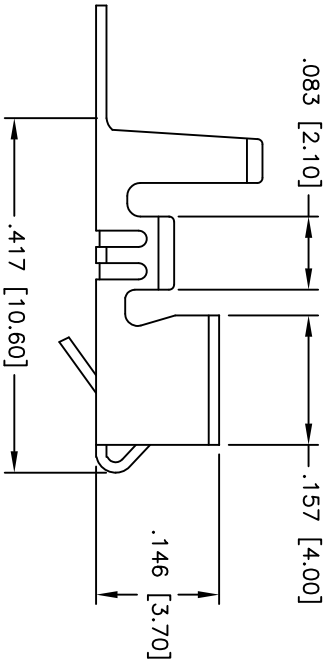
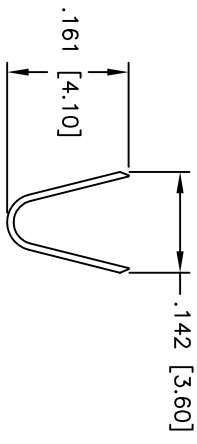
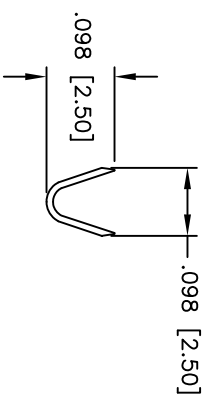
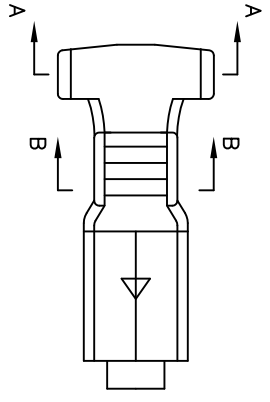


Rev	AWO #	Description	Date	Appr
-		RELEASED	4/12/05	

APPROVED: \_\_\_\_\_  
 DATE: \_\_\_\_\_ TITLE: \_\_\_\_\_



**SPECIFICATIONS:**

- Material: Brass
- Contact: Brass
- Plating: Matt Tin over Nickel underplate overall
- Electrical:
  - Wire range: 18-24 AWG
  - Operating voltage: 250 VAC max
  - Current rating: 5 Amps max
  - Insulation resistance: 1,000 Mohms min
  - Dielectric withstanding voltage: 1,500 VAC for 1 minute
- Temperature Rating:
  - Operating temperature: -25°C to +85°C
  - Environmental: Lead free, RoHS compliant

UNLESS OTHERWISE SPECIFIED ALL DIMENSIONS ARE INCHES [MM]	
TOLERANCES: EXCEPT AS NOTED	
INCHES	HOLDS
.X ± .10	ØXX ± .10
.XX ± .020	ØXXX ± .015
.XXX ± .015	ØXXXX ± .010
APPROVALS	DATE
DRAWN SS	4/12/05
CHECKED	
APPROVED	

**ADAM TECH**  
 909 Rahway Avenue, Union, NJ 07083  
 Phone: 908-687-5000 Fax: 908-687-5710

**CRIMP CONTACT, ON REEL**

TITLE	SIZE	PART NO.	REV.
CRIMP CONTACT, ON REEL	X	MTC-C-MT-R	-
REF:	SCALE:	NTS	SHEET 1 OF 1