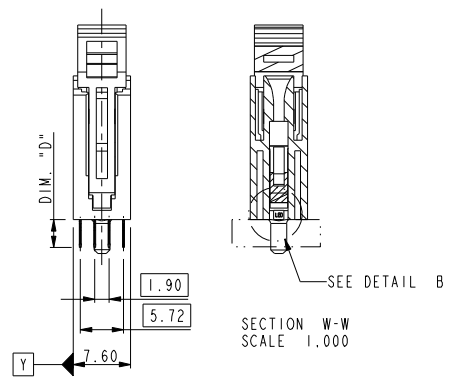
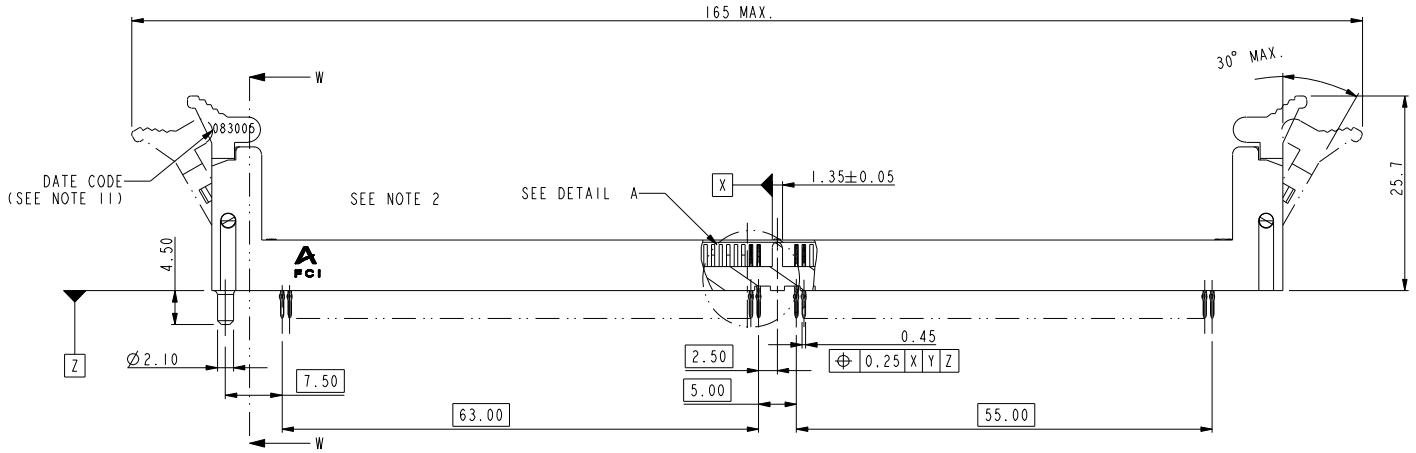
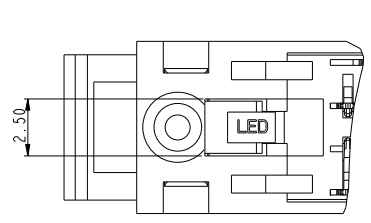
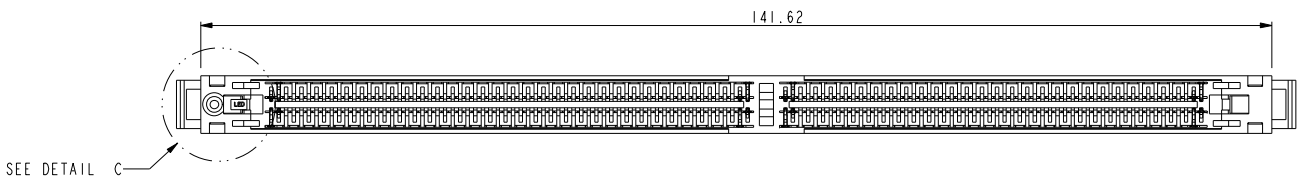


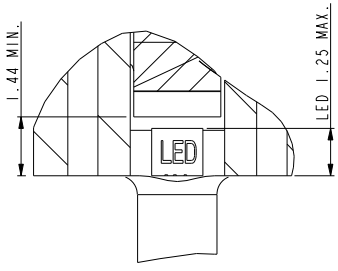
DETAIL A
SCALE 3.000



SECTION W-W
SCALE 1.000



DETAIL C
SCALE 3.000



DETAIL B
SCALE 5.000

| | | | |
|---|-----------|----|----------|
| Mark with 10034542 REV. P in area indicated by X..... | | | |
| rev | ecn no | dr | date |
| N | DG07-0306 | CS | 27/07/07 |
| P | DG07-0416 | CS | 22/10/07 |

| | | | | | | |
|--------------------|-------------|----------|---|---------------|--|-----------------|
| www.fciconnect.com | | | surface <input checked="" type="checkbox"/> | tolerance std | projection <input checked="" type="checkbox"/> | MM |
| | | | TOLERANCES UNLESS OTHERWISE SPECIFIED | | | |
| Dr | CHARLIE S | 02/10/04 | ANGULAR | 0.X ± .38 | size A4 | Scale 0.500 |
| Eng | CHARLIE S | 02/10/04 | LINEAR | 0.XX ± .25 | ECN | T04-0061 |
| Chr | HSIEH GARY | 02/10/04 | 0° ± 2° | 0.XXX ± .13 | Product family | Spec ref * |
| Appr | JOSEPH HSIA | 02/10/04 | Product family | | | |
| FCI | | | title DDR 11 240P PRESS-FIT | | | dwg no 10034542 |
| | | | catalog | | | Rev. P |

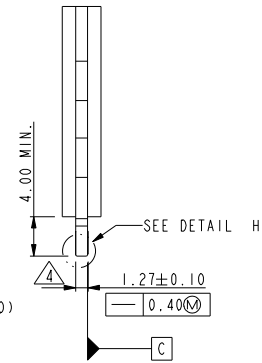
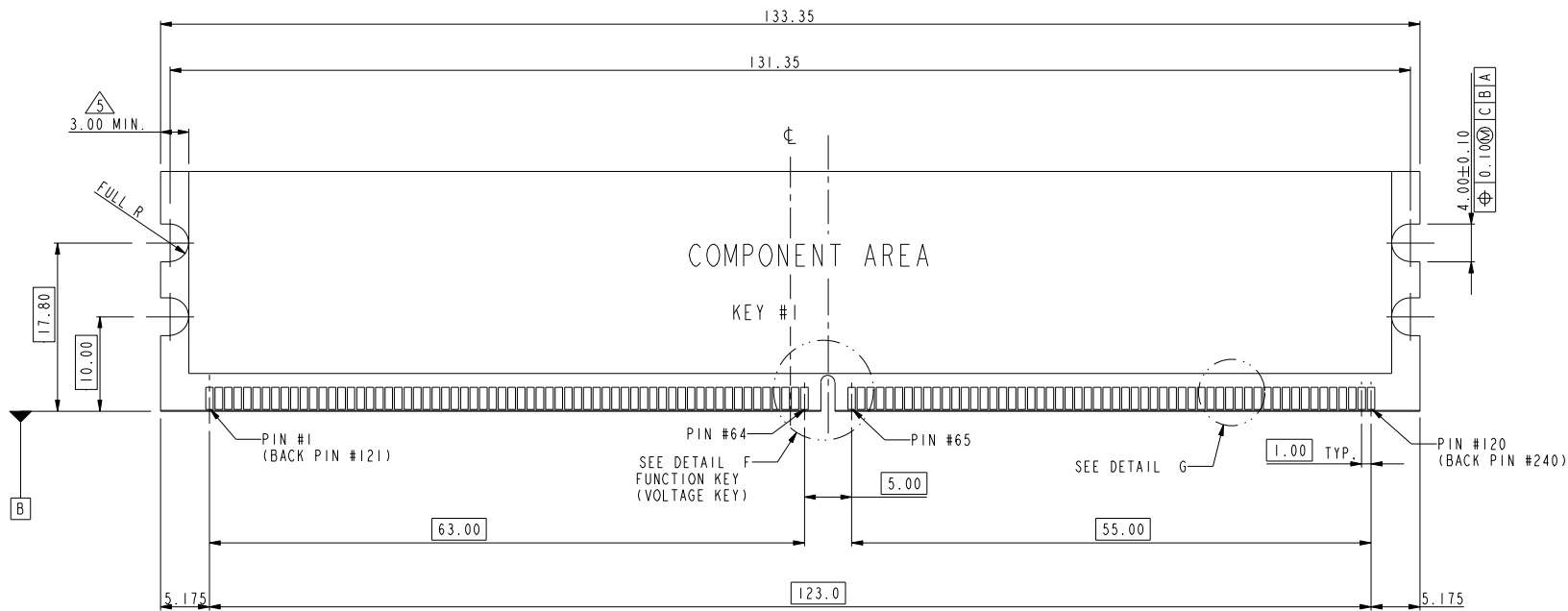
PDM: Rev:P

STATUS: Released

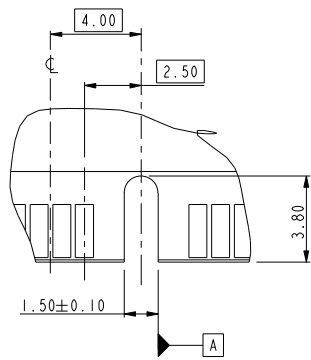
Printed: Jan 23, 2010



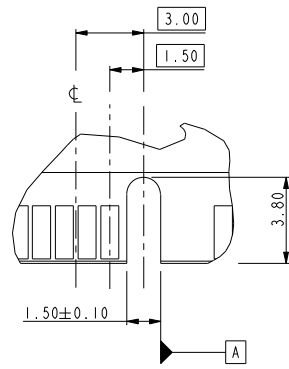
Copyright FCI.



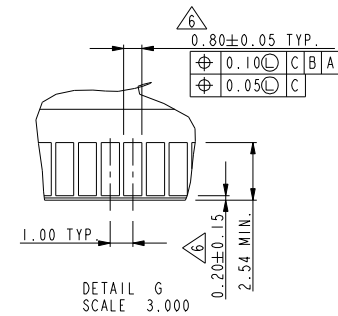
DETAIL H
SCALE 3.000
C0.10



DETAIL F
KEY POSITION #1
TYPE "C"



DETAIL F
KEY POSITION #1
TYPE "L"



NOTE:
1. MATERIAL : FR-4.
2. FINISH: SOLDER MASK.
3. BURR: 0.08 MAX.

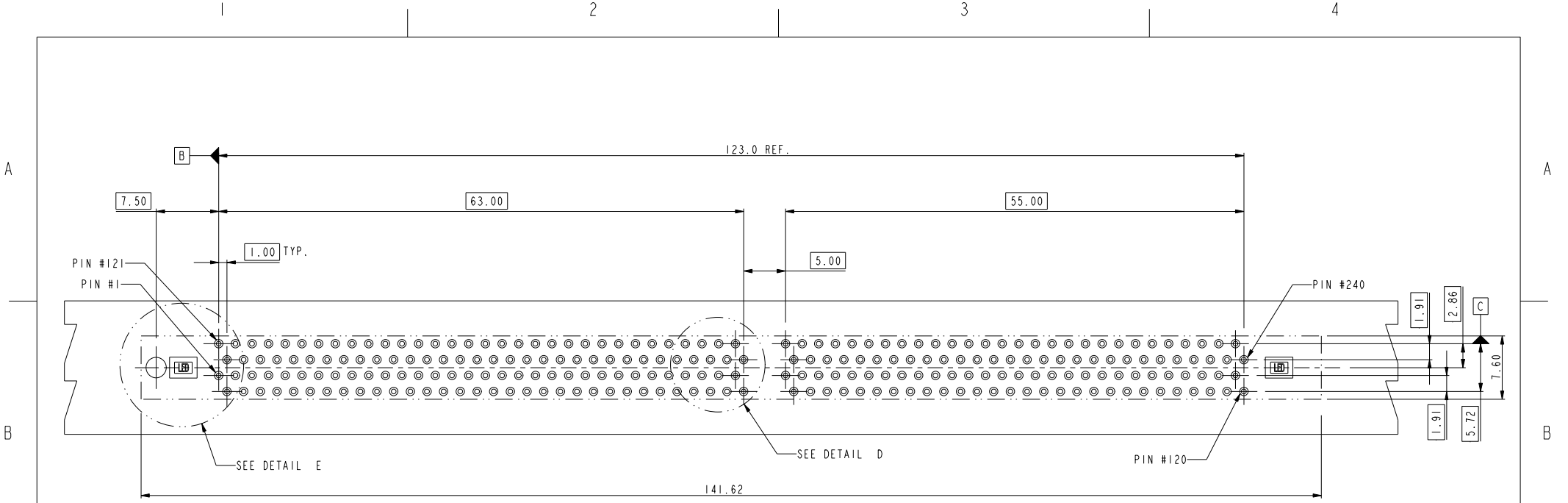
| | |
|----------------|-------------|
| TYPE "L" | 2.5 VOLTAGE |
| TYPE "C" | 1.8 VOLTAGE |
| SUB KEY POS #1 | DESCRIPTION |

| | |
|--------------------------------------|------------|
| tolerance unless otherwise specified | |
| linear | .X ± .38 |
| | .XX ± .25 |
| | .XXX ± .13 |
| angles | 0° ± 2° |

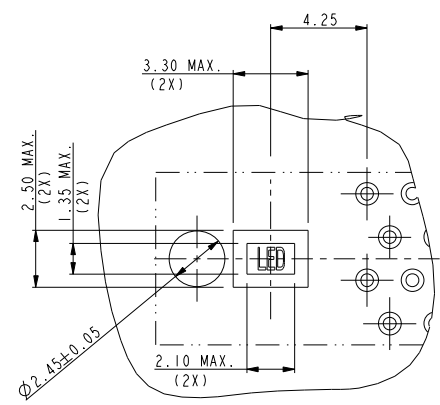
| | | | | |
|--|---------|-----------------------|---------------------------|------------------|
| | title | DDR II 240P PRESS-FIT | dwg no 10034542 | Rev. P |
| | catalog | PDM: Rev:P | | |



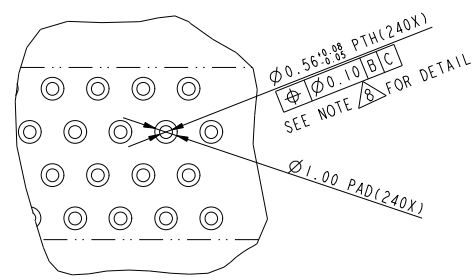
Copyright FCI.



RECOMMEND CIRCUIT BOARD HOLE LAYOUT



DETAIL E
SCALE 3.000



DETAIL D
SCALE 3.000

| | |
|--------------------------------------|------------|
| tolerance unless otherwise specified | |
| linear | .X ± .38 |
| | .XX ± .25 |
| | .XXX ± .13 |
| angles | 0° ± 2° |

| | | | |
|--|---------------------------------------|-------------------------------------|---------------------------------------|
| | title DDR II 240P PRESS-FIT | dwg no 10034542 | Rev. P |
| | catalog PDM: Rev-P | CUSTOMER STATUS: Released | sheet 3 of 4 Printed: Jan 23, 2010 |

Copyright FCI.

10034542-□ □ □ □

STYLE: MECHANICAL KEYING

1 : 1.8 VOLT. W/CENTER KEY #1
2 : 2.5 VOLT. W/LEFT KEY #1

REVISE

0

TAIL LENGTH

| CODE | DIM. "D" |
|------|----------|
| 0 | 3.30 |
| 1 | 3.70 |
| 2 | 4.20 |

PLATING

| CODE | CONTACT | TAIL AREA | UNDERPLATE | CODE | CONTACT | TAIL AREA | UNDERPLATE |
|------|--|---------------------------|---|------|--|--------------------------------|---|
| 2 | 15u" (0.38um) MIN. GOLD | 35u"~100u" Tin PLATING | 50u" (1.27um) MIN. NICKEL OVERALL | 2B | 15u" (0.38um) MIN. GOLD | 35u"~100u" Tin/Lead PLATING | 50u" (1.27um) MIN. NICKEL OVERALL |
| 3 | 30u" (0.76um) MIN. GOLD | | | 3B | 30u" (0.76um) MIN. GOLD | | |
| 4 | 3u" (0.076um) MIN. GOLD | | | 4B | 3u" (0.076um) MIN. GOLD | | |
| 6 | 15u" (0.38um) MIN. GOLD (LUBRICATED) | 35u"~100u" Tin PLATING | 50u" (1.27um) MIN. NICKEL OVERALL | 6B | 15u" (0.38um) MIN. GOLD (LUBRICATED) | 35u"~100u" Tin/Lead PLATING | 50u" (1.27um) MIN. NICKEL OVERALL |
| 7 | 30u" (0.76um) MIN. GOLD (LUBRICATED) | | | 7B | 30u" (0.76um) MIN. GOLD (LUBRICATED) | | |
| 8 | 3u" (0.076um) MIN. GOLD (LUBRICATED) | | | 8B | 3u" (0.076um) MIN. GOLD (LUBRICATED) | | |
| 2LF | 15u" (0.38um) MIN. GOLD | 35u"~100u" Tin PLATING | 50u" (1.27um) MIN. NICKEL OVERALL | | | | |
| 3LF | 30u" (0.76um) MIN. GOLD | | | | | | |
| 4LF | 3u" (0.076um) MIN. GOLD | | | | | | |
| 6LF | 15u" (0.38um) MIN. GOLD (LUBRICATED) | 35u"~100u" Tin PLATING | 50u" (1.27um) MIN. NICKEL OVERALL | | | | |
| 7LF | 30u" (0.76um) MIN. GOLD (LUBRICATED) | | | | | | |
| 8LF | 3u" (0.076um) MIN. GOLD (LUBRICATED) | | | | | | |

COLOR OF HOUSING AN EJECTOR

- 0 : BLACK HOUSING + IVORY EJECTOR
- 1 : BLACK HOUSING + AMBER EJECTOR
- 2 : BLACK HOUSING + BLACK EJECTOR
- 3 : BLUE HOUSING + IVORY EJECTOR
- 4 : BLUE HOUSING + AMBER EJECTOR

NOTE:

1. MATERIAL:
HOUSING: HIGH PERFORMANCE RESINS, GLASS FILLED UL94V-0 RATED, COLOR: BLACK.
EJECTOR: HIGH PERFORMANCE RESINS, GLASS FILLED UL94V-0 RATED, COLOR: NATURAL.
TERMINAL: COPPER ALLOY.
2. FCI LOGO TO BE APPROXIMATELY LOCATED AS SHOWN ON PRINT.
3. PRODUCT SPECIFICATION: GS-12-273
- △ CARD THICKNESS APPLIES ACROSS TABS AND INCLUDES PLATING AND / OR METALIZATION.
- △ 3.00mm MINIMUM APPLIES TO BOTH 4.00mm WIDE NOTCH LENGTH AND COMPONENT KEEPOUT AREA.
- △ LEADING EDGE OF CONTACT PADS SPECIFIED BY THE KEEP OUT ZONE SHALL BE FREE OF BURRS AND EXTERNAL TIE BARS.
FOR OPTIMUM PERFORMANCE, THE TIE BAR IS TO BE ON AN INTERNAL LAYER SO THAT THE REMNANT CANNOT CAUSE CONTACT DAMAGE.
7. PACKAGING SPECIFICATION; GS-14-528.
- △ ALL PTH SHOULD BE 0.66mm DIA DRILLED AND 0.025mm MIN. ELECTRO-DEPOSITED COPPER THK ON THROUGH HOLE WALL.
9. THIS PRODUCT MEETS EUROPEAN UNION DIRECTIVES AND OTHER COUNTRY REGULATIONS AS DESCRIBED IN GS-22-008.
10. THE HOUSING WILL WITHSTAND EXPOSURE TO 260° PEAK TEMPERATURE FOR 20 SECONDS IN A IR REFLOW OVEN.

△ DATE CODE: X X X X X X

YEAR
DATE
MONTH

| | | | | | |
|-----|---------|-----------------------|--------|----------|-----------|
| FCI | title | DDR 11 240P PRESS-FIT | dwg no | 10034542 | Rev. P |
| | catalog | PDM: Rev:P | | CUSTOMER | |