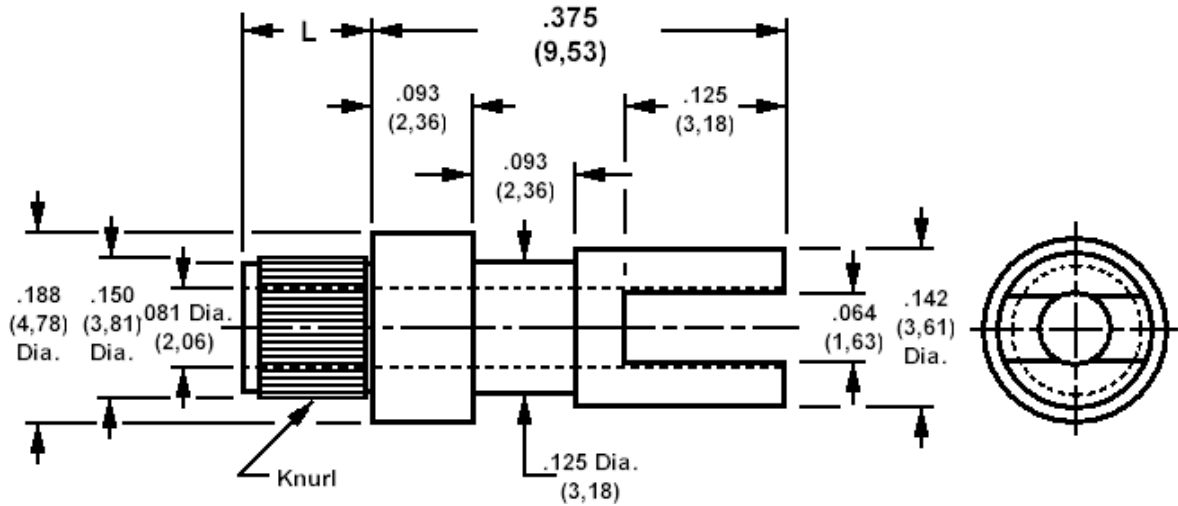


140-1578 Solder terminal, slotted, thru hole, knurled

Recommended mounting hole .154 (3,91), #23 drill



How to order code

140-1578-XX-YY-00

Basic Part No XX = L dimension, YY = Plating Finish

DIMENSIONS (XX)			
Basic Part No	(XX)	L	Board Thickness
140-1578	-02	.109 (2,77)	.062 (1,59)
	-03	.141 (3,58)	.094 (2,38)
	-04	.172 (4,37)	.125 (3,18)

MATERIALS			
Component	Material	Finish (YY)	
Terminal	Brass	-01	-05
		Silver	Electro Solder

SWAGE TOOLING	
Recommended Swaging Tools:-	
Anvil	435-6409-01-00-00
Roll punch	435-6609-01-00-00
Flare Punch	435-6664-01-00-00