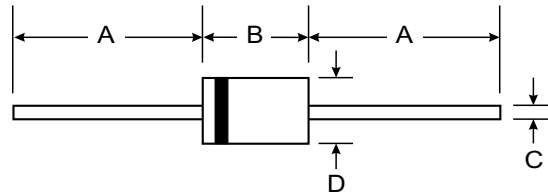


### Features

- High current capability
- High efficiency
- High surge capability
- High reliability
- Low power loss
- Low forward voltage drop
- Low cost
- **Pb / RoHS Free**



### Mechanical Data

- Case : DO-41 Molded plastic
- Epoxy : UL94V-O rate flame retardant
- Lead : Axial lead solderable per MIL-STD-202, Method 208 guaranteed
- Polarity : Color band denotes cathode end
- Mounting position : Any
- Weight : 0.339 gram

| DO-41                |       |       |
|----------------------|-------|-------|
| Dim                  | Min   | Max   |
| A                    | 25.40 | —     |
| B                    | 4.06  | 5.21  |
| C                    | 0.71  | 0.864 |
| D                    | 2.00  | 2.72  |
| All Dimensions in mm |       |       |

### Maximum Ratings and Electrical Characteristics

Rating at 25 °C ambient temperature unless otherwise specified.  
 Single phase, half wave, 60 Hz, resistive or inductive load.  
 For capacitive load derate current by 20%.

| RATING   | SYMBOL      | VALUE         | UNIT        |
|--|-------------|---------------|-------------|
| Maximum Recurrent Peak Reverse Voltage               | $V_{RRM}$   | 40            | V           |
| Maximum DC Blocking Voltage                          | $V_{DC}$    | 40            | V           |
| Maximum Average Forward Current $T_L = 115^{\circ}C$ | $I_{F(AV)}$ | 1.0           | A           |
| Maximum Non-Repetitive Peak Forward Surge Current    | $I_{FSM}$   | 50            | A           |
| Maximum Forward Voltage at $I_F = 1.0$ A             | $V_F$       | 0.55          | V           |
| Maximum Reverse Current at $V_{RRM}$                 | $I_R$       | 2.0           | mA          |
| Junction Temperature Range                           | $T_J$       | - 40 to + 125 | $^{\circ}C$ |
| Storage Temperature Range                            | $T_{STG}$   | - 40 to + 125 | $^{\circ}C$ |



## RATING AND CHARACTERISTIC CURVES ( ERA83-004 )

FIG.1 - FORWARD CURRENT DERATING CURVE

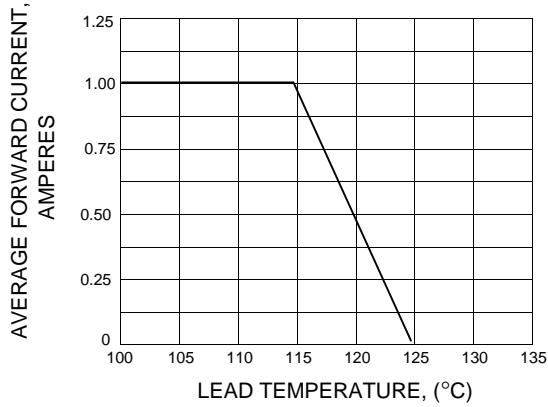


FIG.2 - MAXIMUM NON-REPETITIVE PEAK FORWARD SURGE CURRENT

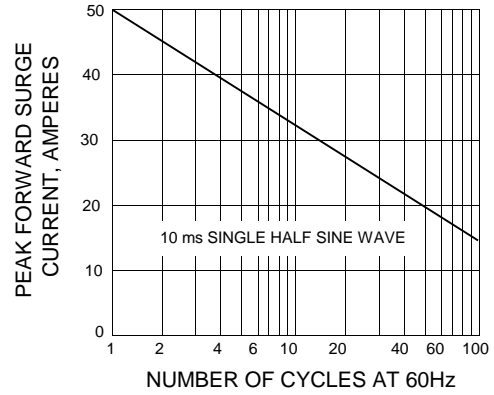


FIG.3 - TYPICAL FORWARD CHARACTERISTICS

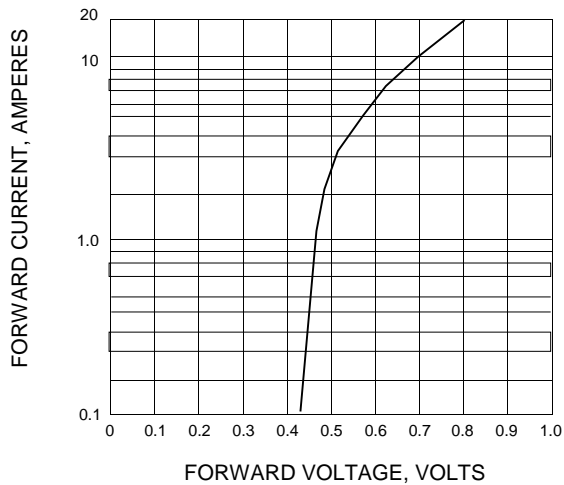


FIG.4 - TYPICAL REVERSE CHARACTERISTICS

