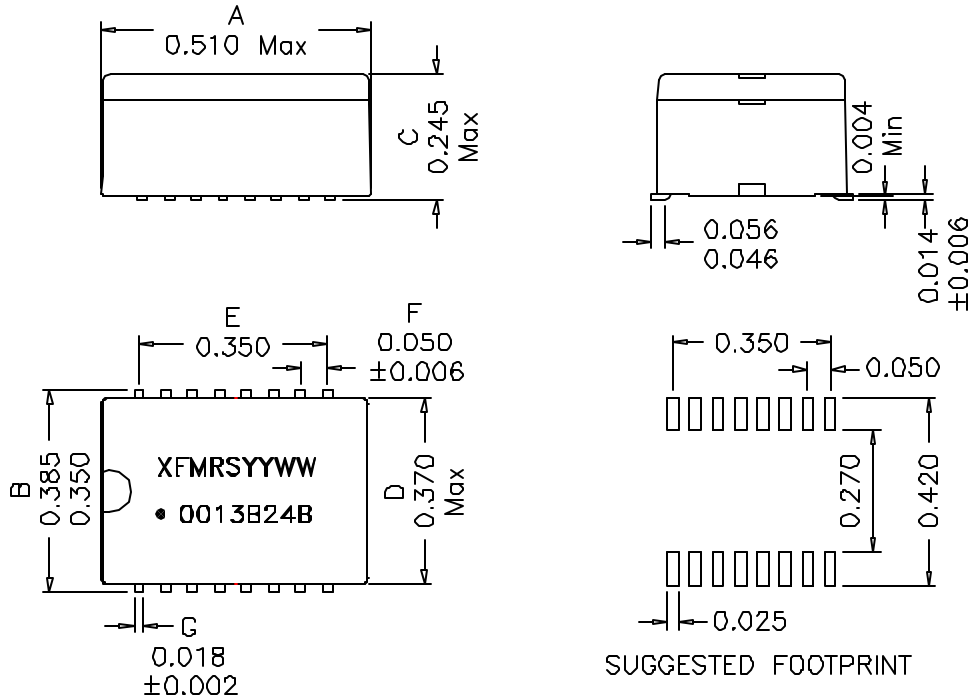
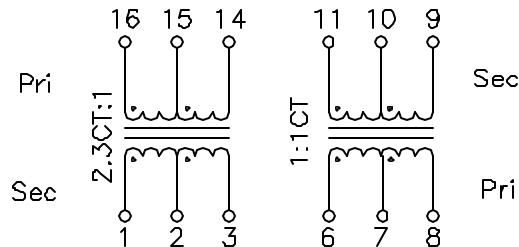


### 1. Mechanical Dimensions:



### 2. Schematic:



### 3. Electrical Specifications: @25°C

- Isolation Voltage: 1500 VAC
- Turns Ratio: (1-2-3):(16-15-14)=2.3CT:1CT ±5%  
(6-7-8):(11-10-9)=1CT:1CT ±5%
- PRI OCL: 1.2mH Min @100KHz 50mV
- Q: 5 Min @10KHz 50mV
- Cw/w: 35pF Max @100KHz 50mV (Pri/Sec)
- Pri Leakage L: 0.4uH Maximum @100KHz 50mV (short Sec)
- DC Res: Pins 1-3 1.8 Ohms Max  
Pins 6-8 0.70 Ohms Max  
Pins 9-11 0.70 Ohms Max  
Pins 14-16 0.70 Ohms Max
- Longitudinal Balance: Meets FCC Part 68
- Common Mode Rejection Ratio: >50dB @1MHz
- Return Loss: 50-100KHz 100KHz-2MHz 2-3MHz  
XMIT: 9dB 15dB 11dB  
RCV: 12dB 18dB 14dB
- Crosstalk Attenuation: 50dB Min, 100KHz to 10MHz
- Surge Voltage Capability:

Metallic Voltage, 800V peak, 10/560uS  
Longitudinal Voltage, 2400V peak, 10/700uS

#### Notes:

1. Solderability: Leads shall meet MIL-STD-202G, Method 208H for solderability.
2. Flammability: UL94V-0
3. ASTM oxygen index: > 28%
4. Insulation System: Class F 155°C, UL file E151558
5. Operating Temperature Range: All listed parameters are to be within tolerance from -40°C to +85°C
6. Storage Temperature Range: -55°C to +125°C
7. Aqueous wash compatible
8. SMD Lead Coplanarity: ±0.004\*(0.102mm)
9. Electrical and mechanical specifications 100% tested
10. RoHS Compliant Component
11. Recommended IR Reflow peak temp of 235C Max.
12. UL60950 recognized for Supplementary Insulation, E165866.

DOC. REV: C/2

**PROPRIETARY**

Document is the property of XFMRs Group & is not allowed to be duplicated without authorization.

<b>XFMRs INC</b> www.XFMRs.com		Title: SMD T1/E1 ISOLATION MODULE	
UNLESS OTHERWISE SPECIFIED TOLERANCES: .xxx ±0.010 Dimensions in Inch	P/N: XF0013B24B		REV. C
	DWN.	Mei Chen	Oct-11-11
SHEET 1 OF 1	CHK.	YK Liao	Oct-11-11
	APP.	Joe Huff	Oct-11-11