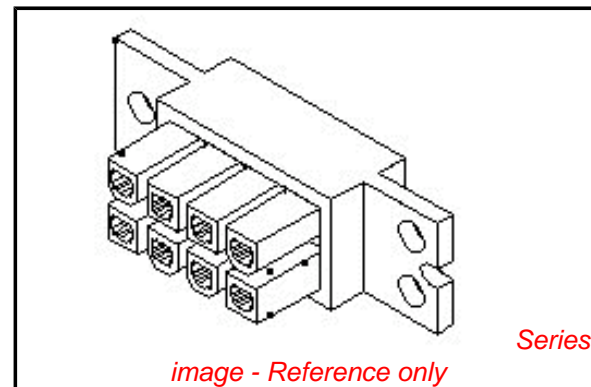


PLEASE CHECK WWW.MOLEX.COM FOR LATEST PART INFORMATION

Part Number: [0510100411](#)
Status: **Active**
Description: 5.00mm (.197") Pitch Wire-to-Wire Receptacle Housing, Floating-Fit Type, 4 Circuits

Documents:

3D Model	Product Specification PS-51010-004 (PDF)
Drawing (PDF)	Product Specification PS-51010-005 (PDF)
Product Specification PS-51010-001 (PDF)	Product Specification PS-51010-006 (PDF)
Product Specification PS-51010-002 (PDF)	Product Specification PS-51010-007 (PDF)
Product Specification PS-51010-003 (PDF)	RoHS Certificate of Compliance (PDF)



Agency Certification

CSA	LR19980
TUV	R72081037
UL	E29179

General

Product Family	Crimp Housings
Series	51010
Product Name	N/A

Physical

Circuits (maximum)	4
Color - Resin	Black
Flammability	94V-0
Gender	Female
Glow-Wire Compliant	No
Material - Resin	Polyester
Number of Rows	2
Packaging Type	Bag
Panel Mount	Yes
Pitch - Mating Interface (in)	0.197 In
Pitch - Mating Interface (mm)	5.00 mm
Stackable	No
Temperature Range - Operating	-40°C to +105°C

Material Info

Reference - Drawing Numbers

Product Specification	PS-51010-001, PS-51010-002, PS-51010-003, PS-51010-004, PS-51010-005, PS-51010-006, PS-51010-007, RPS-51010-013
Sales Drawing	SD-51010-001

EU RoHS

ELV and RoHS Compliant
REACH SVHC Contains SVHC: No
Halogen-Free Status

China RoHS



Need more information on product environmental compliance?

Email productcompliance@molex.com
 For a multiple part number RoHS Certificate of Compliance, [click here](#)

Please visit the [Contact Us](#) section for any non-product compliance questions.

Search Parts in this Series

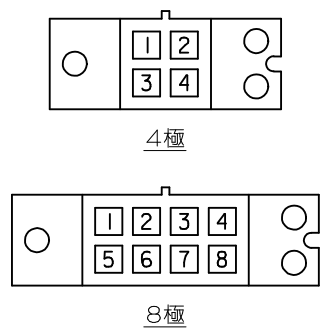
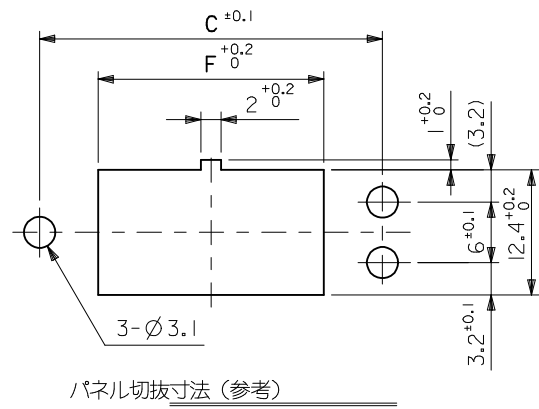
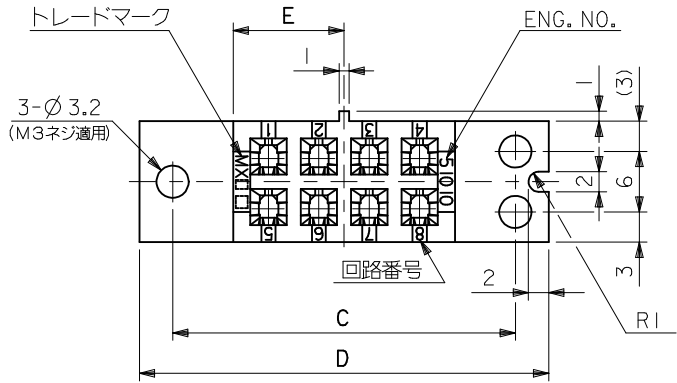
[51010Series](#)

Mates With

[52025](#)

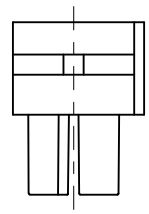
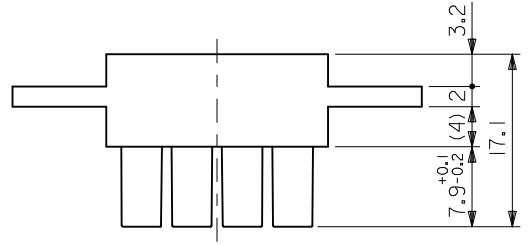
Use With

[5556](#)



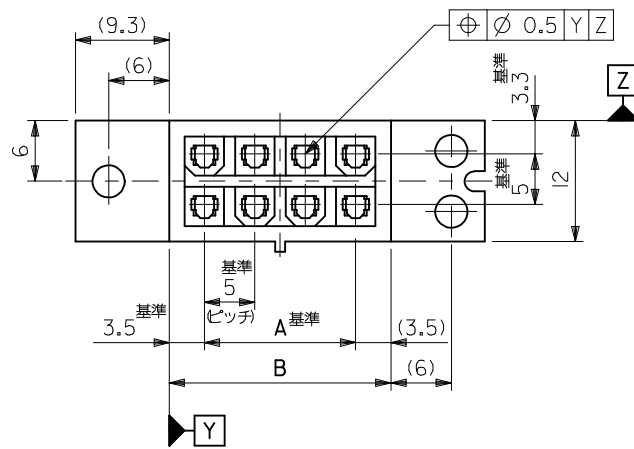
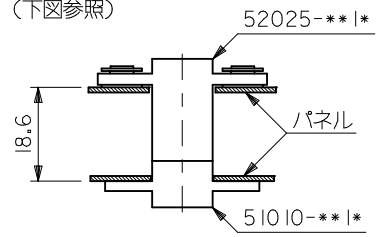
回路レイアウト図

パネル切抜寸法 (参考)



注記

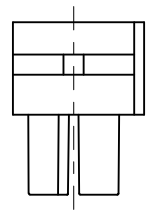
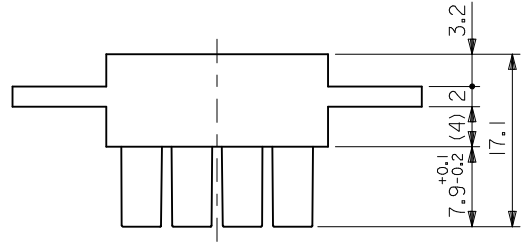
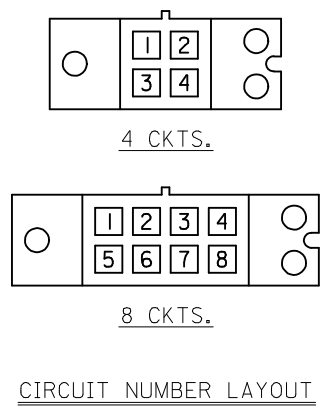
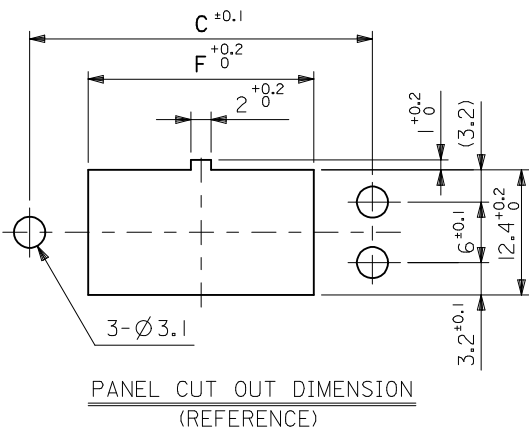
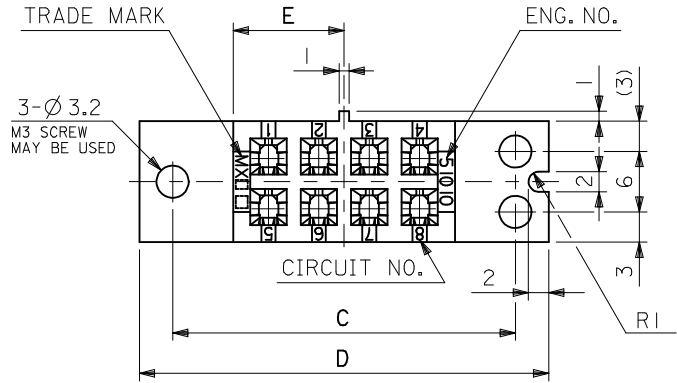
- 適用ターミナル: 5556 シリーズ
- 嵌合相手: 52025-***1*
- パネル外一外寸法 18.6 (下図参照)



22.4	11	40.6	34	22	15	51010-0811	黒	8
12.4	6	30.6	24	12	5	51010-0411	黒	4
F	E	D	C	B	A	ENG. NO.	色	極数

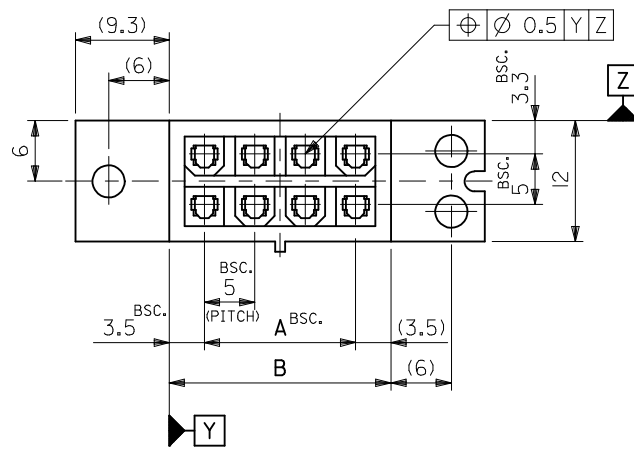
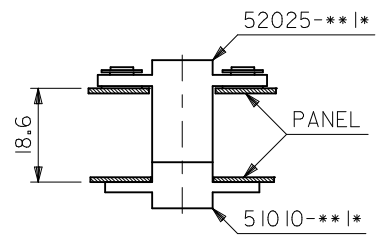
REVISED EC NO: J2009-1120 DRWN: YOSHIDAM 2008/12/17 CHKD: THARUYAMA 2008/12/17 APPR: NUKITA 2009/01/14	GENERAL TOLERANCES (UNLESS SPECIFIED)		DIMENSION STYLE MM ONLY	SCALE 2:1	DESIGN UNITS METRIC	THIRD ANGLE PROJECTION		
	10 UNDER	± 0.2	DRAWN BY H. HIRAMOTO	DATE '89/11/22	TITLE IMP REC. HOUSING			
	10 OVER 30 UNDER	± 0.25	CHECKED BY M. FUKUSHIMA	DATE '90/10/18	MATERIAL NO. SD-51010-001			
	30 OVER	± 0.3	APPROVED BY M. ENOMOTO	DATE '90/10/18	SHEET NO. 1 OF 2			
	ANGULAR	$\pm 3^\circ$	MOLEX INCORPORATED					
	DRAFT WHERE APPLICABLE MUST REMAIN WITHIN DIMENSIONS		SEE TABLE					
	THIS DRAWING CONTAINS INFORMATION THAT IS PROPRIETARY TO MOLEX INCORPORATED AND SHOULD NOT BE USED WITHOUT WRITTEN PERMISSION							

10 9 8 7 6 5 4 3 2 1



NOTES

- 1. APPLICABLE TERMINAL : 5556 SERIES
- 2. MATES WITH : 52025-***|*
- 3. BETWEEN PANEL-PANEL DIMENSION : 18.6 (SEE BELOW FIGURE)



22.4	11	40.6	34	22	15	51010-0811	BLACK	8
12.4	6	30.6	24	12	5	51010-0411	BLACK	4
F	E	D	C	B	A	ENG. NO.	COLOR	NO. OF CKTS.

REVISED EC NO: J2009-1120 DRWN: YOSHIDAM 2008/12/17 CHKD: THARUYAMA 2008/12/17 APPR: NUKITA 2009/01/14	GENERAL TOLERANCES (UNLESS SPECIFIED)		DIMENSION STYLE MM ONLY		SCALE 2:1		DESIGN UNITS METRIC		THIRD ANGLE PROJECTION	
	10 UNDER	±0.2	DRAWN BY H. HIRAMOTO		DATE '89/11/22		TITLE IMP REC. HOUSING			
	10 OVER 30 UNDER	±0.25	CHECKED BY M. FUKUSHIMA		DATE '90/10/18		MOLEX INCORPORATED SD-51010-001			
	30 OVER	±0.3	APPROVED BY M. ENOMOTO		DATE '90/10/18					
ANGULAR ±3 °		DRAFT WHERE APPLICABLE MUST REMAIN WITHIN DIMENSIONS		MATERIAL NO. SEE TABLE		DOCUMENT NO. SD-51010-001		INCORPORATED AND SHOULD NOT BE USED WITHOUT WRITTEN PERMISSION		