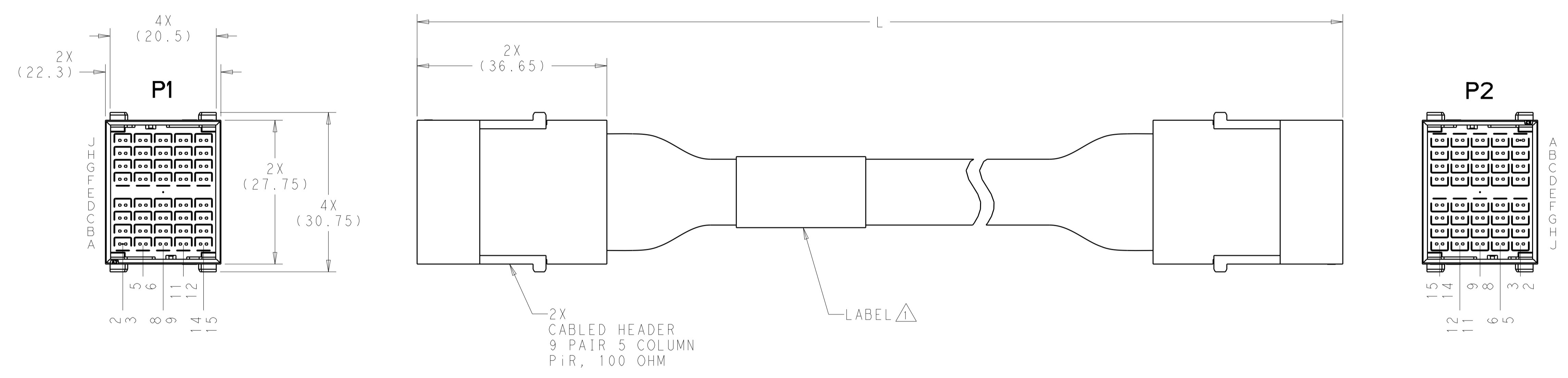
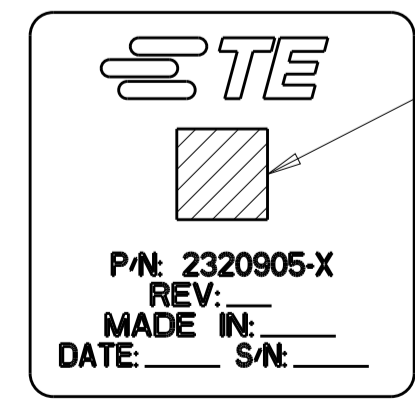


REVISIONS				
P.	LTN	DESCRIPTION	DATE	APVD
1		PROPOSED	09JUN2017	REH KS



△ LABEL INFORMATION:



BARCODE INFO:
 2320905-dxxwyysss
 d=DASH NUMBER
 xx=MANUFACTURING SITE
 US=UNITED STATES, CN=CHINA, MX=MEXICO
 ww=WEEK
 yy=YEAR
 sss=SERIAL NUMBER 000 THRU 999

1508	6-2320905-6
1008	5-2320905-6
508	3-2320905-6
L±3	PART NUMBER

- EACH CABLE ASSEMBLY TESTED FOR CONTINUITY, OPENS AND SHORTS.
- SEE SHEET 2 FOR WIRING DIAGRAM.
- EACH HIGH SPEED CABLET TESTED ON NETWORK ANALYZER, SERIALIZED, AND DATA SAVED.

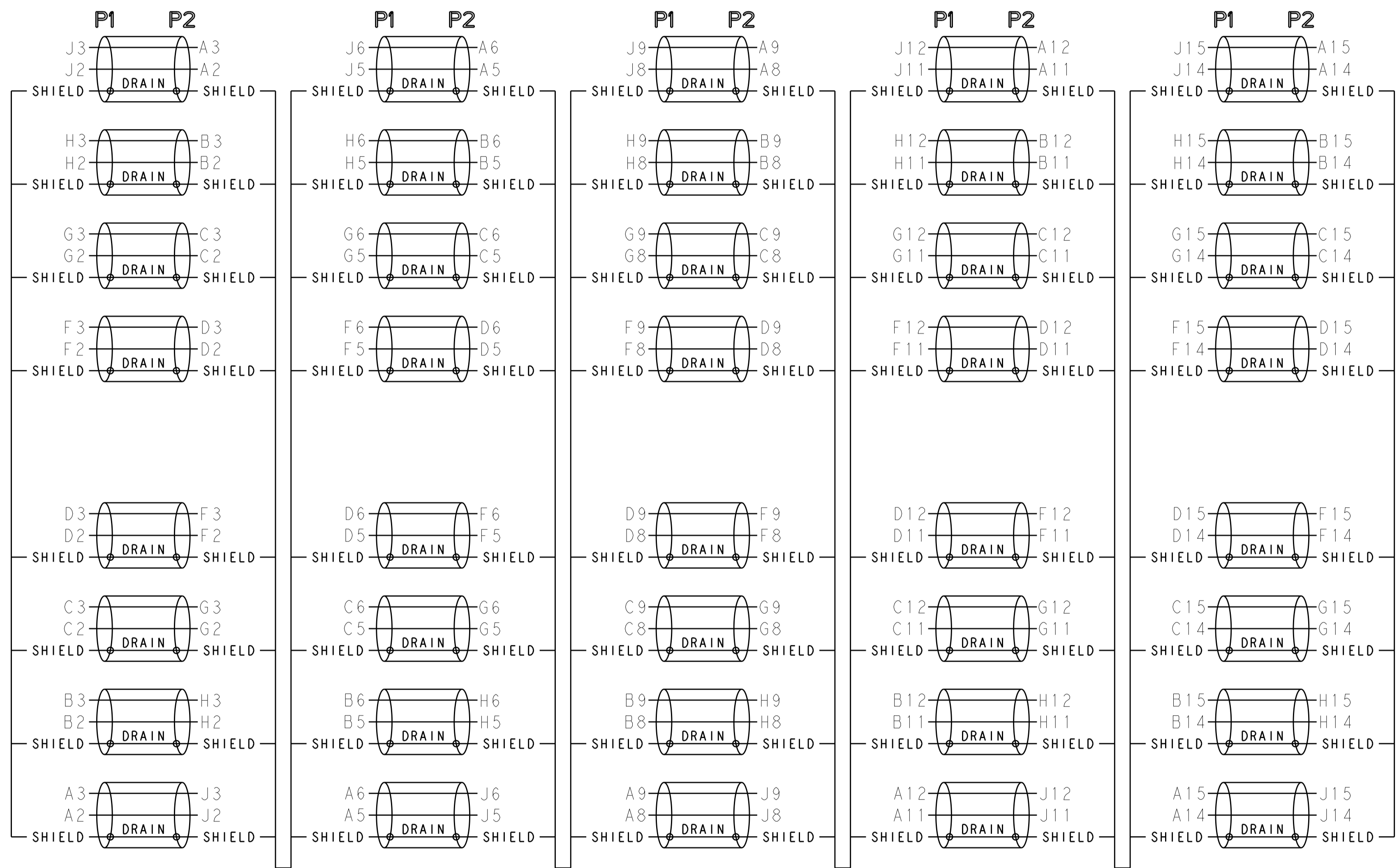
THIS PRODUCT HAS NOT COMPLETED VALIDATION AND QUALIFICATION TESTING

PRELIMINARY NOT RELEASED FOR PRODUCTION

DIMENSIONS:		TOLERANCES UNLESS OTHERWISE SPECIFIED:		APVD		NAME	
mm	0 PLC ±	1 PLC ±	2 PLC ±	3 PLC ±	4 PLC ±	APVD	NAME
	ANGLES ±					APVD	NAME
MATERIAL	FINISH	WEIGHT	SCALE	SIZE	CAGE CODE	DRAWING NO	RESTRICTED TO
-	-	-	2:1	A1	-	©=2320905	-
Customer Drawing				SCALE	SHEET	OF	REV
				2:1	1	2	1

REVISIONS				
P.	LTN.	DESCRIPTION	DATE	APVD.
-	-	SEE SHEET 1	-	-

WIRING DIAGRAM



THIS PRODUCT HAS NOT COMPLETED VALIDATION AND QUALIFICATION TESTING

PRELIMINARY NOT RELEASED FOR PRODUCTION

THIS DRAWING IS A CONTROLLED DOCUMENT.		OWN: HAMNER 09JUN2017	TE Connectivity
DIMENSIONS: mm		CHK: K. SAMMON 16JUN2017	
TOLERANCES UNLESS OTHERWISE SPECIFIED: 0 PLC ± 1 PLC ± 2 PLC ± 3 PLC ± 4 PLC ± ANGLES ±		APVD: K. SAMMON 16JUN2017	NAME: CABLE ASSEMBLY, 100 OHM, PiR, 9 PAIR, 5 COLUMN, 20G, 2-2 WIRING, A-J
MATERIAL: -		FINISH: -	RESTRICTED TO: -
WEIGHT: -		SCALE: 2:1	SHEET 2 OF 2
Customer Drawing		SIZE: A1	REV 1