

8 7 6 5 4 3 2 1  
 THIS DRAWING IS UNPUBLISHED. RELEASED FOR PUBLICATION.  
 © COPYRIGHT 20 BY TYCO ELECTRONICS CORPORATION. ALL RIGHTS RESERVED.

SET UP GAUGE 2119599-2	LOC A	DIST 66	REVISIONS			
REV		LTN	DESCRIPTION	DATE	OWN	APPV
1			ORIGINAL	16DEC2010	GH	TE
A			RELEASED	16MAY2012	GH	TE
B			ECR-13-012585	07AUG2013	BH	GB

ATLANTIC VERSION TERMINATOR INTERFACE ADAPTER	PART NUMBER	REVISION	DESCRIPTION	FEED TYPE	APPLICATOR STYLE CONVERSION CHART							
					CONVERT TO	PART NUMBERS REQUIRED						
						PNEUMATIC FEED	2119950-1	2119792-2	-	2119641-1	-	2063440-1
	2150234-1	B	FINE CRIMP HEIGHT ADJUST	MECHANICAL	SERVO LATCH PLATE	2119951-1	1901697-1	8-2150234-5	-	-	-	2168400-7 (QUANTITY 2)
					SMART APPLICATOR	2161326-1	-	8-2150234-4	-	-	-	
					MECHANICAL FEED	2119949-1	2063961-1	5-18022-5	2119653-1	-	-	-
2150234-2	B	FINE CRIMP HEIGHT ADJUST	PNEUMATIC	SERVO LATCH PLATE	2119951-1	1901697-1	8-2150234-5	-	-	-	2168400-7 (QUANTITY 2)	
				SMART APPLICATOR	2161326-1	-	8-2150234-4	-	-	-		
				MECHANICAL FEED	2119949-1	2063961-1	5-18022-5	2119653-1	-	-	-	
2150234-5	B	FINE CRIMP HEIGHT ADJUST	SERVO LATCH PLATE	PNEUMATIC FEED	2119950-1	2119792-2	-	-	-	2063440-1		
				-	-	-	-	-	-			
2150234-6	B	NON-CRIMP HEIGHT ADJUST	SERVO LATCH PLATE	-	-	-	-	-	-	-		
				-	-	-	-	-	-			
2150234-7	B	FINE CRIMP HEIGHT ADJUST	NONE	-	-	-	-	-	-			
7-2150234-7	A	CRIMP TOOLING KIT	-	-	-	-	-	-	-			

APPLICATOR DATA		
CRIMP	SIZE	TYPE
WIRE	2.80 mm [.110]	F
INSUL	4.57 mm [.180]	F

APPLICATOR INSTRUCTIONS 408-10390

TERMINAL DATA: TE TERMINAL TE CRIMP SPECIFICATION

TERMINAL NAME: .250 SERIES FASTON RECEPTACLE

WIRE STRIP LENGTH	INSULATION DIAMETER RANGE
6.00-6.80 mm [.236-.268 IN]	∅3.05-4.30 mm [.120-.169 IN]

TERMINAL APPLICATION SPECIFICATION 114-20023

TERMINALS APPLIED 3

TE TERMINAL	TE TERMINAL	TE TERMINAL	TE TERMINAL
280001-9	160808-1	160256-5	3-160256-1
1-280001-0	160808-2	2-160256-1	4-160256-2
1-280001-1	100605-7	2-160256-2	4-160256-5
1-280001-2	1-100605-2	2-160256-8	4-160256-7

WIRE SIZE	CRIMP HEIGHT mm [INCH]	CRIMP HEIGHT REFERENCE SETTING
2.50mm <sup>2</sup> or 14 AWG	1.98 +/- 0.03 [.078 +/- .001]	5.5
2.00mm <sup>2</sup>	1.85 +/- 0.03 [.073 +/- .001]	6.8
1.50mm <sup>2</sup> or 16 AWG	1.73 +/- 0.03 [.068 +/- .001]	8.0
1.00mm <sup>2</sup> or 18 AWG	1.63 +/- 0.03 [.064 +/- .001]	8.8
0.75mm <sup>2</sup>	1.52 +/- 0.03 [.060 +/- .001]	10.0

1. RECOMMENDED SPARE PARTS

2. GREASE BEARING SURFACES LIGHTLY

3. LUBRICATE DAILY PER THE APPLICATOR INSTRUCTION SHEET SUPPLIED WITH THE APPLICATOR.

4. APPLICATOR SPECIFIC DATA TO BE ENTERED INTO BLANK MEMORY CHIP AT ASSEMBLY. SEE BELOW FOR PART NUMBER:

- MECHANICAL FEED WITH "SMART APPLICATOR" CONVERSION: 8-2150234-4
- PNEUMATIC FEED WITH "SMART APPLICATOR" CONVERSION: 8-2150234-4
- SERVO FEED WITH "FINE CRIMP HEIGHT ADJUST": 8-2150234-5
- SERVO FEED WITH "NON-CRIMP HEIGHT ADJUST": 8-2150234-6

5. ADJUSTMENT OF THE STRIPPER MAY BE REQUIRED WHEN MOVING THE APPLICATOR BETWEEN BENCH AND LEADMAKER APPLICATIONS.

6. APPLY PART NUMBER 1-23419-5 LOCTITE TO THREADS OF ITEM 50, 62 & 242. FOR -6 ONLY APPLY PART NUMBER 1-23419-5 LOCTITE TO THREADS OF ITEMS 37, 50 & 242.

7. GREASE THREADS, GROOVE AND O-RING ON ITEMS 35 & 252.

8. MAGNET, ITEM 166 MUST BE ORIENTED CORRECTLY IN ORDER TO PROPERLY ACTUATE THE COUNTER.

9. CRIMP HEIGHT REFERENCE SETTING WAS THE SETTING USED WHEN THE APPLICATOR WAS QUALIFIED AT THE FACTORY. ADJUSTMENT MAY BE NECESSARY WHEN RUNNING APPLICATOR IN THE FIELD.

10. SPARE FEED CAM STORAGE LOCATION REFER TO INSTRUCTION SHEET FOR ADDITIONAL INFORMATION.

11. THE RECOMMENDED SET-UP FOR END FEED APPLICATORS IS POST-FEED WITH ITEM 2119653-1. THE APPLICATOR CAN BE CONFIGURED FOR PRE-FEED WITH ITEM 2119652-1 BUT MAY ENCOUNTER PROBLEMS WITH SOME APPLICATIONS. FEED ISSUES OR TERMINAL JAMMING MAY OCCUR IN THE PRE-FEED CONFIGURATION.

12. WHEN ASSEMBLING -6 NON-CRIMP HEIGHT ADJUST APPLICATOR USE SHIM PACK 2119957-2 TO ALIGN APPLICATOR'S MAXIMUM WIRE CRIMP HEIGHT AT NORMAL TERMINATOR SHUT HEIGHT

13. TERMINAL LUBRICANT IS RECOMMENDED.

\*WARNING  
 ON INSTALLATION, SET WIRE DISC, ITEM 40 TO LARGEST WIRE SIZE SETTING. USE OF SETTINGS BELOW MINIMUM REQUIRED CRIMP HEIGHT SETTING WILL CAUSE DAMAGE TO CRIMP TOOLING.

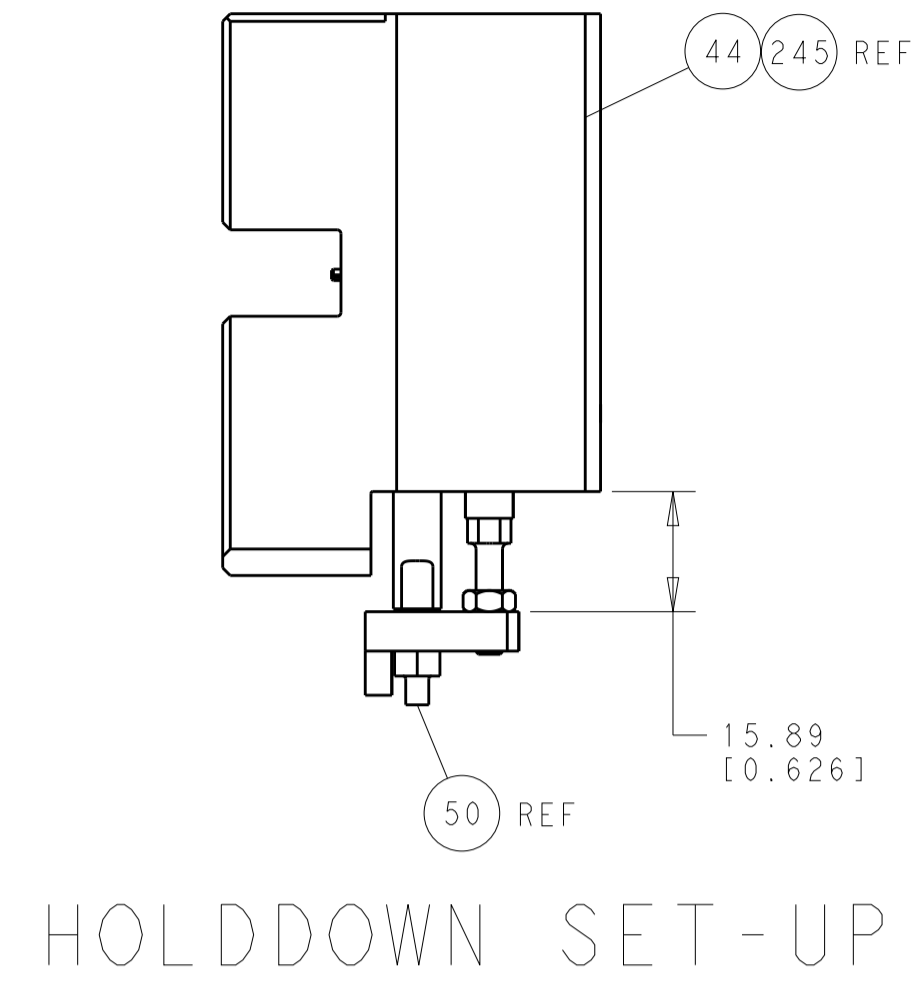
-	-	1	-	-	-	2119957-2	APPLICATOR SHIM PACK	260
-	1	-	1	1	1	8-21084-0	O-RING, .676 ID, .070 DIA. MAT.	252
-	-	-	-	1	-	2119640-1	PUSH ROD, AIR FEED	250
-	-	-	-	1	-	2079988-1	BUSHING, LCH5-12, MISUMI	249
-	-	-	-	1	-	2119641-1	FEED CAM, AIR FEED	248
-	1	-	1	1	1	2119798-1	DETENT PIN	247
-	1	-	1	1	1	1-22279-3	SPRING, COMPRESSION	246
-	-	1	-	-	-	2119759-1	RAM, AMP STYLE, END FEED, NON-ADJUST	245
-	1	1	1	1	1	2119082-9	CAM, SNAIL, INSULATION ADJUSTMENT	244
-77	-7	-6	-5	-2	-1	PART NO	DESCRIPTION	ITEM NO

ATLANTIC VERSION  
 Shown on sheets 1 of 4 & 2 of 4  
 (Pacific version shown on sheets 3 of 4 & 4 of 4)

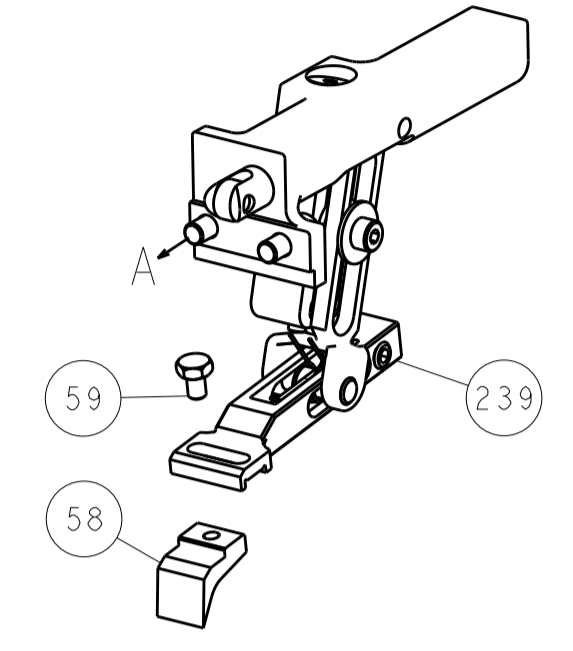
-	1	1	1	1	1	2079764-1	WASHER, WAVE SPRING, CREST-TO-CREST	243
-	1	1	1	1	1	2119083-1	RETAINER, INSULATION DIAL	242
-	-	2	2	-	-	2168400-7	SHCS, LOW HEAD, RoHS, M5 X 10	240
-	-	-	-	-	1	2119580-1	MECHANICAL FEED ASSEMBLY	239
-	-	-	-	1	-	2063440-1	AIR FEED MODULE	238
-	-	1	1	-	-	2119740-2	TAG, IDENTIFICATION	213
-	-	REFREF	-	-	-	1901697-1	FEED FINGER ASSEMBLY, EF	183
-	1	1	1	1	1	6-993111-6	PIN, SLOTTED SPRING 3.0 X 14.0	177
-	1	1	1	1	1	8-22280-7	SPRING, COMPRESSION	176
-	1	1	1	1	1	1752353-2	GUIDE PIN, HOLDDOWN	175
-	1	1	1	1	1	1901680-2	GUIDE PIN, HOLDDOWN	174
-	-	-	-	2	-	21045-3	RING, RETAIN, EXTERN, 3/16 CRESCENT	172
-	1	1	1	1	1	994969-1	MAGNET, RARE EARTH HIGH ENERGY	166
-	REFREF	REFREF	REFREF	REFREF	REFREF	994970-2	COUNTER, MAGNETIC	164
-	-	-	-	1	-	240638-1	SPRING, FEED FINGER	163
-	-	-	-	1	-	3-23627-7	PIN, RETAIN, GRVD, 3/16 X .854	137
-	-	REFREF	-	-	-	SEE NOTE 4	MEMORY CHIP, PROGRAMMED	135
-	-	1	1	-	-	1633743-1	SERVO FEED LATCH ASM	133
-	1	1	1	1	1	455888-6	SPACER, CRIMPER	82
-	1	1	1	1	1	2119791-9	DEPRESSOR, WIRE	73
-	1	1	1	1	1	2119956-2	DOCUMENTATION PACKAGE	71
-	2	2	2	2	2	2-18032-2	SCR, SET, FLT POINT M3 X 10.0	70
-	1	1	1	1	1	2119943-1	WASHER, SPACER	69
-	1	-	-	1	1	2119740-1	TAG, IDENTIFICATION	67
-	2	2	2	2	2	2168078-1	SCREW, DRIVE, RH, RoHS, 2 x .188	66
-	1	1	1	1	1	1901681-5	HOLDDOWN, TERMINAL	65
-	2	2	2	2	2	2168400-5	SHCS, LOW HEAD, RoHS, M4 X 20	64
-	1	-	1	1	1	2119793-1	LIMITER, ADJUSTMENT BOLT	63
-	3	-	3	3	3	992763-5	SCR, SET, SOC, CONE POINT, M3 X 4.0	62
-	1	1	1	1	1	2079383-4	SCR, BHSC, RoHS (M4 X 8)	60
-	-	-	-	-	1	5-18022-5	SCR, HEX HD CAP, M4 X 6.0	59
-	-	-	-	-	1	2063961-1	FEED FINGER	58
-	3	3	3	3	3	2168400-4	SHCS, LOW HEAD, RoHS, M4 X 8	57
-	2	2	2	2	2	1-2168083-0	SCR, SKT HD CAP, RoHS, M4 X 10	56
-	2	2	2	2	2	5018030-2	NUT, HEX, REG, RoHS, M4	55
-	2	2	2	2	2	5018030-1	NUT, HEX, REG, RoHS, M3	54
-	2	2	2	2	2	986965-8	NUT, LOCK, HEX, TORQUE (M4)	53
-	1	1	1	1	1	1-5018030-0	NUT, HEX, REG, RoHS, M3.5	52
-	-	-	-	-	1	2119792-2	PAWL, EF, AIR	51
-	1	1	1	1	1	1-1976055-3	STANDOFF, HOLD-DOWN	50
-	-	-	-	-	2	18023-9	SCR, SKT HD CAP M4 X 6.0	49
-	-	-	-	-	1	2119652-1	FEED CAM, PRE FEED	48
-	-	-	-	-	1	2119653-1	FEED CAM, POST FEED	47
-	1	1	1	1	1	2119655-5	APPLICATOR BASIC ASSEMBLY, EF	46
-	1	-	1	1	1	2119369-1	RAM, AMP STYLE, END FEED	44
-	1	1	1	1	1	2079383-7	SCR, BHSC, RoHS (M8 X 25)	41
-	1	-	1	1	1	2119645-1	DISC, NUMBERED FA WIRE ADJUSTMENT	40
-	1	-	1	1	1	2119957-1	APPLICATOR SHIM PACK	39
-	1	1	1	1	1	1-2119644-2	RAM WASHER, PRECISION	38
-	1	1	1	1	1	2119085-1	FA HEAD, ATLANTIC STYLE	37
-	1	-	1	1	1	2119092-1	BOLT, ADJUSTMENT	35
-	7	7	7	7	7	1-18028-2	WASHER, FLAT, REG M4	33
-	2	2	2	2	2	2168083-9	SCR, SKT HD CAP, RoHS, M4 X 20	31
-	2	2	2	2	2	1-2168083-0	SCR, SKT HD CAP, RoHS, M4 X 10	29
-	1	1	1	1	1	240639-1	STRIPPER (MACHINING)	27
-	2	2	2	2	2	1320906-1	STUD, THREADED	25
-	1	1	1	1	1	1752371-5	PLATE, STRIP GUIDE	24
-	1	1	1	1	1	240825-3	PLATE, STRIP HOLD DOWN	23
-	2	2	2	2	2	2-22281-3	SPRING, COMPRESSION	22
-	1	1	1	1	1	1752373-4	DRAG	20
-	2	2	2	2	2	1901259-5	GUIDE, LOWER STRIP	18
-	4	4	4	4	4	1-2079383-1	SCR, BHSC, RoHS (M6 X 12)	17
-	1	1	1	1	1	1752360-1	SPACER, HOLD-DOWN	13
-	1	1	1	1	1	240644-9	PLATE, REAR SHEAR	11
-	-	-	-	-	-	-	-	10
-	1	1	1	1	1	2-690495-6	PLATE, FRONT SHEAR	9
1	1	1	1	1	1	1338673-5	ANVIL, COMBINATION	8
-	1	1	1	1	1	1-2217206-3	BLADE, SLUG	7
-	1	1	1	1	1	240641-3	SPACER	5
-	1	1	1	1	1	238009-1	BLOCK, FL CRIMPER SPACER	4
1	1	1	1	1	1	2119582-3	CRIMPER, INSULATION F PREMIUM	3
-	2	2	2	2	2	455888-1	SPACER, CRIMPER	2
1	1	1	1	1	1	1490189-6	CRIMPER, WIRE	1
-77	-7	-6	-5	-2	-1	PART NO	DESCRIPTION	ITEM NO

THIS IS A REVISION TO THE ORIGINAL DRAWING. ANY CHANGES TO THE ORIGINAL DRAWING MUST BE INDICATED BY A REVISION NUMBER.				OWN HOFFNER	16DEC2011
				CHK T. ELBIN	19DEC2011
				APPV T. ELBIN	19DEC2011
DIMENSIONS:		TOLERANCES UNLESS OTHERWISE SPECIFIED:			
mm		0 PLC	±	0.5	
		1 PLC	±	0.5	
		3 PLC	±	0.13	
		5 PLC	±	0.013	
		4 PLC	±	0.001	
		ANGLES	±	0.001	
		FINISH	±	0.001	
MATERIAL:		WEIGHT:			
:		:			
Customer Accessible Production Drawing				SCALE: 1:1	SHEET: 1 of 4

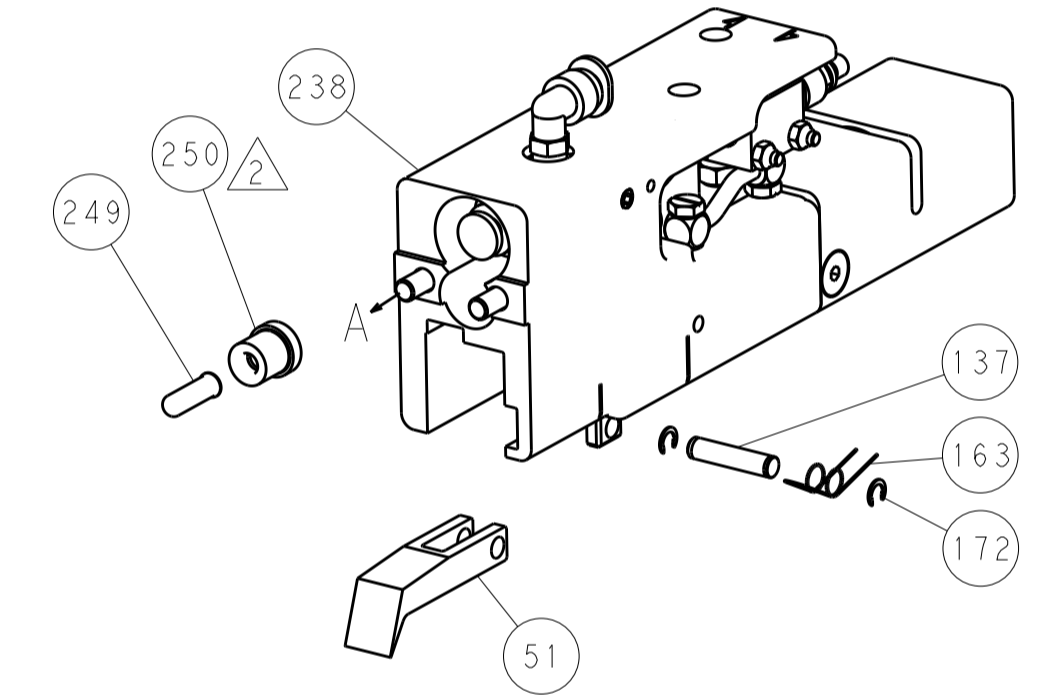
LOC		DIST		REVISIONS			
A	66	P	LTN	DESCRIPTION	DATE	OWN	APVD
		-		SEE SHEET 1			



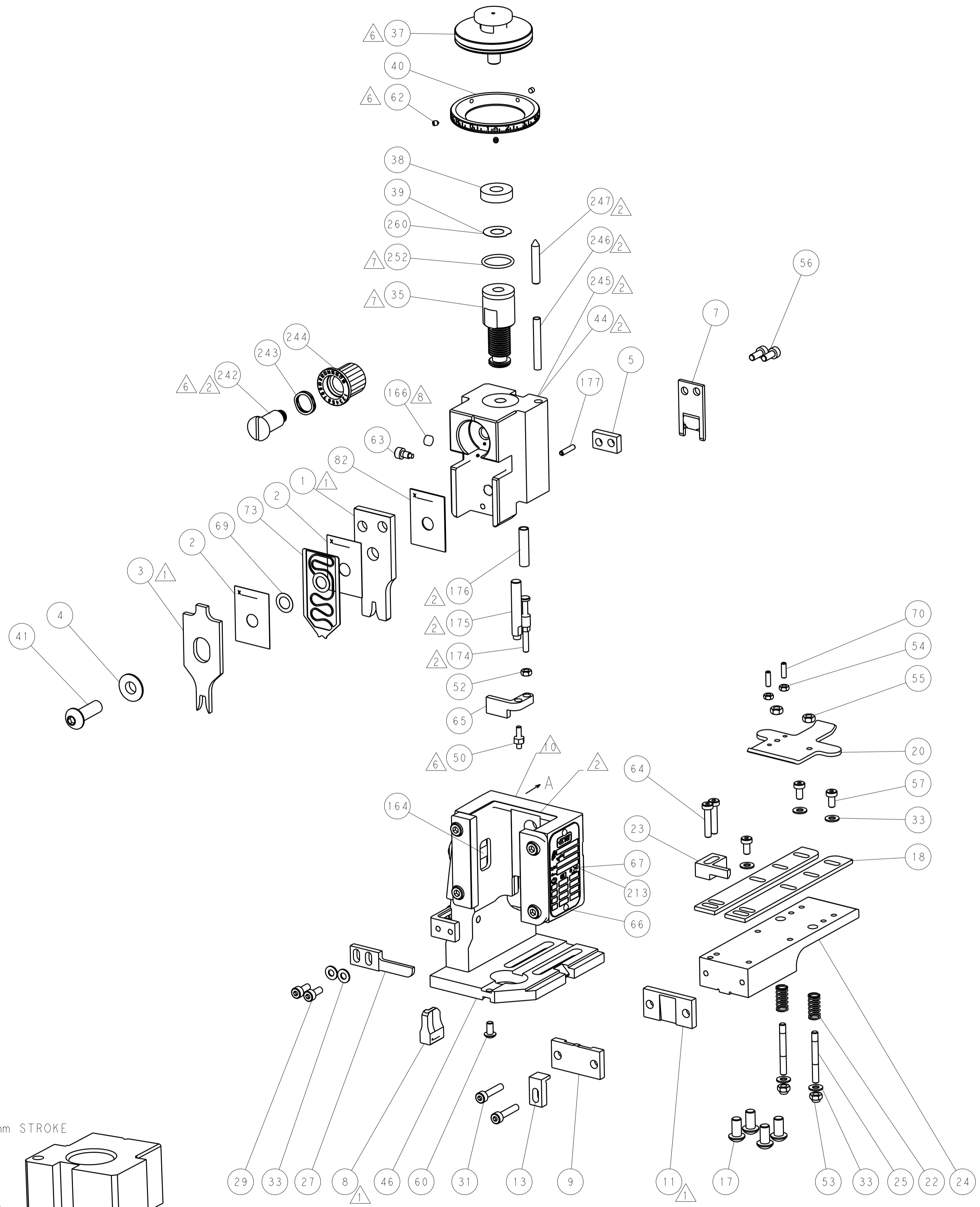
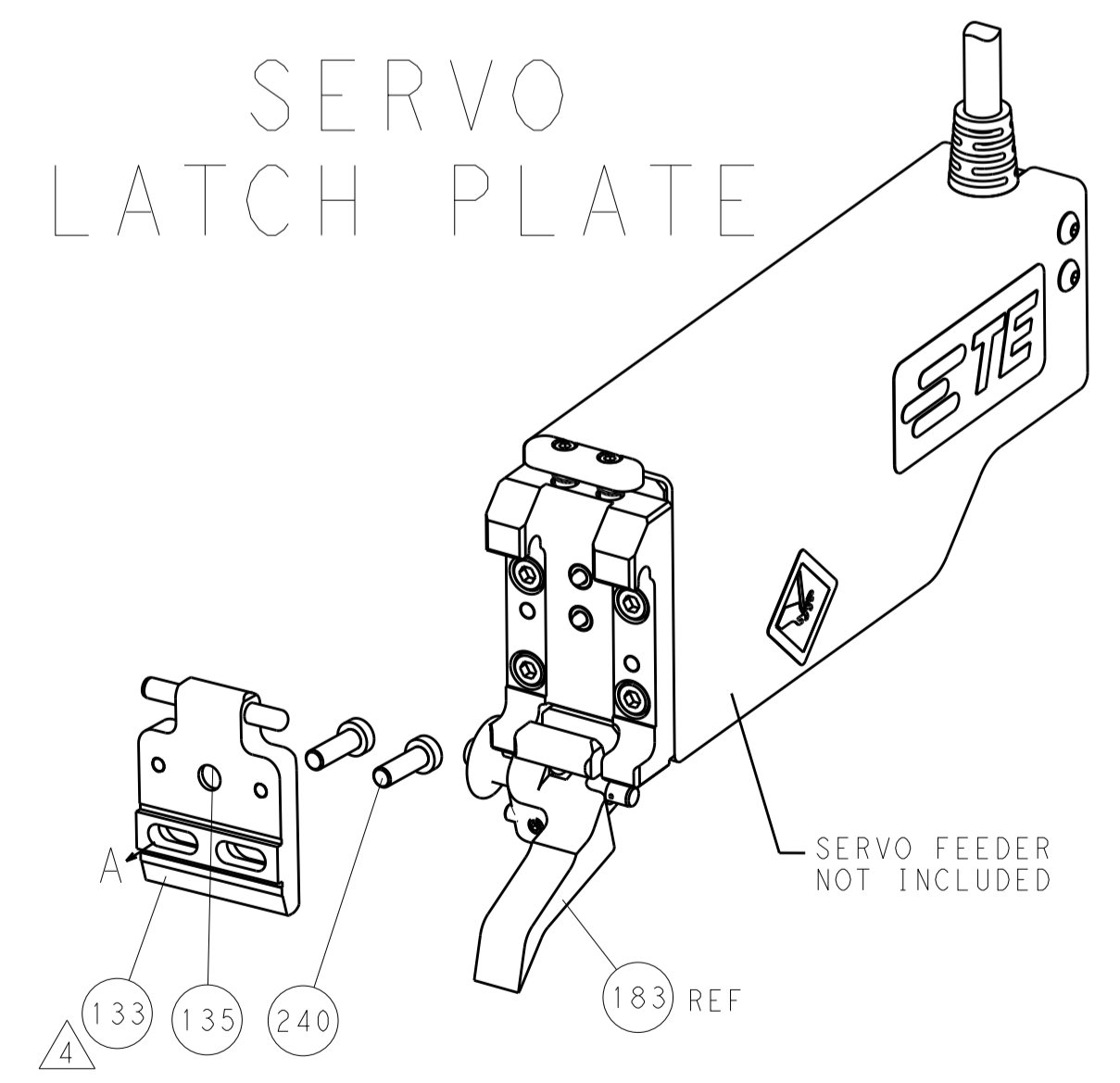
FEED TYPE  
MECHANICAL



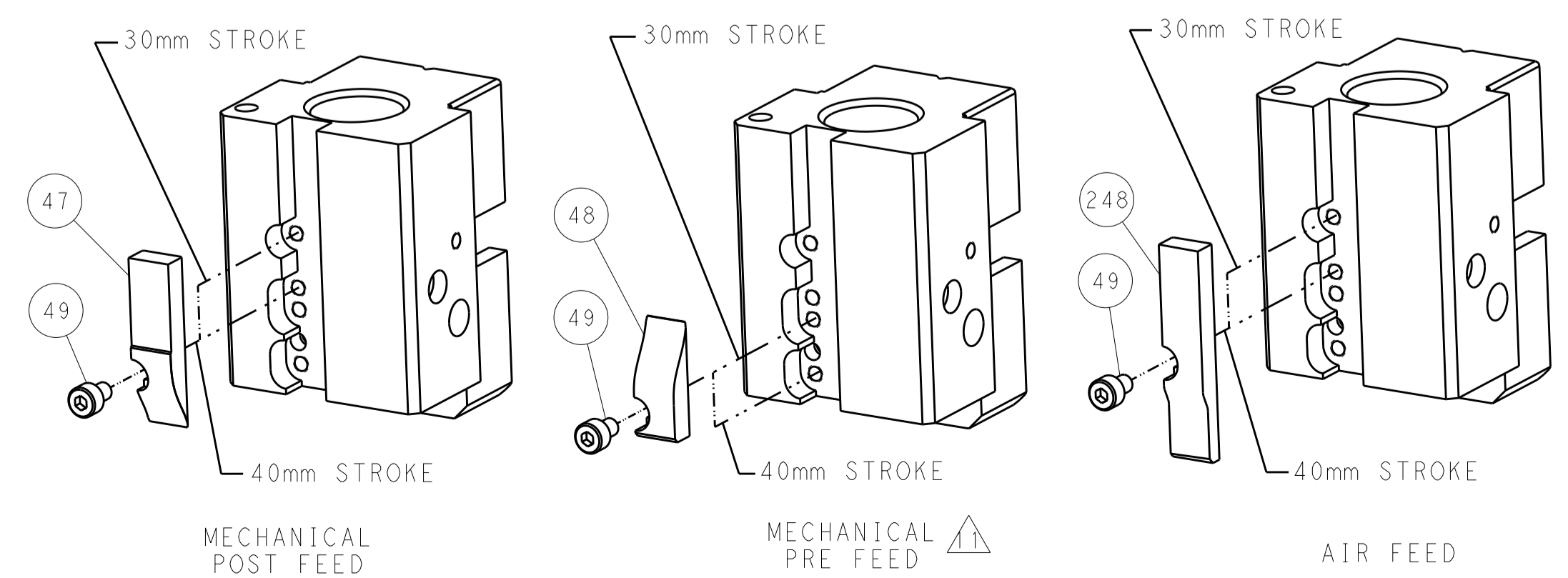
PNEUMATIC



SERVO  
LATCH PLATE

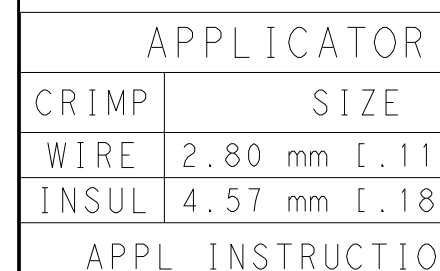



CAM POSITIONS




ATLANTIC VERSION  
 Shown on sheets 1 of 4 & 2 of 4  
 (Pacific version shown on sheets 3 of 4 & 4 of 4)






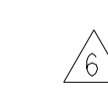



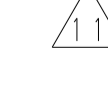
DIMENSIONS:		TOLERANCES UNLESS OTHERWISE SPECIFIED:		OWN: HOFFNER 16DEC2011		TE Connectivity	
mm		0 PLC ±0.5		CHK: T. ELBIN 19DEC2011		Harrisburg, PA 17105-3608	
Ø		1 PLC ±0.13		APVD: T. ELBIN 19DEC2011		NAME: Ocean End Feed Applicator	
H		3 PLC ±0.013		PRODUCT SPEC		SIZE: CAGE CODE DRAWING NO	
ANGLES		4 PLC ±0.0001		APPLICATION SPEC		RESTRICTED TO	
FINISH		5 PLC ±0.0001		WEIGHT		A1 00779 ©=2150234	
MATERIAL		6 PLC ±0.0001		Customer Accessible Production Drawing		SCALE: 1:1 SHEET 2 OF 4 REV B	

PART NUMBER	REVISION	DESCRIPTION	FEED TYPE	APPLICATOR STYLE CONVERSION CHART							
				CONVERT TO	PART NUMBERS REQUIRED						
	2-2150234-1	B	FINE CRIMP HEIGHT ADJUST	MECHANICAL	PNEUMATIC FEED	2119950-1	2119792-2	-	2119641-2	-	2063440-1
					SERVO LATCH PLATE	2119951-1	1901697-1	8-2150234-5	-	-	2168400-7 (QUANTITY 2)
					SMART APPLICATOR	2161326-1	-	8-2150234-4	-	-	-
					MECHANICAL FEED	2119949-1	2063961-1	5-18022-5	2119653-2	-	-
	2-2150234-2	B	FINE CRIMP HEIGHT ADJUST	PNEUMATIC	SERVO LATCH PLATE	2119951-1	1901697-1	8-2150234-5	-	-	2168400-7 (QUANTITY 2)
					SMART APPLICATOR	2161326-1	-	8-2150234-4	-	-	-
					MECHANICAL FEED	2119949-1	2063961-1	5-18022-5	2119653-2	-	-
	2-2150234-5	B	FINE CRIMP HEIGHT ADJUST	SERVO LATCH PLATE <sup>4</sup>	PNEUMATIC FEED	2119950-1	2119792-2	-	2119641-2	-	2063440-1
	2-2150234-7	B	FINE CRIMP HEIGHT ADJUST	NONE	-	-	-	-	-	-	-
	7-2150234-7	A	CRIMP TOOLING KIT	-	-	-	-	-	-	-	-

CRIMP	SIZE	TYPE
WIRE	2.80 mm [.110]	F
INSUL	4.57 mm [.180]	F
APPL INSTRUCTIONS 408-10390 		

TERMINAL DATA: TE TERMINAL		TE CRIMP SPECIFICATION	
TERMINAL NAME: .250 SERIES FASTON RECEPTACLE			
WIRE STRIP LENGTH		INSULATION DIAMETER RANGE	
6.00-6.80 mm [.236-.268 IN]		Ø3.05-4.30 mm [1.120-.169 IN]	
TERMINAL APPLICATION SPECIFICATION		114-20023	
TERMINALS APPLIED 			
TE TERMINAL	TE TERMINAL	TE TERMINAL	TE TERMINAL
280001-9	160808-1	160256-5	3-160256-1
1-280001-0	160808-2	2-160256-1	4-160256-2
1-280001-1	100605-7	2-160256-2	4-160256-5
1-280001-2	1-100605-2	2-160256-8	4-160256-7

WIRE SIZE	CRIMP HEIGHT mm [INCH]	CRIMP HEIGHT REFERENCE SETTING <sup>9</sup>
2.50mm <sup>2</sup> or 14 AWG	1.98+/-0.03 [.078+/-0.001]	5.5
2.00mm <sup>2</sup>	1.85+/-0.03 [.073+/-0.001]	6.8
1.50mm <sup>2</sup> or 16 AWG	1.73+/-0.03 [.068+/-0.001]	8.0
1.00mm <sup>2</sup> or 18 AWG	1.63+/-0.03 [.064+/-0.001]	8.8
0.75mm <sup>2</sup>	1.52+/-0.03 [.060+/-0.001]	10.0


-  RECOMMENDED SPARE PARTS
-  GREASE BEARING SURFACES LIGHTLY
- 3.** LUBRICATE DAILY PER THE APPLICATOR INSTRUCTION SHEET SUPPLIED WITH THE APPLICATOR.
-  APPLICATOR SPECIFIC DATA TO BE ENTERED INTO BLANK MEMORY CHIP AT ASSEMBLY. SEE BELOW FOR PART NUMBER:  
MECHANICAL FEED WITH "SMART APPLICATOR" CONVERSION: 8-2150234-4  
PNEUMATIC FEED WITH "SMART APPLICATOR" CONVERSION: 8-2150234-4  
SERVO FEED WITH "FINE CRIMP HEIGHT ADJUST": 8-2150234-5
- 5.** ADJUSTMENT OF THE STRIPPER MAY BE REQUIRED WHEN MOVING THE APPLICATOR BETWEEN BENCH AND LEADMAKER APPLICATIONS.
-  APPLY PART NUMBER 1-23419-5 LOCTITE TO THREADS OF ITEMS 50, 62 & 242.
-  GREASE THREADS, GROOVE AND O-RING ON ITEMS 139 & 153.
-  MAGNET, ITEM 166 MUST BE ORIENTED CORRECTLY IN ORDER TO PROPERLY ACTUATE THE COUNTER.
-  CRIMP HEIGHT REFERENCE SETTING WAS THE SETTING USED WHEN THE APPLICATOR WAS QUALIFIED AT THE FACTORY. ADJUSTMENT MAY BE NECESSARY WHEN RUNNING APPLICATOR IN THE FIELD.
-  SPARE FEED CAM STORAGE LOCATION REFER TO INSTRUCTION SHEET FOR ADDITIONAL INFORMATION.
-  THE RECOMMENDED SET-UP FOR END FEED APPLICATORS IS POST-FEED WITH ITEM 2119653-1. THE APPLICATOR CAN BE CONFIGURED FOR PRE-FEED WITH ITEM 2119652-1 BUT MAY ENCOUNTER PROBLEMS WITH SOME APPLICATIONS. FEED ISSUES OR TERMINAL JAMMING MAY OCCUR IN THE PRE-FEED CONFIGURATION.
-  TERMINAL LUBRICANT RECOMMENDED.

**\*WARNING**  
ON INSTALLATION, SET WIRE DISC, ITEM 40 TO LARGEST WIRE SIZE SETTING. USE OF SETTINGS BELOW MINIMUM REQUIRED CRIMP HEIGHT SETTING WILL CAUSE DAMAGE TO CRIMP TOOLING.

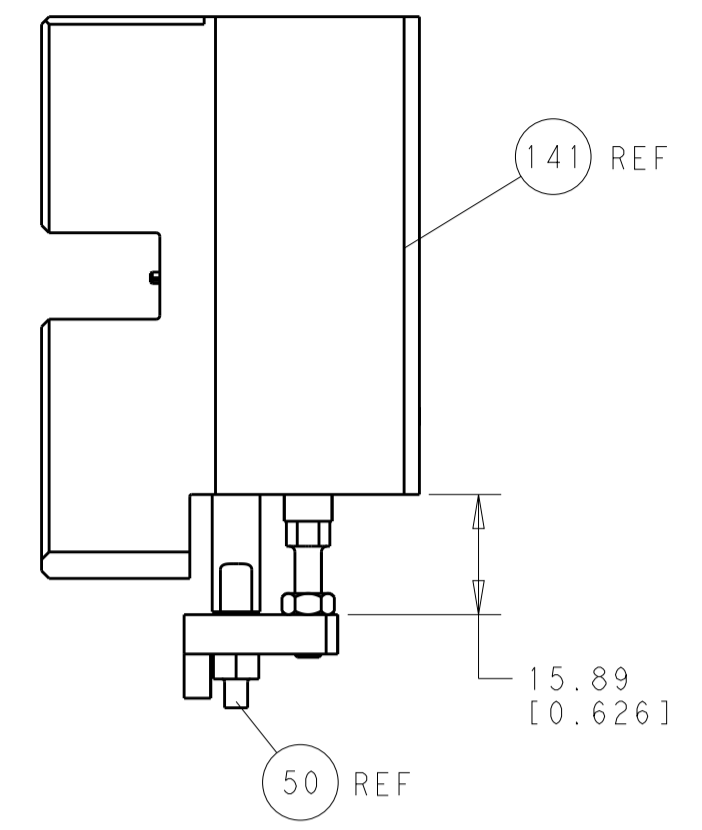
-	1	1	1	1	2119782-1	FINE ADJUST HEAD ASM, PACIFIC STYLE	251				
-	-	-	-	-	2119640-1	PUSH ROD, AIR FEED	250				
-	-	-	-	-	2079988-1	BUSHING, LCH5-12, MISUMI	249				
-	1	1	1	1	1-22279-3	SPRING, COMPRESSION	246				
-	1	1	1	1	2119082-9	CAM, SNAIL, INSULATION ADJUSTMENT	244				
-	1	1	1	1	2079764-1	WASHER, WAVE SPRING, CREST-TO-CREST	243				
-	1	1	1	1	2119083-1	RETAINER, INSULATION DIAL	242				
-	77	-	27	-	25	-	22	21	PART NO	DESCRIPTION	ITEM NO

**PACIFIC VERSION**  
Shown on sheets 3 of 4 & 4 of 4  
(Atlantic version shown on sheets 1 of 4 & 2 of 4)

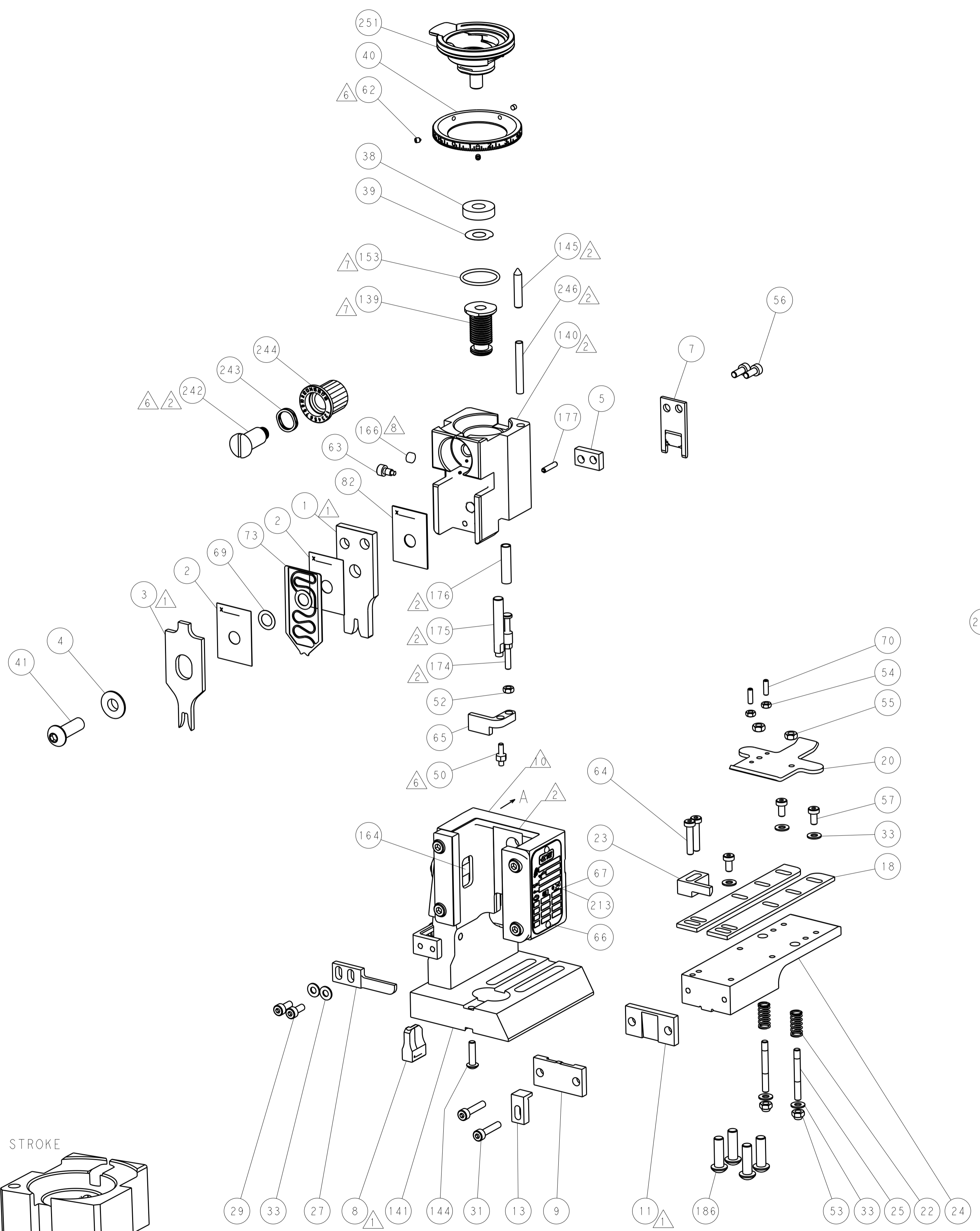
-	-	2	-	-	2168400-7	SHCS, LOW HEAD, RoHS, M5 X 10	240				
-	-	-	-	1	2119580-1	MECHANICAL FEED ASSEMBLY	239				
-	-	-	-	1	2063440-1	AIR FEED MODULE	238				
-	-	1	-	-	2119740-2	TAG, IDENTIFICATION	213				
-	4	4	4	4	2079383-9	SCR, BHSC, RoHS (M6 X 20)	186				
-	-	REF	-	-	1901697-1	FEED FINGER ASSEMBLY, EF	183				
-	1	1	1	1	6-993111-6	PIN, SLOTTED SPRING 3.0 X 14.0	177				
-	1	1	1	1	8-22280-7	SPRING, COMPRESSION	176				
-	1	1	1	1	1752353-2	GUIDE PIN, HOLDDOWN	175				
-	1	1	1	1	1901680-2	GUIDE PIN, HOLDDOWN	174				
-	-	-	2	-	21045-3	RING, RETAIN, EXTERN, 3/16 CRESCENT	172				
-	1	1	1	1	994969-1	MAGNET, RARE EARTH HIGH ENERGY	166				
-	REF	REF	REF	REF	994970-2	COUNTER, MAGNETIC	164				
-	-	-	1	-	240638-1	SPRING, FEED FINGER	163				
-	1	1	1	1	8-21084-1	O-RING, .801 ID, .070 DIA. MAT.	153				
-	-	-	1	-	2119641-2	FEED CAM, AIR FEED	152				
-	1	1	1	1	2119798-2	DETENT PIN	145				
-	1	1	1	1	2079383-8	SCR, BHSC, RoHS (M4 X 16)	144				
-	-	-	-	1	2119653-2	FEED CAM, POST FEED	142				
-	1	1	1	1	2119655-6	APPLICATOR BASIC ASSEMBLY, EF	141				
-	1	1	1	1	2119651-1	RAM, ASIAN STYLE, END FEED	140				
-	1	1	1	1	2119092-2	BOLT, ADJUSTMENT	139				
-	-	-	1	-	3-23627-7	PIN, RETAIN, GRVD, 3/16 X .854	137				
-	-	REF	-	-	SEE NOTE 4	MEMORY CHIP, PROGRAMMED	135				
-	-	1	-	-	1633743-1	SERVO FEED LATCH ASM	133				
-	1	1	1	1	455888-6	SPACER, CRIMPER	82				
-	1	1	1	1	2119791-9	DEPRESSOR, WIRE	73				
-	1	1	1	1	2119956-2	DOCUMENTATION PACKAGE	71				
-	2	2	2	2	2-18032-2	SCR, SET, FLT POINT M3 X 10.0	70				
-	1	1	1	1	2119943-1	WASHER, SPACER	69				
-	1	-	1	1	2119740-1	TAG, IDENTIFICATION	67				
-	2	2	2	2	2168078-1	SCREW, DRIVE, RH, RoHS, 2 X .188	66				
-	1	1	1	1	1901681-5	HOLDDOWN, TERMINAL	65				
-	2	2	2	2	2168400-5	SHCS, LOW HEAD, RoHS, M4 X 20	64				
-	1	1	1	1	2119793-1	LIMITER, ADJUSTMENT BOLT	63				
-	3	3	3	3	992763-5	SCR, SET, SOC, CONE POINT, M3 X 4.0	62				
-	-	-	-	1	5-18022-5	SCR, HEX HD CAP, M4 X 6.0	59				
-	-	-	-	1	2063961-1	FEED FINGER	58				
-	3	3	3	3	2168400-4	SHCS, LOW HEAD, RoHS, M4 X 8	57				
-	2	2	2	2	1-2168083-0	SCR, SKT HD CAP, RoHS, M4 X 10	56				
-	2	2	2	2	5018030-2	NUT, HEX, REG, RoHS, M4	55				
-	2	2	2	2	5018030-1	NUT, HEX, REG, RoHS, M3	54				
-	2	2	2	2	986965-8	NUT, LOCK, HEX, TORQUE (M4)	53				
-	1	1	1	1	1-5018030-0	NUT, HEX, REG, RoHS, M3.5	52				
-	-	-	-	1	2119792-2	PAWL, EF, AIR	51				
-	1	1	1	1	1-1976055-3	STANDOFF, HOLD-DOWN	50				
-	-	-	-	1	18023-9	SCR, SKT HD CAP M4 X 6.0	49				
-	-	-	-	1	2119652-1	FEED CAM, PRE FEED	48				
-	1	1	1	1	2079383-7	SCR, BHSC, RoHS (M8 X 25)	41				
-	1	1	1	1	2119645-1	DISC, NUMBERED FA WIRE ADJUSTMENT	40				
-	1	1	1	1	2119957-1	APPLICATOR SHIM PACK	39				
-	1	1	1	1	1-2119644-2	RAM WASHER, PRECISION	38				
-	7	7	7	7	1-18028-2	WASHER, FLAT, REG M4	33				
-	2	2	2	2	2168083-9	SCR, SKT HD CAP, RoHS, M4 X 20	31				
-	2	2	2	2	1-2168083-0	SCR, SKT HD CAP, RoHS, M4 X 10	29				
-	1	1	1	1	240639-1	STRIPPER (MACHINING)	27				
-	2	2	2	2	1320906-1	STUD, THREADED	25				
-	1	1	1	1	1752371-5	PLATE, STRIP GUIDE	24				
-	1	1	1	1	240825-3	PLATE, STRIP HOLD DOWN	23				
-	2	2	2	2	2-22281-3	SPRING, COMPRESSION	22				
-	1	1	1	1	1752373-4	DRAG	20				
-	2	2	2	2	1901259-5	GUIDE, LOWER STRIP	18				
-	1	1	1	1	1752360-1	SPACER, HOLD-DOWN	13				
-	1	1	1	1	240644-9	PLATE, REAR SHEAR	11				
-	-	-	-	-	-	-	10				
-	1	1	1	1	2-690495-6	PLATE, FRONT SHEAR	9				
1	1	1	1	1	1338673-5	ANVIL, COMBINATION	8				
-	1	1	1	1	1-2217206-3	BLADE, SLUG	7				
-	1	1	1	1	240641-3	SPACER	5				
-	1	1	1	1	238009-1	BLOCK, FL CRIMPER SPACER	4				
1	1	1	1	1	2119582-3	CRIMPER, INSULATION F PREMIUM	3				
-	2	2	2	2	455888-1	SPACER, CRIMPER	2				
1	1	1	1	1	1490189-6	CRIMPER, WIRE	1				
-	77	-	27	-	25	-	22	21	PART NO	DESCRIPTION	ITEM NO

DIMENSIONS: mm		TOLERANCES UNLESS OTHERWISE SPECIFIED:		DWN: HOFFNER 16DEC2011		 TE Connectivity Harrisburg, PA 17105-3608	
0 PL C	±	5		CHK: T. ELBIN 19DEC2011	NAME: Ocean End Feed Applicator		RESTRICTED TO:
1 PL C	±	0.5		APVD: T. ELBIN 19DEC2011	PRODUCT SPEC: -		SIZE: A1
2 PL C	±	0.13		APPLICATION SPEC: -		CAGE CODE: 00779	DRAWING NO: C=2150234
3 PL C	±	0.013		WEIGHT: -		SCALE: 1:1	SHEET 3 OF 4
4 PL C	±	0.001		MATERIAL: -		REV: B	
ANGLES	±	0.0001		FINISH: -			
Customer Accessible Production Drawing				SHEETS 1 & 2 ARE NOT REQUIRED FOR PACIFIC VERSION			

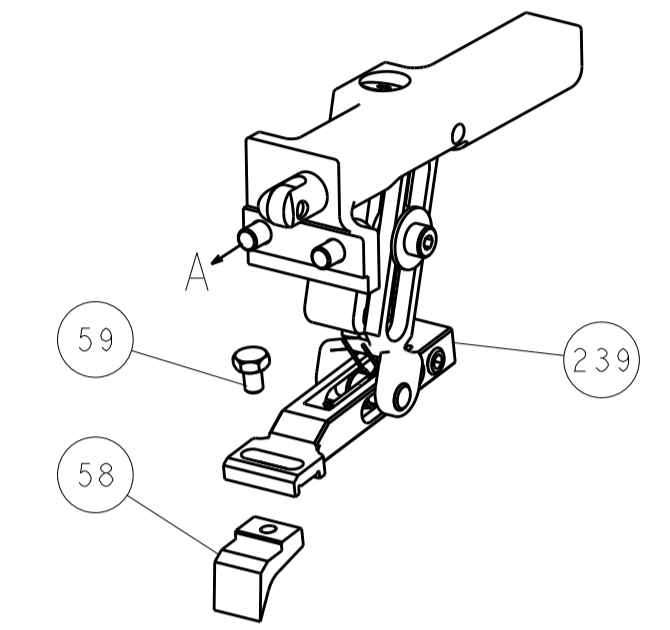
LOC		DIST		REVISIONS			
A	66	P	LTM	DESCRIPTION	DATE	OWN	APVD
		-		SEE SHEET 1			



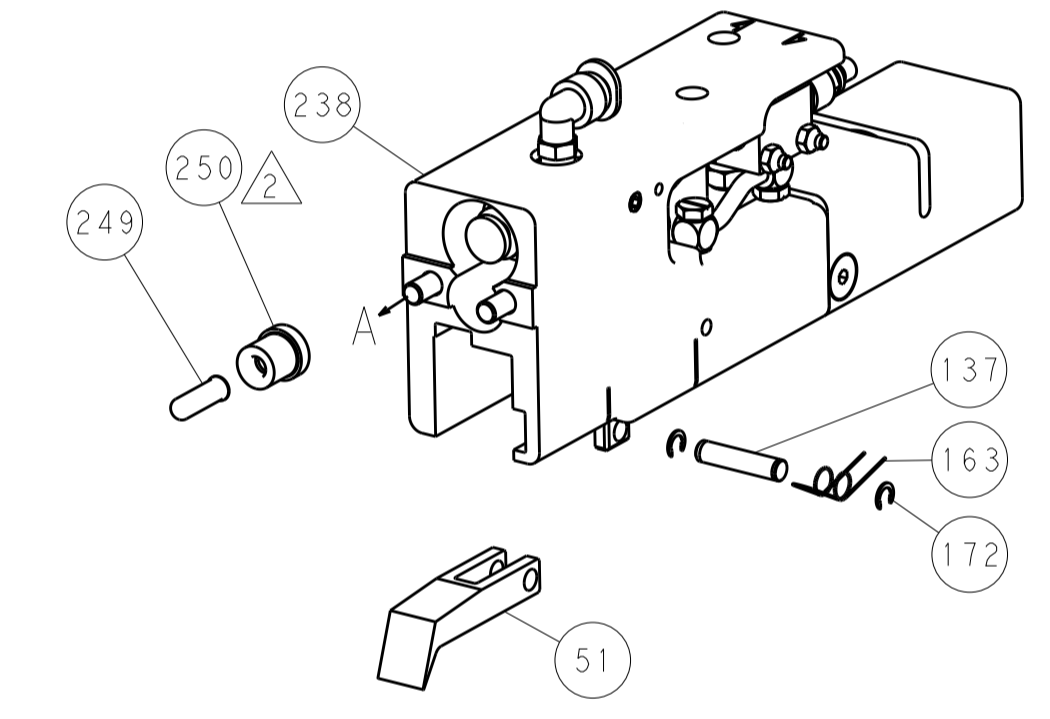
HOLDDOWN SET-UP



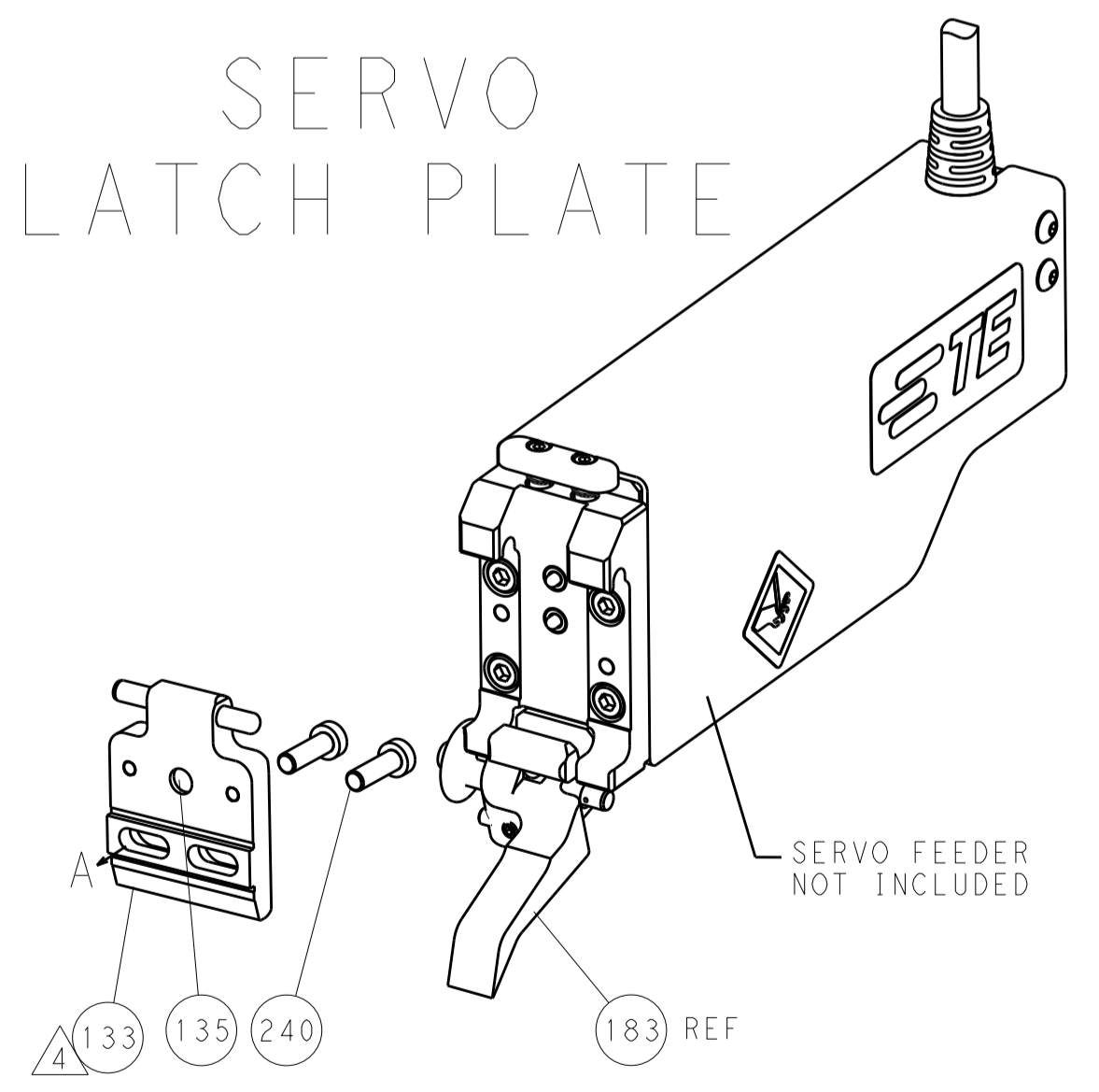
FEED TYPE  
MECHANICAL



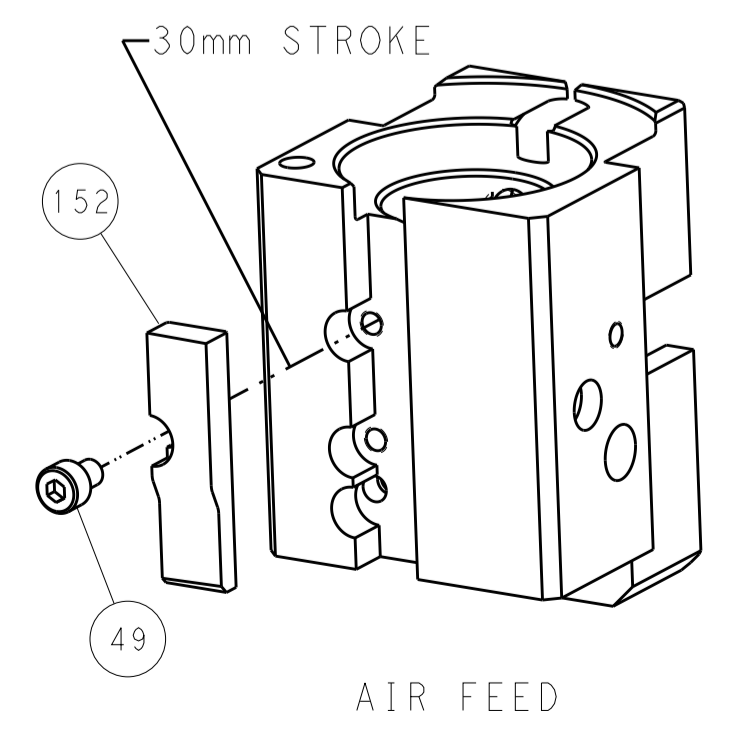
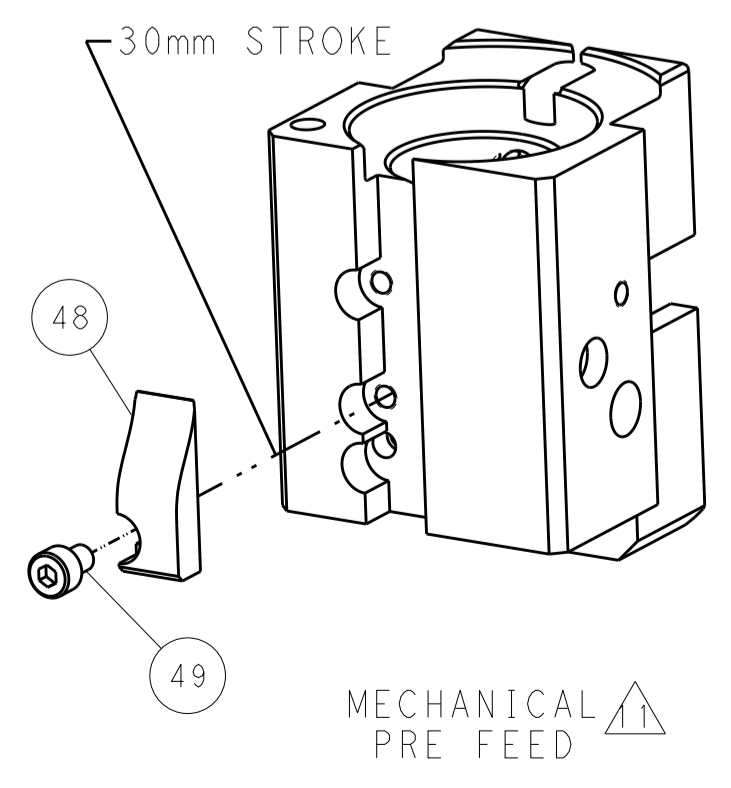
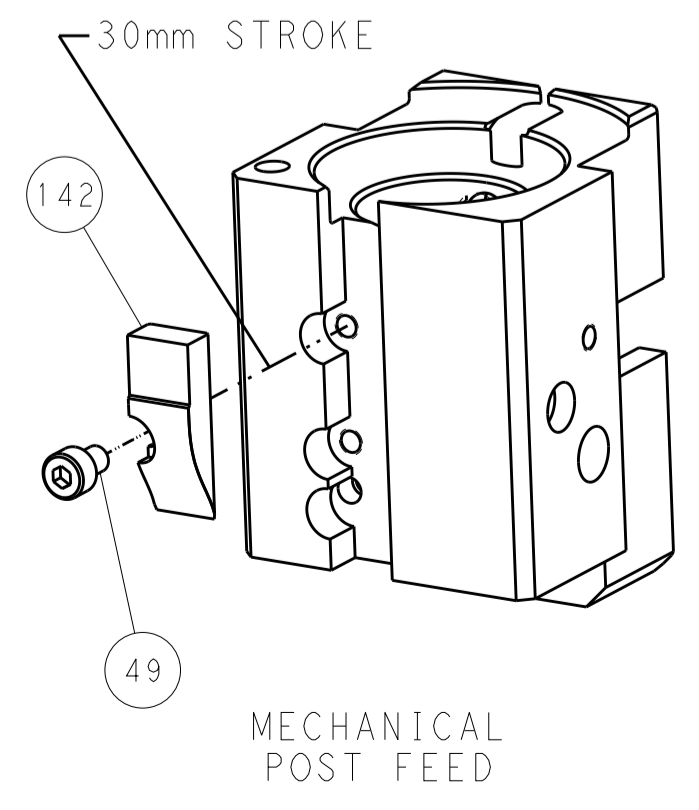
PNEUMATIC



SERVO  
LATCH PLATE



CAM POSITIONS



**PACIFIC VERSION**  
Shown on sheets 3 of 4 & 4 of 4  
(Atlantic version shown on sheets 1 of 4 & 2 of 4)

<small>THIS DRAWING IS UNPUBLISHED. RELEASED FOR PUBLICATION. COPYRIGHT 20 BY TYCO ELECTRONICS CORPORATION. ALL RIGHTS RESERVED.</small>		DWN: HOFFNER 16DEC2011 CHK: T. ELBIN 19DEC2011 APVD: T. ELBIN 19DEC2011	TE Connectivity Harrisburg, PA 17105-3608
DIMENSIONS: mm TOLERANCES UNLESS OTHERWISE SPECIFIED: 0 PLC ±.5 1 PLC ±.13 3 PLC ±.013 4 PLC ±.001 ANGLES ±.1		PRODUCT SPEC APPLICATION SPEC WEIGHT SCALE: 1:1	NAME: Ocean End Feed Applicator SIZE: A1 CAGE CODE: 00779 DRAWING NO: C-2150234 SHEET 4 OF 4 REV B