

6

5

4

3

2

1

**MATERIAL AND FINISH:**

Insulator: Polycarbonate, UL-94V-0 rated  
Contacts: Brass  
Screw: Brass, Nickel Plated over Copper  
Nut: Brass, Nickel Plated

**ELECTRICAL SPECIFICATIONS:**

Current rating: 10 A/15 A  
Voltage rating: 250 VAC  
Insulation resistance: 100 Mohm min. at 500 VDC  
Dielectric withstanding voltage: 2000 VAC for one minute

**ORDERING CODE:**



43R02-2    1     
          1    2


**1) COLOR**




1 = BLACK  
2 = GRAY

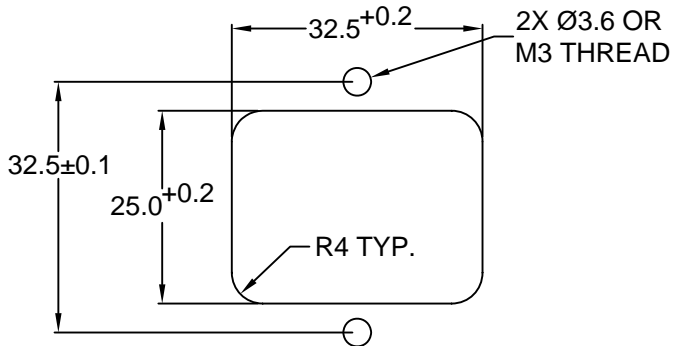
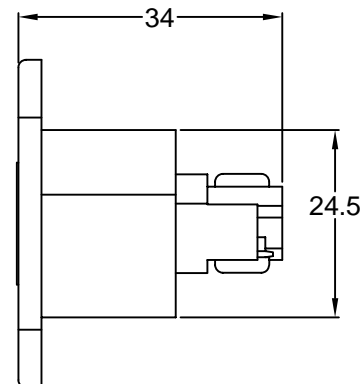
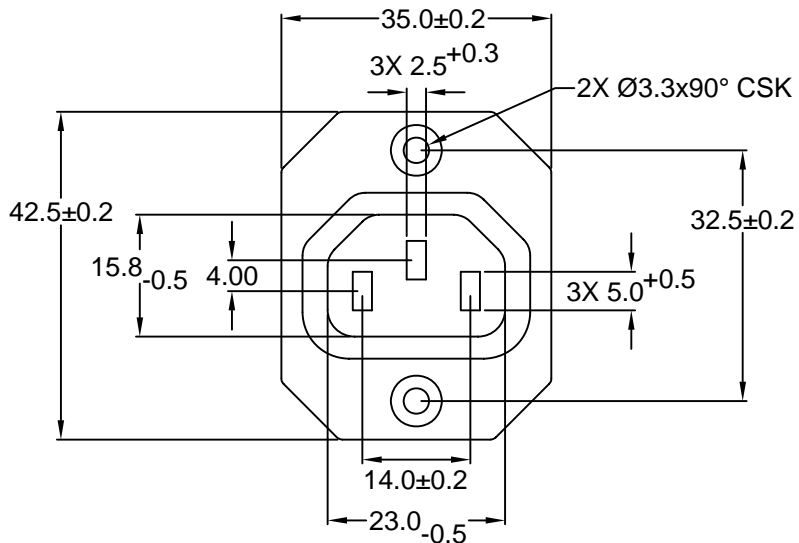
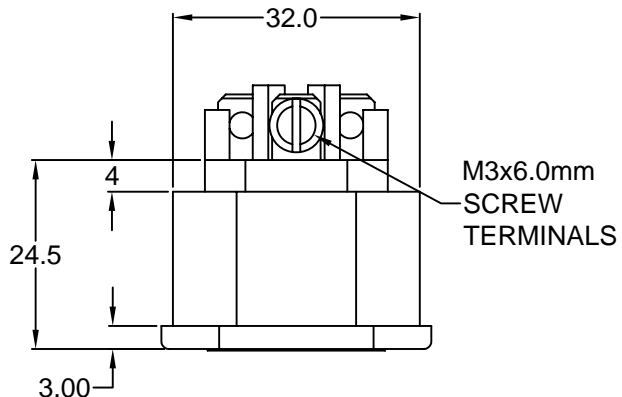
**2) ELECTRICAL CIRCUIT CONFIGURATION**

1 = 10A 250V 70°C 

15A 250V 70°C    
2+GROUND 

2 = 10A 250V 120°C 

15A 250V 120°C    
2+GROUND 



RECOMMENDED  
PANEL CUTOUT

RoHS  
COMPLIANT

TOLERANCE UNLESS OTHERWISE SPECIFIED	
X	± 1
X.X	± 0.4
X.XX	± 0.20

**Power Dynamics, Inc.**  
Phone: 973 560-0019 Whippany, New Jersey Fax: 973 560-0076

PART: 10A/15A IEC 60320 APPL. OUTLET; SCREW  
TERMINALS; CROSS FLANGE, PANEL MOUNT

DRAWN BY	GQ	DATE:	10/04/01
CHECK BY	TD	DATE:	10/10/01
APPR BY	PB	DATE:	10/10/01

PART #: 43R02-2X1X		SHEET 1 of 1
SIZE: A	ALL DIMENSIONS FOR REFERENCE ONLY DIMENSIONS ARE IN MILLIMETERS	
SCALE: NTS	REV:	

D

C

B

A

REV	DATE	CHANGE	CHNG	CHK	APPR

6

5

4

3

2

1