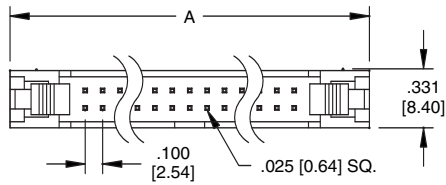


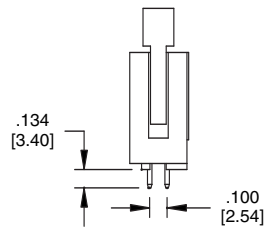
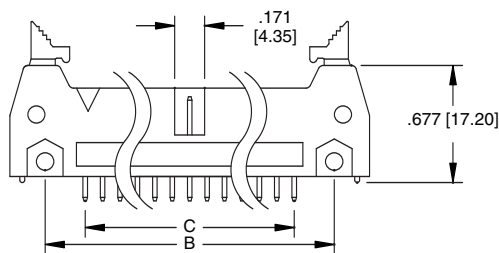
#### MHR STRAIGHT PCB MOUNT



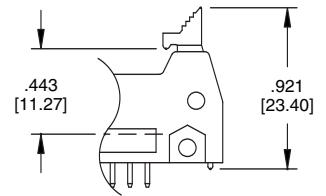
$$A = .100 [2.54] \times \text{No. of Spaces} + .860 [21.84]$$

$$B = .100 [2.54] \times \text{No. of Spaces} + .460 [11.68]$$

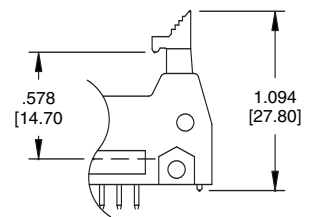
$$C = .100 [2.54] \times \text{No. of Spaces}$$



#### Latch Options

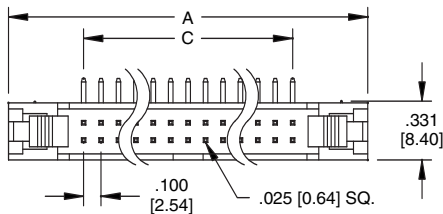


Header with Short Ejector/Latch for Sockets without Strain Reliefs



Header with Long Ejector/Latch for Sockets with Strain Reliefs

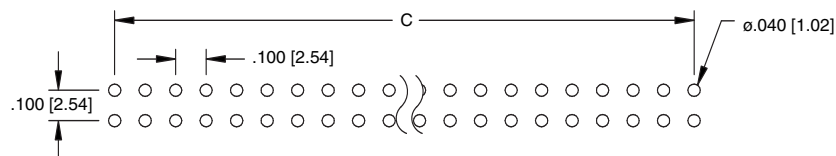
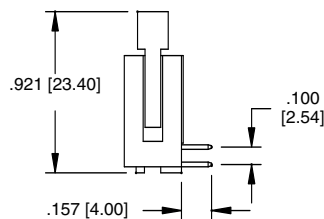
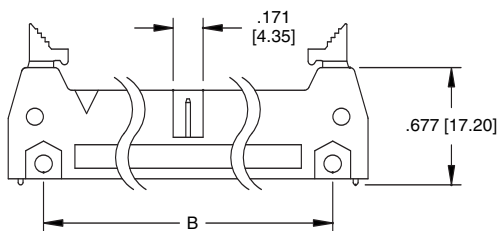
#### MHR RIGHT ANGLE PCB MOUNT



$$A = .100 [2.54] \times \text{No. of Spaces} + .860 [21.84]$$

$$B = .100 [2.54] \times \text{No. of Spaces} + .460 [11.68]$$

$$C = .100 [2.54] \times \text{No. of Spaces}$$



#### Recommended PCB Layout