



**ON Semiconductor®**

<http://onsemi.com>

# LC717A10AR

CMOS LSI

## Capacitance-Digital-Converter LSI for Electrostatic Capacitive Touch Sensors

### Overview

The LC717A10AR is a high-performance and low-cost capacitance-digital-converter LSI for electrostatic capacitive touch sensor, especially focused on usability.

It has 16 channels capacitance-sensor input. This makes it ideal for use in the products that need many switches.

Since the calibration function and the judgment of ON/OFF are automatically performed in LSI internal, it can make development time more short. A detection result (ON/OFF) for each input can be read out by the serial interface (I<sup>2</sup>C compatible bus or SPI).

Also, measurement value of each input can be read out as 8-bit digital data. Moreover, gain and other parameters can be adjusted using serial interface.

### Features

- Detection system: Differential capacitance detection (Mutual capacitance type)
- Input capacitance resolution: Can detect capacitance changes in the femto Farad order
- Measurement interval (16 differential inputs): 30ms (Typ) (at initial configuration),  
6ms (Typ) (at minimum interval configuration)
- External components for measurement: Not required
- Interface: I<sup>2</sup>C \* compatible bus or SPI selectable.
- Current consumption: 570μA (Typ) (V<sub>DD</sub> = 2.8V), 1.3mA (Typ) (V<sub>DD</sub> = 5.5V)
- Supply voltage: 2.6V to 5.5V
- Detection operations: Switch
- Packages: VCT28

\* I<sup>2</sup>C Bus is a trademark of Philips Corporation.

# LC717A10AR

## Specifications

### Absolute Maximum Ratings at Ta = +25°C

Parameter	Symbol	Ratings (V <sub>SS</sub> = 0V)	Unit	Remarks
Supply voltage	V <sub>DD</sub>	-0.3 to +6.5	V	
Input voltage	V <sub>IN</sub>	-0.3 to V <sub>DD</sub> +0.3	V	*1
Output voltage	V <sub>OUT</sub>	-0.3 to V <sub>DD</sub> +0.3	V	*2
Power dissipation	Pd max	160	mW	Ta = +105°C, Mounted on a substrate *3
Storage temperature	Tstg	-55 to +125	°C	

\*1) Apply to Cin0 to 15, Cref, CrefAdd, nRST, SCL, SDA, SA0, SA1, SCK, SI, nCS

\*2) Apply to Cdrv, SDA, SO, INTOUT

\*3) 4-layer glass epoxy board (40×50×0.8t mm)

Stresses exceeding Maximum Ratings may damage the device. Maximum Ratings are stress ratings only. Functional operation above the Recommended Operating Conditions is not implied. Extended exposure to stresses above the Recommended Operating Conditions may affect device reliability.

### Recommended Operating Conditions

Parameter	Symbol	Conditions	min	typ	max	Unit	Remarks
Operating supply voltage	V <sub>DD</sub>		2.6		5.5	V	
Supply ripple + noise	Vpp				±20	mV	*1
Operating temperature	Topr		-40	25	105	°C	

\*1) We recommend connecting large and small capacitance between V<sub>DD</sub> and V<sub>SS</sub>.

In this case, the small capacitance is equal to or more than 0.1μF, and layout nearby LSI.

### Electrical Characteristics at V<sub>SS</sub> = 0V, V<sub>DD</sub> = 2.6 to 5.5V, Ta = -40 to +105°C

\* Unless otherwise specified, the Cdrv drive frequency is f<sub>CDRV</sub> = 143kHz.

\* Not tested at low temperature before shipment.

Parameter	Symbol	Conditions	min	typ	max	Unit	Remarks
Capacitance detection resolution	N				8	bit	
Output noise RMS	N <sub>RMS</sub>	minimum gain setting			±1.0	LSB	*1 *3
Input offset capacitance adjustment range	CoffRANGE			±8.0		pF	*1 *3
Input offset capacitance adjustment resolution	CoffRESO			8		bit	
Cin offset drift	CinDRIFT	minimum gain setting			±8	LSB	*1
Cin detection sensitivity	CinSENSE	minimum gain setting	0.04		0.12	LSB/IF	*2
Cin pin leak current	I <sub>Cin</sub>	Cin = Hi-Z		±25	±500	nA	
Cin allowable parasitic input capacitance	CinSUB	Cin against V <sub>SS</sub>			30	pF	*1 *3
Cdrv drive frequency	f <sub>CDRV</sub>		100	143	186	kHz	
Cdrv pin leak current	I <sub>CDRV</sub>	Cdrv = Hi-Z		±25	±500	nA	
nRST minimum pulse width	t <sub>NRST</sub>		1			μs	*1
Power-on reset time	t <sub>POR</sub>				20	ms	*1
Power-on reset operation condition: Hold time	t <sub>POROP</sub>		10			ms	*1
Power-on reset operation condition: Input voltage	V <sub>POROP</sub>				0.1	V	*1
Power-on reset operation condition: Power supply rise rate	t <sub>VDD</sub>	0V to V <sub>DD</sub>	1			V/ms	*1

Continued to the next page.

## LC717A10AR

Continued from the previous page.

Parameter	Symbol	Conditions	min	typ	max	Unit	Remarks
Pin input voltage	V <sub>IH</sub>	High input	0.8V <sub>DD</sub>			V	*1 *4
	V <sub>IL</sub>	Low input			0.2V <sub>DD</sub>		
Pin output voltage	V <sub>OH</sub>	High output (I <sub>OH</sub> = +3mA)	0.8V <sub>DD</sub>			V	*5
	V <sub>OL</sub>	Low output (I <sub>OL</sub> = -3mA)			0.2V <sub>DD</sub>		
SDA pin output voltage	V <sub>OL</sub> I <sup>2</sup> C	SDA Low output (I <sub>OL</sub> = -3mA)			0.4	V	
Pin leak current	I <sub>LEAK</sub>				±1	μA	*6
Current consumption	I <sub>DD</sub>	When initial setting and non-touch V <sub>DD</sub> = 2.8V		570	700	μA	*1 *3
		When initial setting and non-touch V <sub>DD</sub> = 5.5V		1.3	1.6	mA	*1 *3
	I <sub>STBY</sub>	During Sleep process				1	μA

\*1) Design guarantee values (not tested before shipment)

\*2) Measurements conducted using the test mode in the LSI

\*3) T<sub>a</sub> = +25°C

\*4) Apply to nRST, SCL, SDA, SA0, SA1, SCK, SI, nCS

\*5) Apply to Cdrv, SO, INTOUT

\*6) Apply to nRST, SCL, SDA, SA0, SA1, SCK, SI, nCS

# LC717A10AR

## I<sup>2</sup>C Compatible Bus Timing Characteristics at V<sub>SS</sub> = 0, V<sub>DD</sub> = 2.6 to 5.5V, Ta = -40 to +105°C

\*Not tested at low temperature before shipment

Parameter	Symbol	Pin Name	Conditions	min	typ	max	Unit	Remarks
SCL clock frequency	f <sub>SCL</sub>	SCL				400	kHz	
START condition hold time	t <sub>HD;STA</sub>	SCL SDA		0.6			μs	
SCL clock low period	t <sub>LOW</sub>	SCL		1.3			μs	
SCL clock high period	t <sub>HIGH</sub>	SCL		0.6			μs	
Repeated START condition setup time	t <sub>SU;STA</sub>	SCL SDA		0.6			μs	*1
Data hold time	t <sub>HD;DAT</sub>	SCL SDA		0		0.9	μs	
Data setup time	t <sub>SU;DAT</sub>	SCL SDA		100			μs	*1
SDA, SCL rise/fall time	t <sub>r</sub> / t <sub>f</sub>	SCL SDA				300	μs	*1
STOP condition setup time	t <sub>SU;STO</sub>	SCL SDA		0.6			μs	
STOP-to-START bus release time	t <sub>BUF</sub>	SCL SDA		1.3			μs	*1

\*1) Design guarantee values (not tested before shipment)

## SPI Bus Timing Characteristics at V<sub>SS</sub> = 0, V<sub>DD</sub> = 2.6 to 5.5V, Ta = -40 to +105°C

\*Not tested at low temperature before shipment

Parameter	Symbol	Pin Name	Conditions	min	typ	max	Unit	Remarks
SCK clock frequency	f <sub>SCK</sub>	SCK				5	MHz	
SCK clock Low time	t <sub>LOW</sub>	SCK		90			ns	*1
SCK clock High time	t <sub>HIGH</sub>	SCK		90			ns	*1
Input signal rise/fall time	t <sub>r</sub> / t <sub>f</sub>	nCS SCK SI				300	ns	*1
nCS setup time	t <sub>SU;nCS</sub>	nCS SCK		90			ns	*1
SCK clock setup time	t <sub>SU;SCK</sub>	nCS SCK		90			ns	*1
Data setup time	t <sub>SU;SI</sub>	SCK SI		20			ns	*1
Data hold time	t <sub>HD;SI</sub>	SCK SI		30			ns	*1
nCS hold time	t <sub>HD;nCS</sub>	nCS SCK		90			ns	*1
SCK clock hold time	t <sub>HD;SCK</sub>	nCS SCK		90			ns	*1
nCS standby pulse width	t <sub>CPH</sub>	nCS		90			ns	*1
Output high impedance time from nCS	t <sub>CHZ</sub>	nCS SO				80	ns	*1
Output data determination time	t <sub>v</sub>	SCK SO				80	ns	*1
Output data hold time	t <sub>HD;SO</sub>	SCK SO		0			ns	*1
Output low impedance time from SCK clock	t <sub>CLZ</sub>	SCK SO		0			ns	*1

\*1) Design guarantee values (not tested before shipment)

# LC717A10AR

## Power-on Reset (POR)

When power is turned on, power-on reset is enabled inside the LSI and its state is released after a certain power-on reset time,  $t_{POR}$ . Power-on Reset operation condition; Power supply rise rate  $t_{VDD}$  must be at least 1V/ms.

Since INTOUT pin changes from “High” to “Low” at the same time as the released of power-on reset, it is possible to verify the timing of release of power-on reset externally.

During power-on reset, Cin, Cref and CrefAdd are unknown.

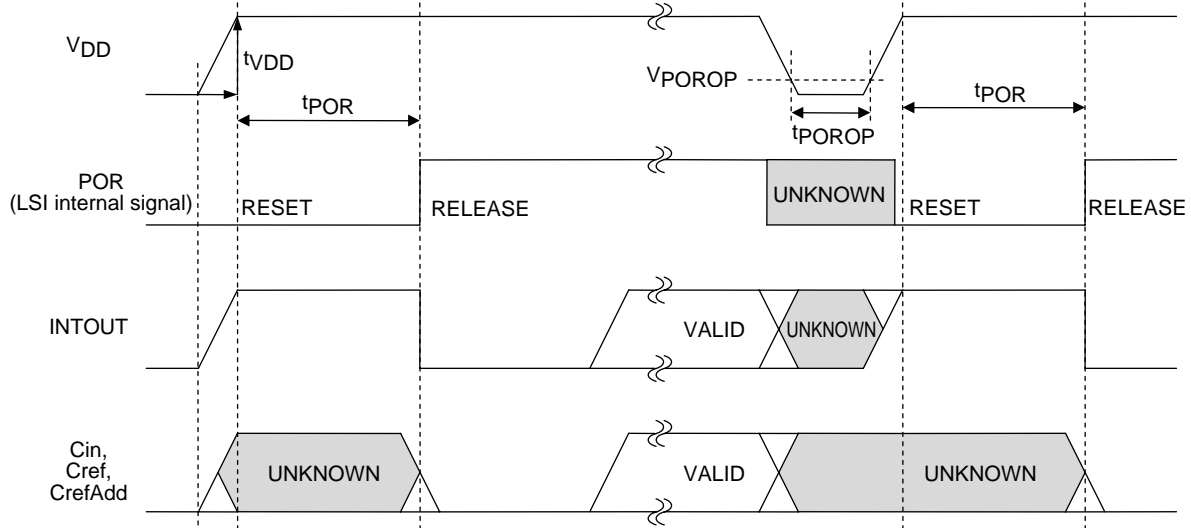


fig.1

## I<sup>2</sup>C Compatible Bus Data Timing

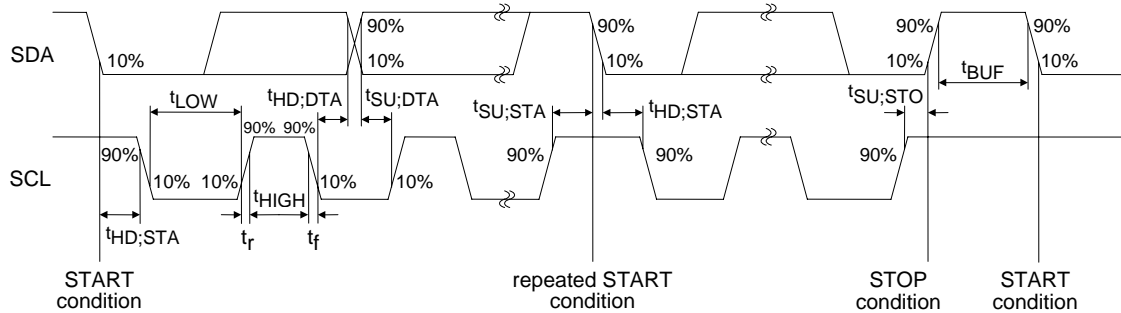


fig.2

## I<sup>2</sup>C Compatible Bus Communication Formats

- Write format (data can be written into sequentially incremented addresses)



fig.3

- Read format (data can be read from sequentially incremented addresses)

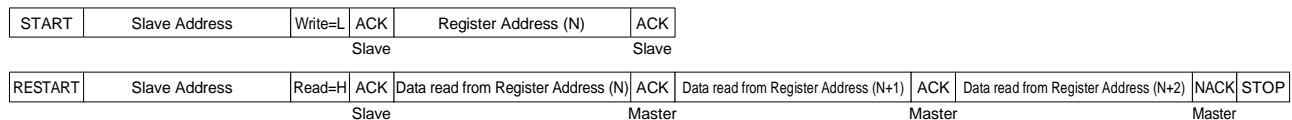


fig.4

# LC717A10AR

## I<sup>2</sup>C Compatible Bus Slave Address

Selection of two kinds of addresses is possible through the SA0 and SA1 terminals.

SA1 input	SA0 input	7bit slave address	Binary notation	8bit slave address
Low	Low	0x16	00101100b (Write)	0x2C
			00101101b (Read)	0x2D
Low	High	0x17	00101110b (Write)	0x2E
			00101111b (Read)	0x2F
High	Low	0x18	00110000b (Write)	0x30
			00110001b (Read)	0x31
High	High	0x19	00110010b (Write)	0x32
			00110011b (Read)	0x33

## SPI Data Timing (SPI Mode 0 / Mode 3)

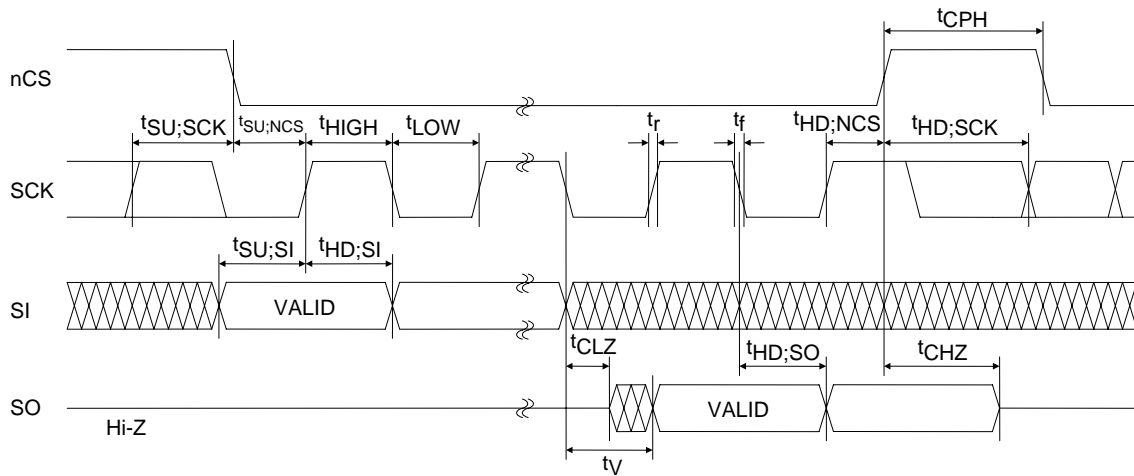


fig.5

## SPI Communication Formats (Example of Mode 0)

- Write format (data can be written into sequentially incremented addresses with preserving nCS = L)

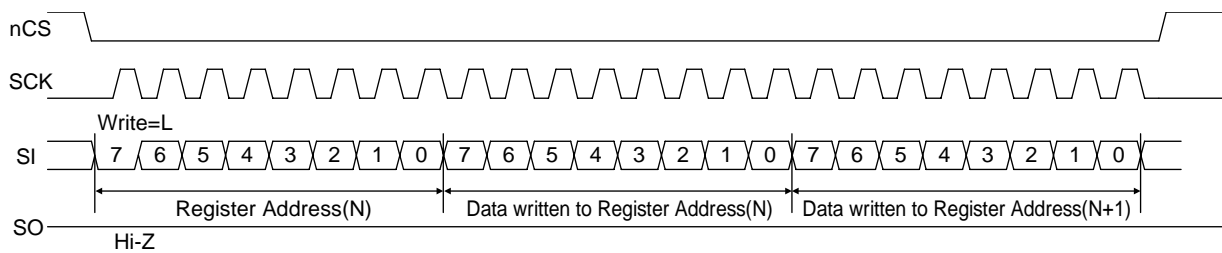


fig.6

- Read format (data can be read from sequentially incremented addresses with preserving nCS = L)

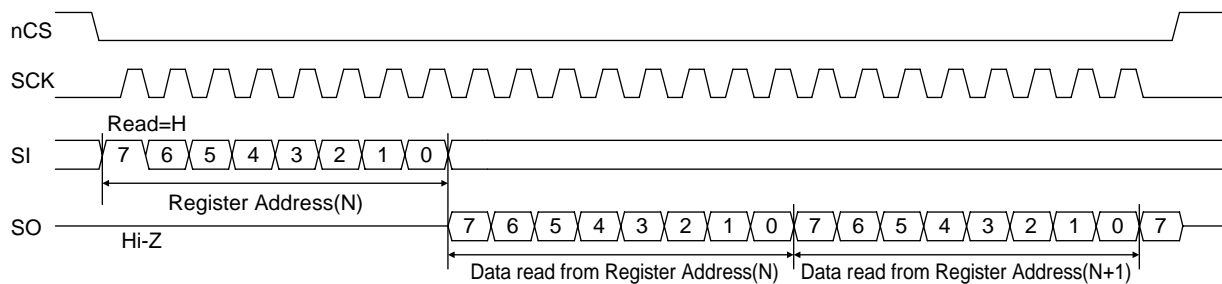


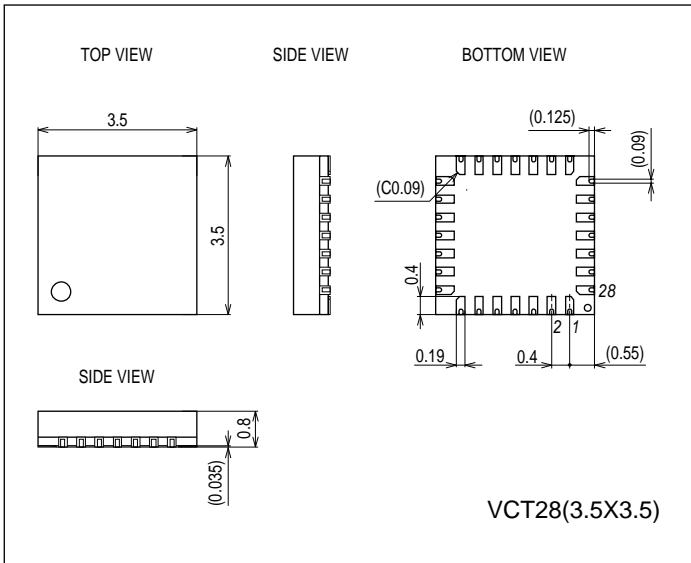
fig.7

# LC717A10AR

## Package Dimensions [LC717A10AR]

unit : mm (typ)

3357

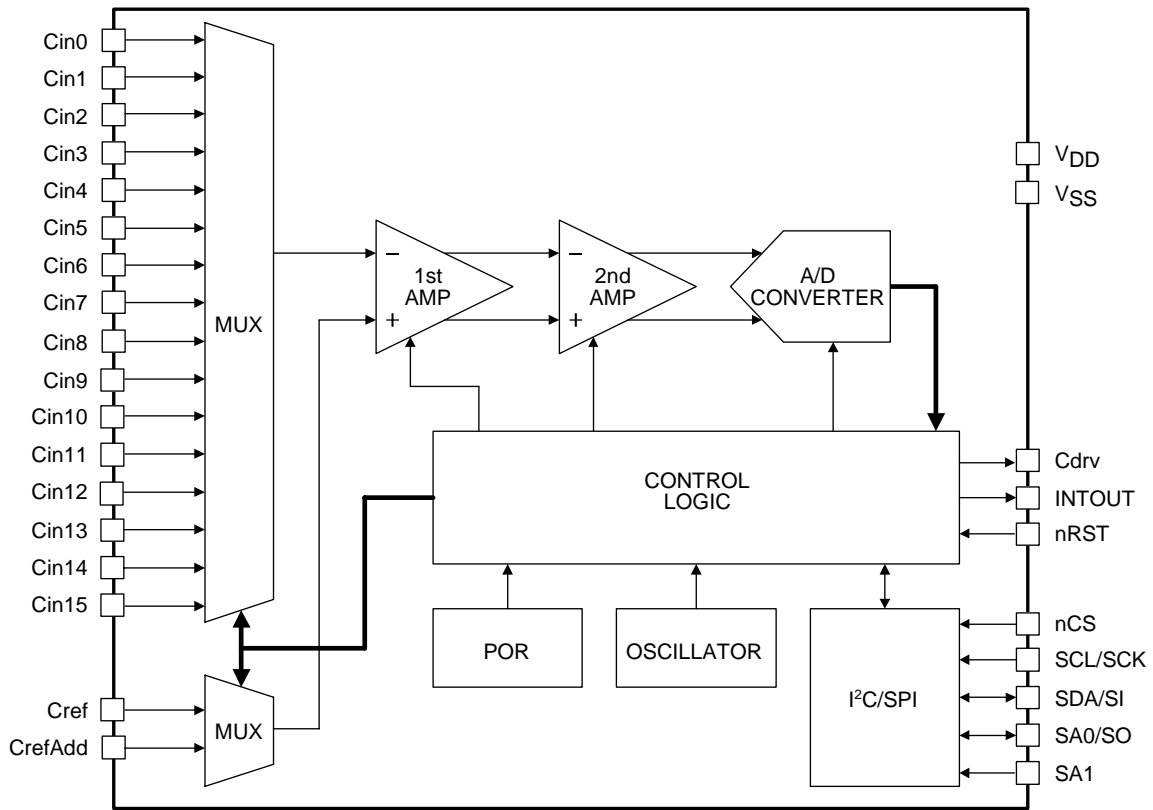


## Pin Assignment

Pin No.	Pin Name	Pin No.	Pin Name
1	Cin0	15	Cin12
2	Cin1	16	Cin13
3	Cin2	17	Cin14
4	Cin3	18	Cin15
5	VDD	19	Cref
6	VSS	20	CrefAdd
7	Cin4	21	Cdrv
8	Cin5	22	INTOUT
9	Cin6	23	SA1
10	Cin7	24	SCL/SCK
11	Cin8	25	SDA/SI
12	Cin9	26	SA0/SO
13	Cin10	27	nCS
14	Cin11	28	nRST

# LC717A10AR

## Block Diagram



LC717A10AR is capacitance-digital-converter LSI capable of detecting changes in capacitance in the order of femto Farads. It consists of an oscillation circuit that generates the system clock, a power-on reset circuit that resets the system when the power is turned on, a multiplexer that selects the input channels, a two-stage amplifier that detects the changes in the capacitance and outputs analog-amplitude values, a A/D converter that converts the analog-amplitude values into digital data, an I<sup>2</sup>C compatible bus or a SPI that enables serial communication with external devices and a control logic that controls the entire chip.



# LC717A10AR

## Pin Functions

Pin Name	I/O	Pin Functions	Pin Type
Cin0	I/O	Capacitance sensor input	
Cin1	I/O	Capacitance sensor input	
Cin2	I/O	Capacitance sensor input	
Cin3	I/O	Capacitance sensor input	
Cin4	I/O	Capacitance sensor input	
Cin5	I/O	Capacitance sensor input	
Cin6	I/O	Capacitance sensor input	
Cin7	I/O	Capacitance sensor input	
Cin8	I/O	Capacitance sensor input	
Cin9	I/O	Capacitance sensor input	
Cin10	I/O	Capacitance sensor input	
Cin11	I/O	Capacitance sensor input	
Cin12	I/O	Capacitance sensor input	
Cin13	I/O	Capacitance sensor input	
Cin14	I/O	Capacitance sensor input	
Cin15	I/O	Capacitance sensor input	
Cref	I/O	Reference capacitance input	
CrefAdd	I/O	Reference capacitance input for addition	
Cdrv	O	Output for capacitance sensors drive	
INTOUT	O	Interrupt output	
SCL/SCK	I	Clock input (I <sup>2</sup> C) / Clock input (SPI)	
nCS	I	Interface selection / Chip select inverting input (SPI)	
nRST	I	External reset signal inverting input	
SA1	I	Slave address selection (I <sup>2</sup> C)	
SDA/SI	I/O	Data input and output (I <sup>2</sup> C) / Data input (SPI)	

Continued to the next page.

# LC717A10AR

Continued from the previous page.

Pin Name	I/O	Pin Functions	Pin Type
SA0/SO	I/O	Slave address selection (I <sup>2</sup> C) / Data output (SPI)	
V <sub>DD</sub>		Power supply (2.6V to 5.5V) *1	
V <sub>SS</sub>		Ground (Earth) *1 *2	

\*1) Inserting a high-valued capacitor and a low-valued capacitor in parallel between V<sub>DD</sub> and V<sub>SS</sub> is recommended. In this case, the small-valued capacitor should be at least 0.1μF, and is mounted near the LSI.

\*2) When V<sub>SS</sub> terminal is not grounded in battery-powered mobile equipment, detection sensitivity may be degraded.

## Details of Pin Functions

### ●Cin0 to Cin15

These are the capacitance-sensor-input pins. These pins are used by connecting them to the touch switch pattern.

Cin and the Cdrv wire patterns should be close to each other. By doing so, Cdrv and Cin patterns are capacitively coupled. Therefore, LSI can detect capacitance change near each pattern as 8bit digital data.

However, if the shape of each pattern or the capacitively coupled value of Cdrv is not appropriate, it may not be able to detect the capacitance change correctly.

In this LSI, there is a two-stage amplifier that detects the changes in the capacitance and outputs analog-amplitude values. Cin0 to Cin15 are connected to the inverting input of the 1st amplifier.

During measurement process, channels other than the one being measured are all in “Low” condition.

Leave the unused terminals open.

### ●Cref, CrefAdd

These are the reference-capacitance-input pins. These are used by connecting to the wire pattern like Cin pins or are used by connecting any capacitance between this pin and Cdrv pin.

In this LSI, there is a two-stage amplifier that detects the changes in the capacitance and outputs analog-amplitude values. Cref is connected to the non-inverting input of the 1st amplifier.

Due to the parasitic capacitance generated in the wire connections of Cin pins and their patterns, as well as the one generated between the wire patterns of Cin and Cdrv pins, Cref may not detect capacitance change of each Cin pin accurately. In this case, connect an appropriate capacitance between Cref and Cdrv to detect capacitance change accurately.

However, if the difference between the parasitic capacitance of each Cin pin is extremely large, it may not detect capacitance change of each Cin pin correctly.

CrefAdd can be used as additional terminal for Cref. Leave the CrefAdd open if not in used.

### ●Cdrv

It is the output pin for capacitance sensors drive. It outputs the pulse voltage which is needed to detect capacitance at Cin0 to Cin15.

Cdrv and Cin wire patterns should be close to each other so that they are capacitively coupled.

### ●INTOUT

It is the interrupt-output pin.

It is used by connecting to a main microcomputer if necessary, and use as interrupt signal. (High Active)

Leave the terminal open if not in used.

### ●SCL/SCK

Clock input (I<sup>2</sup>C) / Clock input (SPI)

It is the clock input pin of the I<sup>2</sup>C compatible bus or the SPI depending on the mode of operation.

## LC717A10AR

---

- nCS

Interface selection / Chip-select-inverting input (SPI)

Selection of I<sup>2</sup>C compatible bus mode or SPI mode is through this terminal. After initialization, the LSI is automatically in I<sup>2</sup>C compatible bus mode. To continually use I<sup>2</sup>C compatible bus mode, fix nCS pin to “High”. To switch to SPI mode after LSI initialization, change the nCS input “High” → “Low”. The nCS pin is used as the chip-select-inverting input pin of SPI, and SPI mode is kept until LSI is again initialized.

- nRST

It is the external-reset-signal-inverting-input pin. When nRST pin is “Low”, LSI is in reset state.

Each pin (Cin0 to 15, Cref, CrefAdd) is “Hi-Z” during reset state.

- SDA/SI

Data input and output (I<sup>2</sup>C) / Data input (SPI)

It is the data input and output pin of the I<sup>2</sup>C compatible bus or the data input pin of the SPI depending on the mode of operation.

- SA0/SO

Slave address selection (I<sup>2</sup>C) / Data output (SPI)

It is the slave address selection pin of the I<sup>2</sup>C compatible bus or the data output pin of the SPI depending on the mode of operation.

- SA1

Slave address selection (I<sup>2</sup>C)

It is the slave address selection pin of the I<sup>2</sup>C compatible bus.

When SPI mode, connect to the SA1 pin to GND.

ON Semiconductor and the ON logo are registered trademarks of Semiconductor Components Industries, LLC (SCILLC). SCILLC owns the rights to a number of patents, trademarks, copyrights, trade secrets, and other intellectual property. A listing of SCILLC's product/patent coverage may be accessed at [www.onsemi.com/site/pdf/Patent-Marking.pdf](http://www.onsemi.com/site/pdf/Patent-Marking.pdf). SCILLC reserves the right to make changes without further notice to any products herein. SCILLC makes no warranty, representation or guarantee regarding the suitability of its products for any particular purpose, nor does SCILLC assume any liability arising out of the application or use of any product or circuit, and specifically disclaims any and all liability, including without limitation special, consequential or incidental damages. "Typical" parameters which may be provided in SCILLC data sheets and/or specifications can and do vary in different applications and actual performance may vary over time. All operating parameters, including "Typicals" must be validated for each customer application by customer's technical experts. SCILLC does not convey any license under its patent rights nor the rights of others. SCILLC products are not designed, intended, or authorized for use as components in systems intended for surgical implant into the body, or other applications intended to support or sustain life, or for any other application in which the failure of the SCILLC product could create a situation where personal injury or death may occur. Should Buyer purchase or use SCILLC products for any such unintended or unauthorized application, Buyer shall indemnify and hold SCILLC and its officers, employees, subsidiaries, affiliates, and distributors harmless against all claims, costs, damages, and expenses, and reasonable attorney fees arising out of, directly or indirectly, any claim of personal injury or death associated with such unintended or unauthorized use, even if such claim alleges that SCILLC was negligent regarding the design or manufacture of the part. SCILLC is an Equal Opportunity/Affirmative Action Employer. This literature is subject to all applicable copyright laws and is not for resale in any manner.