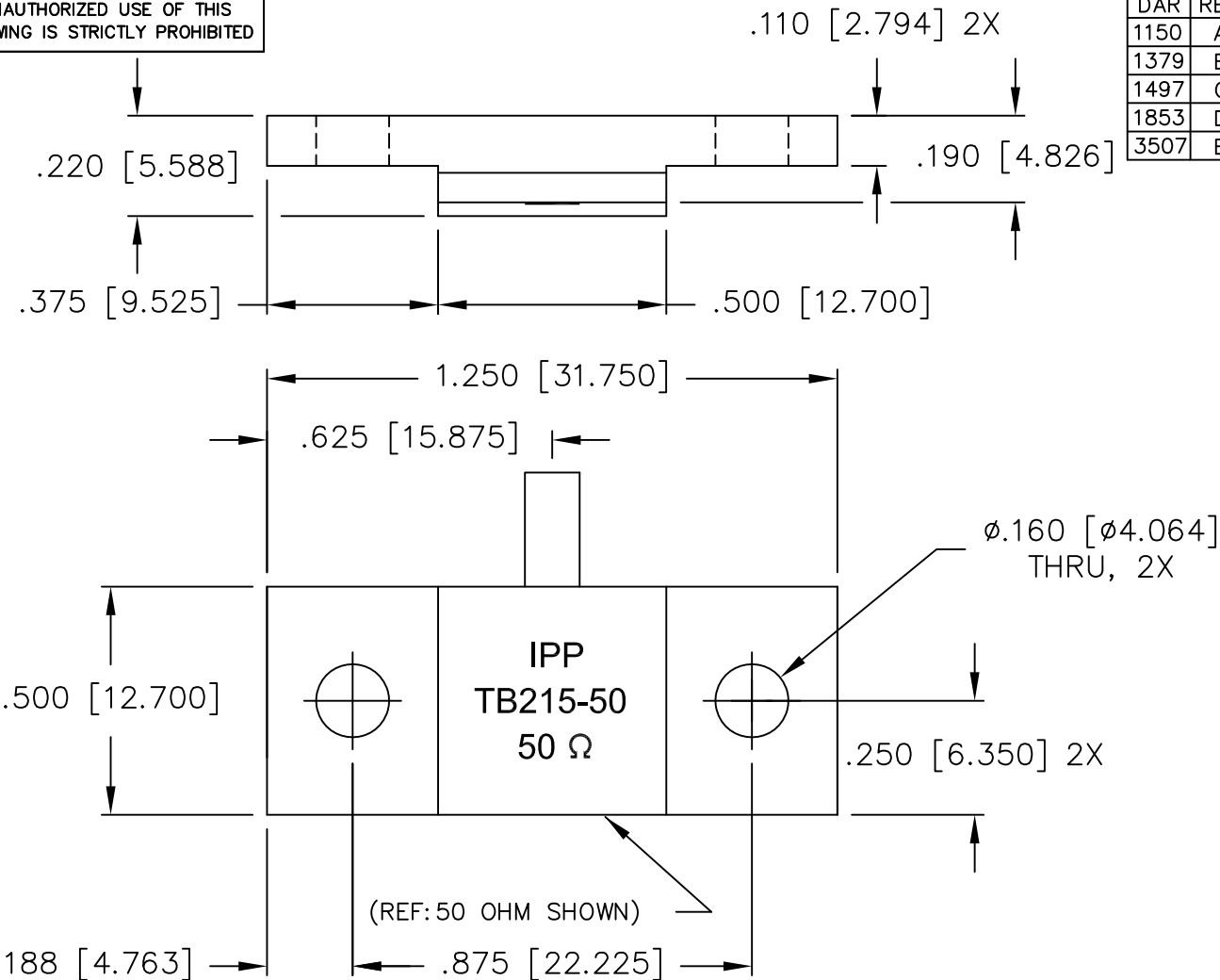


UNAUTHORIZED USE OF THIS  
DRAWING IS STRICTLY PROHIBITED



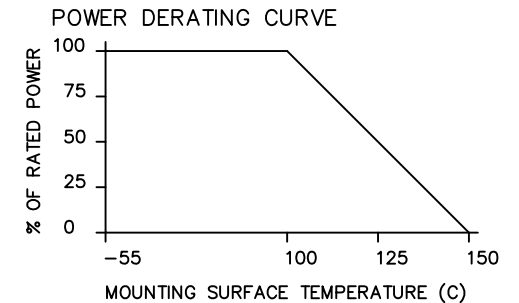
DAR	REV	DESCRIPTION	APPVD	DATE
1150	A	INITIAL RELEASE	TJD	7-06
1379	B	REMOVED LEAD	DG	12-07
1497	C	CHANGE LD HEIGHT & HEIGHT DIMS	DG	9-08
1853	D	SEE DAR	DG	5-09
3507	E	SEE DAR	DG	2-12

**NOTES**

- LEAD MATERIAL:  
99.99% PURE SILVER,  
.120 WIDE x .005 THICK
- LEAD LENGTH: .250 MIN.
- SUBSTRATE MATERIAL: BeO  
COVER MATERIAL: Al<sub>2</sub>O<sub>3</sub>
- FLANGE MATERIAL: COPPER  
PLATING: NICKEL
- LEAD(S) WELDED TO SUBSTRATE.
- RoHS COMPLIANT.

**ELECTRICAL SPECIFICATIONS**

INPUT POWER: 400 WATT  
 FREQ: DC - 1600 MHZ.  
 VSWR: <1.20:1 DC - 1000 MHZ.  
 VSWR: <1.25:1 DC - 1600 MHZ.



PART NO.	VALUE	TOLERANCE
IPP-TB215-50	50 OHMS	+/- 5%

MATERIAL	[3] [4]	DWN DG	DATE 7-06	
FINISH	[4]	ENG TJD	DATE 7-06	
TOLERANCE	.XX ±.02 [.50] IN [MM] .XXX ±.010 [.254]	MANUF TP	DATE 7-06	TITLE
		CAGE CODE: 437R2		TERMINATION, 400 WATT, FLANGE
		SHEET OF 1 1	SCALE 4:1	P/N
				IPP-TB215-XXX
				REV. E