

# DOUBLE-BALANCED MICROWAVE MIXER

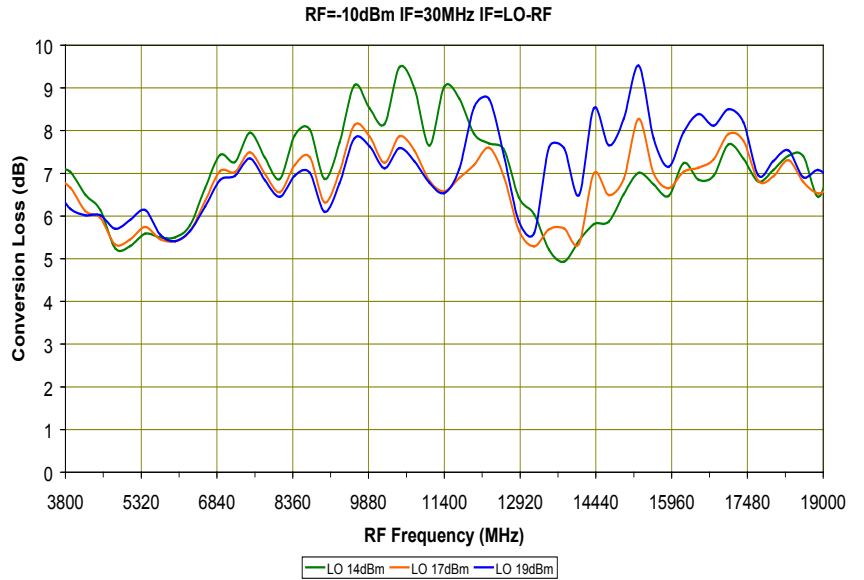
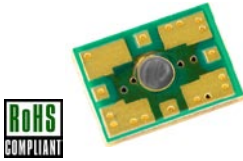
## SURFACE MOUNT MODEL: SGS-5-17

WIDE BANDWIDTH - GALAXY SERIES

3 - 19 GHz

**FEATURES:**

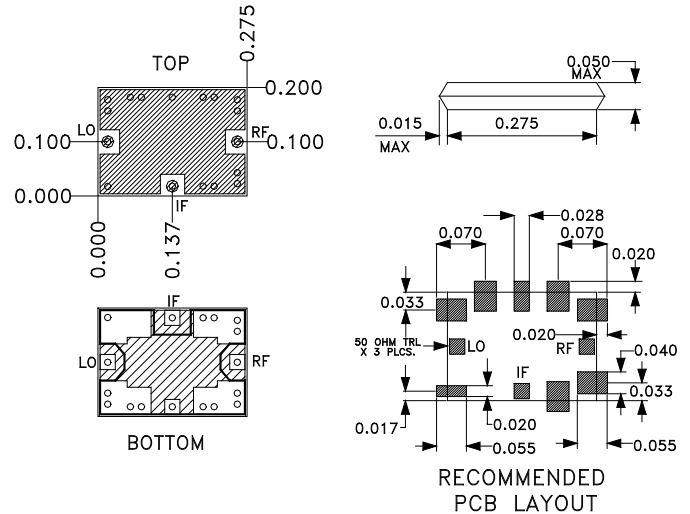
- ▶ Multi-Octave Bandwidth
- ▶ Schottky Diode Mixers
- ▶ Low Conversion Loss
- ▶ RoHS Compliant
- ▶ SYNSTRIP® Multi-Layer Technology



**SPECIFICATIONS (Rev. B 12/13/06)**

Frequency (GHz)	RF/LO	IF	
	3 - 19	DC - 4	
Conversion Loss (dB)	Typ.	Max.	
	7.5	11	
Isolation (dB)		Typ.	Min.
	LO/RF	25	15
	LO/IF	12	5
	RF/IF	20	7
LO Power	+17 dBm (Nom.)		
1 dB Compression Point	4 dBm (Typ.)		
Input IP <sup>3</sup>	+12.5 dBm (Typ.)		
RF Input Power	100 mW (Max.)		
Impedance	50 Ohms (Nom.)		
Operating Temperature Range	-40 to +85 °C		

Package # 332



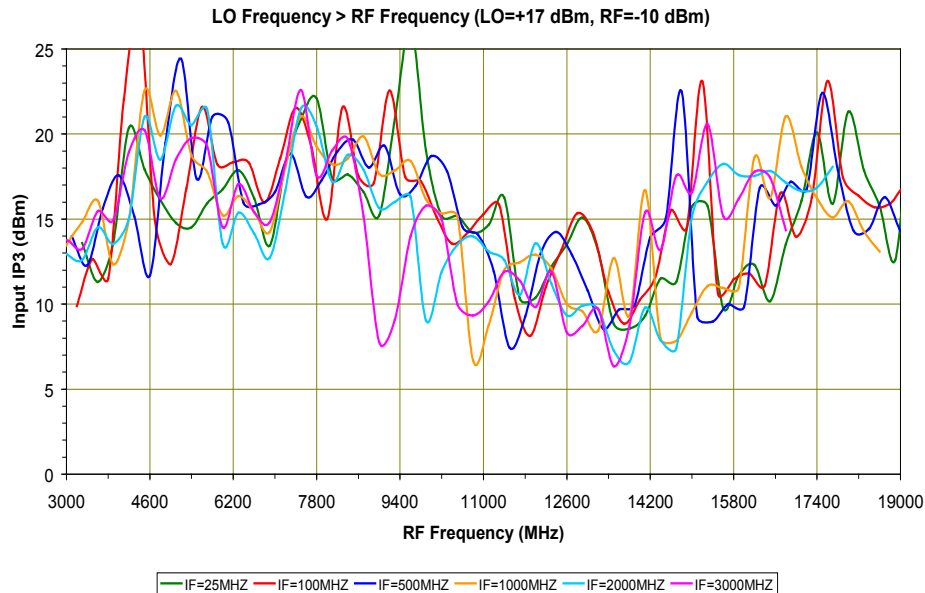
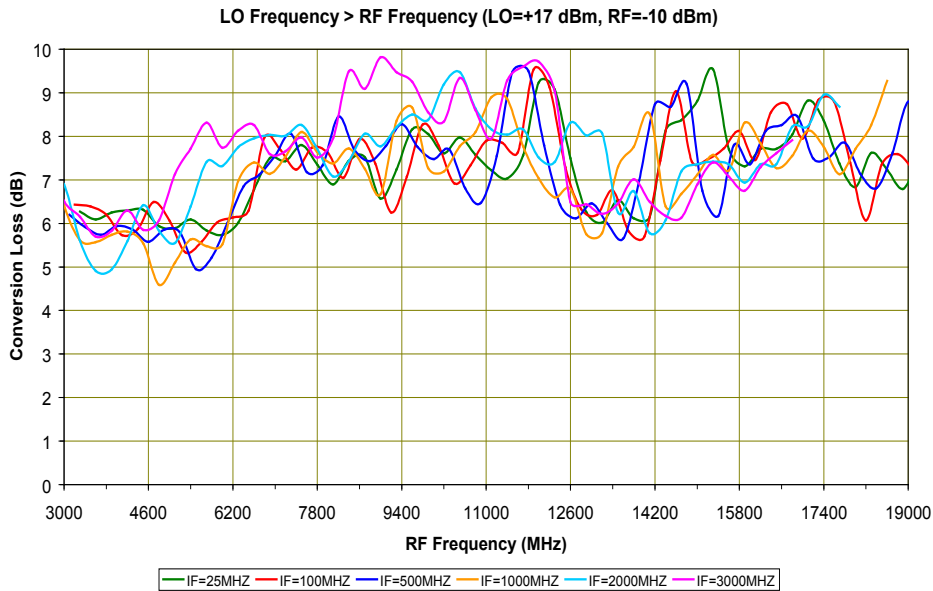
# DOUBLE-BALANCED MICROWAVE MIXER

## SURFACE MOUNT MODEL: SGS-5-17

WIDE BANDWIDTH - GALAXY SERIES

3 - 19 GHz

PERFORMANCE PLOTS



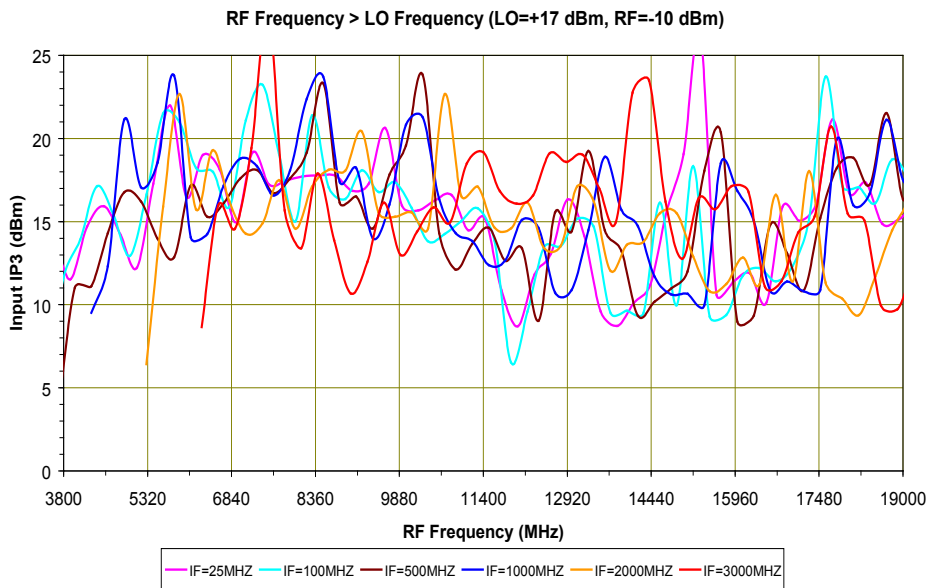
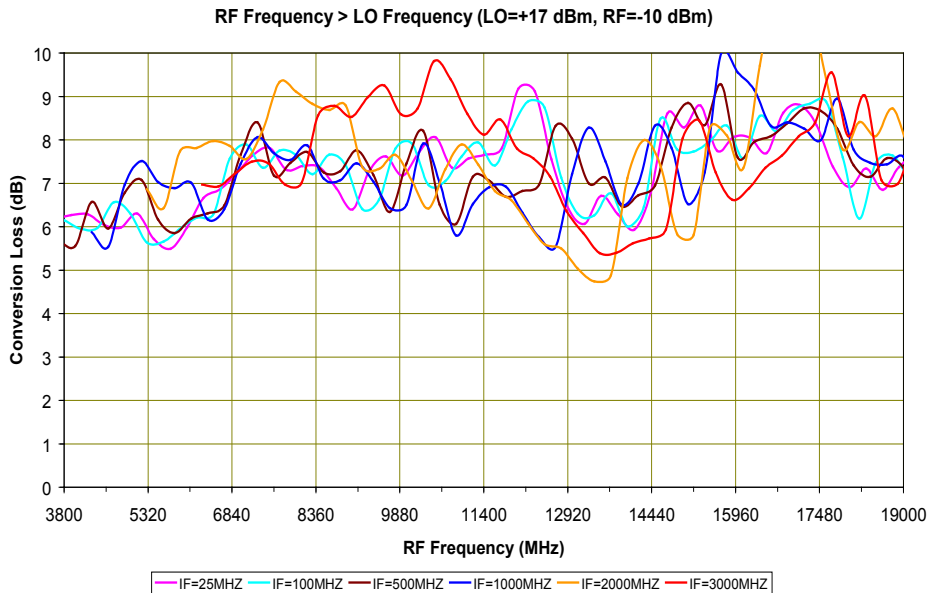
# DOUBLE-BALANCED MICROWAVE MIXER

## SURFACE MOUNT MODEL: SGS-5-17

WIDE BANDWIDTH - GALAXY SERIES

3 - 19 GHz

PERFORMANCE PLOTS



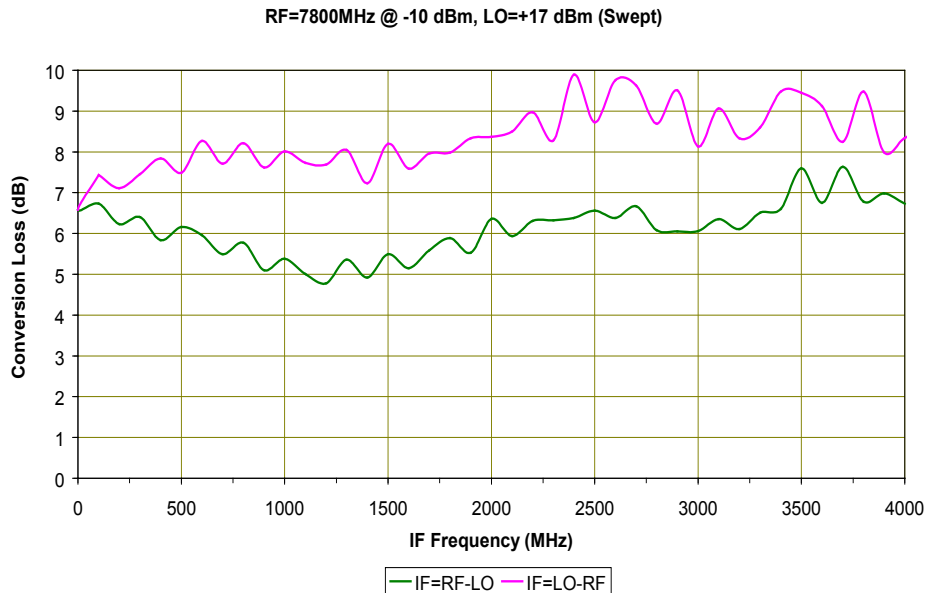
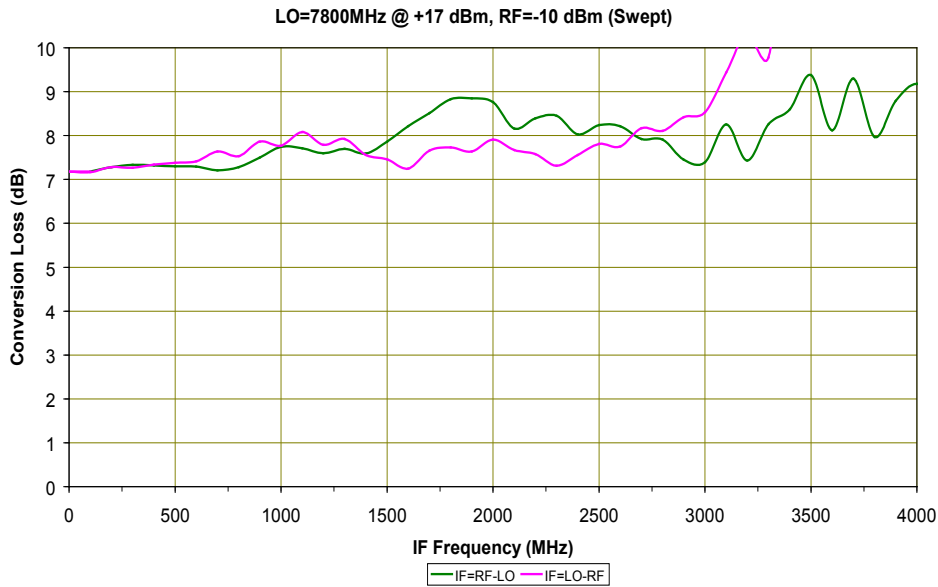
# DOUBLE-BALANCED MICROWAVE MIXER

## SURFACE MOUNT MODEL: SGS-5-17

WIDE BANDWIDTH - GALAXY SERIES

3 - 19 GHz

PERFORMANCE PLOTS



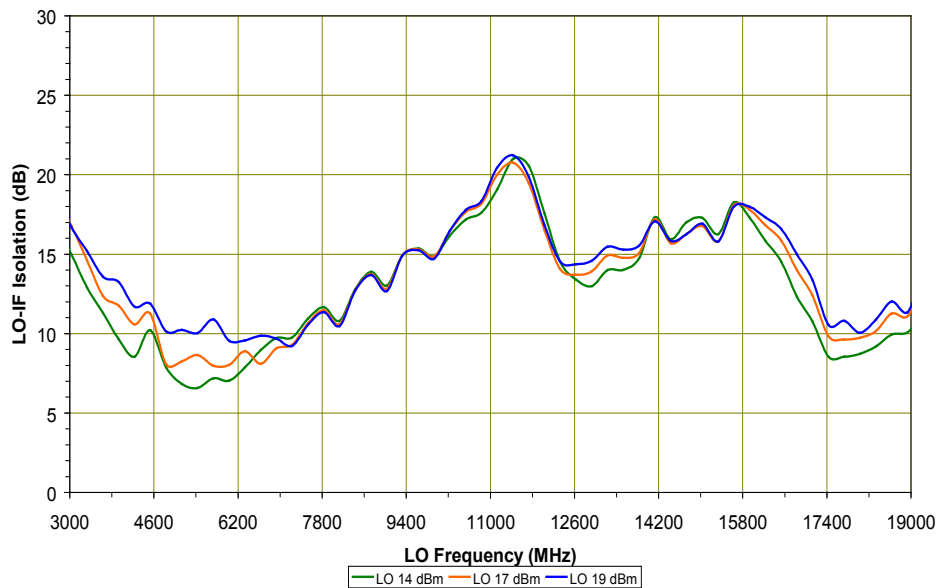
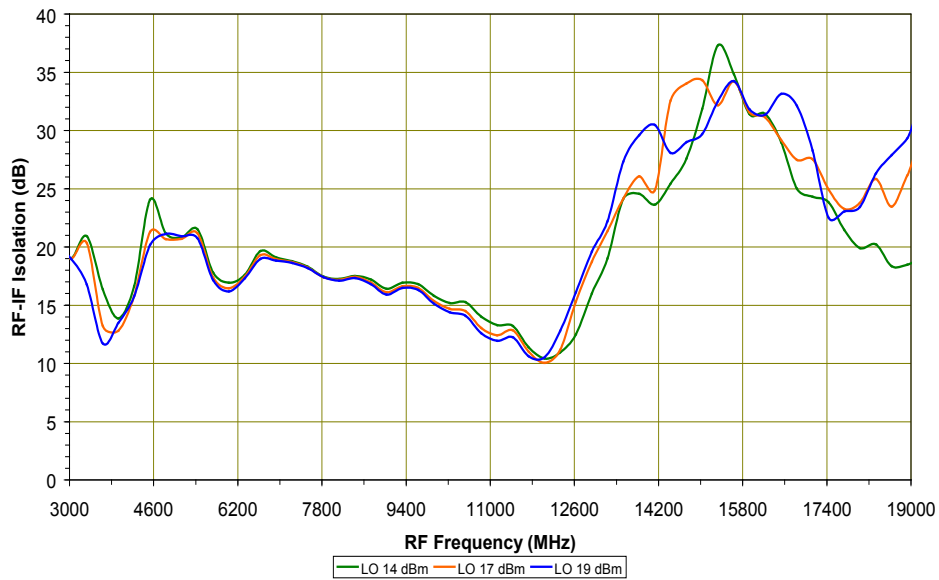
# DOUBLE-BALANCED MICROWAVE MIXER

## SURFACE MOUNT MODEL: SGS-5-17

WIDE BANDWIDTH - GALAXY SERIES

3 - 19 GHz

PERFORMANCE PLOTS

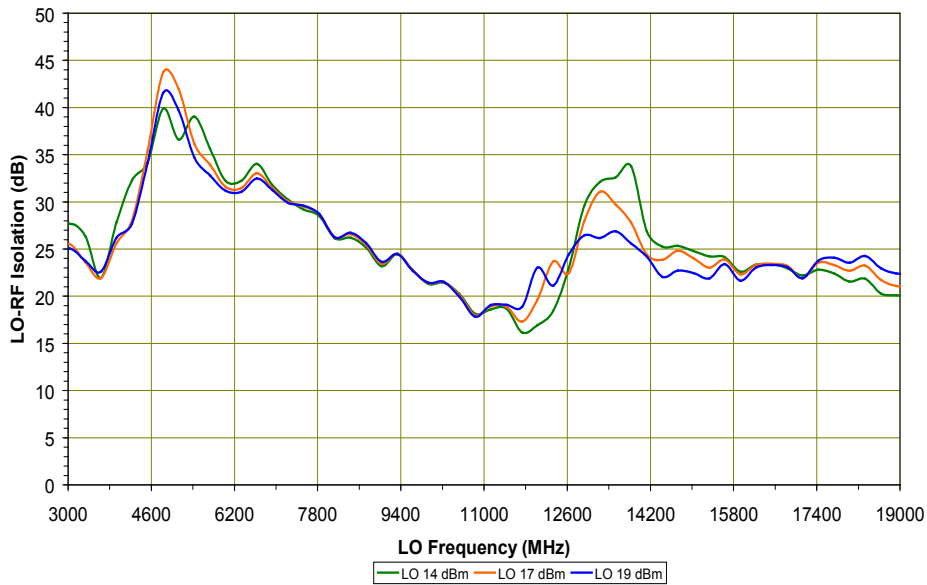


# DOUBLE-BALANCED MICROWAVE MIXER

## SURFACE MOUNT MODEL: SGS-5-17

WIDE BANDWIDTH - GALAXY SERIES

3 - 19 GHz



PERFORMANCE PLOTS



Copyright © 2006 Synergy Microwave Corporation

201 McLean Boulevard • Paterson, New Jersey 07504 • Tel: (973) 881-8800 • Fax: (973) 881-8361

E-Mail: [sales@synergymwave.com](mailto:sales@synergymwave.com) • World Wide Web: <http://www.synergymwave.com>