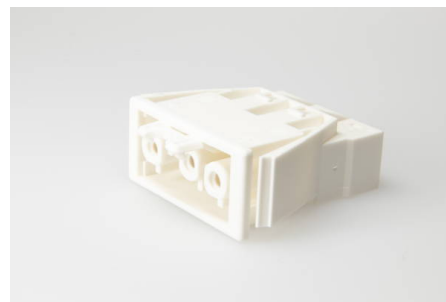




Connectors System AC 166® Panel Mounting

AC 166 GEBU/ 3 white with VSE

Socket, 3 pole, white, Coding: 1 (Mains), Wall Thickness min.: 0.5 mm, Wall Thickness max.: 1.2 mm, Voltage Rating: 250 V, Current Rating: 20 A, Cross-Section: 2.5 mm², Connection Type: screwless



Order Info

Reference Number (ref. no.)	168853V
Applications	Lighting, Installation, Electrical Appliances
PU	200
EAN	4028012111565

Type

Type	Socket
Number of poles	3 pole
Clamping Units per Pole	2
Colour	white
Coding	1 (Mains)
Cross-Section	2.5 mm ²
Connection Type	screwless
PE Function	yes
Protection Against Incorrect Plugging	yes
Latch	yes

Technical Data

Voltage Rating	250 V
Current Rating	20 A
Insulating Material	PA 6.6
Contact Material	Brass
Core Cross-Section min.	0.5 mm ²
Core Cross-Section max.	2.5 mm ²
Impulse Voltage Rating	4.0 kV
Flammability Rating	V-2
max. Ambient Temperature Operation	70 °C
IP Code	IP20
IP Code when Plugged	IP40
Type of Conductor Solid	yes
Assembly Contact Screw	0.5x3.0 / ⚙ 0.3 Nm

Wall Thickness min.	0.5 mm
Wall Thickness max.	1.2 mm
Approbation EN61535	AC166-G_Leitungen_EN61535_20121212_20180725_VDE_ENEC_4C
Approbation UL	160_163_AC164_AC166_20011003_20170727_UL_E220480_Sec.1-(
Approbation CSA	AC_160-163-166_166G_20080321_CSA_1997949_Certificate_web.p

Accessories

AC 166 VKH/ 3 white	169253
AC 166 VKH/ 3 black	169263
AC 166 VKE/ 3 white	169153
AC 166 VKE/ 3 black	169163
AC 166 VKH/ 3 white	169253
AC 166 VKH/ 3 black	169263
AC 166 VKE/ 3 white	169153
AC 166 VKE/ 3 black	169163
AC 166 VKH/ 3 white	169253
AC 166 VKH/ 3 black	169263
AC 166 VKE/ 3 white	169153
AC 166 VKE/ 3 black	169163
AC 166 VKH/ 3 white	169253
AC 166 VKH/ 3 black	169263
AC 166 VKE/ 3 white	169153
AC 166 VKE/ 3 black	169163
AC 166 VSF white	169553
AC 166 VSF black	169563
AC 166 VSE white	169453
AC 166 VSE black	169463
AC 166 VSL white	169554
AC 166 VSL black	169564
AC 166 VSF white	169553
AC 166 VSF black	169563
AC 166 GKU/ 3 white	167053
AC 166 GKU/ 3 black	167063
AC 166 GVT 3/ 3 black	167163
AC 166 GVT 3/ 3 white	167153