

# Customer Information Sheet

DRAWING No.: M22-19X00XX

SHEET 1 OF 2

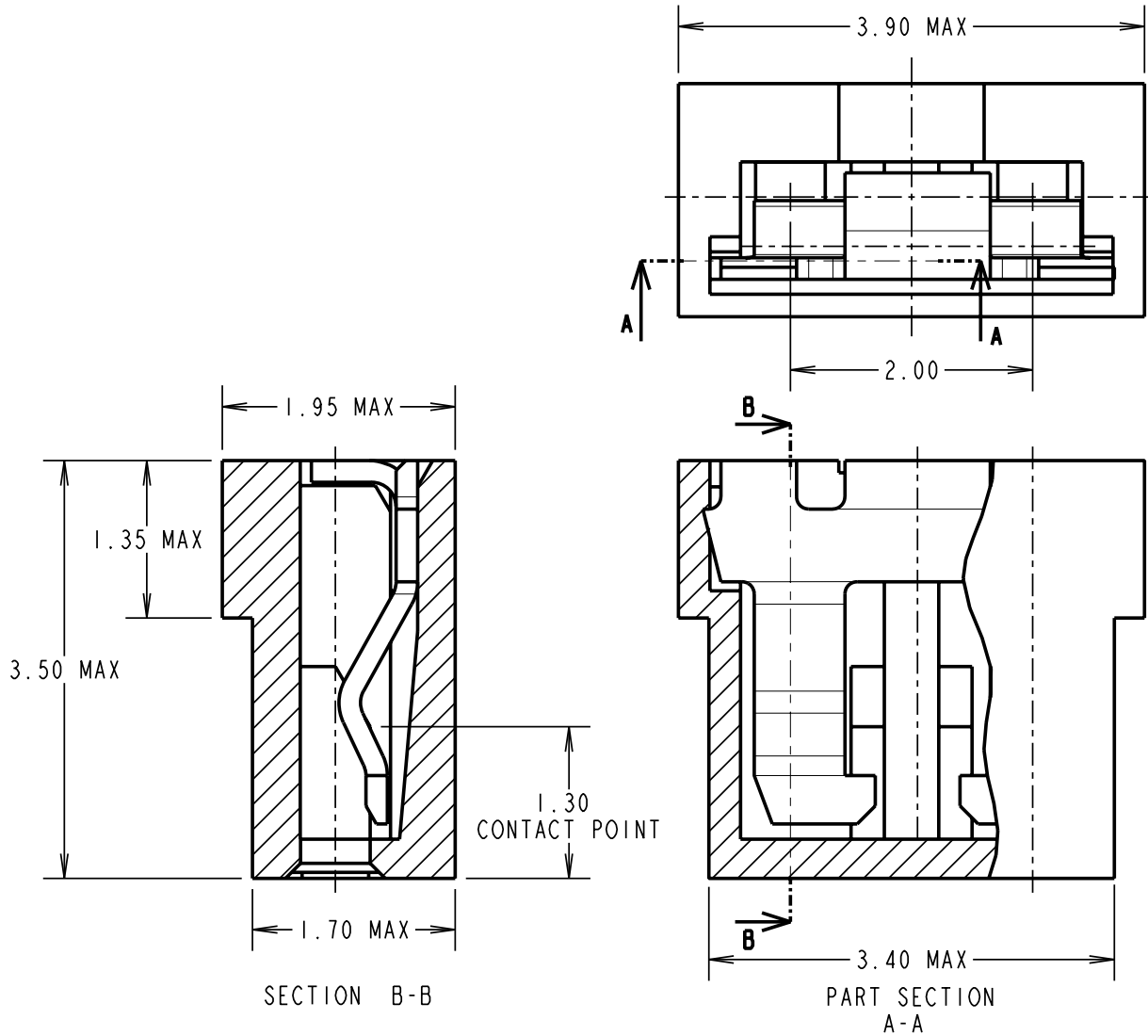
IF IN DOUBT - ASK

(C)

NOT TO SCALE

THIRD ANGLE PROJECTION

ALL DIMENSIONS IN mm



**SPECIFICATIONS:**

**MATERIALS:**

MOULDING = GLASS FILLED POLYESTER UL94V-0  
CONTACT = BERYLLIUM COPPER

**FINISH:**

**CONTACT:**

05 = 0.13µ GOLD ON CONTACT FACE OVER NICKEL  
46 = 3µ 100% TIN OVER NICKEL  
MOULDING COLOUR = SEE ORDER CODE

**ELECTRICAL:**

CURRENT RATING AT 25°C = 2A MAX  
WORKING VOLTAGE = 250V AC/DC  
VOLTAGE PROOF = 500V AC/DC @ 50Hz  
CONTACT RESISTANCE (MAXIMUM):

TIN/LEAD = 20MILLOHMS INITIAL  
25 MILLOHMS AFTER CONDITIONING  
GOLD = 15 MILLOHMS INITIAL  
20 MILLOHMS AFTER CONDITIONING

**INSULATION RESISTANCE (MINIMUM):**

INITIAL = 1000 MEGOHMS  
AFTER CONDITIONING = 1000 MEGAOHMS

**ENVIRONMENTAL:**

TEMPERATURE RANGE = -40°C TO +85°C

**MECHANICAL:**

**DURABILITY:**

TIN/LEAD = 50 OPERATIONS  
GOLD = 300 OPERATIONS  
INSERTION FORCE = 10N MAX  
WITHDRAWAL FORCE = IN MIN

FOR COMPLETE SPECIFICATION, SEE COMPONENT SPECIFICATION C013XX (LATEST ISSUE)

**ORDER CODE:**

**M22-19X00XX**

**MOULDING COLOUR**

- 0 = BLACK
- 1 = BLUE
- 2 = RED
- 3 = LIGHT GREY

**CONTACT FINISH**

- 05 = GOLD
- 46 = 100% TIN

RA	5	08.10.08	10154
NAME	ISS.	DATE	C/NOTE
APPROVED:		R. ADDE	
CHECKED:		M.G. PLESTED	
DRAWN:		W. J. BOURNE	
CUSTOMER REF.:			
ASSEMBLY DRG:			

**HARWIN**

HARWIN USA  
TEL: 603 893 5376  
FAX: 603 893 5396  
mis@harwin.com

HARWIN Europe (UK)  
TEL: 023 9231 4545  
FAX: 023 9231 4590  
mis@harwin.co.uk

HARWIN Asia  
TEL: +65 6 779 4909  
FAX: +65 6 779 3868  
mis@harwin.com.sg

THIS DRAWING AND ANY INFORMATION OR DESCRIPTIVE MATTER SET OUT HEREON ARE CONFIDENTIAL AND COPYRIGHT PROPERTY OF THE HARWIN GROUP AND MUST NOT BE DISCLOSED, LOANED, COPIED OR USED FOR MANUFACTURING, TENDERING OR FOR ANY OTHER PURPOSE WITHOUT THEIR WRITTEN PERMISSION.

**TOLERANCES**

- X. = ±1mm
- X.X = ±0.25mm
- X.XX = ±0.10mm
- X.XXX = ±0.01mm

ANGLES = ±5°

UNLESS STATED

**MATERIAL:**

FINISH:

S/AREA:

mm<sup>2</sup>

**TITLE:**

2mm PITCH JUMPER SOCKET ASSEMBLY (OPEN TOP)

DRAWING NUMBER:

**M22-19X00XX**

SHT  
1  
OF 2