

LM9076Q

LM9076Q 150mA Ultra-Low Quiescent Current LDO Regulator with Delayed Reset

Output



Literature Number: SNVS713A

LM9076Q

150mA Ultra-Low Quiescent Current LDO Regulator with Delayed Reset Output

General Description

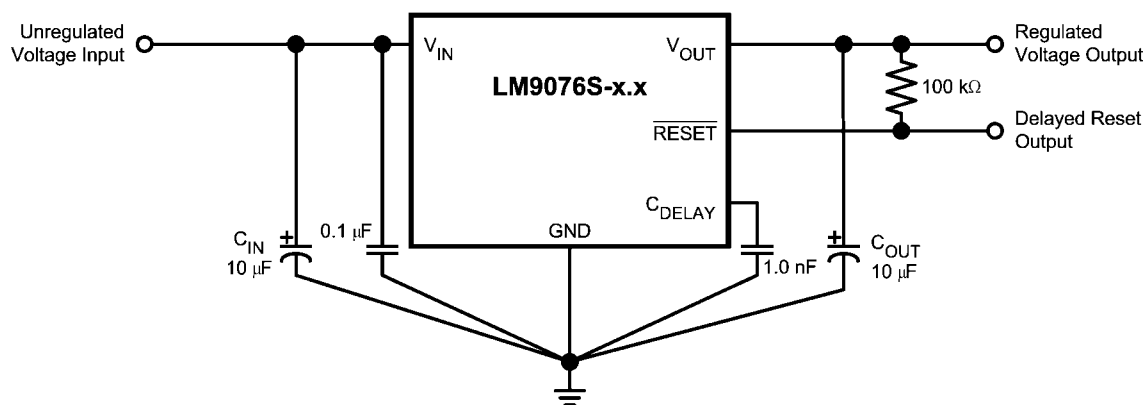
The LM9076Q is a $\pm 3\%$, 150 mA logic controlled voltage regulator. The regulator features an active low delayed reset output flag which can be used to reset a microprocessor system at turn-ON and in the event that the regulator output voltage falls below a minimum value. An external capacitor programs a delay time interval before the reset output pin can return high.

Designed for automotive and industrial applications, the LM9076Q contains a variety of protection features such as thermal shutdown, input transient protection and a wide operating temperature range. The LM9076Q uses an PNP pass transistor which allows low drop-out voltage operation.

Features

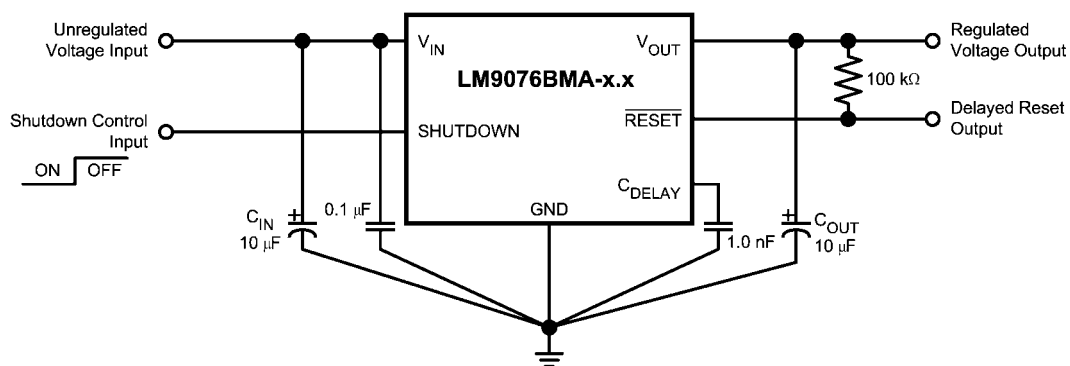
- AEC-Q100 Grade1 qualified (-40°C to $+125^{\circ}\text{C}$)
- Available with 5.0V or 3.3V output voltage
- Ultra Low Ground Pin Current, 25 μA typical for 100 μA load
- V_{OUT} initial accuracy of $\pm 1.5\%$
- V_{OUT} accurate to $\pm 3\%$ over Load and Temperature Conditions
- Low Dropout Voltage, 200 mV typical with 150 mA load
- Low Off State Ground Pin current for LM9076QBMA
- Delayed $\overline{\text{RESET}}$ output pin for low V_{OUT} detection
- +70V/-50V Voltage Transients
- Operational V_{IN} up to +40V

Typical Applications



LM9076QS-x.x in 5 lead TO-263 package

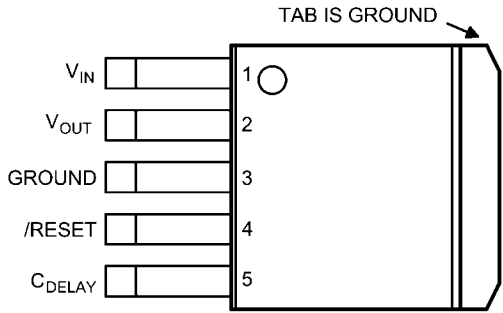
30154329



LM9076QBMA-x.x in 8 lead SO package

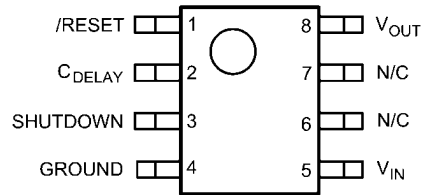
30154330

Connection Diagrams



Top View
Part Numbers LM9076QS-3.3 and LM9076QS-5.0
See NS TO-263 Package Number TS5B

30154327



Top View
Part Numbers LM9076QBMA-3.3 and LM9076QBMA-5.0
See NS SOIC Package Number M08A

30154328

Ordering Information

| Output Voltage | Package Type | Order Number | Package Marking | Shipped As | Feature |
|----------------|--------------|-----------------|-----------------|-----------------------|---|
| 3.3 | SO-8 | LM9076QBMA-3.3 | 9076BQMA3.3 | Rail of 95 | AEC-Q100 Grade 1 qualified. Automotive Grade Production Flow. * |
| | | LM9076QBMAX-3.3 | 9076BQMA3.3 | Tape and Reel of 2500 | |
| | TO-263-5 | LM9076QS-3.3 | LM9076QS3.3 | Rail of 45 | |
| | | LM9076QSX-3.3 | LM9076QS3.3 | Tape and /reel of 500 | |
| 5.0 | SO-8 | LM9076QBMA-5.0 | 9076BQMA5.0 | Rail of 95 | |
| | | LM9076QBMAX-5.0 | 9076BQMA5.0 | Tape and Reel of 2500 | |
| | TO-263-5 | LM9076QS-5.0 | LM9076QS5.0 | Rail of 45 | |
| | | LM9076QSX-5.0 | LM9076QS5.0 | Tape and Reel of 500 | |

Note: * Automotive grade (Q) product incorporates enhanced manufacturing and support processes for the automotive market, including defect detection methodologies. Reliability qualification is compliant with the requirements and temperature grades defined in the AEC-Q100 standard. Automotive grade products are identified with the letter Q. For more information go to <http://www.national.com/automotive>.

Absolute Maximum Ratings (Note 1)

| | |
|--|---------------------------|
| $V_{IN(DC)}$ | -15V to +55V |
| $V_{IN(+Transient)}$ $t < 10ms$, Duty Cycle $< 1\%$ | +70V |
| $V_{IN(-Transient)}$ $t < 1ms$, Duty Cycle $< 1\%$ | -50V |
| SHUTDOWN Pin | -15V to +52V |
| RESET Pin | -0.3V to 20V |
| C_{DELAY} Pin | -0.3V to $V_{OUT} + 0.3V$ |
| Storage Temperature | -65°C to +150°C |
| Junction Temperature (T_J) | +175°C |
| ESD, HBM, per AEC - Q100 - 002 | +/-2 kV |
| ESD, MM, per AEC - Q100 - 003 | +/-250V |

Operating Ratings (Note 1)

| | |
|----------------------------------|-------------------------|
| V_{IN} Pin | 5.35V to 40V |
| $V_{SHUTDOWN}$ Pin | 0V to 40V |
| Junction Temperature | -40°C $< T_J < +125$ °C |
| Thermal Resistance TS5B (Note 6) | |
| θ_{ja} | 75°C/W |
| θ_{jc} | 2.9°C/W |
| Thermal Resistance M08A (Note 6) | |
| θ_{ja} | 156°C/W |
| θ_{jc} | 59°C/W |

Electrical Characteristics for LM9076Q–3.3

The following specifications apply for $V_{IN} = 14V$; $I_{LOAD} = 10 mA$; $T_J = +25°C$; $C_{OUT} = 10 \mu F$, $0.5\Omega < ESR < 4.0\Omega$; unless otherwise specified. **Bold values indicate $-40°C \leq T_J \leq +125°C$.** (Note 5, Note 4) Minimum and Maximum limits are guaranteed through test, design or statistical correlation.

| Symbol | Parameter | Conditions | Min | Typ | Max | Units |
|--|--|--|--------------|-------------|--------------|---------|
| LM9076Q–3.3 REGULATOR CHARACTERISTICS | | | | | | |
| V_{OUT} | Output Voltage | | 3.251 | 3.30 | 3.349 | V |
| | | $-20°C \leq T_J \leq 85°C$ | 3.234 | 3.30 | 3.366 | V |
| | | $1 mA \leq I_{LOAD} \leq 150 mA$ | | | | |
| | | $1 mA \leq I_{LOAD} \leq 150 mA$ | 3.201 | 3.30 | 3.399 | V |
| | | $V_{IN} = 60V$, $R_{LOAD} = 1 k\Omega$, $t \leq 40ms$ | 2.970 | 3.30 | 3.630 | V |
| | Output Voltage Off LM9076Q BMA only | $V_{SHUTDOWN} \geq 2V$, $R_{LOAD} = 1 k\Omega$ | – | 0 | 250 | mV |
| | Reverse Battery | $V_{IN} = -15V$, $R_{LOAD} = 1 k\Omega$ | –300 | 0 | – | mV |
| ΔV_{OUT} | Line Regulation | $9.0V \leq V_{IN} \leq 16V$, $I_{LOAD} = 10 mA$ | – | 4 | 25 | mV |
| | | $16V \leq V_{IN} \leq 40V$, $I_{LOAD} = 10 mA$ | – | 17 | 35 | mV |
| | Load Regulation | $1 mA \leq I_{LOAD} \leq 150 mA$ | – | 42 | 60 | mV |
| V_{DO} | Dropout Voltage | $I_{LOAD} = 10 mA$ | – | 30 | 50 | mV |
| | | $I_{LOAD} = 50 mA$ | – | 80 | – | mV |
| | | $I_{LOAD} = 150 mA$ | – | 150 | 250 | mV |
| I_{GND} | Ground Pin Current | $9V \leq V_{IN} \leq 16V$, $I_{LOAD} = 100 \mu A$ | – | 25 | 45 | μA |
| | | $9V \leq V_{IN} \leq 40V$, $I_{LOAD} = 10 mA$ | – | 125 | 160 | μA |
| | | $9V \leq V_{IN} \leq 40V$, $I_{LOAD} = 50 mA$ | – | 0.6 | – | mA |
| | | $9V \leq V_{IN} \leq 16V$, $I_{LOAD} = 150 mA$ | – | 3.6 | 4.5 | mA |
| I_{SC} | V_{OUT} Short Circuit Current | $V_{IN} = 14V$, $R_{LOAD} = 1\Omega$ | 200 | 400 | 750 | mA |

| Symbol | Parameter | Conditions | Min | Typ | Max | Units |
|---|--|--|-----------------------|-----------------------|-----------|-------------------|
| PSRR | Ripple Rejection | $V_{IN} = (14V_{DC}) + (1V_{RMS})$ @ 120Hz $I_{LOAD} = 50 \text{ mA}$ | 50 | 60 | - | dB |
| RESET PIN CHARACTERISTICS | | | | | | |
| V_{OR} | Minimum V_{IN} for valid RESET Status | (Note 3) | - | 1.3 | 2.0 | V |
| V_{THR} | V_{OUT} Threshold for RESET Low | (Note 3) | 0.83 | 0.89 | 0.94 | X V_{OUT} (Nom) |
| V_{OH} | $\overline{\text{RESET}}$ pin high voltage | External pull-up resistor to $V_{OUT} = 100 \text{ k}\Omega$ | $V_{OUT} \times 0.90$ | $V_{OUT} \times 0.99$ | V_{OUT} | V |
| V_{OL} | $\overline{\text{RESET}}$ pin low voltage | $C_{DELAY} < 4.0V$, $I_{SINK} = 250 \mu A$ | - | 0.2 | 0.3 | V |
| C_{DELAY} PIN CHARACTERISTICS | | | | | | |
| I_{DELAY} | C_{DELAY} Charging Current | $V_{IN} = 14V$, $V_{DELAY} = 0V$ | -0.70 | -0.42 | -0.25 | μA |
| V_{OL} | C_{DELAY} pin low voltage | $V_{OUT} < 4.0V$, $I_{SINK} = I_{DELAY}$ | - | 0.100 | - | V |
| t_{DELAY} | Reset Delay Time | $V_{IN} = 14V$, $C_{DELAY} = 0.001 \mu F$ V_{OUT} rising from 0V, Δt from $V_{OUT} > V_{OR}$ to $\overline{\text{RESET}}$ pin HIGH | 4.7 | 7.8 | 13.2 | ms |

Electrical Characteristics for LM9076Q–5.0

The following specifications apply for $V_{IN} = 14V$; $V_{SHUTDOWN} = \text{Open}$; $I_{LOAD} = 10 \text{ mA}$; $T_J = +25^\circ\text{C}$; $C_{OUT} = 10 \mu\text{F}$, $0.5\Omega < \text{ESR} < 4.0\Omega$; unless otherwise specified. **Bold Values indicate $-40^\circ\text{C} \leq T_J \leq 125^\circ\text{C}$.** (Note 4), (Note 5) Minimum and Maximum limits are guaranteed through test, design, or statistical correlation.

| Symbol | Parameter | Conditions | Min | Typ | Max | Units |
|--|---|--|-----------------------|-----------------------|--------------|-------------------|
| LM9076Q–5.0 REGULATOR CHARACTERISTICS | | | | | | |
| V_{OUT} | Output Voltage | | 4.925 | 5.00 | 5.075 | V |
| | | $-20^\circ\text{C} \leq T_J \leq 85^\circ\text{C}$ $1 \text{ mA} \leq I_{LOAD} \leq 150 \text{ mA}$ | 4.900 | 5.00 | 5.100 | V |
| | | $1 \text{ mA} \leq I_{LOAD} \leq 150 \text{ mA}$ | 4.850 | 5.00 | 5.150 | V |
| | | $V_{IN} = 60V$, $R_{LOAD} = 1 \text{ k}\Omega$, $t \leq 40\text{ms}$ | 4.500 | 5.00 | 5.500 | V |
| | Output Voltage Off LM9076Q BMA only | $V_{SHUTDOWN} \geq 2V$, $R_{LOAD} = 1 \text{ k}\Omega$ | – | 0 | 250 | mV |
| Reverse Battery | $V_{IN} = -15V$, $R_{LOAD} = 1 \text{ k}\Omega$ | –300 | 0 | – | mV | |
| ΔV_{OUT} | Line Regulation | $9.0V \leq V_{IN} \leq 16V$, $I_{LOAD} = 10 \text{ mA}$ | – | 4 | 25 | mV |
| | | $16V \leq V_{IN} \leq 40V$, $I_{LOAD} = 10 \text{ mA}$ | – | 17 | 35 | mV |
| | Load Regulation | $1 \text{ mA} \leq I_{LOAD} \leq 150 \text{ mA}$ | – | 42 | 60 | mV |
| V_{DO} | Dropout Voltage | $I_{LOAD} = 10 \text{ mA}$ | – | 30 | 50 | mV |
| | | $I_{LOAD} = 50 \text{ mA}$ | – | 80 | – | mV |
| | | $I_{LOAD} = 150 \text{ mA}$ | – | 150 | 250 | mV |
| I_{GND} | Ground Pin Current | $9V \leq V_{IN} \leq 16V$, $I_{LOAD} = 100 \mu\text{A}$ | – | 25 | 45 | μA |
| | | $9V \leq V_{IN} \leq 40V$, $I_{LOAD} = 10 \text{ mA}$ | – | 125 | 160 | μA |
| | | $9V \leq V_{IN} \leq 40V$, $I_{LOAD} = 50 \text{ mA}$ | – | 0.6 | – | mA |
| | | $9V \leq V_{IN} \leq 16V$, $I_{LOAD} = 150 \text{ mA}$ | – | 3.6 | 4.5 | mA |
| | Ground Pin Current in Shutdown Mode | $9V \leq V_{IN} \leq 40V$, $V_{SHUTDOWN} = 2V$ | – | 15 | 25 | μA |
| I_{SC} | V_{OUT} Short Circuit Current | $V_{IN} = 14V$, $R_{LOAD} = 1\Omega$ | 200 | 400 | 750 | mA |
| PSRR | Ripple Rejection | $V_{IN} = (14V_{DC}) + (1V_{RMS} @ 120\text{Hz})$ $I_{LOAD} = 50 \text{ mA}$ | 50 | 60 | – | dB |
| RESET PIN CHARACTERISTICS | | | | | | |
| V_{OR} | Minimum V_{IN} for valid $\overline{\text{RESET}}$ Status | (Note 3) | – | 1.3 | 2.0 | V |
| V_{THR} | V_{OUT} Threshold for $\overline{\text{RESET}}$ Low | (Note 3) | 0.83 | 0.89 | 0.94 | $X V_{OUT}$ (Nom) |
| V_{OH} | $\overline{\text{RESET}}$ pin high voltage | External pull-up resistor to $V_{OUT} = 100 \text{ k}\Omega$ | $V_{OUT} \times 0.90$ | $V_{OUT} \times 0.99$ | V_{OUT} | V |
| V_{OL} | $\overline{\text{RESET}}$ pin low voltage | $C_{DELAY} < 4.0V$, $I_{SINK} = 250 \mu\text{A}$ | – | 0.2 | 0.3 | V |

| Symbol | Parameter | Conditions | Min | Typ | Max | Units |
|---|-------------------------------------|--|-------|-------|-------|-------|
| C_{DELAY} PIN CHARACTERISTICS | | | | | | |
| I _{DELAY} | C _{DELAY} Charging Current | V _{IN} = 14V, V _{DELAY} = 0V | -0.70 | -0.42 | -0.25 | uA |
| V _{OL} | C _{DELAY} pin low voltage | V _{OUT} < 4.0V, I _{SINK} = I _{DELAY} | - | 0.100 | - | V |
| t _{DELAY} | Reset Delay Time | V _{IN} = 14V, C _{DELAY} = 0.001 uF V _{OUT} rising from 0V, Δt from V _{OUT} > V _{OR} to RESET pin HIGH | 7.1 | 11.9 | 20.0 | ms |
| SHUTDOWN CONTROL LOGIC — LM9076QBMA-5.0 Only | | | | | | |
| V _{IL(SD)} | SHUTDOWN Pin Low Threshold Voltage | V _{SHUTDOWN} pin falling from 5.0V until V _{OUT} >4.5V (V _{OUT} = On) | 1 | 1.5 | - | V |
| V _{IH(SD)} | SHUTDOWN Pin High Threshold Voltage | V _{SHUTDOWN} pin rising from 0V until V _{OUT} < 0.5V (V _{OUT} = Off) | - | 1.5 | 2 | V |
| I _{IH(SD)} | SHUTDOWN Pin High Bias Current | V _{SHUTDOWN} = 40V | - | 35 | - | μA |
| | | V _{SHUTDOWN} = 5V | - | 15 | 35 | μA |
| | | V _{SHUTDOWN} = 2V | - | 6 | 10 | μA |
| I _{IL(SD)} | SHUTDOWN Pin Low Bias Current | V _{SHUTDOWN} = 0V | - | 0 | - | μA |

Note 1: Absolute Maximum Ratings indicate the limits beyond which the device may cease to function, and/or damage to the device may occur.

Note 2: Operating Ratings indicate conditions for which the device is intended to be functional, but does not guarantee specific performance limits. For guaranteed specifications and conditions refer to the Electrical Characteristics

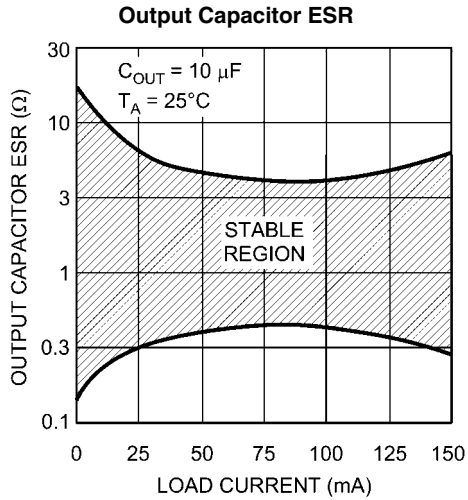
Note 3: Not Production tested, Guaranteed by Design. Minimum, Typical, and/or Maximum values are provided for informational purposes only.

Note 4: Pulse testing used maintain constant junction temperature (T_J).

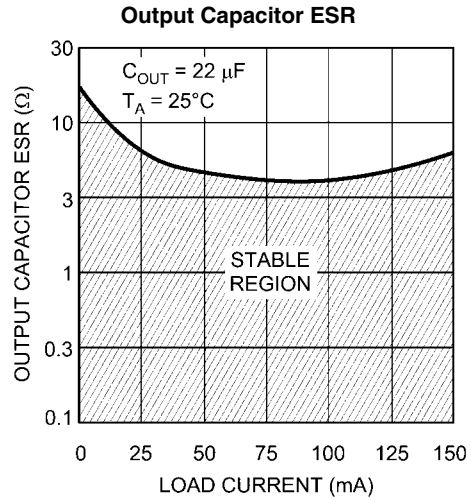
Note 5: The regulated output voltage specification is not guaranteed for the entire range of V_{IN} and output loads. Device operational range is limited by the maximum junction temperature (T_J). The junction temperature is influenced by the ambient temperature (T_A), package selection, input voltage (V_{IN}), and the output load current. When operating with maximum load currents the input voltage and/or ambient temperature will be limited. When operating with maximum input voltage the load current and/or the ambient temperature will be limited.

Note 6: Worst case (FREE AIR) per EIA/JESD51-3.

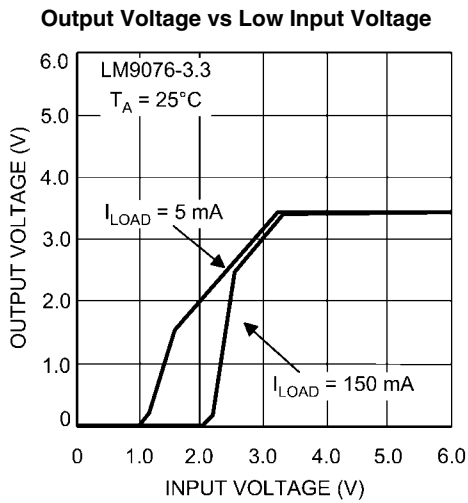
Typical Performance Characteristics



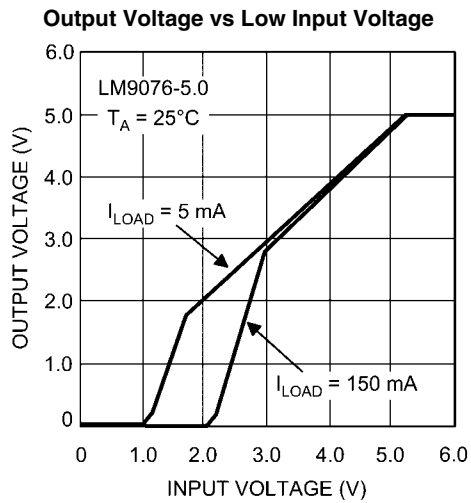
30154331



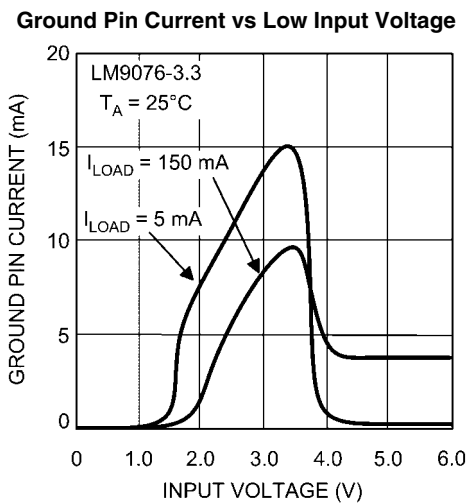
30154332



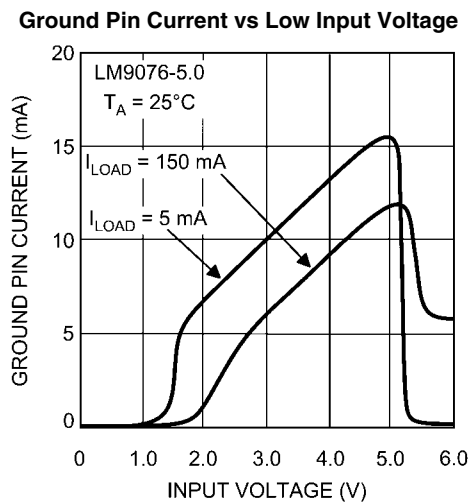
30154333



30154334

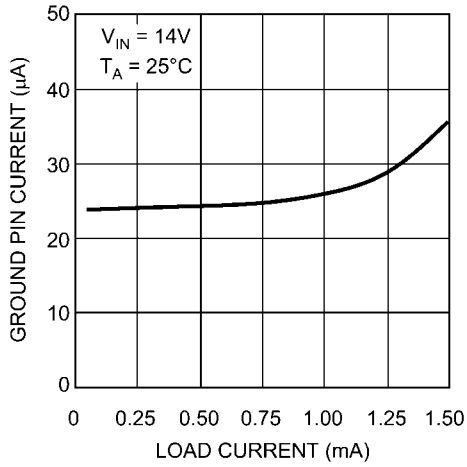


30154335



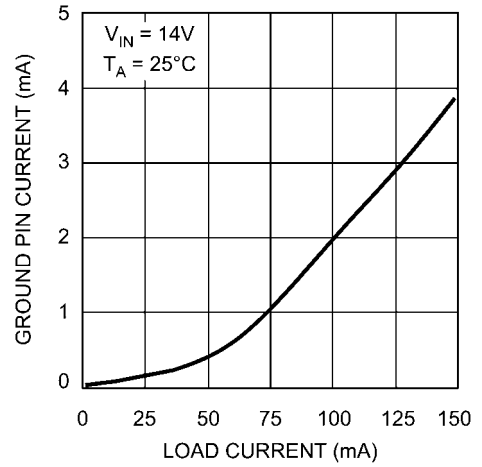
30154336

Ground Pin Current vs Load Current



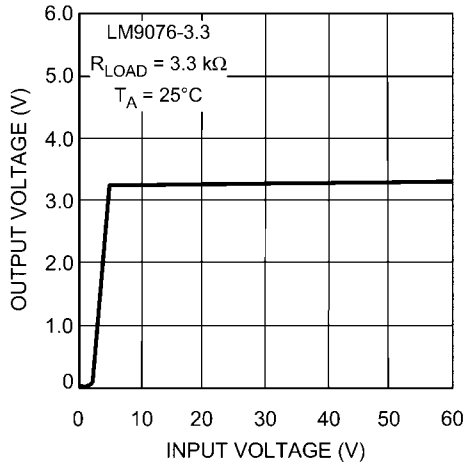
30154337

Ground Pin Current vs Load Current



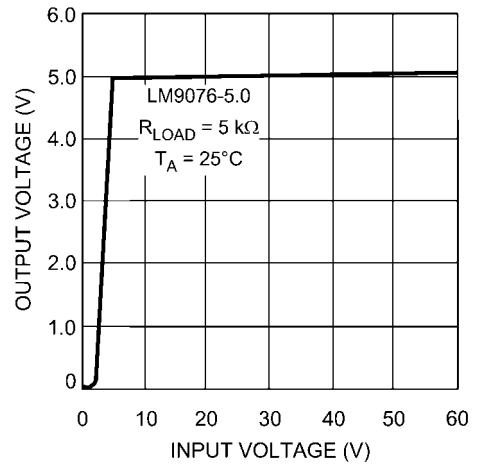
30154338

Output Voltage vs Input Voltage



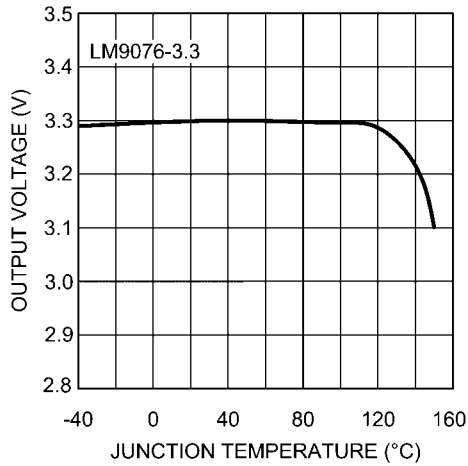
30154339

Output Voltage vs Input Voltage



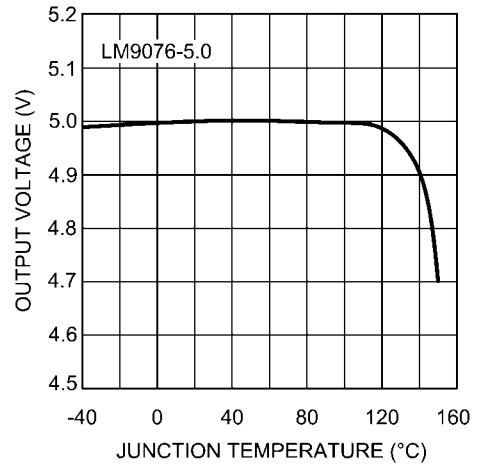
30154340

Output Voltage vs Junction Temperature

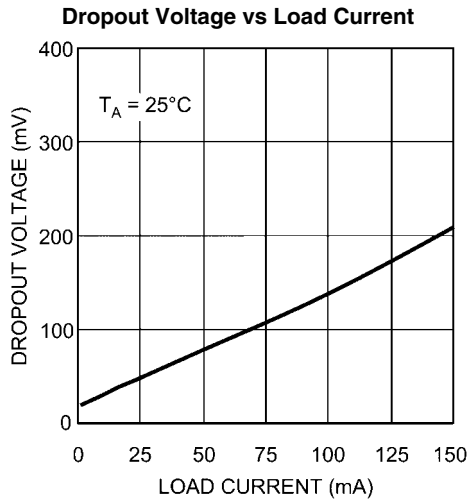


30154341

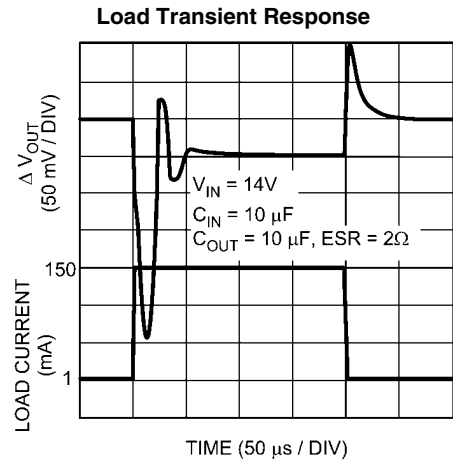
Output Voltage vs Junction Temperature



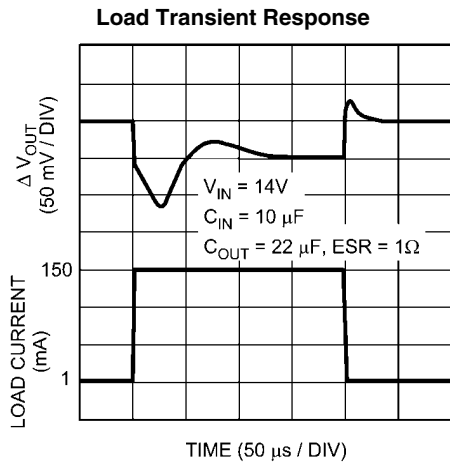
30154342



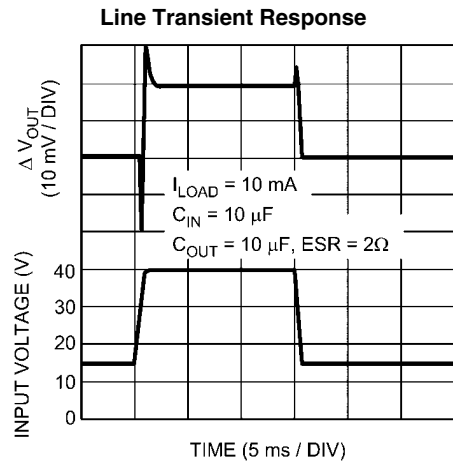
30154343



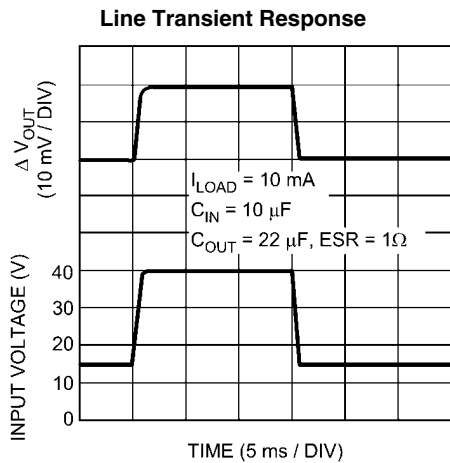
30154344



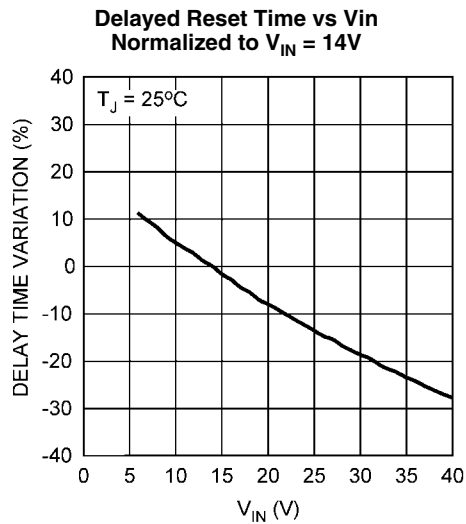
30154345



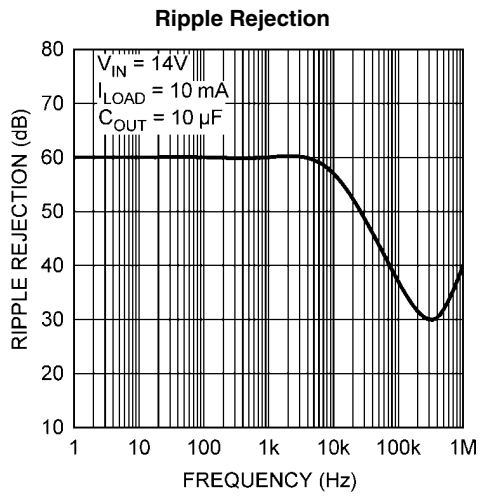
30154346



30154347



30154350



30154351

Application Information

REGULATOR BASICS

The LM9076Q regulator is suitable for Automotive and Industrial applications where continuous connection to a battery supply is required (refer to the Typical Application circuit).

The pass element of the regulator is a PNP device which requires an output bypass capacitor for stability. The minimum bypass capacitance for the output is 10 μF (refer to ESR limitations). A 22 μF , or larger, output bypass capacitor is recommended for typical applications

INPUT CAPACITOR

The LM9076Q requires a low source impedance to maintain regulator stability because critical portions of the internal bias circuitry are connected directly to V_{IN} . In general, a 10 μF electrolytic capacitor, located within two inches of the LM9076Q, is adequate for a majority of applications. Additionally, and at a minimum, a 0.1 μF ceramic capacitor should be located between the LM9076Q V_{IN} and Ground pin, and as close as is physically possible to the LM9076Q itself.

OUTPUT CAPACITOR

An output bypass capacitor is required for stability. This capacitance must be placed between the LM9076Q V_{OUT} pin and Ground pin, as close as is physically possible, using traces that are not part of the load current path.

The output capacitor must meet the requirements for minimum capacitance and also maintain the appropriate ESR value across the entire operating ambient temperature range. There is no limit to the maximum output capacitance as long as ESR is maintained.

The minimum bypass capacitance for the output is 10 μF (refer to ESR limitations). A 22 μF , or larger, output bypass capacitor is recommended for typical applications.

Solid tantalums capacitors are recommended as they generally maintain capacitance and ESR ratings over a wide temperature range. Ceramic capacitor types XR7 and XR5 may be used if a series resistor is added to simulate the minimum ESR requirement. See [Figure 1](#).

Aluminum electrolytic capacitors are not recommended as they are subject to wide changes in capacitance and ESR across temperature.

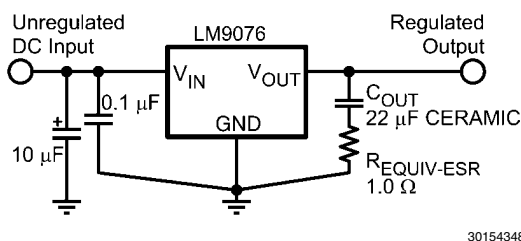


FIGURE 1. Using Low ESR Capacitors

DELAY CAPACITOR

The capacitor on the Delay pin must be a low leakage type since the charge current is minimal (420 nA typical) and the pin must fully charge to V_{OUT} . Ceramic, Mylar, and polystyrene capacitor types are generally recommended, although changes in capacitance values across temperature changes will have some effect on the delay timing.

Any leakage of the I_{DELAY} current, be it through the delay capacitor or any other path, will extend the delay time, possibly to the point that the Reset pin output does not go high.

SHUTDOWN PIN - LM9076QBMA ONLY

The basic On/Off control of the regulator is accomplished with the SHUTDOWN pin. By pulling the SHUTDOWN pin high the regulator output is switched Off. When the regulator is switched Off the load on the battery will be primarily due to the SHUTDOWN pin current.

When the SHUTDOWN pin is low, or left open, the regulator is switched On. When an unregulated supply, such as V_{BATTERY} , is used to pull the SHUTDOWN pin high a series resistor in the range of 10K Ω to 50K Ω is recommended to provide reverse voltage transient protection of the SHUTDOWN pin. Adding a small capacitor (0.001 μF typical) from the SHUTDOWN pin to Ground will add noise immunity to prevent accidental turn on due to noise on the supply line.

RESET FLAG

The $\overline{\text{RESET}}$ pin is an open collector output which requires an external pull-up resistor to develop the reset signal. The external pull-up resistor should be in the range of 10 k Ω to 200 k Ω .

At V_{IN} values of less than typically 2V the $\overline{\text{RESET}}$ pin voltage will be high. For V_{IN} values between typically 2V and approximately $V_{\text{OUT}} + V_{\text{BE}}$ the $\overline{\text{RESET}}$ pin voltage will be low. For V_{IN} values greater than approximately $V_{\text{OUT}} + V_{\text{BE}}$ the $\overline{\text{RESET}}$ pin voltage will be dependent on the status of the V_{OUT} pin voltage and the Delayed Reset circuitry. The value of V_{BE} is typically 600 mV at 25 $^{\circ}\text{C}$ and will decrease approximately 2 mV for every 1 $^{\circ}\text{C}$ increase in the junction temperature. During normal operation the $\overline{\text{RESET}}$ pin voltage will be high.

Any load condition that causes the V_{OUT} pin voltage to drop below typically 89% of normal will activate the Delayed Reset circuit and the $\overline{\text{RESET}}$ pin will go low for the duration of the delay time.

Any line condition that causes V_{IN} pin voltage to drop below typically $V_{\text{OUT}} + V_{\text{BE}}$ will cause the $\overline{\text{RESET}}$ pin to go low without activating the Delayed Reset circuitry.

Excessive thermal dissipation will raise the junction temperature and could activate the Thermal Shutdown circuitry which, in turn, will cause the $\overline{\text{RESET}}$ pin to go low.

For the LM9076QBMA devices, pulling the SHUTDOWN pin high will turn off the output which, in turn, will cause the $\overline{\text{RESET}}$ pin to go low once the V_{OUT} voltage has decayed to a value that is less than typically 89% of normal. See [Figure 2](#).

RESET DELAY TIME

When the regulator output is switched On, or after recovery from brief V_{OUT} fault condition, the $\overline{\text{RESET}}$ flag can be programmed to remain low for an additional delay time. This will give time for any system reference voltages, clock signals, etc., to stabilize before the micro-controller resumes normal operation.

This delay time is controlled by the capacitor value on the C_{DELAY} pin. During normal operation the C_{DELAY} capacitor is charged to near V_{OUT} . When a V_{OUT} fault causes the $\overline{\text{RESET}}$ pin to go low, the C_{DELAY} capacitor is quickly discharged to ground. When the V_{OUT} fault is removed, and V_{OUT} returns to the normal operating value, the C_{DELAY} capacitor begins charging at a typical constant 0.420 μA rate. When the voltage on the C_{DELAY} capacitor reaches the same potential as the V_{OUT} pin the $\overline{\text{RESET}}$ pin will be allowed to return high.

The typical $\overline{\text{RESET}}$ delay time can be calculated with the following formula:

$$t_{\text{DELAY}} = V_{\text{OUT}} \times (C_{\text{DELAY}} / I_{\text{DELAY}})$$

For the LM9076Q–3.3 with a C_{DELAY} value of 0.001 μF and a I_{DELAY} value of 0.420 μA the typical RESET delay time is:

$$t_{\text{DELAY}} = 3.3\text{V} \times (0.001 \mu\text{F} / 0.420 \mu\text{A}) = 7.8 \text{ ms}$$

For the LM9076Q–5.0 with a C_{DELAY} value of 0.001 μF and a I_{DELAY} value of 0.420 μA the typical RESET delay time is:

$$t_{\text{DELAY}} = 5.0\text{V} \times (0.001 \mu\text{F} / 0.420 \mu\text{A}) = 11.9 \text{ ms}$$

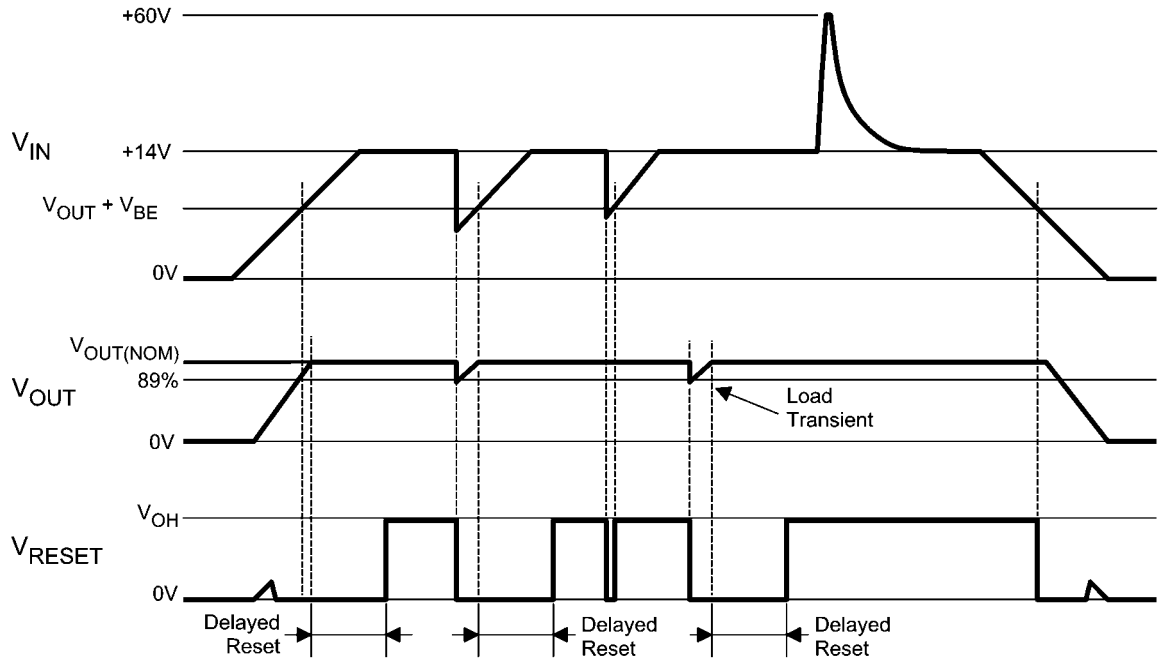
THERMAL PROTECTION

Device operational range is limited by the maximum junction temperature (T_J). The junction temperature is influenced by the ambient temperature (T_A), package selection, input volt-

age (V_{IN}), and the output load current. When operating with maximum load currents the input voltage and/or ambient temperature will be limited. When operating with maximum input voltage the load current and/or the ambient temperature will be limited.

Even though the LM9076Q is equipped with circuitry to protect itself from excessive thermal dissipation, it is not recommended that the LM9076Q be operated at, or near, the maximum recommended die junction temperature (T_J) as this may impair long term device reliability.

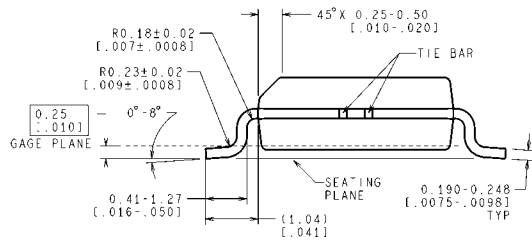
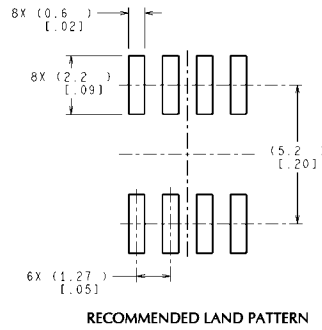
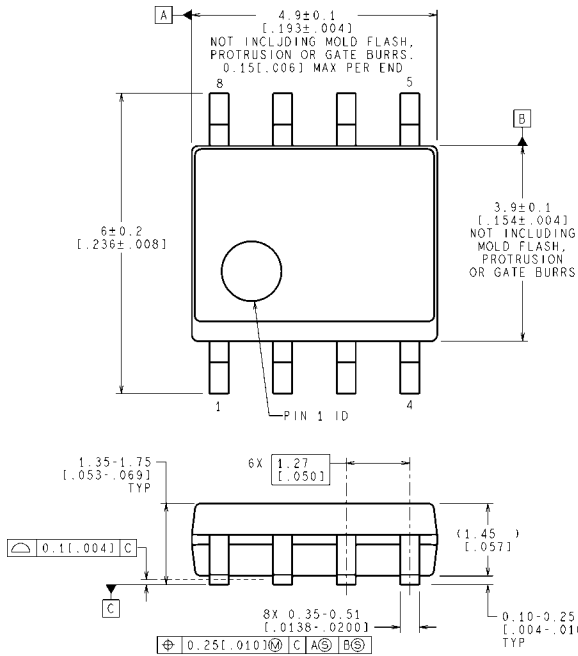
The thermal protection circuitry monitors the temperature at the die level. When the die temperature exceeds typically 160°C the voltage regulator output will be switched off.



30154349

FIGURE 2. Typical Reset Pin Operational Waveforms

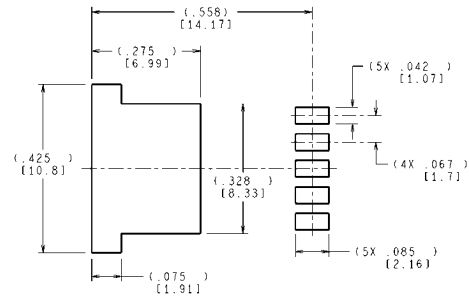
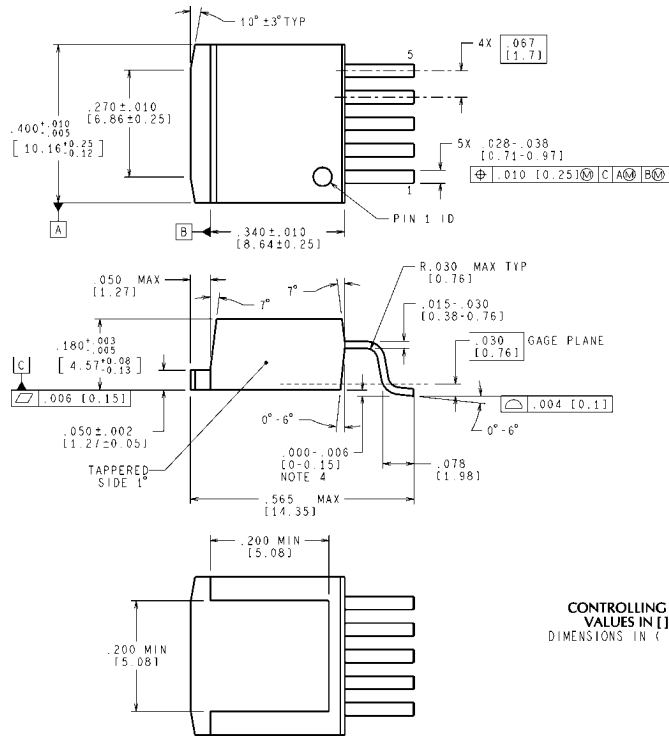
Physical Dimensions inches (millimeters) unless otherwise noted



CONTROLLING DIMENSION IS MILLIMETER
VALUES IN [] ARE INCHES
DIMENSIONS IN () FOR REFERENCE ONLY

M08A (Rev M)

**8-Lead (0.150" Wide) Molded SO Package
NS Package Number M08A**



CONTROLLING DIMENSION IS INCH
VALUES IN [] ARE MILLIMETERS
DIMENSIONS IN () FOR REFERENCE ONLY

TS5B (Rev D)

**5-Lead TO-263
NS Package Number TS5B**

Notes

TI/NATIONAL INTERIM IMPORTANT NOTICE

Texas Instruments has purchased National Semiconductor. As of Monday, September 26th, and until further notice, products sold or advertised under the National Semiconductor name or logo, and information, support and interactions concerning such products, remain subject to the preexisting National Semiconductor standard terms and conditions of sale, terms of use of website, and Notices (and/or terms previously agreed in writing with National Semiconductor, where applicable) and are not subject to any differing terms and notices applicable to other TI components, sales or websites. To the extent information on official TI and National websites and business social networking media, etc., pertains to both TI and National-branded products, both companies' instructions, warnings and limitations in the above-referenced terms of use apply.

Following are URLs where you can obtain information on other Texas Instruments products and application solutions:

| Products | | Applications | |
|-----------------------------|--|-----------------------------------|--|
| Audio | www.ti.com/audio | Communications and Telecom | www.ti.com/communications |
| Amplifiers | amplifier.ti.com | Computers and Peripherals | www.ti.com/computers |
| Data Converters | dataconverter.ti.com | Consumer Electronics | www.ti.com/consumer-apps |
| DLP® Products | www.dlp.com | Energy and Lighting | www.ti.com/energy |
| DSP | dsp.ti.com | Industrial | www.ti.com/industrial |
| Clocks and Timers | www.ti.com/clocks | Medical | www.ti.com/medical |
| Interface | interface.ti.com | Security | www.ti.com/security |
| Logic | logic.ti.com | Space, Avionics and Defense | www.ti.com/space-avionics-defense |
| Power Mgmt | power.ti.com | Transportation and Automotive | www.ti.com/automotive |
| Microcontrollers | microcontroller.ti.com | Video and Imaging | www.ti.com/video |
| RFID | www.ti-rfid.com | Wireless | www.ti.com/wireless-apps |
| RF/IF and ZigBee® Solutions | www.ti.com/lprf | TI E2E Community Home Page | e2e.ti.com |

Mailing Address: Texas Instruments, Post Office Box 655303, Dallas, Texas 75265

Copyright© 2011 Texas Instruments Incorporated

IMPORTANT NOTICE

Texas Instruments Incorporated and its subsidiaries (TI) reserve the right to make corrections, modifications, enhancements, improvements, and other changes to its products and services at any time and to discontinue any product or service without notice. Customers should obtain the latest relevant information before placing orders and should verify that such information is current and complete. All products are sold subject to TI's terms and conditions of sale supplied at the time of order acknowledgment.

TI warrants performance of its hardware products to the specifications applicable at the time of sale in accordance with TI's standard warranty. Testing and other quality control techniques are used to the extent TI deems necessary to support this warranty. Except where mandated by government requirements, testing of all parameters of each product is not necessarily performed.

TI assumes no liability for applications assistance or customer product design. Customers are responsible for their products and applications using TI components. To minimize the risks associated with customer products and applications, customers should provide adequate design and operating safeguards.

TI does not warrant or represent that any license, either express or implied, is granted under any TI patent right, copyright, mask work right, or other TI intellectual property right relating to any combination, machine, or process in which TI products or services are used. Information published by TI regarding third-party products or services does not constitute a license from TI to use such products or services or a warranty or endorsement thereof. Use of such information may require a license from a third party under the patents or other intellectual property of the third party, or a license from TI under the patents or other intellectual property of TI.

Reproduction of TI information in TI data books or data sheets is permissible only if reproduction is without alteration and is accompanied by all associated warranties, conditions, limitations, and notices. Reproduction of this information with alteration is an unfair and deceptive business practice. TI is not responsible or liable for such altered documentation. Information of third parties may be subject to additional restrictions.

Resale of TI products or services with statements different from or beyond the parameters stated by TI for that product or service voids all express and any implied warranties for the associated TI product or service and is an unfair and deceptive business practice. TI is not responsible or liable for any such statements.

TI products are not authorized for use in safety-critical applications (such as life support) where a failure of the TI product would reasonably be expected to cause severe personal injury or death, unless officers of the parties have executed an agreement specifically governing such use. Buyers represent that they have all necessary expertise in the safety and regulatory ramifications of their applications, and acknowledge and agree that they are solely responsible for all legal, regulatory and safety-related requirements concerning their products and any use of TI products in such safety-critical applications, notwithstanding any applications-related information or support that may be provided by TI. Further, Buyers must fully indemnify TI and its representatives against any damages arising out of the use of TI products in such safety-critical applications.

TI products are neither designed nor intended for use in military/aerospace applications or environments unless the TI products are specifically designated by TI as military-grade or "enhanced plastic." Only products designated by TI as military-grade meet military specifications. Buyers acknowledge and agree that any such use of TI products which TI has not designated as military-grade is solely at the Buyer's risk, and that they are solely responsible for compliance with all legal and regulatory requirements in connection with such use.

TI products are neither designed nor intended for use in automotive applications or environments unless the specific TI products are designated by TI as compliant with ISO/TS 16949 requirements. Buyers acknowledge and agree that, if they use any non-designated products in automotive applications, TI will not be responsible for any failure to meet such requirements.

Following are URLs where you can obtain information on other Texas Instruments products and application solutions:

Products

| | |
|------------------------|--|
| Audio | www.ti.com/audio |
| Amplifiers | amplifier.ti.com |
| Data Converters | dataconverter.ti.com |
| DLP® Products | www.dlp.com |
| DSP | dsp.ti.com |
| Clocks and Timers | www.ti.com/clocks |
| Interface | interface.ti.com |
| Logic | logic.ti.com |
| Power Mgmt | power.ti.com |
| Microcontrollers | microcontroller.ti.com |
| RFID | www.ti-rfid.com |
| OMAP Mobile Processors | www.ti.com/omap |
| Wireless Connectivity | www.ti.com/wirelessconnectivity |

Applications

| | |
|-------------------------------|--|
| Communications and Telecom | www.ti.com/communications |
| Computers and Peripherals | www.ti.com/computers |
| Consumer Electronics | www.ti.com/consumer-apps |
| Energy and Lighting | www.ti.com/energy |
| Industrial | www.ti.com/industrial |
| Medical | www.ti.com/medical |
| Security | www.ti.com/security |
| Space, Avionics and Defense | www.ti.com/space-avionics-defense |
| Transportation and Automotive | www.ti.com/automotive |
| Video and Imaging | www.ti.com/video |

TI E2E Community Home Page

e2e.ti.com

Mailing Address: Texas Instruments, Post Office Box 655303, Dallas, Texas 75265
Copyright © 2011, Texas Instruments Incorporated