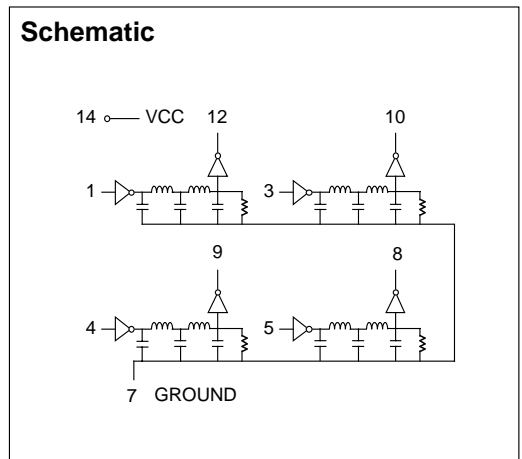


# 14 Pin DIP Quad TTL Compatible Active Delay Lines

DELAY TIME ±5% or ±2 nS†	PART NUMBER	DELAY TIME ±5% or ±2 nS†	PART NUMBER	DELAY TIME ±5% or ±2 nS†	PART NUMBER
5	EP9734-5	16	EP9734-16	35	EP9734-35
6	EP9734-6	17	EP9734-17	40	EP9734-40
7	EP9734-7	18	EP9734-18	45	EP9734-45
8	EP9734-8	19	EP9734-19	50	EP9734-50
9	EP9734-9	20	EP9734-20	55	EP9734-55
10	EP9734-10	21	EP9734-21	60	EP9734-60
11	EP9734-11	22	EP9734-22	65	EP9734-65
12	EP9734-12	23	EP9734-23	70	EP9734-70
13	EP9734-13	24	EP9734-24	75	EP9734-75
14	EP9734-14	25	EP9734-25		
15	EP9734-15	30	EP9734-30		

†Whichever is greater. Delay times referenced from input to leading edges at 25°C, 5.0V, with no load.

DC Electrical Characteristics		Test Conditions	Min	Max	Unit
Parameter					
V <sub>OH</sub>	High-Level Output Voltage	V <sub>CC</sub> = min. V <sub>IL</sub> = max. I <sub>OH</sub> = max	2.7		V
V <sub>OL</sub>	Low-Level Output Voltage	V <sub>CC</sub> = min. V <sub>IH</sub> = min. I <sub>OL</sub> = max		0.5	V
V <sub>IK</sub>	Input Clamp Voltage	V <sub>CC</sub> = min. I <sub>I</sub> = I <sub>IK</sub>		-1.2V	V
I <sub>IH</sub>	High-Level Input Current	V <sub>CC</sub> = max. V <sub>IN</sub> = 2.7V		50	µA
		V <sub>CC</sub> = max. V <sub>IN</sub> = 5.25V		1.0	mA
I <sub>IL</sub>	Low-Level Input Current	V <sub>CC</sub> = max. V <sub>IN</sub> = 0.5V		-2	mA
I <sub>OS</sub>	Short Circuit Output Current	V <sub>CC</sub> = max. V <sub>OUT</sub> = 0. (One output at a time)	-40	-100	mA
I <sub>CCH</sub>	High-Level Supply Current	V <sub>CC</sub> = max. V <sub>IN</sub> = OPEN		150	mA
I <sub>CCL</sub>	Low-Level Supply Current	V <sub>CC</sub> = max. V <sub>IN</sub> = 0		150	mA
T <sub>RO</sub>	Output Rise Time			4	nS
N <sub>H</sub>	Fanout High-Level Output	V <sub>CC</sub> = max. V <sub>OH</sub> = 2.7V		20 TTL LOAD	
N <sub>L</sub>	Fanout Low-Level Output	V <sub>CC</sub> = max. V <sub>OL</sub> = 0.5V		10 TTL LOAD	



Recommended Operating Conditions		Min	Max	Unit
V <sub>CC</sub>	Supply Voltage	4.75	5.25	V
V <sub>IH</sub>	High-Level Input Voltage	2.0		V
V <sub>IL</sub>	Low-Level Input Voltage		0.8	V
I <sub>IK</sub>	Input Clamp Current		-18	mA
I <sub>OH</sub>	High-Level Output Current		-1.0	mA
I <sub>OL</sub>	Low-Level Output Current		20	mA
PW*	Pulse Width of Total Delay	40		%
d*	Duty Cycle		40	%
T <sub>A</sub>	Operating Free-Air Temperature	0	+70	°C

\*These two values are inter-dependent.

Input Pulse Test Conditions @ 25° C		Unit
E <sub>IN</sub>	Pulse Input Voltage	3.2 Volts
PW	Pulse Width % of Total Delay	110 %
T <sub>RI</sub>	Pulse Rise Time (0.75 - 2.4 Volts)	2.0 nS
PRR	Pulse Repetition Rate @ T <sub>d</sub> ≤ 200 nS	1.0 MHz
	Pulse Repetition Rate @ T <sub>d</sub> > 200 nS	100 KHz
V <sub>CC</sub>	Supply Voltage	5.0 Volts

