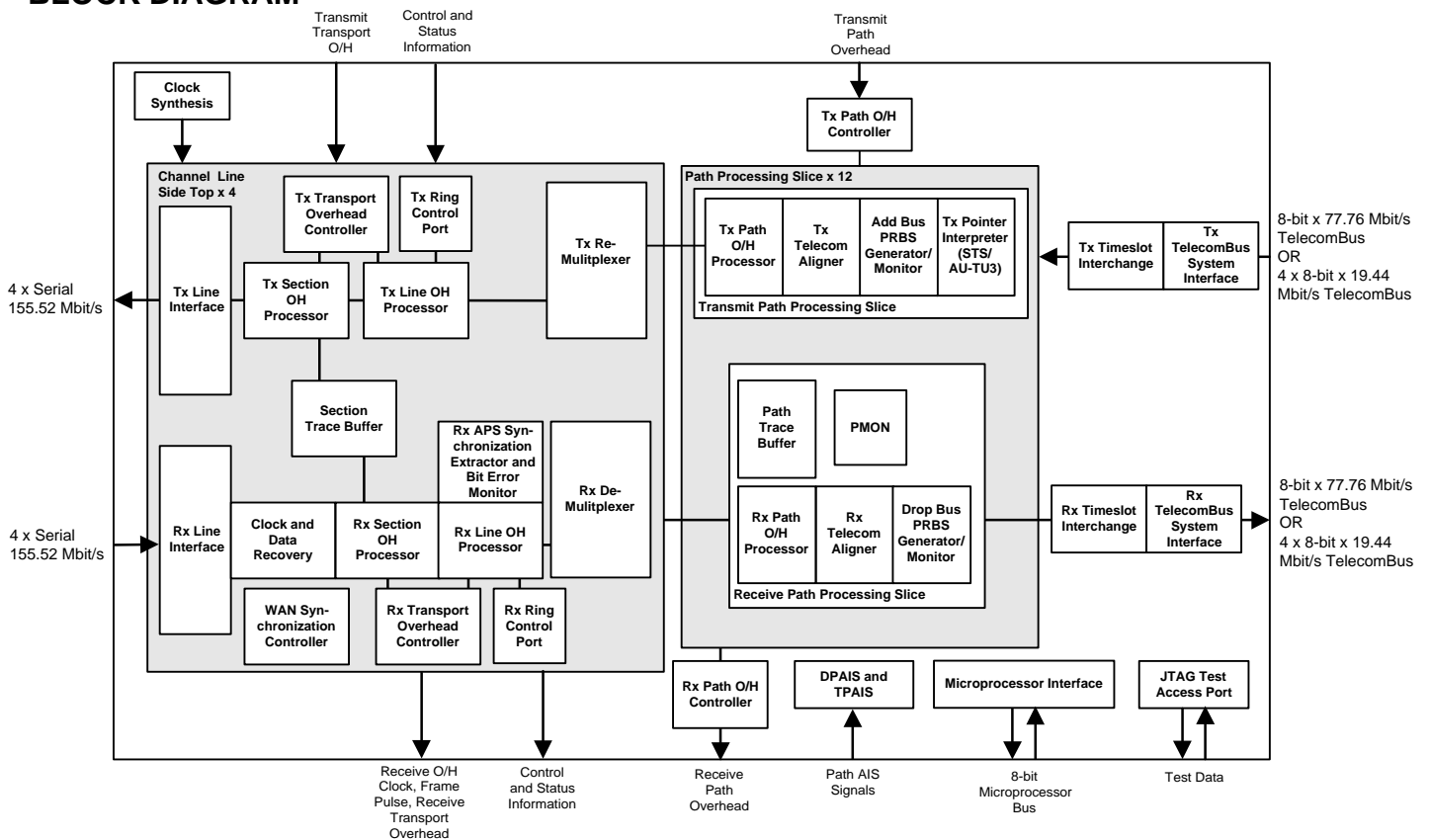


**Quad Channel 155 Mbit/s SONET/SDH Framer and Aligner**

**FEATURES**

- Monolithic four channel SONET/SDH Payload Extractor/Aligner for use in STS-3 (STM-1/AU-3) or STS-3c (STM-1/AU-4) interface applications, operating at serial interface speeds of 155.52 Mbit/s.
- Provides integrated clock recovery and clock synthesis to allow direct interface to optical modules.
- Each channel provides termination for SONET Section and Line, SDH Regenerator Section and Multiplexer Section transport overhead, and path overhead of three STS-1 (STM-0/AU-3) paths or a single STS-3c (STM-1/AU-4) path.
- Each channel maps three STS-1 (STM-0/AU-3) payloads or a single STS-3c (STM-1/AU-4) payload to system timing reference, accommodating plesiosynchronous timing offsets between the references through pointer processing.
- The entire SONET/SDH transport and path overheads are extracted to and inserted from dedicated pins.
- Frames to the SONET/SDH receive stream and inserts framing bytes and STS identification into the transmit stream and processes or inserts the transport overhead.
- Interprets or generates the STS (AU) pointer bytes (H1, H2, H3), extracts or inserts the synchronous payload envelope(s) and processes or inserts the path overhead.
- Supports Automatic Protection Switching (APS):
  - Ring control port communication of path REI and path RDI alarms;
  - Filters the APS channel (K1,K2) bytes into internal registers; inserts the APS channel into the transmit stream.
- Provides Time Slot Interchange (TSI) function at the ADD and DROP TelecomBus Interfaces for grooming twelve STS-1 (STM-0/AU-3) paths.
- Supports line loopback from the line side receive stream to the transmit stream and diagnostic loopback from an ADD TelecomBus interface to a DROP TelecomBus interface.
- Provides a standard five signal P1149.1 JTAG test port for boundary scan board test purposes.
- Provides a generic 8-bit microprocessor bus interface for configuration, control, and status monitoring.
- Low power 3.3 V CMOS with TTL compatible digital inputs and CMOS/TTL digital outputs.
- Industrial temperature range (-40°C to +85°C).
- 520 pin Super BGA package.
- Supports clock recovery bypass for use in applications where external clock recovery is desired.
- Complies with Bellcore GR-253-CORE jitter tolerance, jitter transfer, and intrinsic jitter criteria.

**BLOCK DIAGRAM**



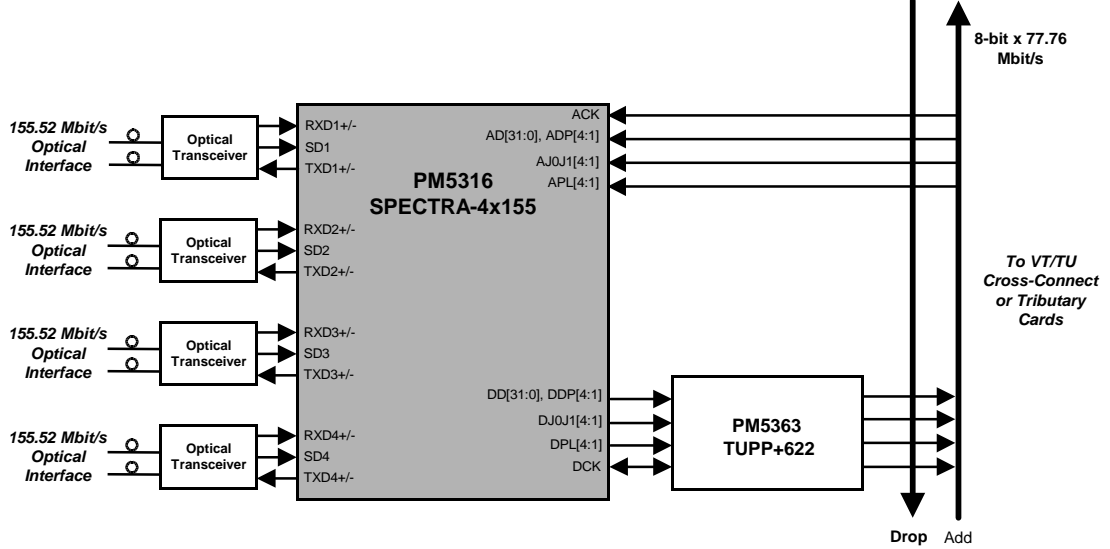
Quad Channel 155 Mbit/s SONET/SDH Framer and Aligner

APPLICATIONS

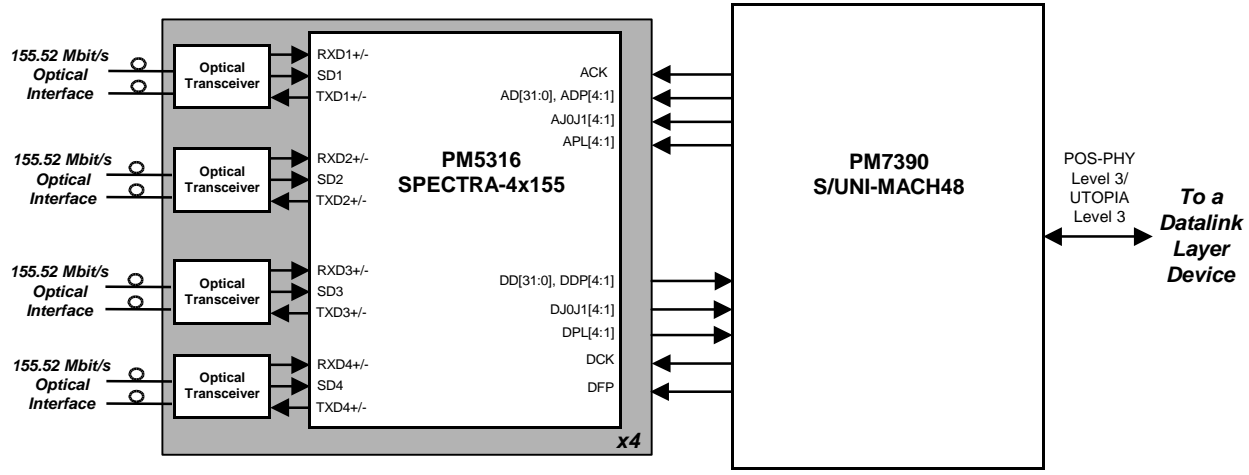
- Channelized STS-3/STM-1 Interfaces for:
  - Optical Cross Connects;
  - Digital Cross Connects;
  - Router and Switch Line Cards;
  - ADM Aggregate Cards for TDM and Multi-service applications;
  - Terminal Multiplexers.

TYPICAL APPLICATIONS

STS-3/STM-0 APPLICATION WITH VT/TU POINTER PROCESSING/ALIGNMENT



16 X STS-3/STM-0 APPLICATION WITH POS/ATM PROCESSING



Head Office:  
 PMC-Sierra, Inc.  
 #105 - 8555 Baxter Place  
 Burnaby, B.C. V5A 4V7  
 Canada  
 Tel: 604.415.6000  
 Fax: 604.415.6200

To order documentation,  
 send email to:  
 document@pmc-sierra.com  
 or contact the head office,  
 Attn: Document Coordinator

All product documentation is available  
 on our web site at:  
 http://www.pmc-sierra.com  
 For corporate information,  
 send email to:  
 info@pmc-sierra.com

PMC-2000327 (R2)  
 © Copyright PMC-Sierra,  
 Inc. 2001. SPECTRA is a  
 trademark of PMC-Sierra,  
 Inc. All rights reserved.