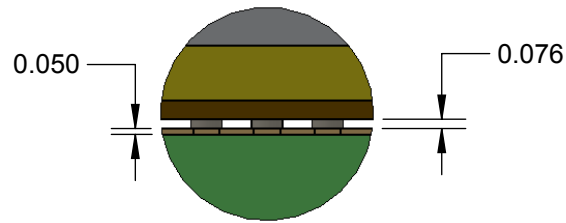
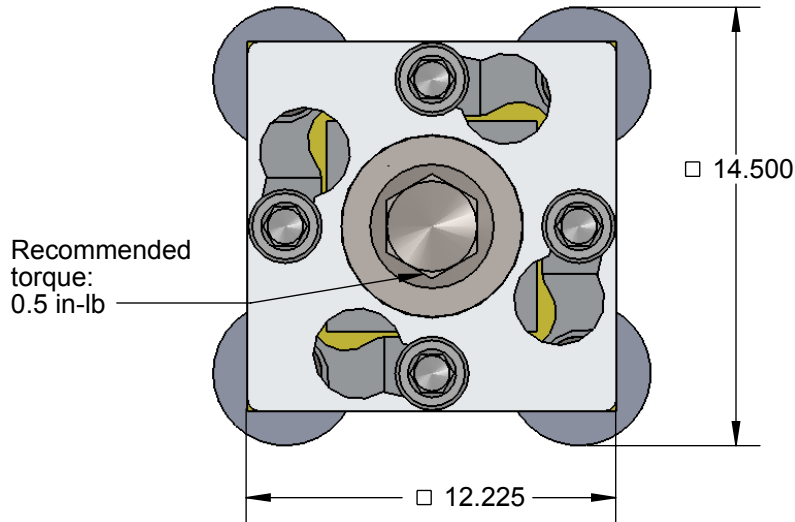


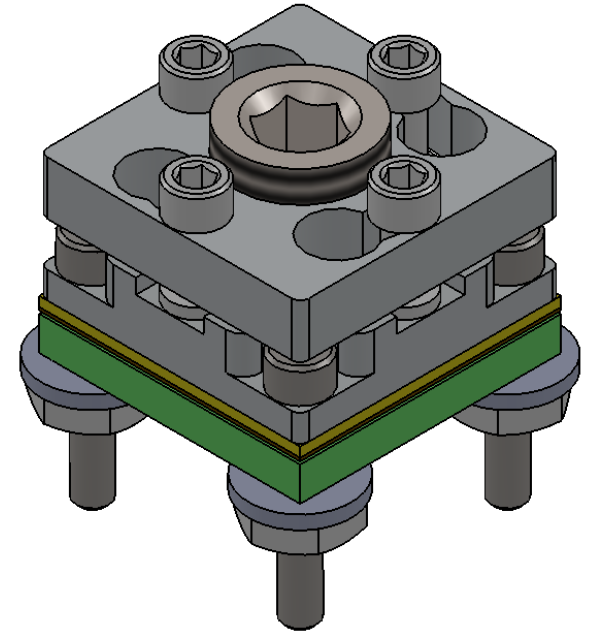
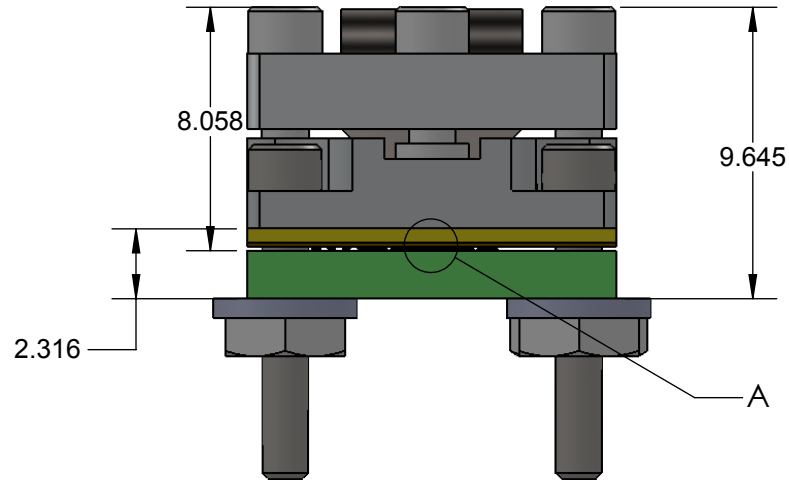
Silver Button QFN Socket- Direct mount, solderless

Features

- Directly mounts to target PCB (needs tooling holes) with hardware
- High speed, reliable Elastomer connection
- Minimum real estate required
- Compression plate distributes forces evenly
- Easily removable swivel socket lid



DETAIL A
SCALE 16 : 1

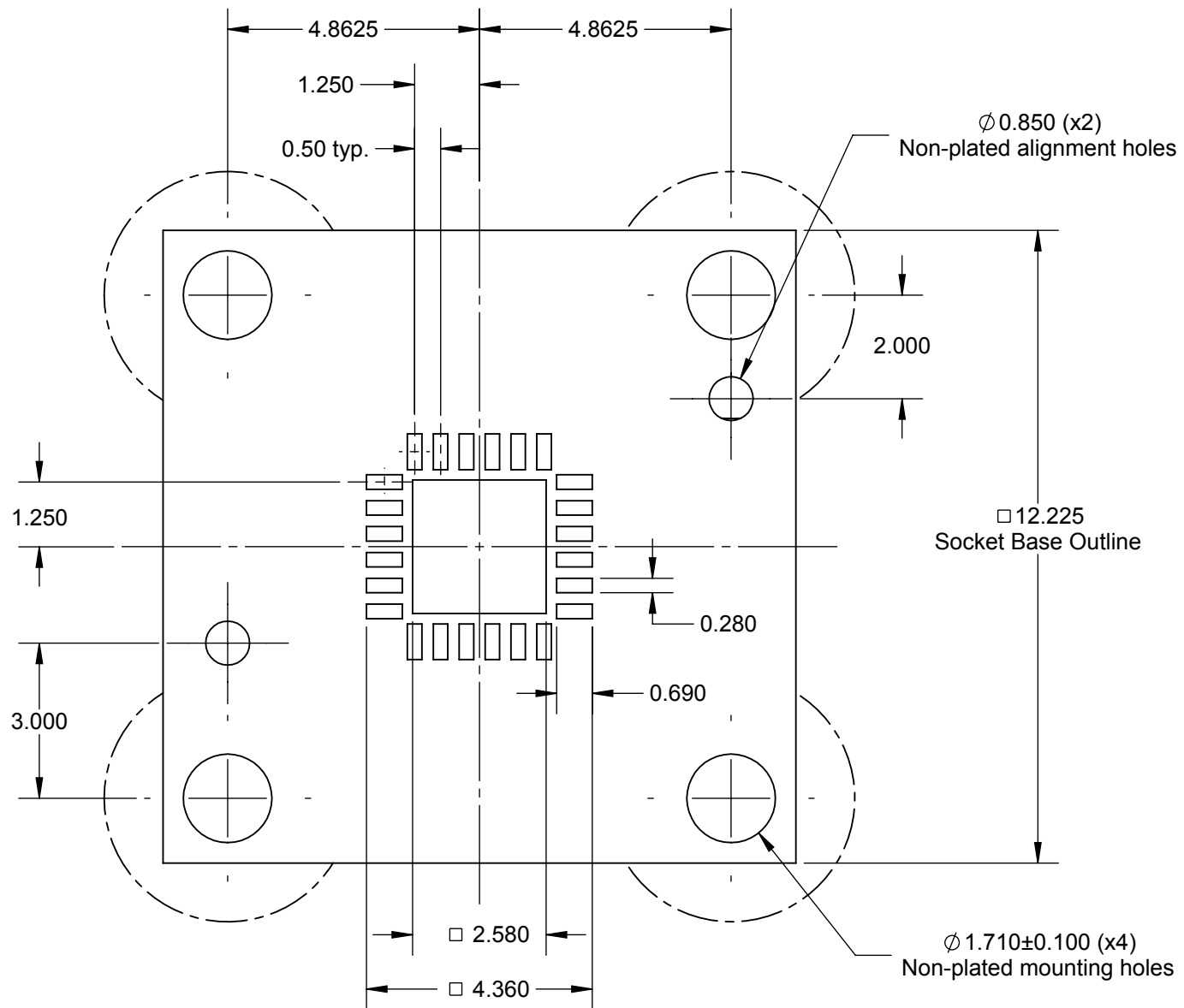


Description: GT-QFN24 Socket, 4mm, 0.5mm pitch

Primary dimension units are millimeters, Secondary dimension units are [inches], Weight is in grams.

Tolerances: Hole diameters $\pm 0.03\text{mm}$ [$\pm 0.001"$], Pitches (from true position) $\pm 0.025\text{mm}$ [$\pm 0.001"$], substrate thickness tolerance $\pm 10\%$, all other tolerances $\pm 0.13\text{mm}$ [$\pm 0.005"$] unless stated otherwise. Materials and specifications are subject to change without notice.


<p>GT-QFN-3008 Drawing</p> <p>©2015 Ironwood Electronics, Inc. Tele: (800) 404-0204 www.ironwoodelectronics.com</p>	<p>Material: N/A Finish: N/A Weight: 1893.03</p>	<p>STATUS: Released ENG: M.A. Fedde FILE: GT-QFN-3008 Dwg</p>	<p>SHEET: 1 OF 4 DRAWN BY: M. Raske DATE: 07/02/2015</p>	<p>REV. A SCALE: 4:1</p>
--	--	---	--	------------------------------



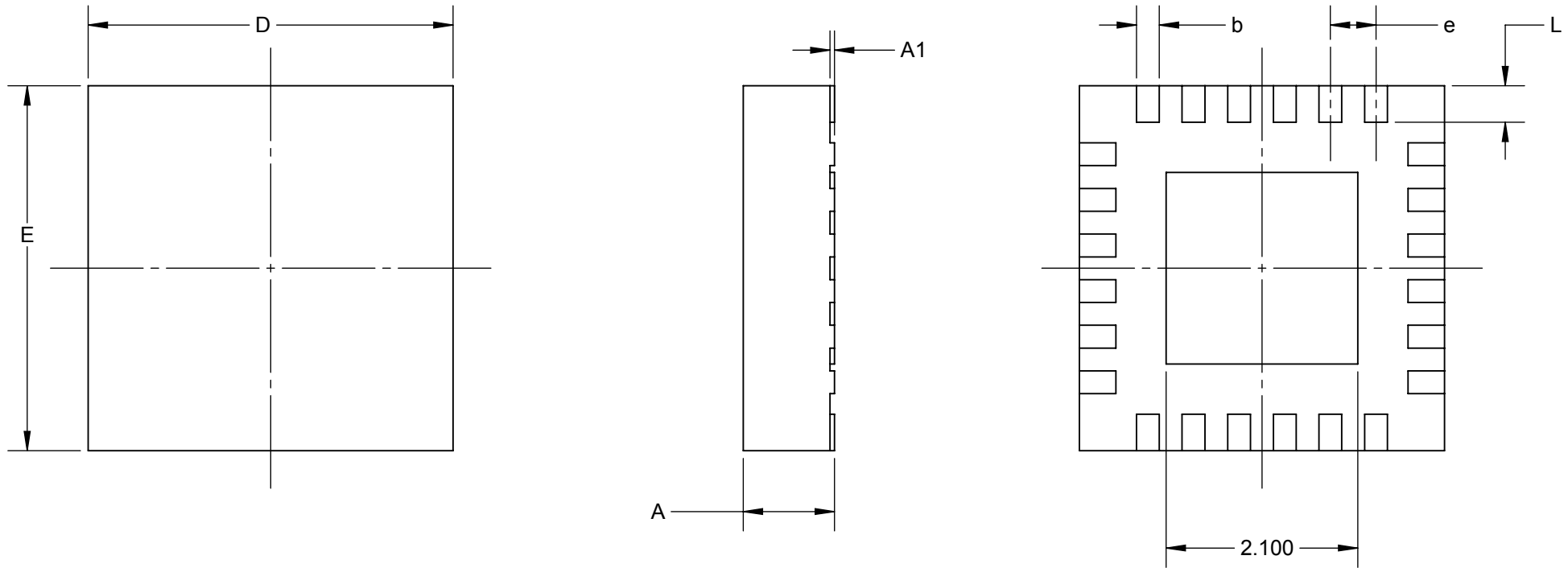
Description: Recommended PCB Layout

Primary dimension units are millimeters, Secondary dimension units are [inches], Weight is in grams.

Tolerances: Hole diameters $\pm 0.0254\text{mm}$ [$\pm 0.001"$], Pitches (from true position) $\pm 0.0762\text{mm}$ [$\pm 0.003"$], substrate thickness tolerance $\pm 10\%$, all other tolerances $\pm 0.127\text{mm}$ [$\pm 0.005"$] unless stated otherwise. Materials and specifications are subject to change without notice.

 <p>GT-QFN-3008 Drawing ©2015 Ironwood Electronics, Inc. Tele: (800) 404-0204 www.ironwoodelectronics.com</p>	<p>Material: N/A Finish: N/A Weight: 1893.03</p>	<p>STATUS: Released ENG: M.A. Fedde FILE: GT-QFN-3008 Dwg</p>	<p>SHEET: 2 OF 4 DRAWN BY: M. Raske DATE: 07/02/2015</p>	<p>REV. A SCALE: 8:1</p>

Ironwood Package Code: QFN24C



1. Dimensions are in millimeters.
2. Interpret dimensions and tolerances per ASME Y14.5M-1994.
3. Dimension b is measured at the maximum solder ball diameter, parallel to datum plane Z .
4. Datum Z (seating plane) is defined by the spherical crowns of the solder balls.
5. Parallelism measurement shall exclude any effect of mark on top surface of package.


DIM	Minimum	Maximum
A	0.80	1.00
A1	0.00	0.05
b	0.18	0.30
L	0.30	0.50
D	4.00 BSC	
E	4.00 BSC	
e	0.50 BSC	

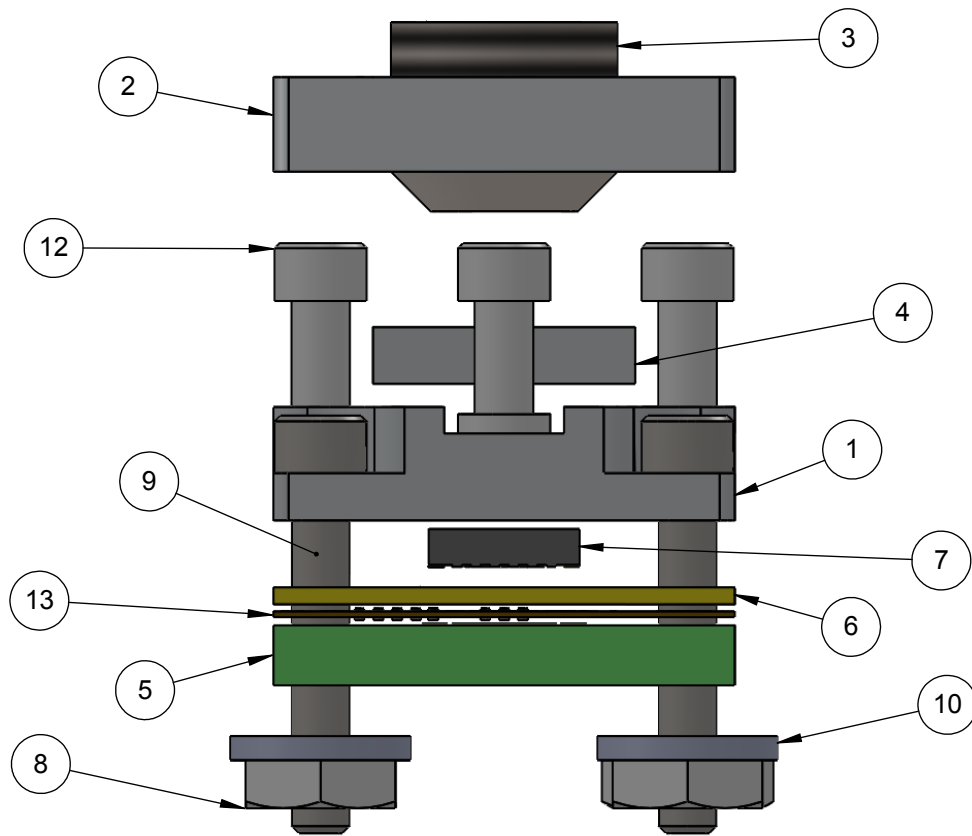
Description: Compatible Device

Primary dimension units are millimeters, Secondary dimension units are [inches], Weight is in grams.

Tolerances: Hole diameters $\pm 0.0254\text{mm}$ [± 0.001 "]. Pitches (from true position) $\pm 0.0762\text{mm}$ [± 0.003 "], substrate thickness tolerance $\pm 10\%$, all other tolerances $\pm 0.127\text{mm}$ [± 0.005 "] unless stated otherwise. Materials and specifications are subject to change without notice.

Package Code: QFN24C

	GT-QFN-3008 Drawing ©2015 Ironwood Electronics, Inc. Tele: (800) 404-0204 www.ironwoodelectronics.com	Material: N/A Finish: N/A Weight: 1893.03	STATUS: Released ENG: M.A. Fedde FILE: GT-QFN-3008 Dwg	SHEET: 3 OF 4 DRAWN BY: M. Raske DATE: 07/02/2015	REV. A SCALE: 15:1



ITEM NO.	Description	Material
1	Socket Base 7mm	7075-T6 (SN)
2	Socket Lid 7mm	7075-T6 Aluminum Alloy
3	Compression Screw M6x1	Stainless Steel (18-8)
4	Compression Plate 7mm IC, 1.5mm thick	7075-T6 (SN)
5	Test PCB QFN24	Material <not specified>
6	IC (MLF) Guide	Torlon 4203
7	QFN24 IC	Material <not specified>
8	Nut, #0-80, SS	Stainless Steel (18-8)
9	#0-80 X .375 LG, SOC HD CAP SCREW, ALLOY STL, BLK OXIDE	Alloy Steel
10	Washer, #0 x .025", Nylon	Nylon 6/6
11	Alignment Pin 1/32" dia. x 1/8" lng	Chrome Stainless Steel
12	#0-80 Shoulder Screw, 1.59mm thread length	Stainless Steel (303)
13	GT Elastomer QFN24C / MLF24C	N/A

Description: Socket Assy, Insulation Plate

Primary dimension units are millimeters, Secondary dimension units are [inches], Weight is in grams.

Tolerances: Hole diameters $\pm 0.03\text{mm}$ [$\pm 0.001"$], Pitches (from true position) $\pm 0.025\text{mm}$ [$\pm 0.001"$], substrate thickness tolerance $\pm 10\%$, all other tolerances $\pm 0.13\text{mm}$ [$\pm 0.005"$] unless stated otherwise. Materials and specifications are subject to change without notice.

GT-QFN-3008 Drawing ©2015 Ironwood Electronics, Inc. Tele: (800) 404-0204 www.ironwoodelectronics.com	Material: N/A Finish: N/A Weight: 1893.03	STATUS: Released ENG: M.A. Fedde FILE: GT-QFN-3008 Dwg	SHEET: 4 OF 4 DRAWN BY: M. Raske DATE: 07/02/2015	REV. A SCALE: 5:1