

Han Guiding Relay module, male

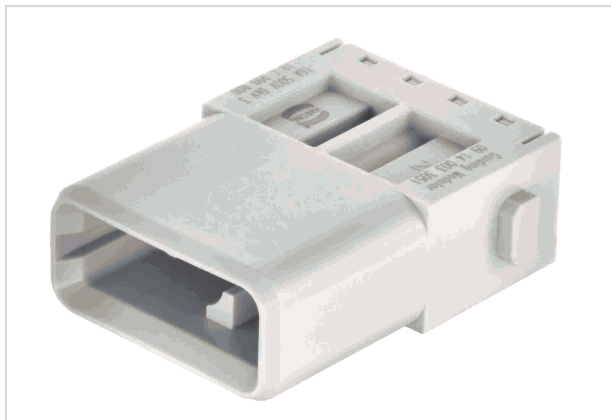


Image is for illustration purposes only. Please refer to product description.

Part number	09 14 003 3051
Specification	Han Guiding Relay module, male
HARTING eCatalogue	https://b2b.harting.com/09140033051

Identification

Category	Modules
Series	Han-Modular®
Type of module	Han® Guiding module
Description of the module	Relay module
Features	2 contacts with relay function (last mate - first break) Enables other power contacts to be switched off via a relay and thus offers greater safety in the event of a fault (when used as intended, the connector must not be plugged in or disconnected under voltage / load)

Version

Termination method	Crimp termination
Gender	Male
Number of contacts	3
Details	Please order crimp contacts separately.

Technical characteristics

Conductor cross-section	[0,14] ... [4 mm ²]
Rated current	16 A
Rated voltage	500 V
Rated impulse voltage	6 kV
Pollution degree	3
Insulation resistance	>10 ¹⁰ Ω
Limiting temperature	[-40] ... [+125 °C]
Mating cycles	≥500



Pushing Performance

Technical characteristics

Lock-in range	±4 mm
---------------	-------

Material properties

Material (insert)	Polycarbonate (PC)
Colour (insert)	RAL 7032 (pebble grey)
Material flammability class acc. to UL 94	V-0
RoHS	compliant
ELV status	compliant
China RoHS	e
REACH Annex XVII substances	No
REACH ANNEX XIV substances	No
REACH SVHC substances	No

Specifications and approvals

Specifications	EN 60664-1 IEC 61984
CE	0

Commercial data

Packaging size	2
Net weight	14 g
Country of origin	China
European customs tariff number	85389099
eCl@ss	90909090 Interim classification (unspecified)