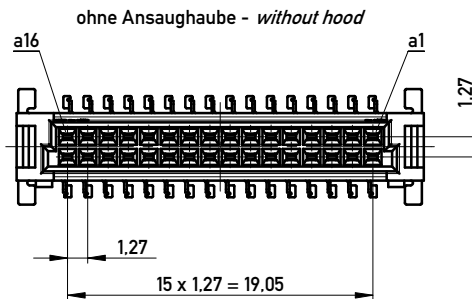
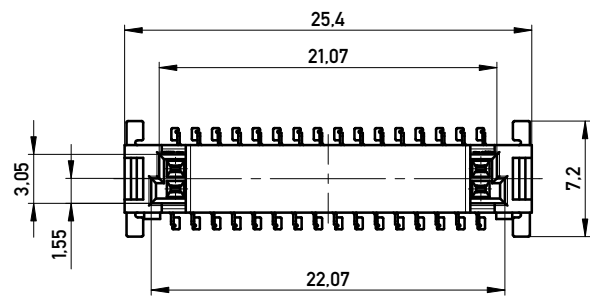
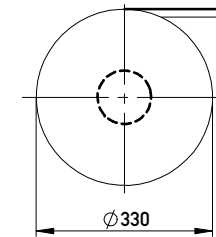
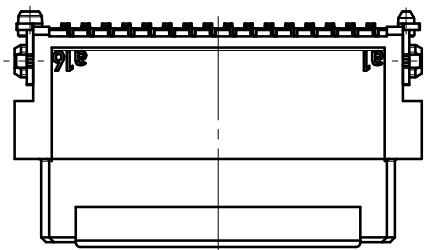
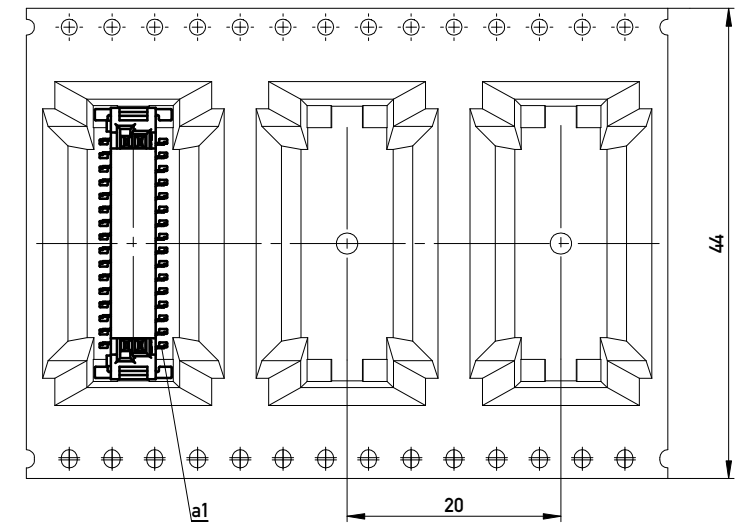


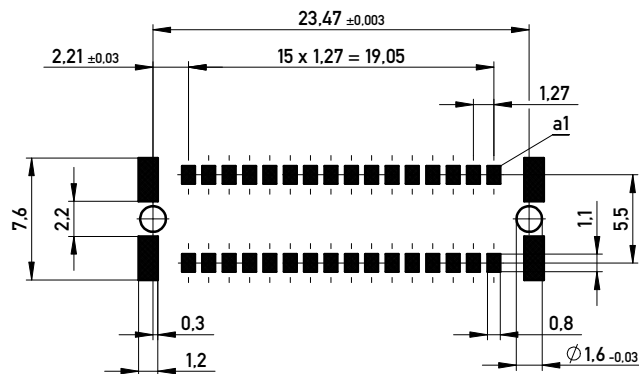
Verpackt im Gurt nach DIN IEC 60286-3
 Tape on Reel Packaging according to DIN IEC 60286-3
 Verpackungseinheit: 170 Stück
 Packaging unit: 170 pcs



Abspulrichtung - Reel off Direction



Leiterplatten-Layout Vorschlag für SMT
 PCB-Layout Proposal for SMT



Anforderungsstufe 1
 Performance Level 1

Kontaktbereich vergoldet
 Mating Area gold plating

Anschlussbereich verzinkt 4-6 µm
 Terminal Area 4-6 µm tin plating

Koplanarität der Anschlüsse ≤ 0,1 mm
 Coplanarity Area of Termination ≤ 0.1 mm

BA 7-23 - hohe Bauhöhe
 type 7-23 - high profile

Information:	Tolerances	 All Dimensions in mm	Scale	3:1
	All rights reserved. Only for Information. To ensure that this is the latest version of this drawing, please contact one of the ERNI companies before using.		Designation Federl. SMC-B 32-SMD-BA7-23 Female SMC-B 32-SMT-type7-23	
Subject to modification without prior notice. Drawing will not be updated.		 www.ERNI.com		354072
b	03.12.2013	Class		SMCB
Index	Date			I A3

Copyright by ERNI GmbH. Proprietary notice pursuant to ISO 16016 to be observed.