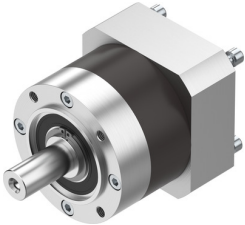


Gearbox EMGA-120-P-G3-SAS-100

Part number: 552196

FESTO



Data sheet

| Feature | Value |
|---------------------------------|------------------------|
| Gearbox flange size | 120 mm |
| Motor flange size | 100 mm |
| Torsional backlash | 0.12 deg |
| Type code | EMGA |
| Gearbox type | Planetary gear |
| Gear ratio | 3:1 |
| Max. actuator speed | 6500 1/min |
| Gearbox operating temperature | -25 °C ... 90 °C |
| Degree of protection | IP54 |
| Continuous output torque | 115 Nm |
| Mass moment of inertia, gearbox | 2.63 kgcm ² |
| Max. output torque | 184 Nm |
| Max. efficiency | 98 % |
| Torsional rigidity | 12 Nm/arcmin |
| Product weight | 6000 g |
| Gearbox interface, output shaft | 120G |
| Gearbox interface, actuator | 100A |
| Note on materials | RoHS-compliant |