



Data Sheet



Product Category: Filters

| | | | |
|---------------|----------------------|------------------|---------------|
| Series Number | Package | Description | Last Modified |
| 761 ~ 762 | Surface Mount Filter | 10.7 MHz Ceramic | Jan. 01 2007 |

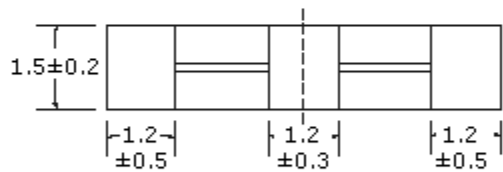
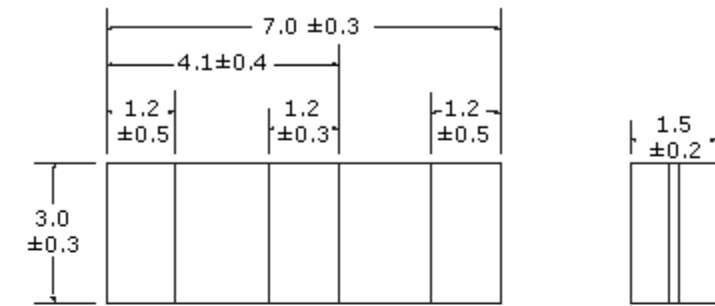
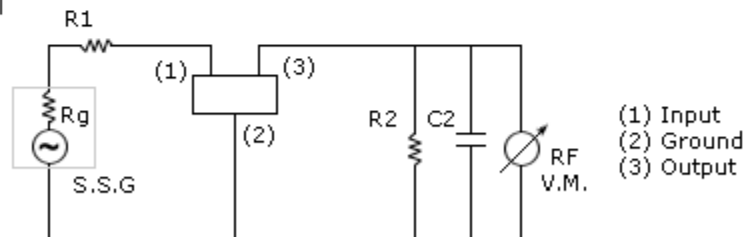
Filter FEATURES

- Surface Mount Ceramic Filter
- Low Loss
- Wide / Narrow Bandwidths
- RoHS Compliant



TECHNICAL CHARACTERISTICS / PART NUMBER GUIDE

| Part Number | 3 dB Bandwidth | 20 dB Bandwidth | Insertion Loss | Spurious Attenuation (9 ~ 12 KHz) | In/Out Impedance |
|--------------|----------------|-----------------|----------------|-----------------------------------|------------------|
| | KHz min. | KHz max. | dB max. | dB min. | ohm |
| 762-0107-HY | 110 ±30 | 350 | 9.0 | 30 | 330 |
| 761-0107-HY | 110 ±30 | 320 | 6.0 ±2.0 | 35 | 330 |
| 762-0107-J | 150 ±40 | 430 | 10.0 | 30 | 330 |
| 761-0107-J | 150 ±40 | 380 | 5.5 ±2.0 | 35 | 330 |
| 762-0107-S3 | 180 ±40 | 520 | 6.0 | 30 | 330 |
| 761-0107-S3 | 180 ±40 | 470 | 4.0 ±2.0 | 35 | 330 |
| 762-0107-S2 | 230 ±50 | 570 | 6.0 | 30 | 330 |
| 761-0107-S2 | 230 ±50 | 510 | 3.5 ±2.0 | 35 | 330 |
| 762-0107-A5 | 280 ±50 | 650 | 6.0 | 30 | 330 |
| 761-0107-A5 | 280 ±50 | 590 | 3.0 ±2.0 | 35 | 330 |
| 762-0107-A20 | 330 ±50 | 700 | 3.0 ±2.0 | 30 | 330 |
| 761-0107-A19 | fn ±175 min. | 950 | 3.0 ±2.0 | 20 (5~15 MHz) | 470 |

PACKAGE DIMENSIONS (mm)**Test Circuit**

$R1=280\Omega\pm5\%$, $R2=330\Omega\pm5\%$, $Rg=50\Omega$
 $C2=10pF$
 (Including Stray capacitance and input capacitance of RF voltmeter)
 S.S.G.: Output Voltmeter

Oscilent Corporation - CALL **949.252.0522**
 18195 East McDermott Street . Building D . Irvine . CA 92614 . USA
 Fax: 949.252.0599 . E-Mail: Sales@Oscilent.com

Series No.: 761 to 762