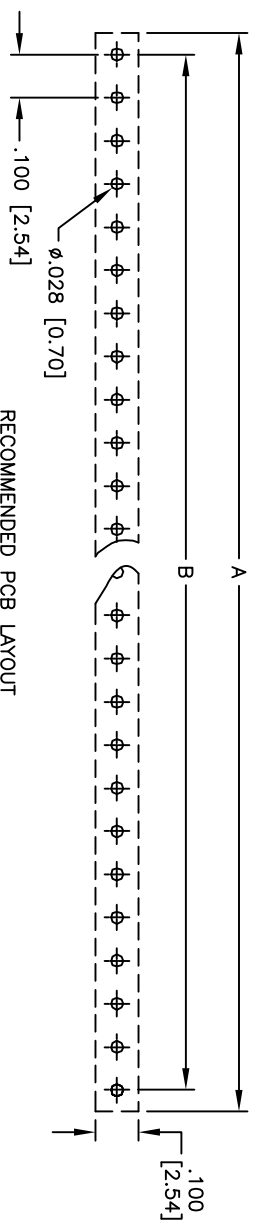
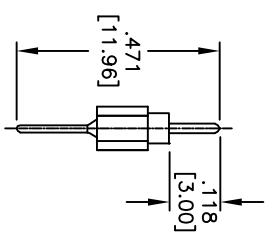
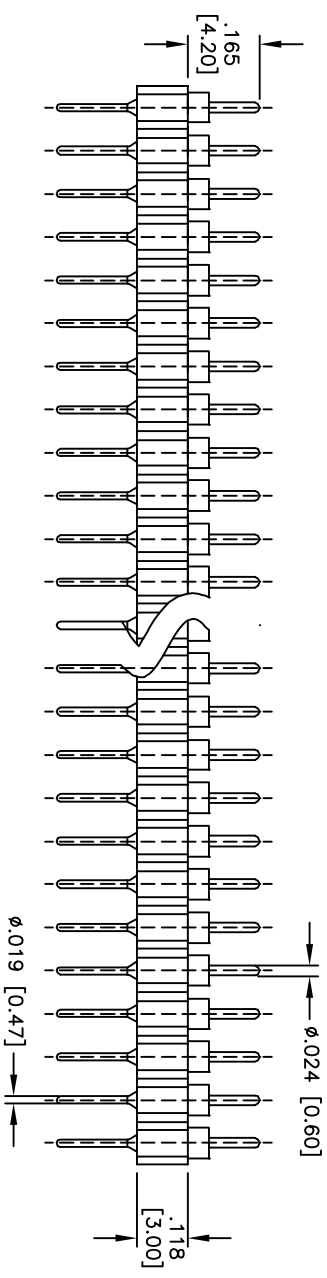
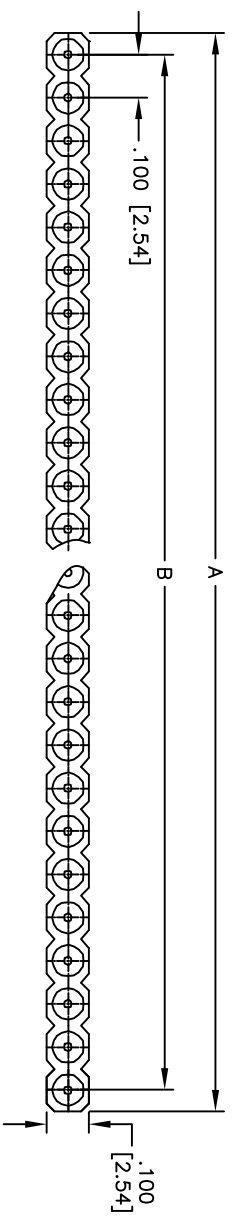


APPROVED: _____
 DATE: _____ TITLE: _____

| Rev | AWO # | Description | Date | Appr |
|-----|-------|-------------|----------|------|
| - | | RELEASED | 6/24/08 | |
| A | | REDRAWN | 11/17/10 | |



Positions: 1 thru 40
 A = .100 [2.54] x No. of Positions per Row
 B = .100 [2.54] x No. of Spaces per Row

SPECIFICATIONS:
 Material: PPS, Glass reinforced, rated UL 94V-0
 Contacts: Brass
 Plating: Gold over Nickel underplate overall
 Electrical:
 Current rating: 3 Amp max
 Insulation resistance: 1,000 Mohms min @ 500 VAC
 Dielectric withstanding voltage: 500 VAC for 1 minute
 Operating temperature: -55°C to +125°C
 Environmental:
 Lead free, RoHS compliant
 Recommended soldering temp: 235°C for 5 seconds



| | |
|--|-------------|
| UNLESS OTHERWISE SPECIFIED ALL DIMENSIONS ARE INCHES [MM] | |
| TOLERANCES: EXCEPT AS NOTED | |
| INCHES | HOLES |
| X ± .10 | ØX ± .10 |
| .XX ± .020 | ØXX ± .015 |
| .XXX ± .015 | ØXXX ± .010 |
| APPROVALS | DATE |
| DRAWN | DY |
| CHECKED | |
| APPROVED | |

ADAM TECH
 909 Rahway Avenue, Union, NJ 07083
 Phone: 908-687-5000 Fax: 908-687-5710
 TITLE: SCREW MACHINE TERMINAL STRIP, SINGLE ROW
 STRAIGHT, .100" SPACING, GOLD

| | | |
|--------|--------------|--------------|
| SIZE | PART NO. | REV. |
| X | MCT-1-XX-1-G | A |
| REF: | S00007T | SHEET 1 OF 1 |
| SCALE: | NTS | |