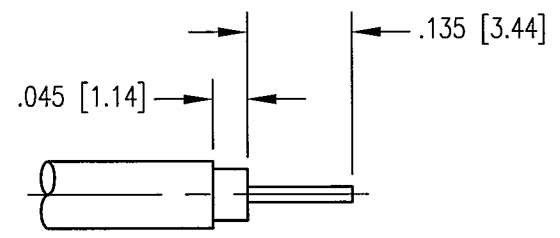
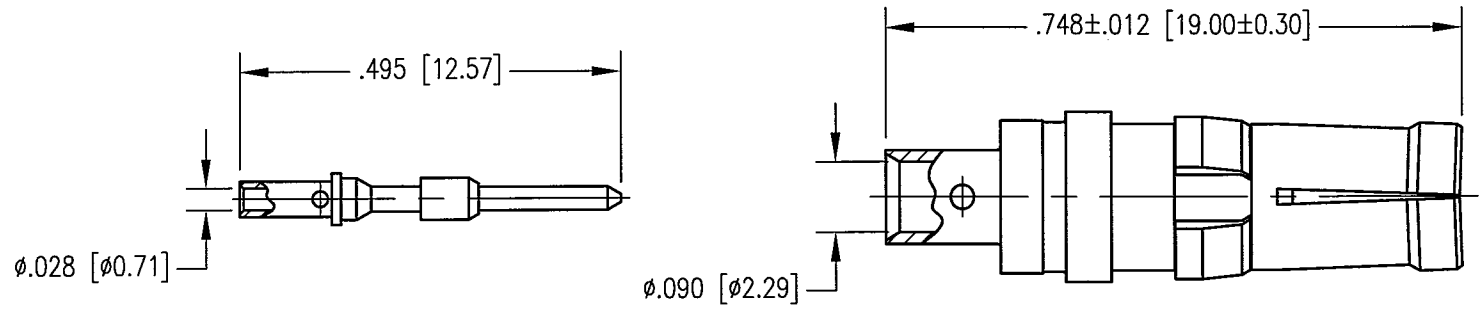


| REV | DESCRIPTION | BY DATE | APPD |
|-----|----------------------|----------------|------|
| A | RELEASE PER ECR 7441 | 8/30/02 JWH | JWH |



CABLE TRIMMING DIMENSIONS

NOTES:

- MATERIALS:
 FRONT BODY: COPPER ALLOY
 REAR BODY AND CONTACT: BRASS PER ASTM B16
 INSULATOR: TEFLON PER ASTM D1710
 CLIP RING: BERYLLIUM COPPER PER ASTM B194
- FINISH:
 BODY AND CONTACT: .000030 MIN. GOLD PER MIL-G-45204 OVER
 .000050 MIN. NICKEL PER QQ-N-290
 CLIP RING: .000100 MIN. NICKEL PER QQ-N-290 OVER
 COPPER FLASH
- FOR USE WITH .085 SEMI-RIGID CABLE OR EQUIVALENT.
- FOR CABLING PROCEDURE USE CAP 5-15 WITH TRIMMING DIMENSIONS SHOWN.

| | | | |
|--|-----------------|---|-----------------|
| PER ASME Y14.5M-1994 UNLESS OTHERWISE SPECIFIED: DIMENSIONS ARE IN INCHES [MM] | | NORTHROP GRUMMAN | |
| TOLERANCES: DECIMALS .XX ± .01 [0.254] .XXX ± .005 [0.127] ANGLES ± 2° | | Winchester Electronics 400 Park Road Watertown, CT 06795 | |
| CUSTOMER DRAWING | | TITLE RDM-HF RECEPTACLE | |
| DRAWN JWH | DATE 8/13/02 | CHECKED JED | DATE 8/26/02 |
| APPROVED JEM | DATE 8/22/02 | APPROVED KJT | DATE 8/26/02 |
| A 291-510-0850G | | SHT. 1 | OF 1 REV. A |