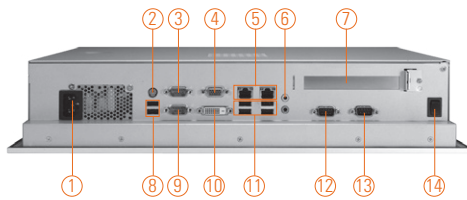
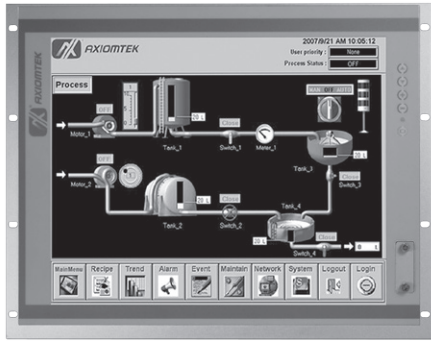


# P1197E-861

19" SXGA TFT Intel® Core™ i7/i5/i3, Celeron® & Pentium® Expandable Industrial Touch Panel Computer with 1 PCI or 1 PCIe Slot



- |                               |                            |                       |
|-------------------------------|----------------------------|-----------------------|
| 1. AC Plug                    | 6. Audio (Mic-in/Line-out) | 11. 4 x USB 2.0       |
| 2. PS2 Keyboard & Mouse combo | 7. 1 x PCIe x 4 or 1 x PCI | 12. 1 x RS-232 (COM3) |
| 3. 1 x RS-232/422/485 (COM1)  | 8. 2 x USB 2.0             | 13. 1 x RS-232 (COM4) |
| 4. 1 x VGA                    | 9. 1 x RS-232 (COM2)       | 14. Power Switch      |
| 5. Ethernet x2                | 10. 1 x DVI-D              |                       |



## Introduction

The P1197E-861 is a multimedia 19" touch panel PC for kiosk application. It has a fashionable mechanism design and industrial-grade material front bezel which can avoid damage from chemical corrosion. To meet the demands of multimedia application, the P1197E-861 is powered by a high performance LGA1155 socket 3rd & 2nd generation Intel® Core™ processor with the Intel® H61 Express chipset. It features four COM ports, two Gigabit Ethernet and up to 16 GB memory of dual-channel DDR3 that delivers high computing capability for high performance-demanding applications. The industrial touch panel PC is most suitable for kiosk, factory and automation.

### Expandable for 1 PCIe or 1 PCI

The P1197E-861 has 1 PCIe x4 or 1 PCI slot for expansion purpose. User can easily plug in standard half-size PCI or PCIe card for any requirement.

### Speaker and WLAN Antenna Supported

The P1197E-861 features built-in speakers for kiosk application to display multimedia content program. It also supports WLAN module antenna (optional) for wireless network connectivity.

### SATA HDD Trays for Easy Maintenance

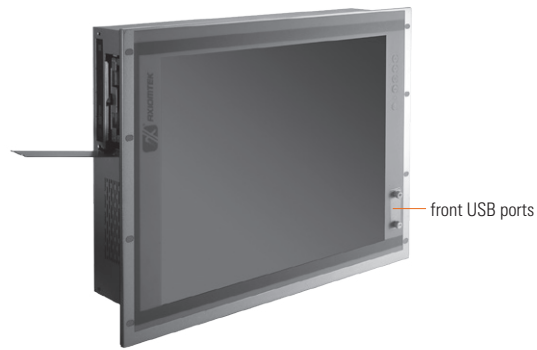
Without the complicated steps, users can maintain hard drive in 2 steps that make the work more efficiency.

### Friendly Less Screw Design

Removing the back cover to maintain the system in unscrewing 3 screws only that saving your time and increasing our work efficiency many times.

## Features

- 19" SXGA TFT LCD display
- LGA1155 socket 3rd & 2nd generation Intel® Core™ i7/i5/i3, Celeron® & Pentium® processor
- Intel® H61 chipset
- Easy installation: Less screw design for user's convenience
- 6 USB 2.0 (back), 2 USB 2.0 (front) and 4 COM ports
- Flexible expansion interface (PCIe x4 or PCI slot)
- Built-in speakers and optional Wi-Fi 802.11 b/g/n module
- Robust aluminum with IP65 compliant front bezel design



## Specifications

Front Bezel	Aluminum w/ IP65/NEMA 4 rugged protection	
LCD Panel	Display Type	19" SXGA TFT LCD
	Brightness	350 nits
	Resolution	1280 x 1024 pixels
	Viewing Angle	170°/160°
Main System	CPU	LGA1155 socket 3rd & 2nd generation Intel® Core™ i7/i5/i3, Celeron® & Pentium® processor
	Chipset	Intel® H61
	System Memory	2 x 204-pin DDR3 SO-DIMM dual channel max. up to 16 GB
	BIOS	AMI UEFI BIOS with OA 3.0 built
	Storage	2 x 2.5" SATA HDD
	Drive	1 x builtin slim DVD-RW (optional)
	Watchdog Timer	255 levels, 1-255 sec.



## Specifications

IO Connector	3 x RS-232 (COM 2-4) 1 x RS-232/422/485 (COM 1) 1 x RS-232 with 5V & 12V (COM 3) 1 x DVI-D 1 x VGA 6 x USB 2.0 (back) 2 x USB 2.0 (front) 2 x 10/100/1000 Mbps Ethernet 1 x Audio (Mic-in/Line-out)
Expansion Interface	1 x PCIe x4 or 1 x PCI
Touchscreen	5-wire resistive type Light transmission 79% 1 million activations (typical) at a single point
Power Supply	100 ~ 240VAC, 270W
Dimensions	469 mm (18.46") (W) x 94.7 mm (3.73") (D) x 380.8 mm (14.99") (H)
Packing Dimension	615 mm (24.21") (W) x 250 mm (9.84") (D) x 585 mm (23.03") (H)
Weight(net/gross)	8 kg (17.64 lb)/ 10.4 kg (22.93 lb)
Environment	Operating Temperature: 0° ~ +45°C (+32°F ~ +113°F) Storage Temperature: -20°C ~ +65°C (-4°F ~ +149°F) Relative humidity: 10 ~ 90% @ 40°C, non-considering Operating vibration: 1.0G, 5-500Hz, random
Certificate	CE

## Ordering Information

P1197E-861 w/ PCIe	19" SXGA expandable industrial touch panel computer supports LGA1155 socket Intel® 3rd & 2nd generation Core™ i7/i5/i3, Pentium® & Celeron® processor, resistive touch screen and 1 PCIe x4 slot, 100~240VAC
P1197E-861 w/ PCI	19" SXGA expandable industrial touch panel computer supports LGA1155 socket Intel® 3rd & 2nd generation Core™ i7/i5/i3, Pentium® & Celeron® processor, resistive touch screen and 1 PCI slot, 100~240VAC

\* Specification and certifications are based on options and may vary.

## Optional Accessories

82211970060E	DVD-RW kit
82211970070E	VESA & wall mount kit
82231570160E	Wireless LAN kit
E202003330	VM-101 (VESA ARM clamp type)
E202003329	VM-105 (VESA ARM wall-mount)

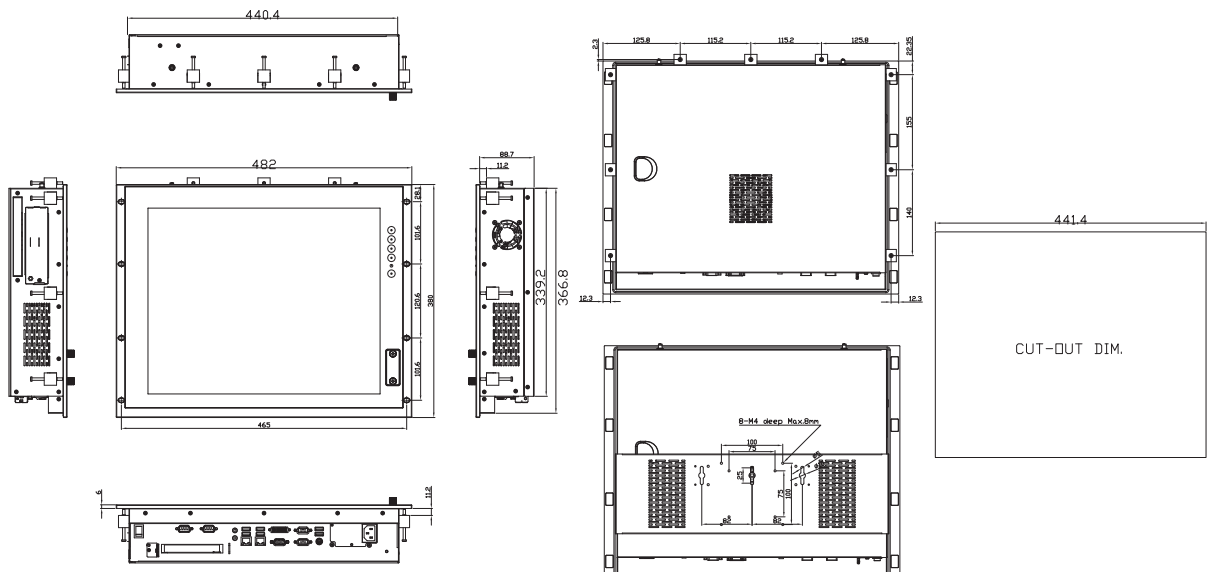
## Optional OS Installation

Windows® XP/XPe
Windows® 7/8.1
Windows® Embedded 7/8



▲ Less screw design

## Dimensions



Overview

Fanless Touch Panel Computers

Heavy-duty Fanless Touch Panel Computers

3 Industrial Touch Panel Computers

Industrial Touch panel Monitors

Infotainment Touch Panel Computers

Healthcare & Medical Solutions

Open Frame Panel Computers

Accessories

