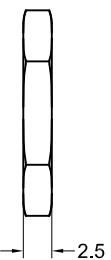
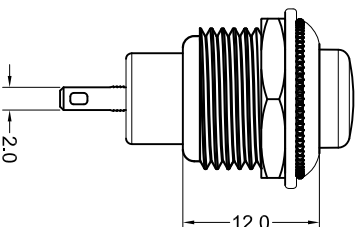
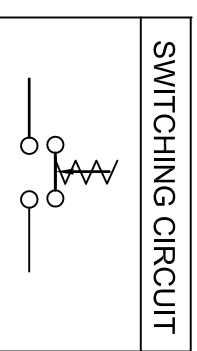
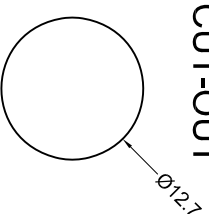


备注：
拧螺母，配垫圈。



Operating Pressure:300±100gf
 Operating Stroke:2.0mm±0.4
 Function:(ON)-OFF
 Base:PA66
 Shell:Barss Plating Cr
 Terminal:Brass Plating Ag
 Button:ABS
 Rating:3A 125V AC
 1.5A 250V AC
 Contact Resistance:50mΩ MAX.
 Insulation Resistance:DC500V 100MΩ MIN .
 Dielectric Strength:1000VAC 1 minute
 Electrical life:50,000 cycles
 Mechanical life:100,000 cycles
 Operating Temperature:-20°C~80°C
 Safety Approval:

CUT-OUT



公差 TOLERANCES .X±0.5 .XX±0.3 角度 ANGLE ±1° 单位 DIMENSION UNIT mm.

DASUNG 东莞市德松电子有限公司
 DASUNG (DONGGUAN) ELECTRONICS CO.,LTD

版本 VER	变更说明 CHANGE DESCRIPTION	日期 DATE	ECON NO.	核准 APPROVED BY	汤忍仲	核对 CHECKED BY	汤忍仲	绘图 DRAWN BY	吴润成	品名 TITLE	PBM-12M11-PR-N-NN-B1S-NW-0004	图号 DRAWING NO	1011442