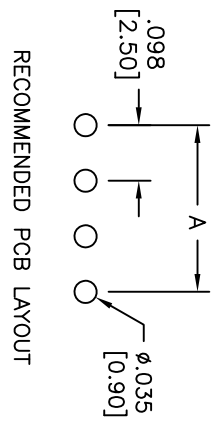
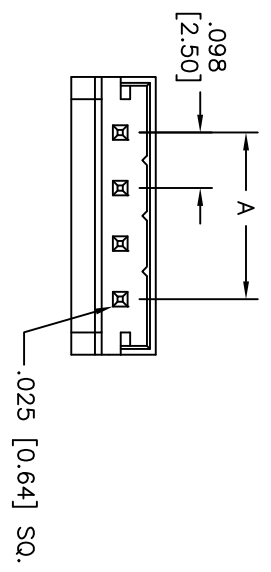
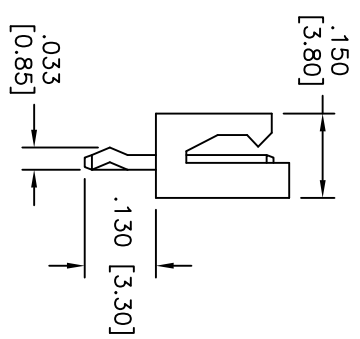
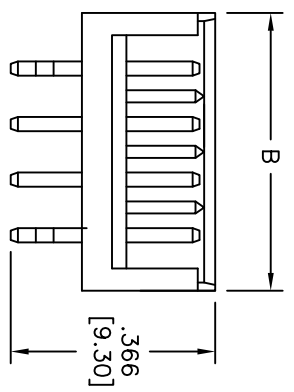


APPROVED: _____
 DATE: _____ TITLE: _____

Rev	AWO #	Description	Date	Appr
-		RELEASED	9/19/05	
A		REDRAWN	4/16/10	



RECOMMENDED PCB LAYOUT



SPECIFICATIONS:
 Material: Insulator: Nylon, rated UL 94V-0
 Insulator color: Nature
 Contacts: Brass
Plating: Tin over Copper underplate overall

Electrical:
 Operating voltage: 250 VAC max
 Current rating: 3 Amps max
 Contact resistance: 10 mohms max
 Insulation resistance: 1000 Mohms min
 Dielectric withstanding voltage: 800 VAC for 1 minute

Temperature Rating:
 Operating temperature: -25°C to +85°C
 Environmental: Lead free, RoHS compliant.
 Recommended soldering temp: 235°C for 5 sec.



Positions: 2 thru 15
 A = No. of Spaces x .098 [2.50]
 B = No. of Positions x .098 [2.50] + .098 [2.50]

UNLESS OTHERWISE SPECIFIED
 ALL DIMENSIONS ARE INCHES [MM]
 TOLERANCES: EXCEPT AS NOTED

INCHES	HOLES
.X ± .10	ØX ± .10
.XX ± .020	ØXX ± .015
.XXX ± .015	ØXXX ± .010

ADAM TECH
 909 Rahway Avenue, Union, NJ 07083
 Phone: 908-687-5000 Fax: 908-687-5710

APPROVALS		DATE	TITLE	SIZE	PART NO.	SCALE	SHEET	REV.
DRAWN	SS	9/19/05	2.5mm SHROUDED HEADER, SINGLE ROW, TIN PLATED	X	25SH-C-XX-TS	NTS	1 OF 1	A
CHECKED								
APPROVED								