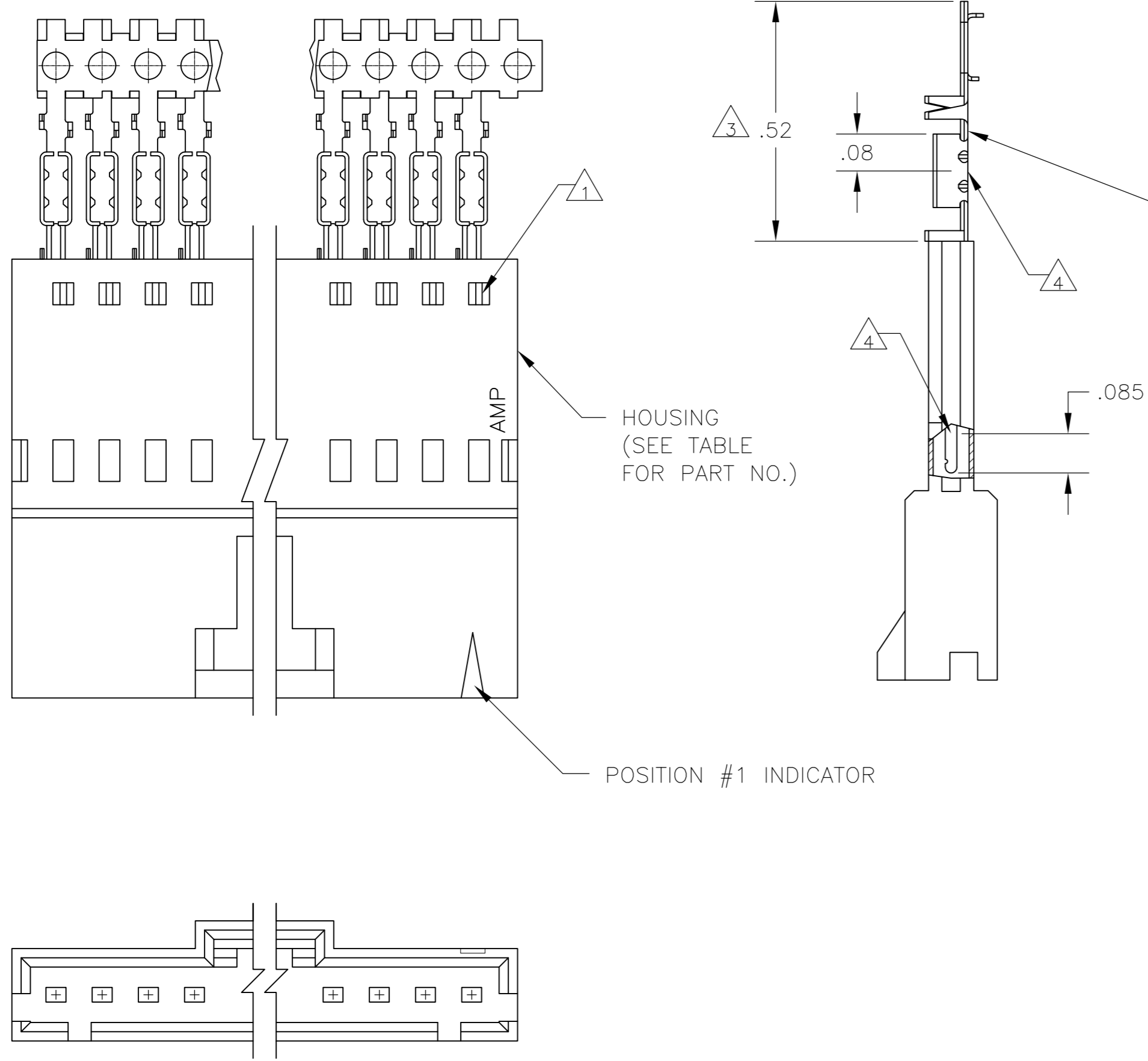


THIS DRAWING IS UNPUBLISHED. RELEASED FOR PUBLICATION  
 © COPYRIGHT BY TYCO ELECTRONICS CORPORATION. ALL RIGHTS RESERVED.

LOC	DIST	REVISIONS					
		P	LTR	DESCRIPTION	DATE	DWN	APVD
AD	00	P		EC 0G3C 0766 04	27DEC04	BSV	JLG
		P1		REVISED PER ECO-09-020932	26AUG09	KK	AEG



CONTACT IDENTIFICATION LETTER "D" (LOCATED IN THIS AREA)

Callout	Part No.	Quantity	Part No.	Quantity
8	2-103653-4	25	7-103660-4	
8	2-103653-3	24	7-103660-3	
8	2-103653-2	23	7-103660-2	
8	2-103653-1	22	7-103660-1	
8	2-103653-0	21	7-103660-0	
8	1-103653-9	20	6-103660-9	
8	1-103653-8	19	6-103660-8	
8	1-103653-7	18	6-103660-7	
8	1-103653-6	17	6-103660-6	
8	1-103653-5	16	6-103660-5	
8	1-103653-4	15	6-103660-4	
8	1-103653-3	14	6-103660-3	
8	1-103653-2	13	6-103660-2	
7	2-103653-4	25	2-103660-4	
7	2-103653-3	24	2-103660-3	
7	2-103653-2	23	2-103660-2	
7	2-103653-1	22	2-103660-1	
7	2-103653-0	21	2-103660-0	
7	1-103653-9	20	1-103660-9	
7	1-103653-8	19	1-103660-8	
7	1-103653-7	18	1-103660-7	
7	1-103653-6	17	1-103660-6	
7	1-103653-5	16	1-103660-5	
7	1-103653-4	15	1-103660-4	
7	1-103653-3	14	1-103660-3	
7	1-103653-2	13	1-103660-2	
6	1-103945-1	12	1-103660-1	
6	1-103945-0	11	1-103660-0	
5	103653-9	10	103660-9	
5	103653-8	9	103660-8	
5	103653-7	8	103660-7	
5	103653-6	7	103660-6	
5	103653-5	6	103660-5	
5	103653-4	5	103660-4	
5	103653-3	4	103660-3	
5	103653-2	3	103660-2	
5	103653-1	2	103660-1	

- 1 CONTACTS ARE LATCHED INTO THE PRELOAD WINDOWS
- 2 USE WITH #22-#26 AWG WIRE SIZE, .054/.030 INSULATION DIAMETER, .015 MAXIMUM INSULATION THICKNESS
- 3 THE DIMENSION APPLIES WITH THE FORWARD PRELOAD STOP IN CONTACT WITH THE HOUSING SURFACE
- 4 POINT OF MEASUREMENT FOR PLATING THICKNESS
- 5 FOR STRIP ASSEMBLIES SEE PART NUMBER 103945
- 6 MATERIAL- HOUSING: FLAME RETARDANT THERMOPLASTIC, COLOR: BLACK PINS: PHOS. BRONZE
- 7 FINISH- PINS: .000015 GOLD IN THE CONTACT AREA, .000050-.000100 BRIGHT TIN-LEAD ON THE TERMINATION AREA, OVER .000050 NICKEL.
- 8 FINISH- PINS: .000015 GOLD IN THE CONTACT AREA, .000050-.000100 MATTE TIN ON THE TERMINATION AREA, OVER .000050 NICKEL.
- 9 OBSOLETE PARTS: OBSOLETE CIS STREAMLINING PER D.RENAUD/D.SINISI

SUPERSEDED BY 1-103945-1  
 SUPERSEDED BY 1-103945-0  
 SUPERSEDED BY 103945-9  
 SUPERSEDED BY 103945-8  
 SUPERSEDED BY 103945-7  
 SUPERSEDED BY 103945-6  
 SUPERSEDED BY 103945-5  
 SUPERSEDED BY 103945-4  
 SUPERSEDED BY 103945-3  
 SUPERSEDED BY 103945-2  
 SUPERSEDED BY 103945-1

PLATING	HOUSING PART NUMBER	NO OF POSN	ASSEMBLY PART NUMBER

THIS DRAWING IS A CONTROLLED DOCUMENT.		DWN R.BROWN 26JUL00	Tyco Electronics Corporation Harrisburg, Pa 17105-3608	
DIMENSIONS: INCHES		CHK K.WRIGHT 26JUL00	NAME SHROUDED PIN ASSY, AMPMODU MTE, SINGLE ROW, .100 CL, POLARIZED, WITH LATCH WINDOWS, FOR #22-#26 AWG WIRE SIZE	
TOLERANCES UNLESS OTHERWISE SPECIFIED:		APVD K.WRIGHT 26JUL00	PRODUCT SPEC 108-25034	
0 PLC ± -		APPLICATION SPEC 114-25026		
1 PLC ± -		WEIGHT -		
2 PLC ± -		SIZE A2 CAGE CODE 00779 DRAWING NO C=103660		
3 PLC ± -		RESTRICTED TO -		
4 PLC ± -		SCALE 4:1 SHEET 1 OF 1 REV P1		
ANGLES ± -		CUSTOMER DRAWING		
FINISH SEE TABLE				