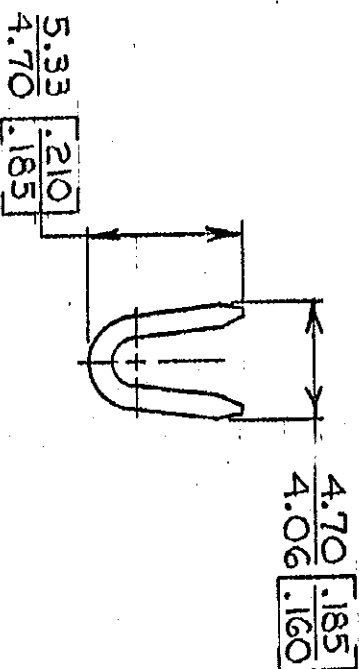
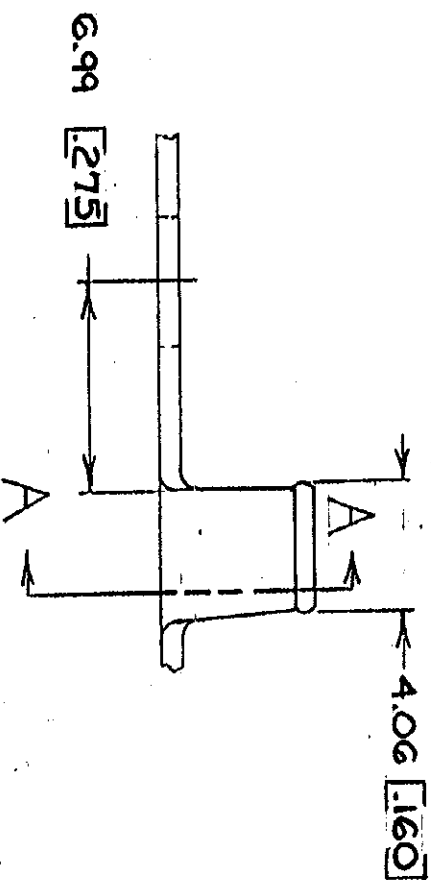
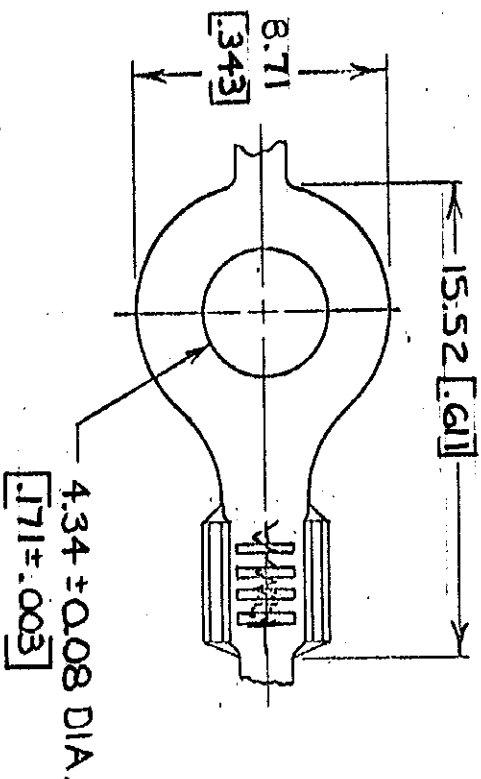


© COPYRIGHT 1965 BY AMP INCORPORATED, HARRISBURG, PA.  
 ALL INTERNATIONAL RIGHTS RESERVED. AMP INCORPORATED PRODUCTS  
 COVERED BY U. S. AND FOREIGN PATENTS AND/OR PATENTS PENDING.



SECT-A-A

- 1. CONTINUOUS STRIP, ON REELS.
- 2. DIMENSIONS IN BRACKETS ARE IN INCHES.

**METRIC**

REVISIONS				1	Loc	AF	DIST
P	F	ZONE	LTR	DESCRIPTION	DATE	APPROVED	
✓			S	REDRAWN & REVISED A-3943	9/26/78	[Signature]	
✓			T	REV PER AF-6785	9/29/78	[Signature]	54

UNLESS OTHERWISE SPECIFIED DIMENSIONS ARE IN MILLIMETERS TOLERANCES ON DECIMALS ARE ±0.05 ANGLES 1°		CONTRACT NO.		NAME	
MATERIAL	SEE TABLE	DR	[Signature]	4-26-78	AMP INCORPORATED Harrisburg, Pa.
FINISH	SEE TABLE	CHK	[Signature]	7-19-78	
APPROV	[Signature]	APPROV	[Signature]	8-1-78	
DSGN APPD	[Signature]	DSGN APPD	[Signature]	8-1-78	
OTHER APPD		OTHER APPD			
STUD SIZE	M4 #8	WIRE SIZE	0.8-2.0mm <sup>2</sup> [8-14]	FINISH	TIN
				MATERIAL	0.76 BRASS [030]
				PART NO	40517
SIZE	B	CODE IDENT NO	00779	DRAWING NO	40517
SCALE				SHEET	