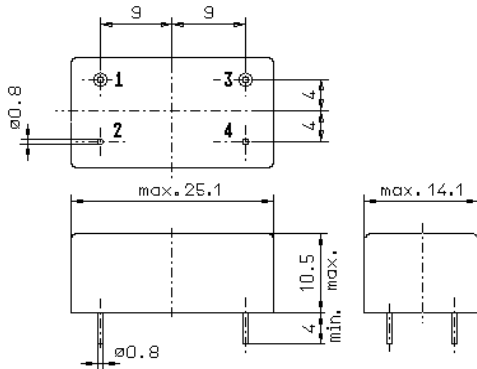


Specification for crystal filter:

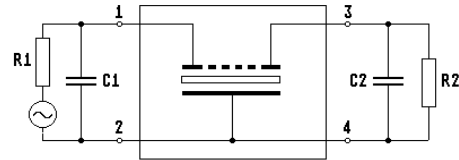
**QF 172.955-3500/07V1**

## 1. General

### 1.1. Package:



GM3.1



- |                                   |                      |
|-----------------------------------|----------------------|
| 1.2. Type name:                   | QF 172.955-3500/07V1 |
| 1.3. Number of poles:             | 4                    |
| 1.4. Operating temperature range: | -20°C to +70°C       |
| 1.5. Operable temperature range:  | -40°C to +85°C       |

## 2. Electric values

- |   |   |
|---|---|
| 2.1. Nominal centre frequency $f_0$ :                                       | 172.955 MHz                                     |
| 2.2. <b>Pass band</b>   |   |
| 2.2.1. Bandwidth between 3 dB - frequencies:                                | $\geq f_0 \pm 20$ kHz                           |
| 2.2.2. Ripple:  | $\leq 2.0$ dB at $f_0 \pm 17.5$ kHz             |
| 2.2.3. Group delay distortion:  | $\leq 25$ $\mu$ s at $f_0 \pm 20$ kHz           |
| 2.2.4. Insertion loss:<br>( measured on smallest attenuation in pass band ) | $\leq 7$ dB                                     |
| 2.3. <b>Stop band</b>   |   |
| 2.3.1. $f_0 \pm 80$ kHz   | $\geq 40$ dB                                    |
| 2.3.2. $f_0 \pm 455$ kHz  | $\geq 55$ dB                                    |
| 2.3.3. Alternate attenuation:   | $\geq 55$ dB                                    |
| 2.3.4. Spurious responses:  | <b><math>\geq 20</math> dB</b>                  |
| 2.4. Terminating impedance ( input and output ):                            | 50 $\Omega$ // 0 pF                             |
| 2.5. Nominal drive level:   | < 0 dBm   |
| 2.6. Maximum allowed drive level:   | 15 dBm  |
| 2.7. Intermodulation  |   |
| frequency 1:  | 173.055   |
| frequency 2:  | 173.155   |
| input power:  | 0 dBm   |
| IM:   | > 58 dB   |
| 3. Marking on the package:  | manufacturer, date code<br>QF 172.955-3500/07V1 |
| 4. Environment conditions:  | Corresponding to Telefilter CF001               |

Edited by: \_\_\_\_\_ date: \_\_\_\_\_

Name: \_\_\_\_\_