

1. PART NO. EXPRESSION :

R C B 2 0 2 3 1 0 0 M Z F
 (a) (b) (c) (d)(e)(f)

- (a) Series code (d) Tolerance code : K = ±10%, M = ±20%
 (b) Dimension code (e) X, Y, Z : Standard part
 (c) Inductance code : 100 = 10uH (f) F : Lead Free

2. CONFIGURATION & DIMENSIONS :

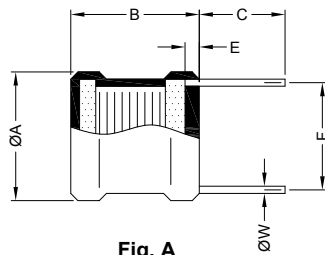


Fig. A

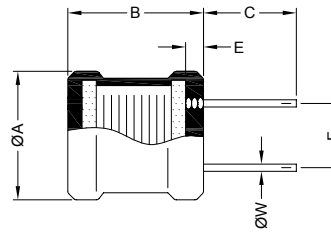
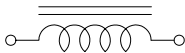


Fig. B

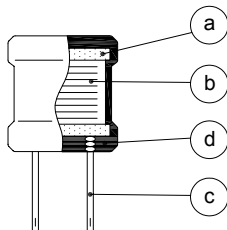
Unit:m/m

ØA	B	C	E
20.0 Max.	23.0 Max.	15.0±5.0	3.0 Max.

3. SCHEMATIC :



4. MATERIALS :



- (a) Core : DR Ferrite Core
 (b) Wire : Enamelled Copper Wire
 (c) Lead : Tinned Copper Wire
 (d) Tube : Shrinkable Tube

5. GENERAL SPECIFICATION :

- a) The inductance drop at rated current is 10% max.
 b) Temp. rise : 45°C at rated current
 c) Storage temp. : -40°C to +125°C
 d) Operating temp. : -25°C to +80°C



RoHS Compliant

NOTE : Specifications subject to change without notice. Please check our website for latest information.

25.04.2008

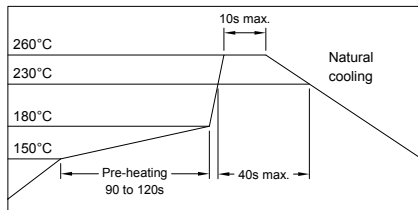


SUPERWORLD ELECTRONICS (S) PTE LTD

6. ELECTRICAL CHARACTERISTICS :

Part No.	Inductance (μ H)	Test Frequency (Hz)	RDC (Ω) Max.	IDC (A) Max.	Dimensions		Fig.
					F m/m	W m/m	
RCB2023100MZF	10 \pm 20%	1V / 1K	0.008	10.0	15.5	1.3	A
RCB2023500KZF	50 \pm 10%	1V / 1K	0.032	5.0	15.5	1.0	A
RCB2023101KZF	100 \pm 10%	1V / 1K	0.060	4.0	15.5	0.9	A
RCB2023251KZF	250 \pm 10%	1V / 1K	0.140	2.5	12.5	1.0	B
RCB2023501KZF	500 \pm 10%	1V / 1K	0.280	1.5	12.5	1.0	B
RCB2023102KZF	1000 \pm 10%	1V / 1K	0.550	1.2	12.5	1.0	B
RCB2023202KZF	2000 \pm 10%	1V / 1K	1.200	0.8	12.5	1.0	B

RECOMMENDED SOLDERING CONDITIONS REFLOW SOLDERINGS



RoHS Compliant

NOTE : Specifications subject to change without notice. Please check our website for latest information.

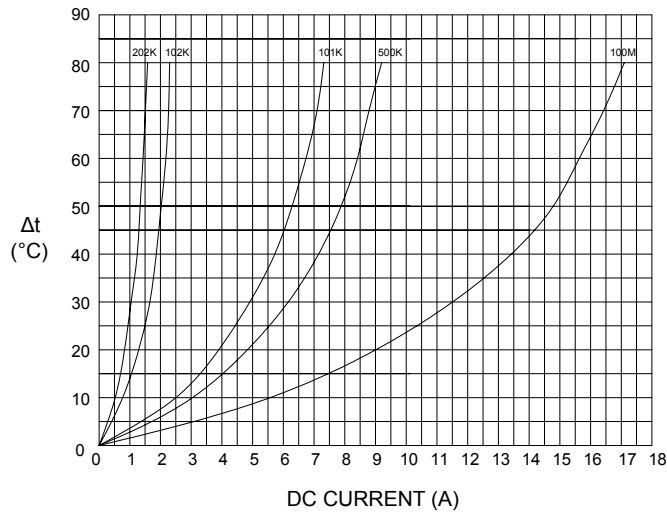
25.04.2008



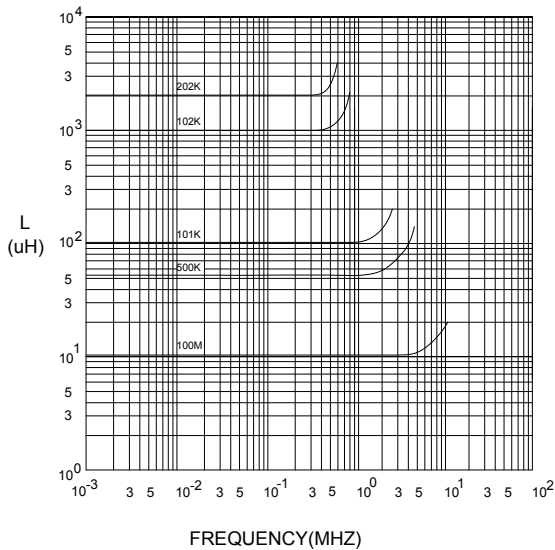
SUPERWORLD ELECTRONICS (S) PTE LTD

7. CHARACTERISTICS CURVES :

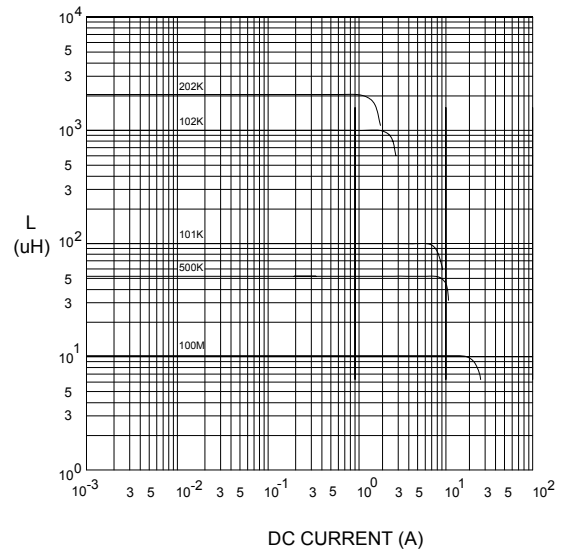
@ TEMP. RISE VS. DC SUPERPOSITION RESPONSE CURVE



@ INDUCTANCE VS. FREQUENCY RESPONSE CURVE



@ INDUCTANCE VS. DC SUPERPOSITION RESPONSE CURVE



NOTE : Specifications subject to change without notice. Please check our website for latest information.



RoHS Compliant

25.04.2008



SUPERWORLD ELECTRONICS (S) PTE LTD

RADIAL CHOKE COIL

RCB2023 SERIES

8. UL CARD :

OBMW2 **November 30, 2000**
Magnet Wire - Component

PACIFIC ELECTRIC WIRE & CABLE (SHENZHEN) CO LTD **E201757**
 607 BAOLONG INDUSTRIAL ESTATE LONGGANG, SHENZHEN
 GUANGDONG CHINA

Mtl Dsg	BC	Coating Type	TC	ANSI Type	TI
UEW/U		Polyurethane	—	—	130
PEW/U		Polyester	—	MW5-C	155°C
PEWH/U		Modified Polyester	—	MW30-C	180
PEW-NY/U		Polyester	Polyamide	MW24-C	155
HAI/U		Polyester(Amide)(Imide)	Polyamideimide	MW35,73	200
UEW-NY/U		Polyurethane	Polyamide	MW80-C	155
				MW28-C	130

Marking: Company name and material designation or marked designation on package or reel, and Recognized Component Mark.

See General Information Preceding These Recognitions

1/3/2001 Underwriters Laboratories Inc. Card 1 of 2

YDPU8 **August 18, 1999**
Tubing Extruded Insulating Certified For Canada - Component

SHENZHEN CHANGBAO SPECIAL PLASTIC PRODUCTS CO LTD **E180908**
 SHENZHEN SCIENCE & INDUSTRY PARK NAN SHAN
 SHENZHEN, GUANGDONG 518057 CHINA

Cat. No.	Max V	Max Temp C	Col Recognized	Max Temp Rated Oil Resistance *C	OFT Rated #
Polyolefin heat shrinkable tubing.					
Changbao 102	600	125	All	—	Yes

#Tubing is considered to comply with the optional OFT flammability requirements only if it is so marked.

Marking: Company name, catalog number and temperature rating in degrees C appears on tubing, tags attached to both ends of the tubing or on the shipping spool label or smallest unit container and the Recognized Component Mark for Canada .

See General Information Preceding These Recognitions
 For use only in equipment where the acceptability of the combination is determined by Underwriters Laboratories Inc.

8/31/1999 Underwriters Laboratories Inc. Card 1 of 1



RoHS Compliant

NOTE : Specifications subject to change without notice. Please check our website for latest information.

25.04.2008



SUPERWORLD ELECTRONICS (S) PTE LTD