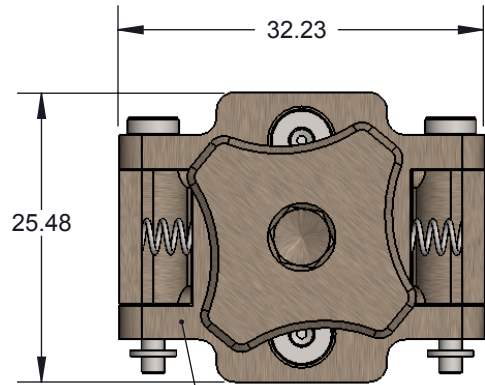
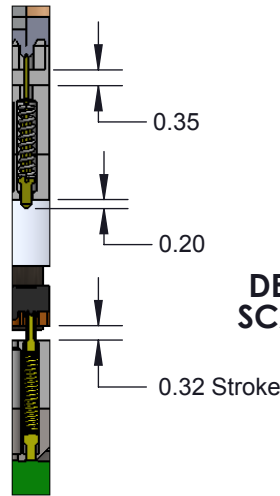


CBT-BGA DIRECT MOUNT, SOLDERLESS SOCKET FOR BURN-IN AND TEST APPLICATIONS



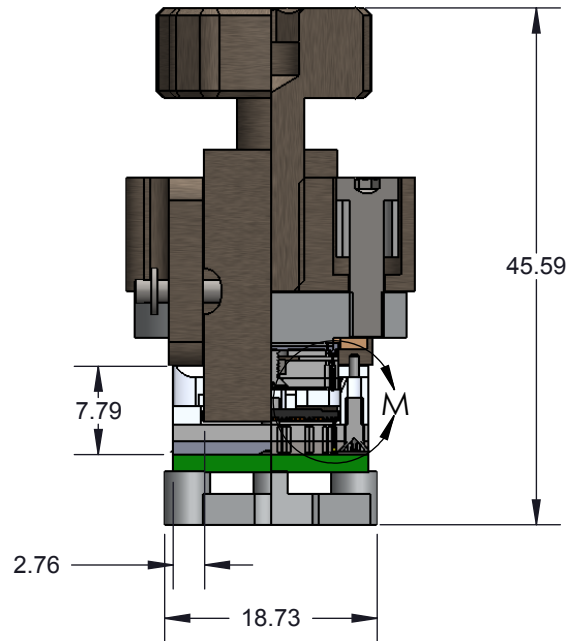
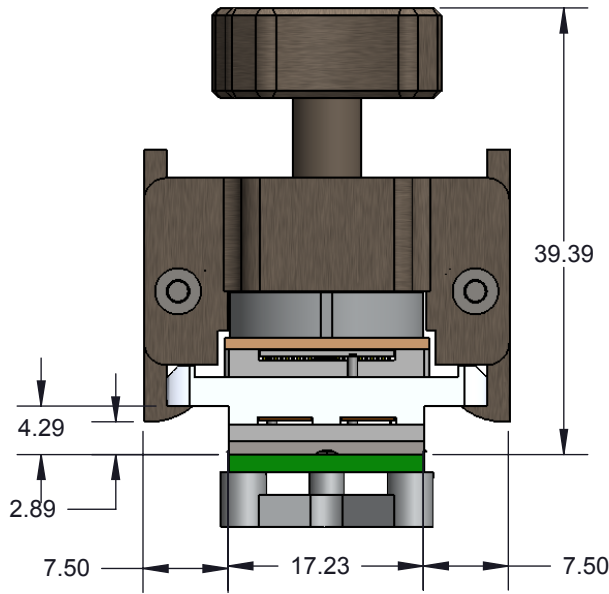
A1 Corner



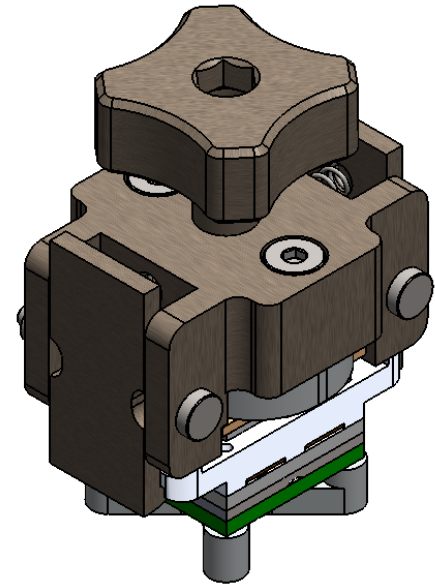
DETAIL M
SCALE 6 : 1

FEATURES:

- Wide temperature range (-55C to +180C)
- High current capability (up to 2-4A)
- Excellent signal integrity at high frequencies
- Low and stable contact resistance for reliable production yield
- Highly compliant to accommodate wide co-planarity variations
- Automated probe manufacturing enables low cost and short lead time




Quarter Section View

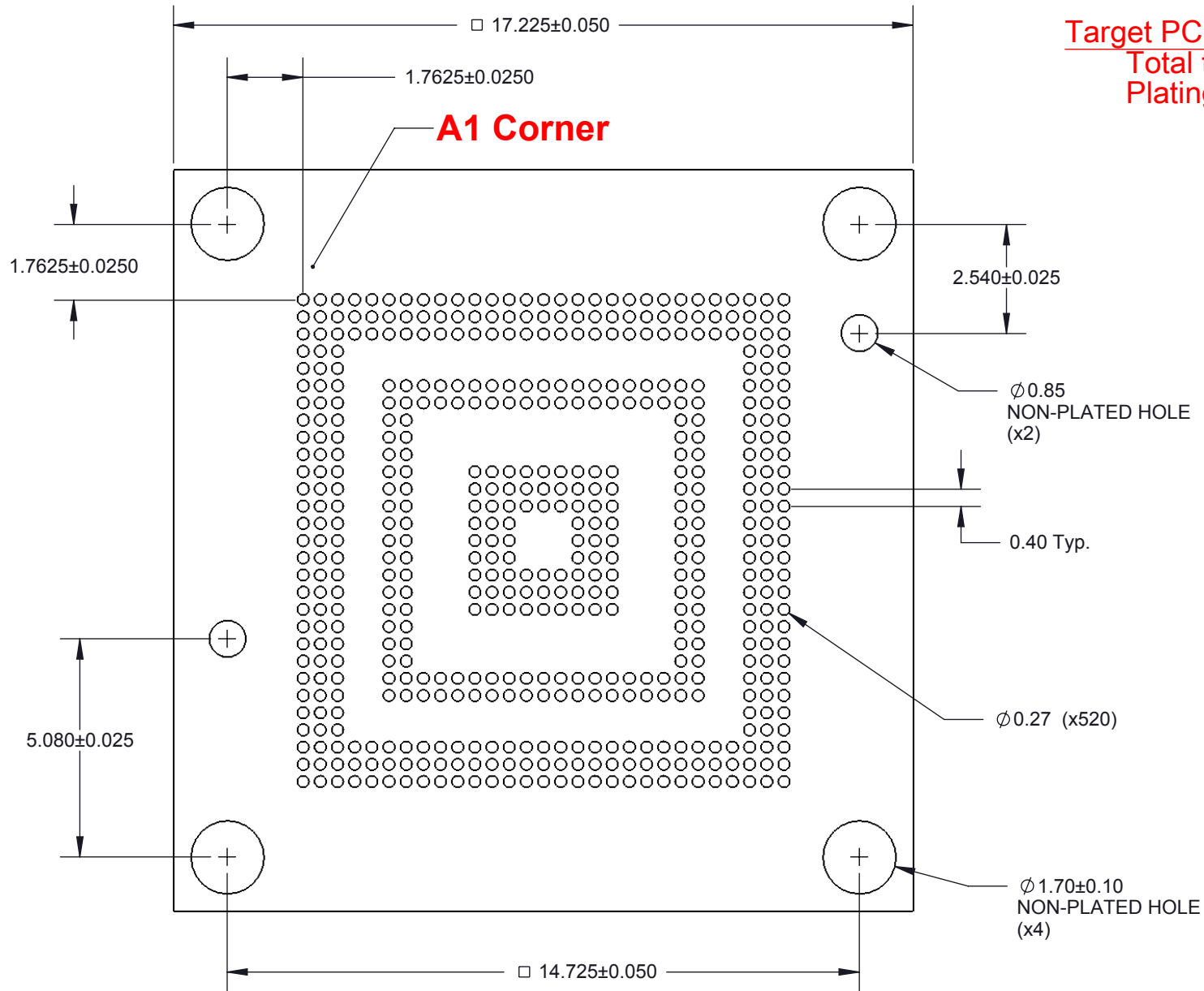


Description: Socket Assy, Insulation Plate

Primary dimension units are millimeters, Secondary dimension units are [inches]. Weight is in grams.

Tolerances: Hole diameters $\pm 0.03\text{mm}$ [$\pm 0.001''$], Pitches (from true position) $\pm 0.025\text{mm}$ [$\pm 0.001''$], substrate thickness tolerance $\pm 10\%$, all other tolerances $\pm 0.13\text{mm}$ [$\pm 0.005''$] unless stated otherwise. Materials and specifications are subject to change without notice.

 <p>CBT-BGA-7006 Drawing Ironwood Electronics, Inc. Tele: (800) 404-0204 www.ironwoodelectronics.com</p>	<p>Material: Material <not specified> Finish: Weight: 42.41</p>	STATUS: Released	SHEET: 1 OF 5	REV. A
		DRAWN BY: M. Raske	SCALE: 3:2	
		FILE: CBT-BGA-7006 Dwg	DATE: 11/27/2012	




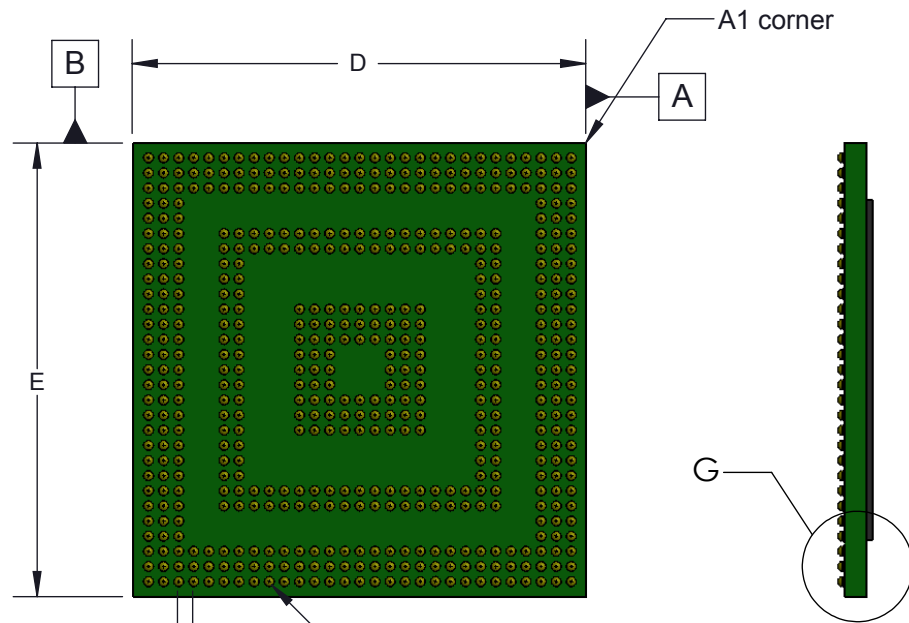
Target PCB Recommendations
 Total thickness: 1.6mm min.
 Plating: Gold or Solder finish

Description: Recommended PCB Layout

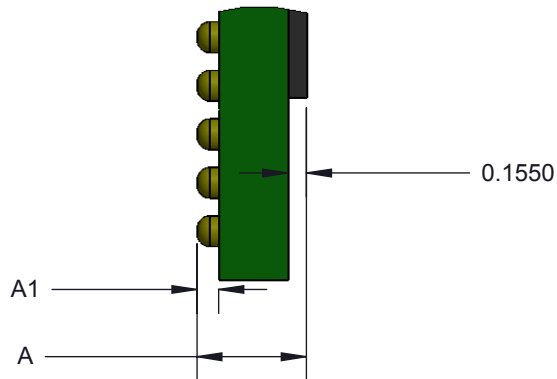
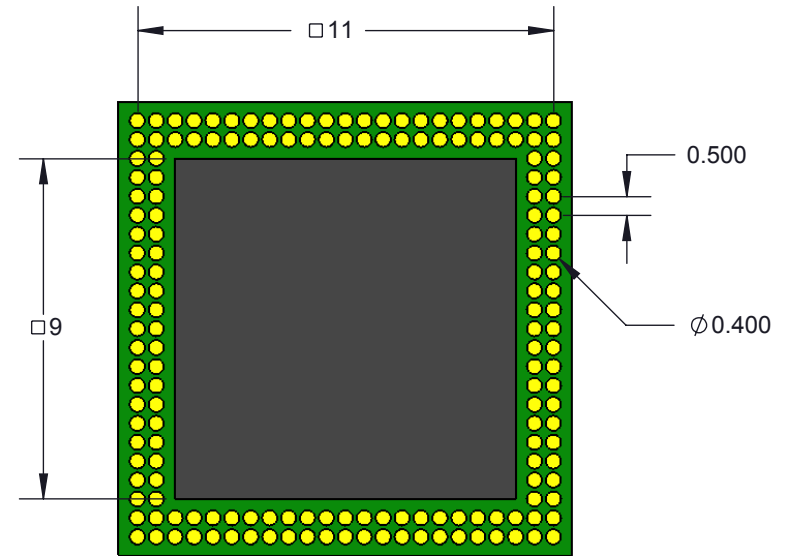
Primary dimension units are millimeters, Secondary dimension units are [inches]. Weight is in grams.

Tolerances: Hole diameters ±0.03mm [±0.001"], Pitches (from true position) ±0.025mm [±0.001"], substrate thickness tolerance ±10%, all other tolerances ±0.13mm [±0.005"] unless stated otherwise. Materials and specifications are subject to change without notice.

 <p>CBT-BGA-7006 Drawing Ironwood Electronics, Inc. Tele: (800) 404-0204 www.ironwoodelectronics.com</p>	<p>Material: Material <not specified> Finish: Weight: 42.41</p>	STATUS: Released	SHEET: 2 OF 5	REV. A
		DRAWN BY: M. Raske	SCALE: 7:1	
		FILE: CBT-BGA-7006 Dwg	DATE: 11/27/2012	



⊕	0.15 (M)	C	A	B
⊕	0.05 (M)	C		



DETAIL G
SCALE 16 : 1


DIM	Minimum	Maximum
A	0.824	0.986
A1	0.13	0.23
b	0.20	0.3
D	12.0 BSC	
E	12.0 BSC	
e	0.4 BSC	
ARRAY	29 X 29	
PIN COUNT	520	

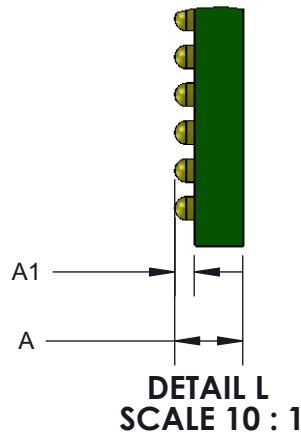
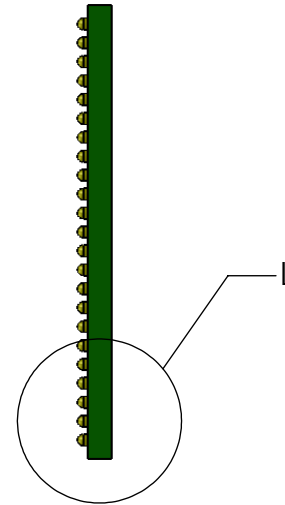
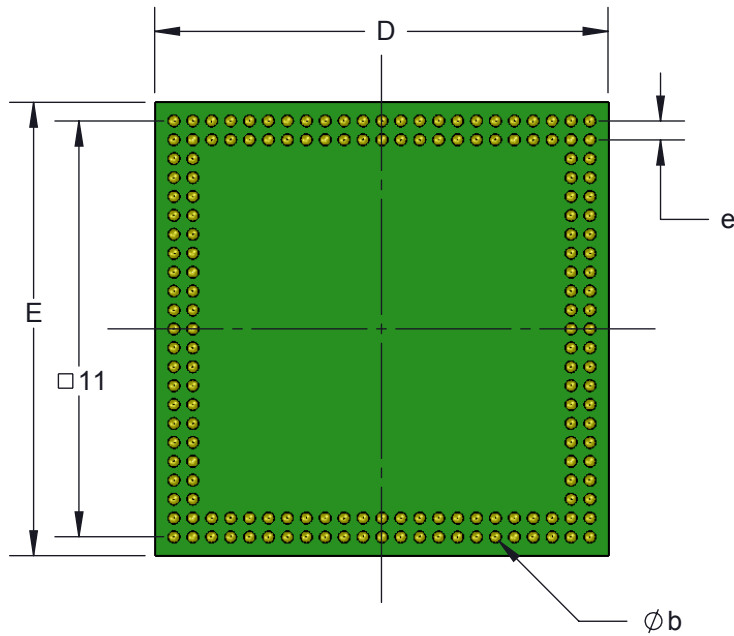
1. Dimensions are in millimeters.
2. Interpret dimensions and tolerances per ASME Y14.5M-1994.
3. Dimension b is measured at the maximum solder ball diameter, parallel to datum plane C.
4. Datum C (seating plane) is defined by the spherical crowns of the solder balls.
5. Parallelism measurement shall exclude any effect of mark on top surface of package.

Description: Compatible BGA

Primary dimension units are millimeters, Secondary dimension units are [inches]. Weight is in grams.

Tolerances: Hole diameters ±0.03mm [±0.001"], Pitches (from true position) ±0.025mm [±0.001"], substrate thickness tolerance ±10%, all other tolerances ±0.13mm [±0.005"] unless stated otherwise. Materials and specifications are subject to change without notice.

 <p>CBT-BGA-7006 Drawing Ironwood Electronics, Inc. Tele: (800) 404-0204 www.ironwoodelectronics.com</p>	<p>Material: Material <not specified> Finish: Weight: 42.41</p>	STATUS: Released	SHEET: 3 OF 5	REV. A
		DRAWN BY: M. Raske	SCALE: 5:1	
		FILE: CBT-BGA-7006 Dwg	DATE: 11/27/2012	




DIM	Minimum	Maximum
A		1.1
A1	0.25	
b	0.33	
D	12.0 BSC	
E	12.0 BSC	
e	0.5 BSC	
ARRAY	23 X 23	
PIN COUNT	168	

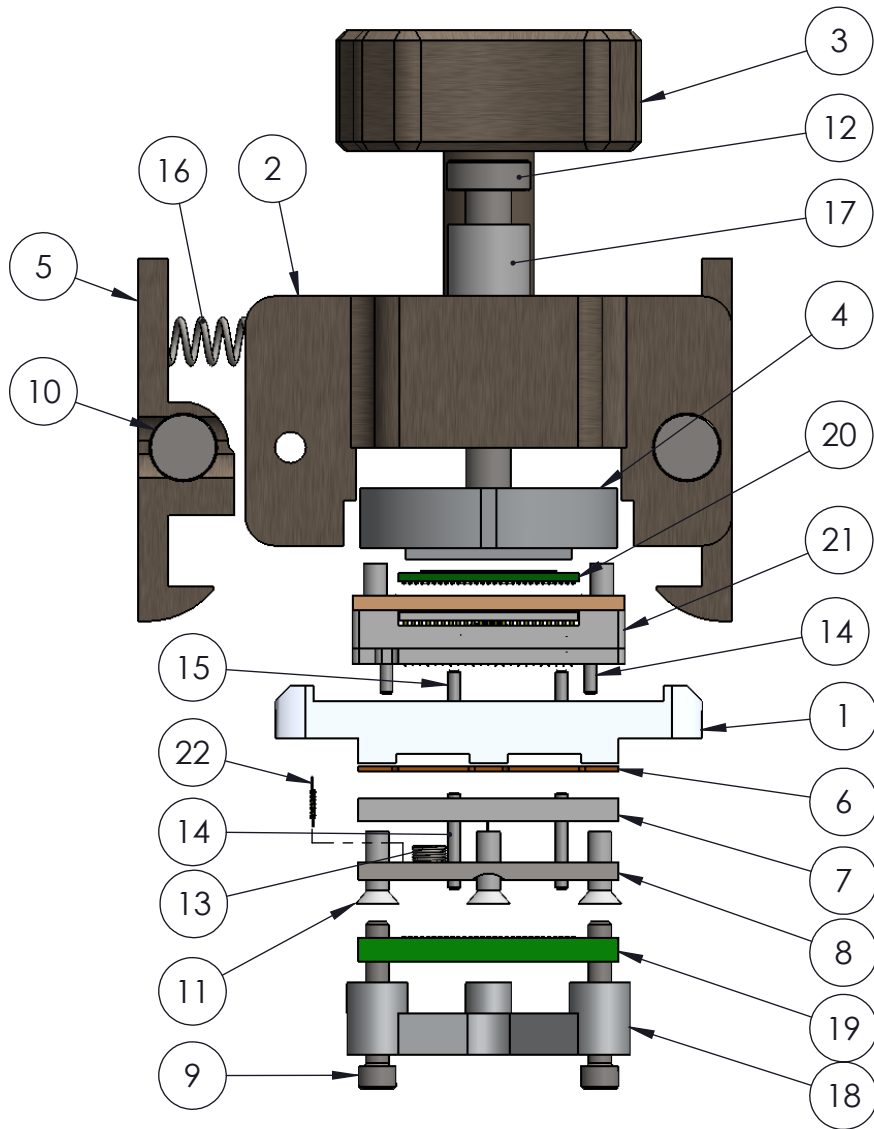
1. Dimensions are in millimeters.
2. Interpret dimensions and tolerances per ASME Y14.5M-1994.
3. Dimension b is measured at the maximum solder ball diameter, parallel to datum plane Z.
4. Datum Z (seating plane) is defined by the spherical crowns of the solder balls.
5. Parallelism measurement shall exclude any effect of mark on top surface of package.

Description: Compatible BGA(2)

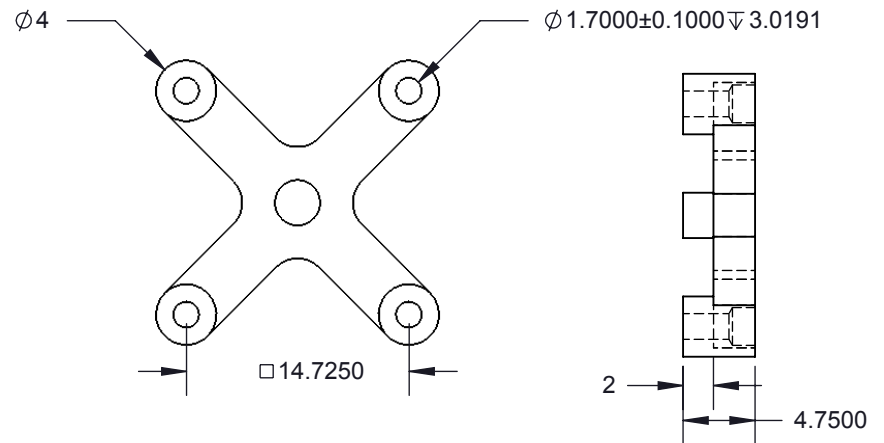
Primary dimension units are millimeters, Secondary dimension units are [inches]. Weight is in grams.

Tolerances: Hole diameters $\pm 0.03\text{mm}$ [$\pm 0.001''$], Pitches (from true position) $\pm 0.025\text{mm}$ [$\pm 0.001''$], substrate thickness tolerance $\pm 10\%$, all other tolerances $\pm 0.13\text{mm}$ [$\pm 0.005''$] unless stated otherwise. Materials and specifications are subject to change without notice.

 CBT-BGA-7006 Drawing Ironwood Electronics, Inc. Tele: (800) 404-0204 www.ironwoodelectronics.com	Material: Material <not specified> Finish: N/A Weight: 0.09	STATUS: Released	SHEET: 4 OF 5	REV. A
		DRAWN BY: M. Raske	SCALE: 5:1	
		FILE: CBT-BGA-7006 Dwg	DATE: 11/27/2012	




ITEM NO.	DESCRIPTION	Material
1	CBT 12mm Skt Base Ni plated (centered)	7075-T6 Aluminum Alloy
2	CBT Dble Latch Lid, Ni Plate 12mm-7mm	7075-T6 Aluminum Alloy
3	Compression screw with fluted knob, Ni plated	7075-T6 Aluminum Alloy
4	CBT compression plate 12mm Custom cutouts	7075-T6 (SN)
5	Latch, Ni plated version of M1435	7075-T6 Aluminum Alloy
6	Floating Guide CBT-BGA 12mmmm, 0.4mm Pitch 29x29 array	Kapton Polyimide
7	CBT-BGA520 Middle Guide 12mm, 0.4mm Pitch 29x29 array	PEEK Ceramic filled
8	Bottom Guide BGA520, 12mm, 29 x 29, 0.4mm pitch	PEEK Ceramic filled
9	#0-80 X .375 LG, SOC HD CAP SCREW, ALLOY STL, BLK OXIDE	Alloy Steel
10	Hinge Pin and Snap Ring, 2mm OD, 19mm long, SS	Stainless Steel (ferritic)
11	Screw, #0-80 X .188", Flat, SS	Stainless Steel (18-8)
12	Screw, M3 x 12mm, Low Head Cap, SS	18-8 Stainless Steel
13	Floating Guide Spring	Alloy Steel (SS)
14	Dowel pin, 1/32" X .25", SS	Chrome Stainless Steel
15	Alignment Pin 1/32" dia. x 1/8" lng	Chrome Stainless Steel
16	Precision Compression Spring, Zinc-Plated Music Wire, 1/2" Length, .12" OD, .016" Wire	Zinc Plated Music Wire
17	Spring Clamshell lid assembly	Steel Music Wire
18	12x12mm, 5 post Clamshell Backing Plate	7075-T6 Aluminum Alloy
19	Target PCB C10074	Material <not specified>
20	BGA chip 520pin with 0.4mm Pitch and 29x29 array	
21	Top Nest Assembly BGA168	
22	SBT Pin, 0.4mm pitch	N/A



Description: Socket Specification

Primary dimension units are millimeters, Secondary dimension units are [inches]. Weight is in grams.

Tolerances: Hole diameters $\pm 0.03\text{mm}$ [$\pm 0.001''$], Pitches (from true position) $\pm 0.025\text{mm}$ [$\pm 0.001''$], substrate thickness tolerance $\pm 10\%$, all other tolerances $\pm 0.13\text{mm}$ [$\pm 0.005''$] unless stated otherwise. Materials and specifications are subject to change without notice.

 CBT-BGA-7006 Drawing Ironwood Electronics, Inc. Tele: (800) 404-0204 www.ironwoodelectronics.com	Material: Material <not specified> Finish: Weight: 42.41	STATUS: Released	SHEET: 5 OF 5	REV. A
		DRAWN BY: M. Raske	SCALE: 2:1	
		FILE: CBT-BGA-7006 Dwg	DATE: 11/27/2012	