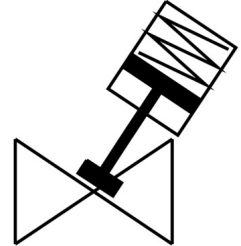


# Angle seat valve VZX-A-B-TS7-3/4"-M2-B1T-12.8-K-46-17-PM

FESTO

Part number: 8111605



## Data sheet

Feature	Value
Structural design	Poppet valve with piston actuator
Actuation type	Pneumatic
Mounting position	Any
Type of mounting	Line installation
Cable connection	Threaded sleeve 3/4 NPT as per ANSI/ASME B 1.20.1
Valve function	2/2
Flow direction	Non-reversible
Medium pressure	0 MPa ... 1.28 MPa
Medium pressure	0 bar ... 12.8 bar
Reset method	Mechanical spring
Type of control	Externally controlled
Pneumatic connection	Internal thread G1/8
Operating pressure	0.5 MPa ... 0.7 MPa
Operating pressure	5 bar ... 7 bar
Operating pressure	72.5 psi ... 101.5 psi
Symbol	00995586
Medium	Vapor Hydraulic fluid based on mineral oil Inert gas Mineral oil Water Filtered compressed air, 200 µm filter mesh Neutral liquids
Flow direction	Under valve seat, for gaseous and liquid media
Control of the medium	On/off mode
Operating medium	Compressed air as per ISO 8573-1:2010 [7:4:4]
Max. viscosity	600 mm <sup>2</sup> /s
Temperature of medium	-10 °C ... 180 °C
Ambient temperature	0 °C ... 60 °C
Flow rate Kv	11.1 m <sup>3</sup> /h
Use in exterior area	Weather-protected locations class C1 based on IEC 60654-1
Note on materials	Contains paint-wetting impairment substances RoHS-compliant
Valve housing material	Brass
Material number, fitting housing	CW724R

<b>Feature</b>	<b>Value</b>
Seals material	FPM
Spindle seal material	PTFE
Seat seal material	PTFE
Product weight	1257 g
Actuator size	46 mm
Stroke	17 mm
Control function	Closed by spring force, NC
Position sensing	With mechanical indicator
Drive housing material	PA-reinforced
Storage temperature	-10 °C ... 60 °C
Degree of protection	IP65 IP67
Piston rod material	High-alloy stainless steel
Cover material	PA-reinforced