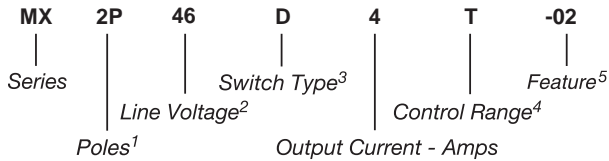


Part Number	Description
MX2P46D4T-02	4A, 460 Vac
MX3P46D4S-02	4A, 460 Vac

Part Number Explanation



NOTES

- 1) Poles: 2P = 2 pole; 3P = 3 pole
- 2) Line Voltage: 46 = 460 Vac
- 3) Switch Type: D = Zero-cross turn-on
- 4) Control Range: T = 15–40 Vdc; S = 12–35 Vdc
- 5) Options: 02 = With LED

MECHANICAL SPECIFICATION

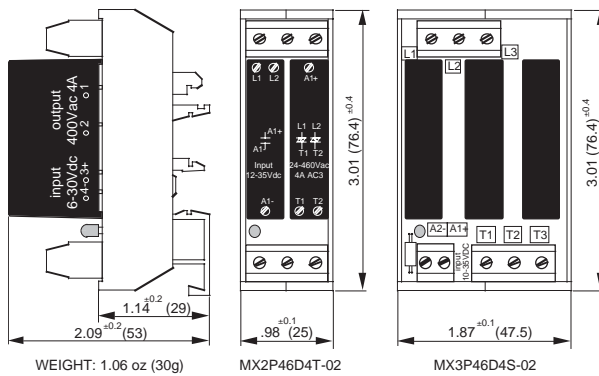


Figure 1 — MX relays; dimensions in inches (mm)

INPUT (CONTROL) SPECIFICATION

	Min	Max	Units
Control Range			
MX2P46D4T-02	15	40	V
MX3P46D4S-02	12	35	V

Input Current Range

MX2P46D4T-02	4.4	17	mA
MX3P46D4S-02	7.5	30	mA

Must Turn-Off Voltage

MX2P46D4T-02	8	V
MX3P46D4S-02	6	V

Input Resistance (Typical)

MX2P46D4T-02	2000	Ohms
MX3P46D4S-02	1000	Ohms



FEATURES/BENEFITS

- New generation of solid-state relays for DIN-rail mounting
- Two- or three-pole output with single control
- Tight zero-cross window for low EMI
- Control visualization by LED
- Integrated clamping voltage
- High immunity to surges

DESCRIPTION

The Series MX relays are a new generation of solid-state relays for DIN-rail fixation. The MX relays are internally wired to provide a common control. The relays are placed on a single DIN-rail fixture, saving designers time and space. The Series MX relays provide a control status LED and internal output protection.

APPLICATIONS

- Interface applications
- Vending machines
- Light/lamp control
- Contactor driver
- Fan speed control
- HVAC controls
- Heating control

BLOCK DIAGRAM

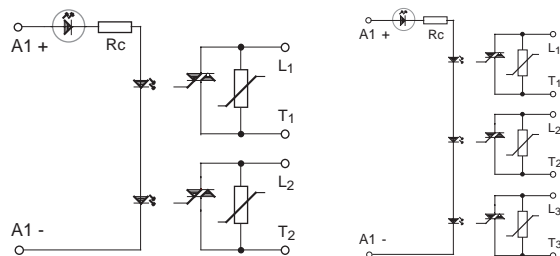


Figure 2a — MX2P relay

Figure 2b — MX3P relay

CONTROL CHARACTERISTICS

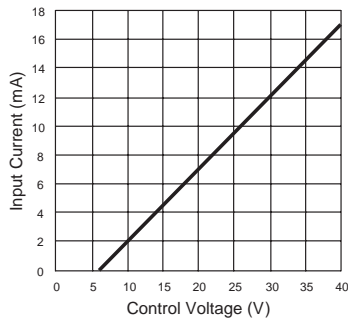


Figure 3a — MX2P relay

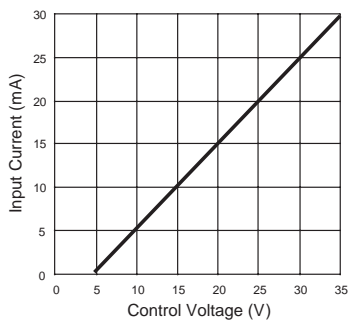


Figure 3b — MX3P relay

TYPICAL APPLICATIONS

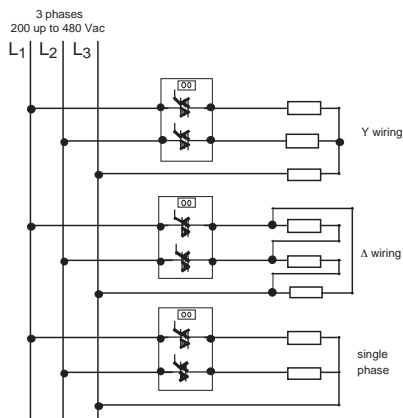


Figure 4a — MX2P relay

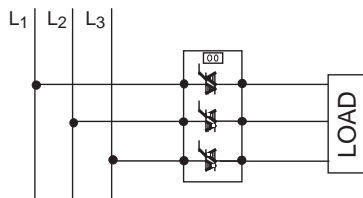


Figure 4b — MX3P relay

OUTPUT (LOAD) SPECIFICATION

	Min	Max	Unit
Operating Range	24	460	Vrms
Peak Voltage		1200	V
Load Current			
Range (Resistive)	.005	4	Arms
Inductive Load Current		2.5	Arms
Maximum Surge Current Rating (Non-Repetitive) (See Figure 5)		120	A
On-State Voltage Drop		1.6	V
Zero-Cross Window		±12	V
Off-State Leakage Current (60Hz)		0.3	mA
Turn-On Time (60Hz)		8.3	ms
Turn-Off Time (60Hz)		8.3	ms
Off-State dv/dt		500	V/μs
Operating Frequency	10	440	Hz
I ² t for match fusing (<8.3ms)		50	A ² S

ENVIRONMENTAL SPECIFICATION

	Min	Max	Unit
Operating Temperature	-40	80	°C
Storage Temperature	-40	150	°C
Input-Output Isolation		4000	Vrms
Input-Output Capacity		3	pF

SURGE CURRENT

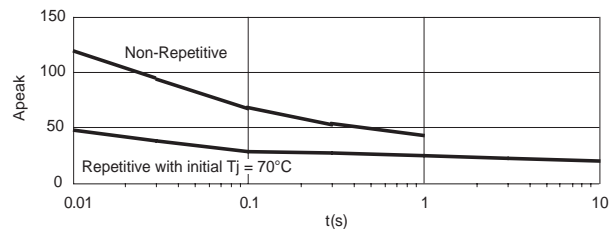


Figure 5 — MX relays

NOTES:

1. Electrical parameters at 25°C unless otherwise specified.
2. For 800Hz applications, contact factory.
3. For additional/custom options, contact factory.