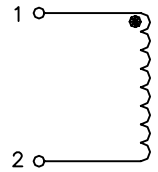


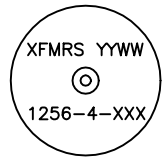
XFRL-1256-4 SERIES INDUCTORS

1. OCL drop 5% Typ at Isat
2. Temp Rise of 40°C Typ at Irated
3. Inductance $\pm 10\%$ measured at 1KHz, values below 10uH $\pm 20\%$
4. Leads for PC mounting tinned to within 1/16" of body
5. Custom values available upon request
6. Coils wrapped with sleeving UL-VW-1 rated
7. Center hole for mechanical mounting
8. 1000VAC Hypot (Wdg to Core through Sleeve)
9. DCR measured @20°C
10. Spacer available at additional cost to facilitate PC board washing
11. Operating Temp -40°C to +85°C

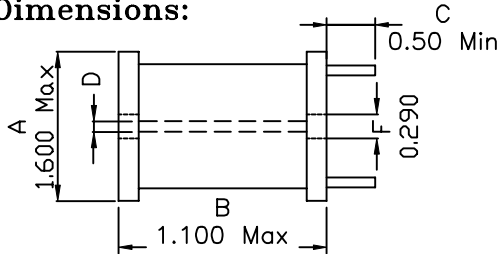
Schematic:



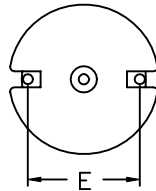
Mechanical Dimensions:



TOP VIEW



D: Clearance Hole for
8/32 Screw With Washer



BOTTOM VIEW

TOLERANCES:

.xxx ± 0.010

Dimensions in INCH

Part Number	INDUCTANCE ³ (uH)	DCR ⁹ Ohms Max	Isat ¹ (A)	Irated ² (A)	Dimension E Typ
XFRL-1256-4-1.8	1.8	0.002	150.0	27.0	1.110
XFRL-1256-4-2.2	2.2	0.002	150.0	27.0	1.110
XFRL-1256-4-2.7	2.7	0.003	115.0	27.0	1.110
XFRL-1256-4-3.3	3.3	0.003	115.0	27.0	1.110
XFRL-1256-4-3.9	3.9	0.003	95.0	27.0	1.110
XFRL-1256-4-4.7	4.7	0.003	95.0	27.0	1.110
XFRL-1256-4-5.6	5.6	0.004	79.0	27.0	1.110
XFRL-1256-4-6.8	6.8	0.004	79.0	27.0	1.110
XFRL-1256-4-8.2	8.2	0.004	69.0	27.0	1.110
XFRL-1256-4-10	10.0	0.005	61.0	27.0	1.110
XFRL-1256-4-12	12.0	0.005	55.0	27.0	1.110
XFRL-1256-4-15	15.0	0.006	49.0	27.0	1.110
XFRL-1256-4-18	18.0	0.008	41.0	27.0	1.110
XFRL-1256-4-22	22.0	0.009	38.0	21.0	1.110
XFRL-1256-4-27	27.0	0.010	36.0	21.0	1.150
XFRL-1256-4-33	33.0	0.011	31.0	21.0	1.150
XFRL-1256-4-39	39.0	0.012	28.0	21.0	1.150
XFRL-1256-4-47	47.0	0.018	27.0	14.4	1.140
XFRL-1256-4-56	56.0	0.019	26.1	14.4	1.140
XFRL-1256-4-68	68.0	0.021	24.4	14.4	1.140
XFRL-1256-4-82	82.0	0.023	22.4	14.4	1.140
XFRL-1256-4-100	100.0	0.025	20.0	14.4	1.140
XFRL-1256-4-120	120.0	0.028	18.0	14.4	1.187
XFRL-1256-4-150	150.0	0.040	16.4	11.4	1.125
XFRL-1256-4-180	180.0	0.045	14.6	11.4	1.125
XFRL-1256-4-220	220.0	0.050	13.2	11.4	1.125
XFRL-1256-4-270	270.0	0.056	11.8	11.4	1.156
XFRL-1256-4-330	330.0	0.074	11.4	11.4	1.125
XFRL-1256-4-390	390.0	0.082	10.1	9.0	1.187
XFRL-1256-4-470	470.0	0.114	9.2	7.2	1.125
XFRL-1256-4-560	560.0	0.125	8.3	7.2	1.125
XFRL-1256-4-680	680.0	0.139	7.6	7.2	1.125
XFRL-1256-4-820	820.0	0.154	6.8	7.2	1.187
XFRL-1256-4-1000	1000.0	0.216	6.2	5.5	1.062
XFRL-1256-4-1200	1200.0	0.232	5.7	5.5	1.156
XFRL-1256-4-1500	1500.0	0.324	5.1	4.5	1.156
XFRL-1256-4-1800	1800.0	0.360	4.6	4.5	1.156
XFRL-1256-4-2200	2200.0	0.494	4.2	4.0	1.062
XFRL-1256-4-2700	2700.0	0.555	3.8	4.0	1.062
XFRL-1256-4-3300	3300.0	0.773	3.4	2.8	1.062
XFRL-1256-4-3900	3900.0	0.845	3.1	2.8	1.125
XFRL-1256-4-4700	4700.0	1.140	2.9	2.0	1.110
XFRL-1256-4-5600	5600.0	1.600	2.5	2.0	1.110
XFRL-1256-4-6800	6800.0	1.760	2.3	1.6	1.110
XFRL-1256-4-8200	8200.0	1.950	2.0	1.6	1.160
XFRL-1256-4-10000	10000.0	2.760	1.8	1.3	1.160
XFRL-1256-4-12000	12000.0	3.040	1.7	1.3	1.160
XFRL-1256-4-15000	15000.0	3.390	1.5	1.3	1.160