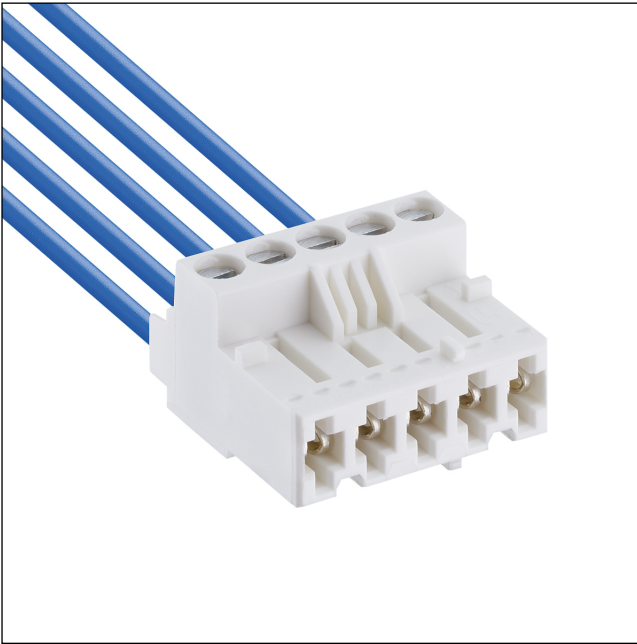


36

3611

RAST 5 connectors, pitch 5.0 mm



RAST 5 connector for indirect mating, with screw terminal, with lift clamp with protection against misplacing, with interior locking, consecutive placement without loss of pitch

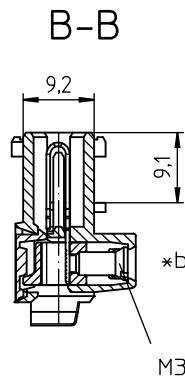
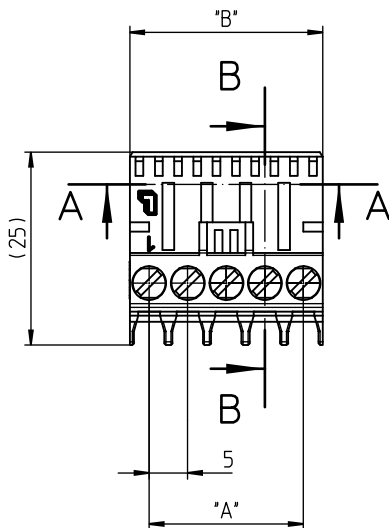
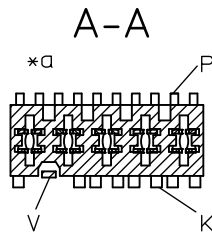
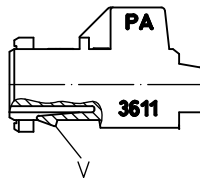
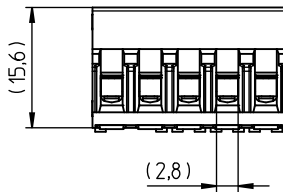
---

Approvals:



36

3611



\*a K = keying  
P = positioning  
V = lock

\*b all screw clamps of the connector to be tightened with the indicated torque

### Environmental conditions

Temperature range -40 °C/+125 °C (3611)  
-40 °C/+130 °C (3611 M08)<sup>1</sup>

<sup>1</sup> upper limit temperature (insulating body) RTI (electrical) of the UL Yellow Card

### Materials

Insulating body PA GF, V-2 according to UL94 – 3611  
PA GF, V-0 according to UL94 – 3611 M08<sup>1</sup>  
Contact spring CuSn, tin-plated  
Clamp CuZn, nickel-plated  
Screw steel, zinc-plated and chromatiert

<sup>1</sup> M08: component glow wire resistant (GWT 750 °C), testing acc. to IEC 60695-2-11, assessment acc. to IEC 60335-1 (flame < 2 s)

### Mechanical data

Insertion force/contact ≤ 4,0 N  
Withdrawal force/contact ≥ 1,0 N  
Tightening torque screw 0,5 Nm  
Keying proposals at [www.lumberg.com](http://www.lumberg.com) 

### Connectable conductors for screw clamp

Section stranded wire 0,14–2,5 mm<sup>2</sup> (AWG 26–14)  
Section stranded wire with sleeve 0,25–2,5 mm<sup>2</sup> (AWG 24–14)  
Section solid wire 0,14–4,0 mm<sup>2</sup> (AWG 26–12)  
Stripping length 8 ± 1 mm

### Electrical data (at T<sub>amb</sub> 20 °C)

Contact resistance ≤ 5 mΩ  
Rated current 10 A (T<sub>sub>U</sub> > 70 °C)  
Rated voltage 630 V AC (VDE)/250 V DC (UL, CSA) – 3611  
320 V AC (VDE)/250 V DC (UL, CSA) – 3611 M08  
Material group I (IEC)/0 (UL) (CTI ≥ 600) – 3611  
IIIa (IEC)/2 (UL) (CTI ≥ 250) – 3611 M08  
Creepage distance 3,4 mm  
Clearance 3,4 mm  
Insulation resistance > 10 GΩ</sub>

---

**Associated products**

Counterparts

|                          |                          |                          |
|--------------------------|--------------------------|--------------------------|
| <a href="#">3618</a>     | <a href="#">3618-1</a>   | <a href="#">3618-2</a>   |
| <a href="#">3618-3</a>   | <a href="#">361899</a>   | <a href="#">361899-1</a> |
| <a href="#">361899-2</a> | <a href="#">361899-3</a> | <a href="#">3641</a>     |
| <a href="#">3642</a>     | <a href="#">364299</a>   | <a href="#">3643</a>     |
| <a href="#">364399</a>   | <a href="#">3644</a>     | <a href="#">364499</a>   |
| <a href="#">3645</a>     | <a href="#">364599</a>   | <a href="#">3647</a>     |
| <a href="#">3648</a>     | <a href="#">3649</a>     | <a href="#">3671</a>     |
| <a href="#">367199</a>   | <a href="#">3672</a>     | <a href="#">367299</a>   |
| <a href="#">3673</a>     | <a href="#">367399</a>   | <a href="#">3674</a>     |
| <a href="#">367499</a>   | <a href="#">3676</a>     | <a href="#">3677</a>     |
| <a href="#">3678</a>     | <a href="#">3679</a>     | <a href="#">3680</a>     |
| <a href="#">3683</a>     |                          |                          |

36

3611

| Designation | Pole Number | PU (Pieces) | MDQ (Pieces) | Dimensions |        |
|-------------|-------------|-------------|--------------|------------|--------|
|             |             |             |              | A (mm)     | B (mm) |
| 3611 02     | 2           | 200         | 1000         | 5          | 9.9    |
| 3611 03     | 3           | 200         | 1000         | 10         | 14.9   |
| 3611 04     | 4           | 200         | 1000         | 15         | 19.9   |
| 3611 05     | 5           | 200         | 1000         | 20         | 24.9   |
| 3611 06     | 6           | 200         | 1000         | 25         | 29.9   |
| 3611 07     | 7           | 100         | 1000         | 30         | 34.9   |

Designation to be completed by further details (e.g. for keying, color or material options).

**Packaging:**

in bulk, in a cardboard box