

PLEASE CHECK WWW.MOLEX.COM FOR LATEST PART INFORMATION

Part Number: [0355271015](#)
Status: **Active**
Description: 6.35mm (.250") Pitch, Wire-to-Wire Housing, Female 10 Circuits

Documents:

[Drawing \(PDF\)](#) [RoHS Certificate of Compliance \(PDF\)](#)
[Product Specification PS-35527-001 \(PDF\)](#)

General

Product Family	Crimp Housings
Series	35527
Product Name	N/A

Physical

Breakaway	No
Circuits (maximum)	10
Color - Resin	Natural
Gender	Receptacle
Glow-Wire Compliant	No
Keying to Mating Part	N/A
Lock to Mating Part	None
Material - Resin	Polypropylene
Number of Rows	2
Packaging Type	Bag
Panel Mount	No
Pitch - Mating Interface (in)	0.236 In, 0.386 In
Pitch - Mating Interface (mm)	6.00 mm, 9.80 mm
Pitch - Term. Interface (in)	0.236 In, 0.386 In
Pitch - Term. Interface (mm)	6.00 mm, 9.80 mm
Polarized to Mating Part	Yes
Ports	1
Stackable	No
Temperature Range - Operating	-40°C to +120°C

Material Info

Reference - Drawing Numbers

Product Specification	PS-35527-001
Sales Drawing	SD-35527-001

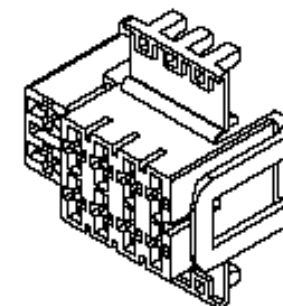


image - Reference only

Series

EU RoHS

**ELV and RoHS
Compliant**
REACH SVHC
 Not Reviewed
**Halogen-Free
Status**
 Not Reviewed

China RoHS



**Need more information on product
environmental compliance?**

Email productcompliance@molex.com
 For a multiple part number RoHS Certificate of
 Compliance, [click here](#)

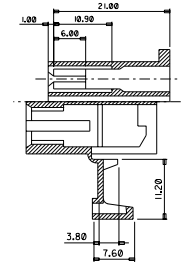
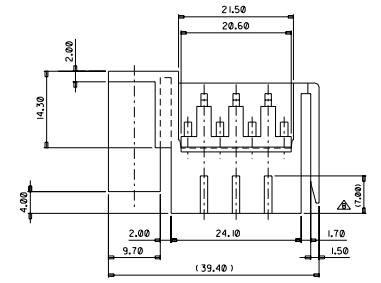
Please visit the [Contact Us](#) section for any
 non-product compliance questions.

Search Parts in this Series
[35527Series](#)

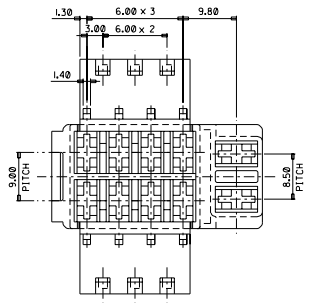
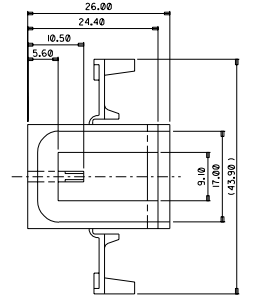
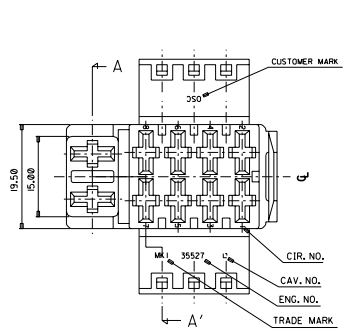
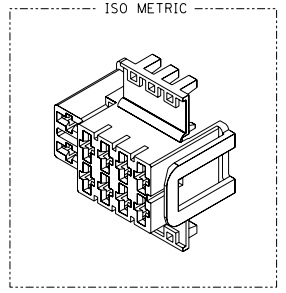
Use With
[90021](#)

PLEASE CHECK WWW.MOLEX.COM FOR LATEST PART INFORMATION

DWG. NO. SD-35527-001
 PROJECT NO.
 SIMILAR ITEM
 DO NOT SCALE DRAWING DIMENSION IN METRIC



SECTION: A-A'



NOTE

1. MATERIAL : P.P , COLOR : GRAY
2. APPLICABLE TERMINAL(.250 TYPE) : 90021-***

REVISED EC. NO. XPR002-0/41 DRAWING. M.K.M. 02/05/07 CHK. H.C. RHO APPROV. W.LEE	DESCRIPTION MAJOR CRITICAL	GENERAL TOLERANCES: (UNLESS SPECIFIED):		SCALE	DESIGN UNITS	THIRD ANGLE PROJECTION	DIMENSIONS:			SHT	REV
		4 PLACES	±0.	±.	<input checked="" type="checkbox"/> mm		<input type="checkbox"/> INCH	<input type="checkbox"/> mm	<input type="checkbox"/> INCH	<input type="checkbox"/> mm ONLY	REVISE ON CAD ONLY
C	REV	3 PLACES	±0.	±.	DRAWN BY & DATE B.C.YOON 97/04/04	TITLE: .250 REC. HSG 10P					
		2 PLACES	±0.	±.	CHECKED BY & DATE B.K.CHOI 97/04/04						
		1 PLACE	±0.3	±.	APPROVED BY & DATE C.W.LEE 97/04/04	MOLEX INCORPORATED					
		ANGULAR: ± 1°		CAD FILENAME	MATERIAL NO.	DRAWING NO.	SHEET NO.				
				SD35527.DGN	SEE TABLE	SD-35527-001	1/1				
		DRAFT WHERE APPLICABLE MUST REMAIN WITHIN DIMENSIONS				THIS DRAWING CONTAINS INFORMATION THAT IS PROPRIETARY TO MOLEX INCORPORATED AND SHOULD NOT BE USED WITHOUT WRITTEN PERMISSION.				SIZE B	

