



**MICROCHIP**

---

**Total Endurance™ v5.00**  
**Quick Start Guide**

---

**Note the following details of the code protection feature on Microchip devices:**

- Microchip products meet the specification contained in their particular Microchip Data Sheet.
- Microchip believes that its family of products is one of the most secure families of its kind on the market today, when used in the intended manner and under normal conditions.
- There are dishonest and possibly illegal methods used to breach the code protection feature. All of these methods, to our knowledge, require using the Microchip products in a manner outside the operating specifications contained in Microchip's Data Sheets. Most likely, the person doing so is engaged in theft of intellectual property.
- Microchip is willing to work with the customer who is concerned about the integrity of their code.
- Neither Microchip nor any other semiconductor manufacturer can guarantee the security of their code. Code protection does not mean that we are guaranteeing the product as "unbreakable."

Code protection is constantly evolving. We at Microchip are committed to continuously improving the code protection features of our products. Attempts to break Microchip's code protection feature may be a violation of the Digital Millennium Copyright Act. If such acts allow unauthorized access to your software or other copyrighted work, you may have a right to sue for relief under that Act.

---

Information contained in this publication regarding device applications and the like is provided only for your convenience and may be superseded by updates. It is your responsibility to ensure that your application meets with your specifications. MICROCHIP MAKES NO REPRESENTATIONS OR WARRANTIES OF ANY KIND WHETHER EXPRESS OR IMPLIED, WRITTEN OR ORAL, STATUTORY OR OTHERWISE, RELATED TO THE INFORMATION, INCLUDING BUT NOT LIMITED TO ITS CONDITION, QUALITY, PERFORMANCE, MERCHANTABILITY OR FITNESS FOR PURPOSE. Microchip disclaims all liability arising from this information and its use. Use of Microchip devices in life support and/or safety applications is entirely at the buyer's risk, and the buyer agrees to defend, indemnify and hold harmless Microchip from any and all damages, claims, suits, or expenses resulting from such use. No licenses are conveyed, implicitly or otherwise, under any Microchip intellectual property rights.

**Trademarks**

The Microchip name and logo, the Microchip logo, dsPIC, KEELOQ, KEELOQ logo, MPLAB, PIC, PICmicro, PICSTART, PIC<sup>32</sup> logo, rPIC and UNI/O are registered trademarks of Microchip Technology Incorporated in the U.S.A. and other countries.

FilterLab, Hampshire, HI-TECH C, Linear Active Thermistor, MXDEV, MXLAB, SEEVAL and The Embedded Control Solutions Company are registered trademarks of Microchip Technology Incorporated in the U.S.A.

Analog-for-the-Digital Age, Application Maestro, CodeGuard, dsPICDEM, dsPICDEM.net, dsPICworks, dsSPEAK, ECAN, ECONOMONITOR, FanSense, HI-TIDE, In-Circuit Serial Programming, ICSP, Mindi, MiWi, MPASM, MPLAB Certified logo, MPLIB, MPLINK, mTouch, Omniscient Code Generation, PICC, PICC-18, PICDEM, PICDEM.net, PICKit, PICtail, REAL ICE, rLAB, Select Mode, Total Endurance, TSHARC, UniWinDriver, WiperLock and ZENA are trademarks of Microchip Technology Incorporated in the U.S.A. and other countries.

SQTP is a service mark of Microchip Technology Incorporated in the U.S.A.

All other trademarks mentioned herein are property of their respective companies.

© 2011, Microchip Technology Incorporated, Printed in the U.S.A., All Rights Reserved.

 Printed on recycled paper.

ISBN: 978-1-61341-131-5

*Microchip received ISO/TS-16949:2002 certification for its worldwide headquarters, design and wafer fabrication facilities in Chandler and Tempe, Arizona; Gresham, Oregon and design centers in California and India. The Company's quality system processes and procedures are for its PIC<sup>®</sup> MCUs and dsPIC<sup>®</sup> DSCs, KEELOQ<sup>®</sup> code hopping devices, Serial EEPROMs, microperipherals, nonvolatile memory and analog products. In addition, Microchip's quality system for the design and manufacture of development systems is ISO 9001:2000 certified.*

**QUALITY MANAGEMENT SYSTEM  
CERTIFIED BY DNV  
== ISO/TS 16949:2002 ==**

---

---

**Total Endurance™ v5.00 Quick Start Guide**

---

---

**INTRODUCTION**

Total Endurance software is a simple-to-use, yet powerful, software tool to help system designers determine the endurance of Microchip EEPROMs in a given application. The software will calculate the expected endurance based on the conditions entered by the user.

**INSTALLING THE SOFTWARE**

You can find Total Endurance v5.00 on Microchip's web site, [www.microchip.com](http://www.microchip.com). When you have downloaded Total Endurance v5.00 Install.exe, simply launch the setup file and follow the instructions.

**USING TOTAL ENDURANCE**

There are four main parts of the screen: (See screen sample)

**Options**

The options area allows you to choose whether or not you want to calculate endurance up to a specific period of time ("Application life") or if you want the Total Endurance software to calculate how long it will take to get to a specific failure rate (PPM). If it takes longer than 41 years to get to the failure rate you have specified, then the program will calculate out to 41 years and then display the actual failure rate at that time.

You can also select the x-axis display of the graph – either "Cycles" or "Time".

**Endurance Parameters**

Here the parameters are entered that the Total Endurance software will use to calculate the expected failure rate. Select the device you want using the "Product Family" and "Device Selection" drop-down menus.

Next, select the operating voltage of your application (the VDD supply level of the EEPROM), and the ambient temperature of the application (temperature has a strong effect on endurance).

Depending on what you selected in options, you can enter the application life (or PPM level) you need the Total Endurance software to calculate.

Select the String length (number of bytes being written during the Write command, use 1 for byte writes). And finally, the number of times those bytes are written per day.

**Numerical Results**

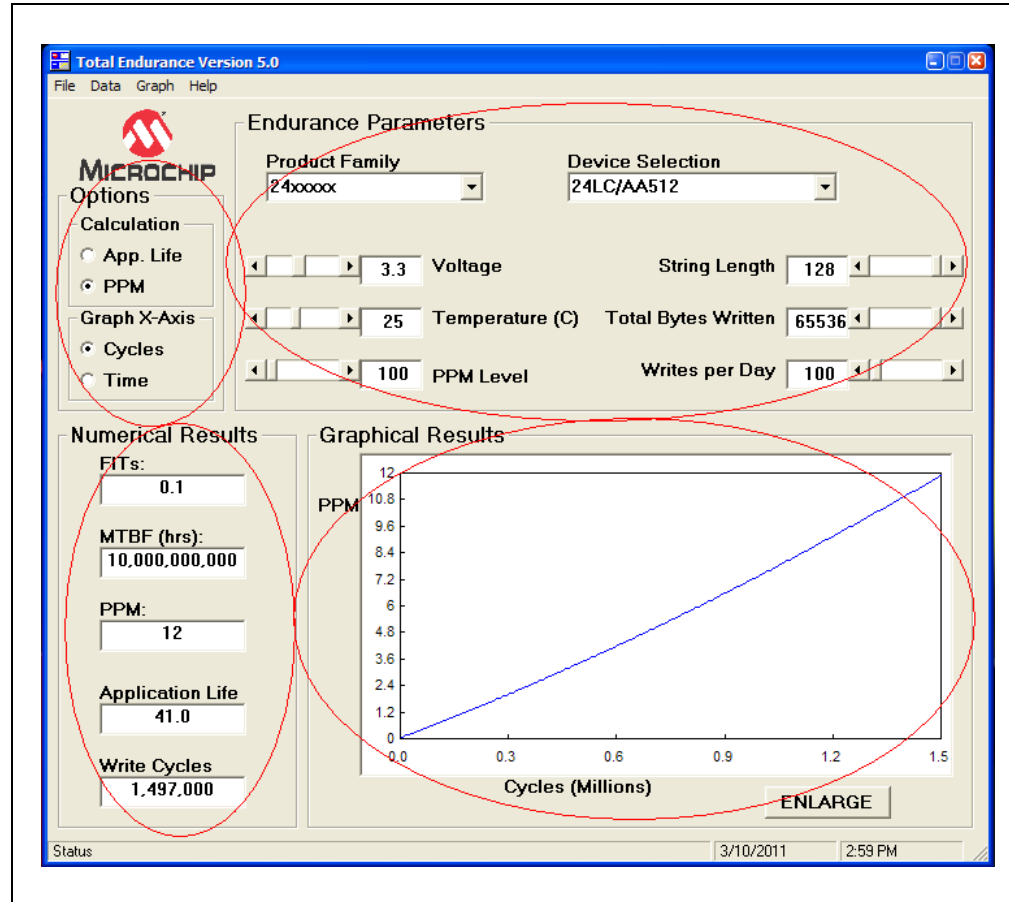
This area provides the results of your calculation in numerical form. It shows the failure rate in FITs (Failure in Time) and PPM (Parts Per Million), calculates the MTBF (Mean Time Between Failure), gives the life of the application (calculated if you have asked Total Endurance software to calculate up to a certain PPM failure rate), and calculates the number of write cycles you are performing over the life of your application.

# Total Endurance™ Quick Start Guide

## Graphic Results

This shows the failure rate over time (or cycles) up to the lifetime (calculated or entered) of the application. The **Enlarge** button displays a full-screen version of the graph.

## FAILURE RATE OVER TIME



## ARCHITECTURE

Microchip employs two different array architectures in its EEPROM devices. The difference between the two involves what happens during the write cycle when less than a full page is written. To the end user, this change does not affect communication; it only affects how endurance is specified.

### Byte Architecture

Microchip's old EEPROM architecture was a byte architecture that allowed the user to do a true byte write where only the byte(s) being addressed were modified during the write cycle. The number of bytes being programmed in this architecture could be anywhere from one single byte to an entire page.

## Page Architecture

Microchip's new EEPROM architecture is page based and forces the entire page to undergo a write cycle even when individual bytes are addressed. This design supports pseudo byte writes (or multiple bytes of less than a full page) so the new devices can be used as a replacement for older devices with no code changes required. All writes to a page now refresh all of the bytes of the page whether the specific bytes are addressed or not.

With the new page architecture, the entire page is read into latches at the beginning of the Write command. As data is received, it is loaded into the appropriate latches to replace the old data. At the end of the Write command, the entire page is written using the data in the latches. This is essentially a read-modify-write operation on the entire page.

Because the entire page endures a write cycle during each write operation, endurance is specified per page.

## How does this affect me?

Most applications should not encounter any issues when moving between these two architectures due to the high endurance of Microchip EEPROM technology.

Microchip recommends that byte writes be minimized, and for the MCU to buffer the data and performs either a whole page write, or writes as many bytes in one Write command as possible.

A side benefit of performing a page write vs. a multiple of individual byte writes is a reduction in average power consumption; also the total system write time is reduced by doing fewer total writes. AN1028, "*Recommended Usage of Microchip I<sup>2</sup>C™ Serial EEPROM Devices*," covers a number of examples showing the code efficiencies and reduction in time taken between writing individual bytes vs. an entire page.

The data below was collected on actual Microchip devices. It shows that the endurance is very high for Microchip serial EEPROMS and that most users should not have any endurance concerns.

# Total Endurance™ Quick Start Guide

---

NOTES:

# Total Endurance™ Quick Start Guide

---

---

NOTES:



# MICROCHIP

## Worldwide Sales and Service

### AMERICAS

**Corporate Office**  
2355 West Chandler Blvd.  
Chandler, AZ 85224-6199  
Tel: 480-792-7200  
Fax: 480-792-7277  
Technical Support:  
<http://www.microchip.com/support>  
Web Address:  
[www.microchip.com](http://www.microchip.com)

**Atlanta**  
Duluth, GA  
Tel: 678-957-9614  
Fax: 678-957-1455

**Boston**  
Westborough, MA  
Tel: 774-760-0087  
Fax: 774-760-0088

**Chicago**  
Itasca, IL  
Tel: 630-285-0071  
Fax: 630-285-0075

**Cleveland**  
Independence, OH  
Tel: 216-447-0464  
Fax: 216-447-0643

**Dallas**  
Addison, TX  
Tel: 972-818-7423  
Fax: 972-818-2924

**Detroit**  
Farmington Hills, MI  
Tel: 248-538-2250  
Fax: 248-538-2260

**Indianapolis**  
Noblesville, IN  
Tel: 317-773-8323  
Fax: 317-773-5453

**Los Angeles**  
Mission Viejo, CA  
Tel: 949-462-9523  
Fax: 949-462-9608

**Santa Clara**  
Santa Clara, CA  
Tel: 408-961-6444  
Fax: 408-961-6445

**Toronto**  
Mississauga, Ontario,  
Canada  
Tel: 905-673-0699  
Fax: 905-673-6509

### ASIA/PACIFIC

**Asia Pacific Office**  
Suites 3707-14, 37th Floor  
Tower 6, The Gateway  
Harbour City, Kowloon  
Hong Kong  
Tel: 852-2401-1200  
Fax: 852-2401-3431

**Australia - Sydney**  
Tel: 61-2-9868-6733  
Fax: 61-2-9868-6755

**China - Beijing**  
Tel: 86-10-8569-7000  
Fax: 86-10-8528-2104

**China - Chengdu**  
Tel: 86-28-8665-5511  
Fax: 86-28-8665-7889

**China - Chongqing**  
Tel: 86-23-8980-9588  
Fax: 86-23-8980-9500

**China - Hangzhou**  
Tel: 86-571-2819-3180  
Fax: 86-571-2819-3189

**China - Hong Kong SAR**  
Tel: 852-2401-1200  
Fax: 852-2401-3431

**China - Nanjing**  
Tel: 86-25-8473-2460  
Fax: 86-25-8473-2470

**China - Qingdao**  
Tel: 86-532-8502-7355  
Fax: 86-532-8502-7205

**China - Shanghai**  
Tel: 86-21-5407-5533  
Fax: 86-21-5407-5066

**China - Shenyang**  
Tel: 86-24-2334-2829  
Fax: 86-24-2334-2393

**China - Shenzhen**  
Tel: 86-755-8203-2660  
Fax: 86-755-8203-1760

**China - Wuhan**  
Tel: 86-27-5980-5300  
Fax: 86-27-5980-5118

**China - Xian**  
Tel: 86-29-8833-7252  
Fax: 86-29-8833-7256

**China - Xiamen**  
Tel: 86-592-2388138  
Fax: 86-592-2388130

**China - Zhuhai**  
Tel: 86-756-3210040  
Fax: 86-756-3210049

### ASIA/PACIFIC

**India - Bangalore**  
Tel: 91-80-3090-4444  
Fax: 91-80-3090-4123

**India - New Delhi**  
Tel: 91-11-4160-8631  
Fax: 91-11-4160-8632

**India - Pune**  
Tel: 91-20-2566-1512  
Fax: 91-20-2566-1513

**Japan - Yokohama**  
Tel: 81-45-471- 6166  
Fax: 81-45-471-6122

**Korea - Daegu**  
Tel: 82-53-744-4301  
Fax: 82-53-744-4302

**Korea - Seoul**  
Tel: 82-2-554-7200  
Fax: 82-2-558-5932 or  
82-2-558-5934

**Malaysia - Kuala Lumpur**  
Tel: 60-3-6201-9857  
Fax: 60-3-6201-9859

**Malaysia - Penang**  
Tel: 60-4-227-8870  
Fax: 60-4-227-4068

**Philippines - Manila**  
Tel: 63-2-634-9065  
Fax: 63-2-634-9069

**Singapore**  
Tel: 65-6334-8870  
Fax: 65-6334-8850

**Taiwan - Hsin Chu**  
Tel: 886-3-6578-300  
Fax: 886-3-6578-370

**Taiwan - Kaohsiung**  
Tel: 886-7-213-7830  
Fax: 886-7-330-9305

**Taiwan - Taipei**  
Tel: 886-2-2500-6610  
Fax: 886-2-2508-0102

**Thailand - Bangkok**  
Tel: 66-2-694-1351  
Fax: 66-2-694-1350

### EUROPE

**Austria - Wels**  
Tel: 43-7242-2244-39  
Fax: 43-7242-2244-393

**Denmark - Copenhagen**  
Tel: 45-4450-2828  
Fax: 45-4485-2829

**France - Paris**  
Tel: 33-1-69-53-63-20  
Fax: 33-1-69-30-90-79

**Germany - Munich**  
Tel: 49-89-627-144-0  
Fax: 49-89-627-144-44

**Italy - Milan**  
Tel: 39-0331-742611  
Fax: 39-0331-466781

**Netherlands - Drunen**  
Tel: 31-416-690399  
Fax: 31-416-690340

**Spain - Madrid**  
Tel: 34-91-708-08-90  
Fax: 34-91-708-08-91

**UK - Wokingham**  
Tel: 44-118-921-5869  
Fax: 44-118-921-5820

05/02/11