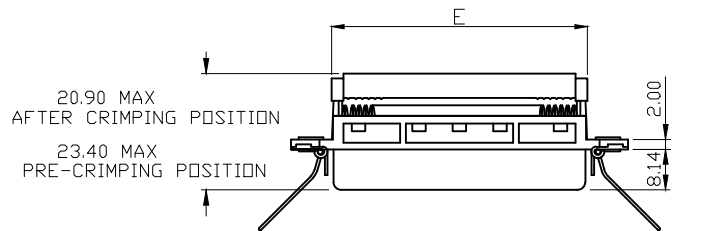


1 2 3 4 5 6 7

A

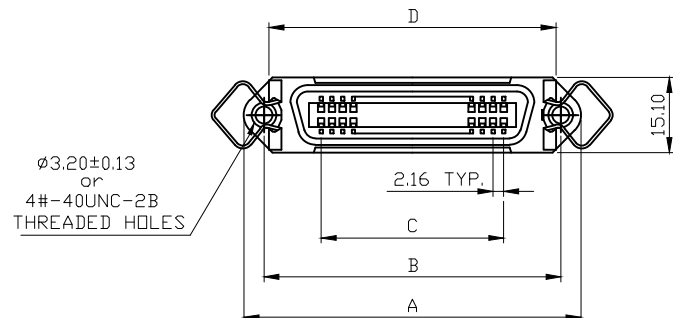


SPECIFICATIONS:

- Current rating : 1A : AWG28/1, 2A : AWG26
- Insulation resistance : $\geq 1000M\Omega$
- Dielectric withstanding volatge : 500V,at sea level
- Operating temperature : $-55^{\circ}C \sim 105^{\circ}C$ (limited by cable)
- Contact resistance : $\leq 20m\Omega$
- Dielectric material : PBT & glass reinforced,UL 94V-0
- Contact material : phosphor bronze
- Contact plating : gold over nickel
- Wire size : AWG26 & AWG28 stranded, 1.27mm conductor center flat cable
- ④ Operation temperature $-55^{\circ}C$ to $+105^{\circ}C$

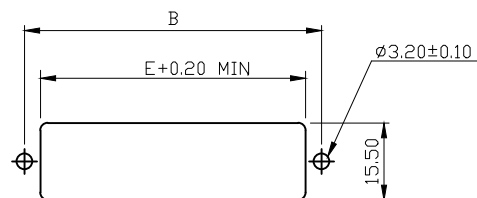
B

C

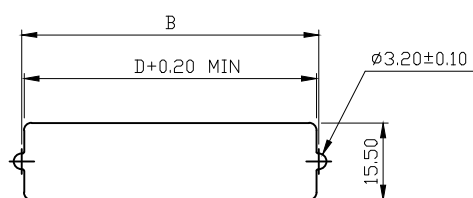


D

E



RECOMMEND FRONT MOUNT PANEL



RECOMMEND REAR MOUNT PANEL

F

53.70	51.50	58.80	36.72	59.74	67.80	5F40360M
F ±0.25	E ±0.25	D ±0.25	C ±0.13	B ±0.13	A ±0.25	

G

RoHS compliant

Scale	1:1					Date	Name	Customer-No.	
TOLERANCE						Drawn	17.05.2006	Hellwig	
X.	±0.38	④	Update	29.05.2014	Joanna	Approved	29.05.2014	Joanna	
X.X	±0.25	③	Update	13.12.2010	Alex				
X.XX	±0.13	②	Update	30.06.2009	Dean				
Angle		①	Drawn	17.05.2006	Hellwig				
X.°	±3°								
X.X°	±1°								
		Id.	Modification	Date	Name			Drawing-No.	
								ASSMANN WSW-No.	A-57/xx FFR-N A-57/xx MFR-N
								ASS 0126 CO	rev04
								Replace	Sheet

H

1 2 3 4 5 6 7