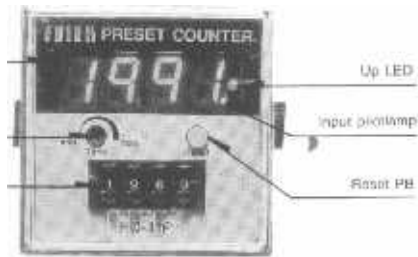


- * Hi-power supply : 100mA/12VDC
- * Hi-speed response time : 0.2ms
- * Hi-reliability with hi-anti-noise circuit.
- * Easy to test with input pilotlamp.
- * Easy to longer distance monitor with large size LED display.
- * Long time memory with Ni-Cd battery.

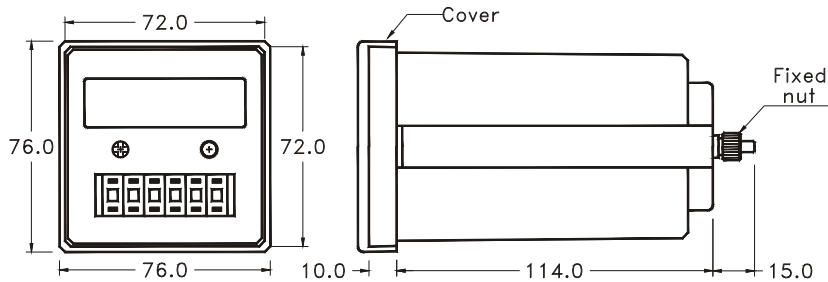


Illustration



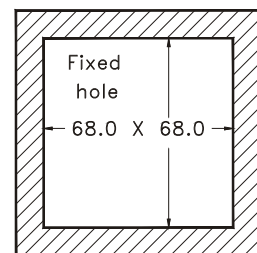
Outline & Fixed Hole

Outline



Fixed Hole

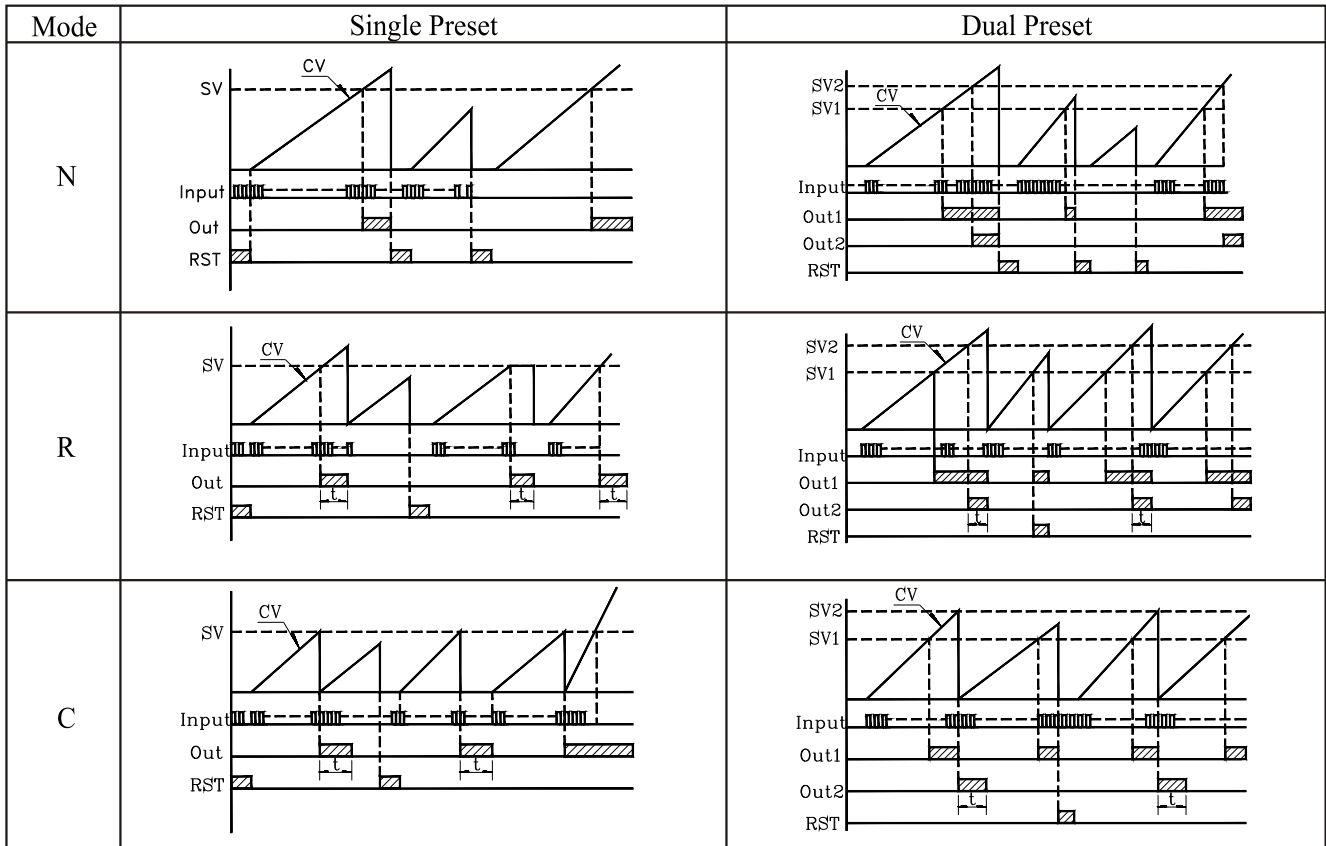
<Thickness 1~8mm>



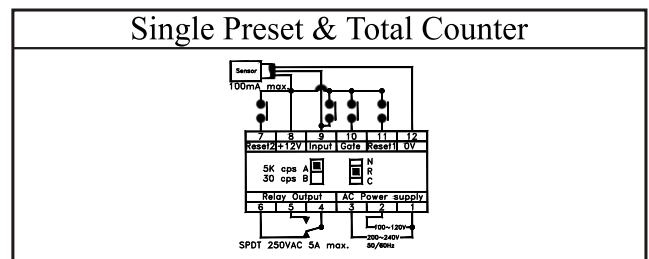
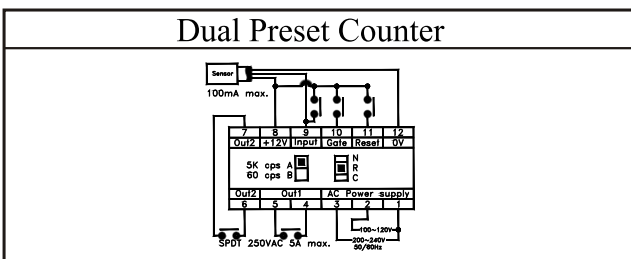
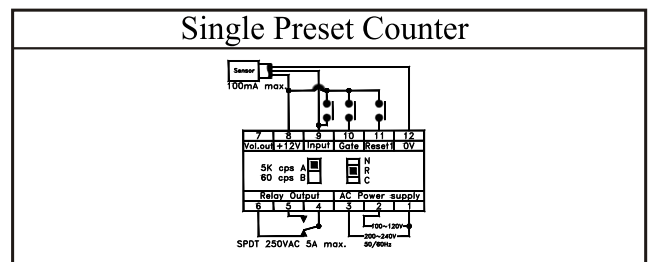
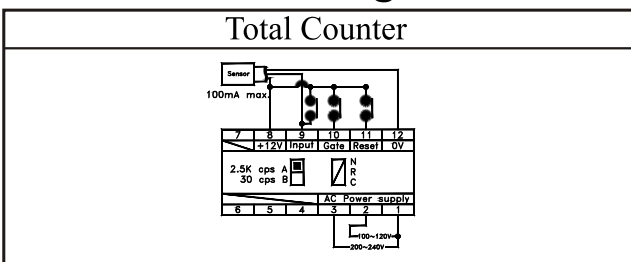
A/B Slide Switch < Response Time Selected >

| | | |
|------------|----------|---|
| Counting | L→H | $0V \leq L < 2V$, $6V \leq H < 30$ / Enabling Current $< I_e > < 3mA/12V$ |
| Mode " A " | 2.5K CPS | Cycle Duty Ratio 1:1 , Suited for Solid State Input Such As CMOS , TTL or Transister etc. |
| Mode " B " | 60 CPS | Response Time < 15ms , Suited for Contact input Such As Limit Sw , Relay or Reed SW etc. |

N/R/C Slide Switch < Output Control Selected >



Connection Diagram



HC series

DIN 72 X 72 Digital Counter

Total Counter



| | | | |
|---------------------|---|-------------------------|---------------|
| Model | HC-4T | HC-5T | HC-6T |
| Nr. of displayer | 4 digits | 5 digits | 6 digits |
| Display range | 0000~9999 | 00000~99999 | 000000~999999 |
| Display method | 0.56" 7-segment red LED | 0.36" 7-segment red LED | |
| Response frequency | Contact input < 60 cps ; Non-contact input < 2.5K cps | | |
| Operating voltage | 110/220VAC ±20% , 50/60Hz | | |
| Current Consumption | 5VA max. | | |
| Weight | Approx.650g. | | |

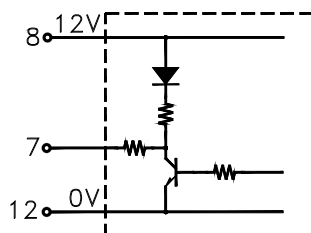
Single Preset Counter



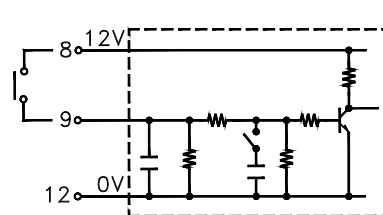
| | | | | | |
|---------------------|---|---------------|-------------------------|---------------|---------------|
| Model | HC-21P | HC-31P | HC-41P | HC-51P | HC-61P |
| Nr. of displayer | 2 digits | 3 digits | 4 digits | 5 digits | 6 digits |
| Setting range | 1~99 | 1~999 | 1~9999 | 1~99999 | 1~999999 |
| Display method | 0.56" 7-segment red LED | | 0.36" 7-segment red LED | | |
| Response frequency | Contact input < 60 cps ; Non-contact input < 2.5K cps | | | | |
| Output method | Relay output 1a / 1b , 5A/250VAC max. Voltage output NPN , 150mA max. | | | | |
| Output control | N.R.C. control | | | | |
| Operating voltage | 110/220VAC ±20% , 50/60Hz | | | | |
| Current Consumption | 5VA max. | | | | |
| Weight | Approx.650g. | | | | |

Interface Circuit

Voltage Output < 7th Pin >



Input < 9th Pin >



Dual Preset Counter



| Model | HC-42P | HC-52P | Standard type : 1st preset output is controlled by 2nd preset output with N.R.C. Optional type : 1st preset output is controlled with one shot < 0.1s > , 2nd preset output is controlled with N.R.C. |
|---------------------|--|----------------------------|--|
| Nr.of displayer | 4 digits | 5 digits | |
| Setting range | 1 st 1~9999 2md 1~9999 | 1st 1~99999 2nd 1~99999 | |
| Display method | 0.36" 7-segment red LED | | |
| Response frequency | High Speed<2.5K cps ; Low Speed<60 cps | | |
| Output method | Two relays , 1a 5A/250VAC | | |
| Output control | N.R.C control | | |
| Operating voltage | 110/220VAC ± 20% , 50/60Hz | | |
| Current consumption | 5VA max. | | |
| Weight | Approx. 700g. | | |

Single Preset & Total Counter



| Model | HC-4P6T | Standard type : The total Counter is synchronously Counting with the preset counter. Optional type : The total Counter Counts when preset counter output.<HC-4P6TA> |
|---------------------|--------------------------------------|--|
| Nr.of displayer | Preset 4 digits , total 6 digits | |
| Display range | 0000~9999 & 000000~999999 | |
| Setting range | 1~9999 | |
| Display method | 0.36" 7-segment red LED | |
| Response frequency | High Speed<1K cps ; Low Speed<60 cps | |
| Output method | Relays | |
| Output control | N.R.C control | |
| Operating voltage | 110/220VAC ± 20% , 50/60Hz | |
| Current consumption | 5VA max. | |
| Weight | Approx. 700g. | |

Interface Circuit

