

**PLEASE CHECK WWW.MOLEX.COM FOR LATEST PART INFORMATION**

**Part Number:** [0492290210](#)  
**Status:** **Active**  
**Description:** 3.90mm (.154") Pitch Wire-to-Wire Plug Housing, with TPA™, Single Row, 2 Circuits

**Documents:**

[Drawing \(PDF\)](#) [RoHS Certificate of Compliance \(PDF\)](#)  
[Product Specification PS-49228-001 \(PDF\)](#)

**General**

Product Family	Crimp Housings
Series	<a href="#">49229</a>
Product Name	N/A

**Physical**

Circuits (maximum)	2
Gender	Male
Glow-Wire Compliant	No
Lock to Mating Part	Yes
Number of Rows	1
Packaging Type	Bag
Panel Mount	No
Pitch - Mating Interface (in)	0.154 In
Pitch - Mating Interface (mm)	3.90 mm
Polarized to Mating Part	Yes
Temperature Range - Operating	-30°C to +85°C

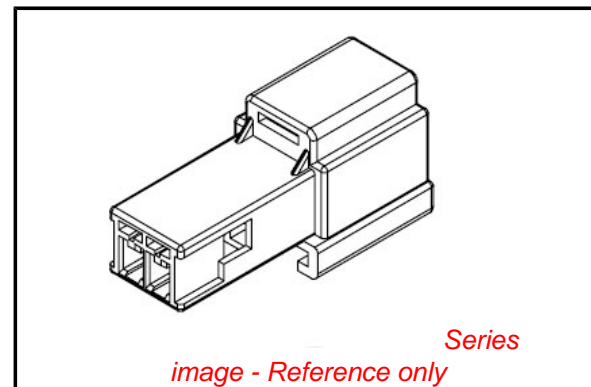
**Electrical**

Current - Maximum per Contact	18A
-------------------------------	-----

**Material Info**

**Reference - Drawing Numbers**

Product Specification	PS-49228-001
Sales Drawing	SD-49229-001



**EU RoHS**

**ELV and RoHS  
Compliant**  
**REACH SVHC**  
 Not Reviewed  
**Halogen-Free  
Status**

**China RoHS**



**Need more information on product  
environmental compliance?**

Email [productcompliance@molex.com](mailto:productcompliance@molex.com)  
 For a multiple part number RoHS Certificate of  
 Compliance, [click here](#)

Please visit the [Contact Us](#) section for any  
 non-product compliance questions.

**Search Parts in this Series**  
[49229Series](#)

**Mates With**  
[49228-0210](#) Housing

**Use With**  
[57919](#) Terminals

DWG. NO. SD-49229-001

SIMILAR ITEM

PROJECT NO.

m

D

C

B

DO NOT SCALE DRAWING  
DIMENSION IN METRIC

12 11 10 9 8 7 6 5 4 3 2 1

H

G

F

E

D

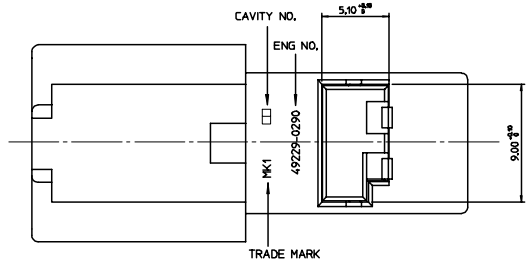
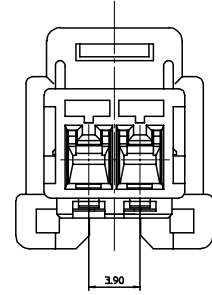
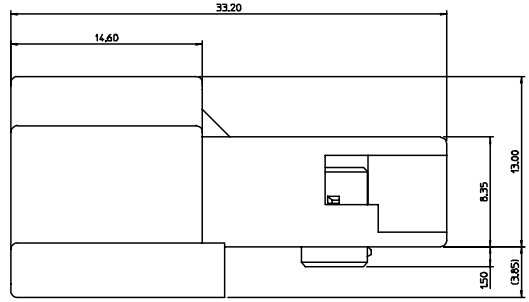
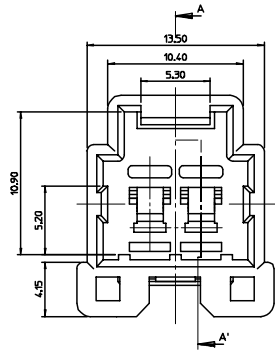
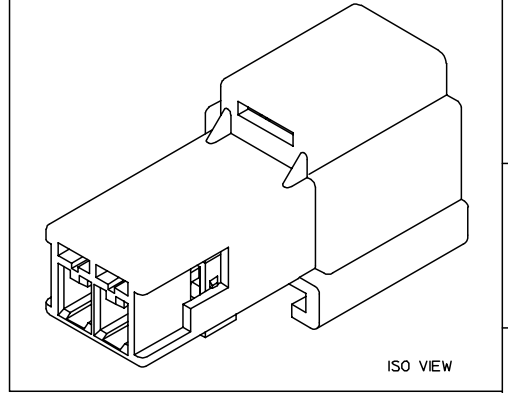
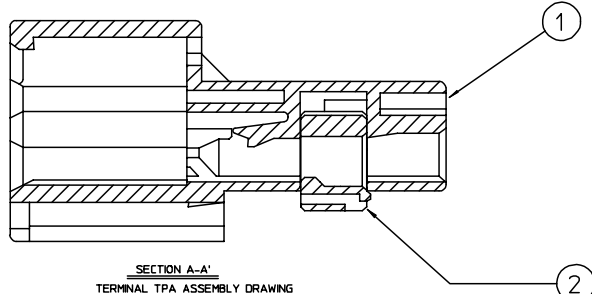
C

B

A

KOREA

MX-A2



NO.	PART NO.	PART NAME	REMARK
1	49229-0290	.090 M/HSG 2P	NATURAL
2	49229-0283	.090 M/TPA 2P	YELLOW
3	49229-0210	.090 M/HSG ASS'Y 2P	-

<NOTE>

1. MATERIAL : POLYESTER(PBT) UL 94HB
2. APPLICABLE TERMINAL : 57919-6702 (AVS,CAVS 0.3-0.5)  
57919-6802 (AVS,CAVS 0.85-1.25)  
57919-6902 (AVSS,CAVS 2.0)
3. APPLICABLE FEMALE HOUSING ASS'Y 2P : 49228-0210

NEW PRODUCT RELEASE ECN NO. KOR2006-0059 DRWNG. Y.PARK 05/17/28 CHKG. S.H.KIM 05/17/28 APPROVAL: O.S. YU 05/17/28	QUALITY SYMBOLS MAJOR CRITICAL	GENERAL TOLERANCES: (UNLESS SPECIFIED)	SCALE 4:1	DESIGN UNITS <input checked="" type="checkbox"/> mm <input type="checkbox"/> INCH	THIRD ANGLE PROJECTION	DIMENSIONS: <input type="checkbox"/> mm <input type="checkbox"/> INCH <input type="checkbox"/> mm ONLY	SHT REV
		4 PLACES ±0.15 ±	DRAWN BY & DATE S.Y.PARK 05/02/25	TITLE: 090 MALE HOUSING 2P	REVISION ON CAD ONLY		
REV A	DRAFT WHERE APPLICABLE MUST REMAIN WITHIN DIMENSIONS	3 PLACES ±0.20 ±	CHECKED BY & DATE S.H.KIM 05/02/25	APPROVED BY & DATE B.E.YOON 05/02/25		MOLEX INCORPORATED	
		2 PLACES ±0.15 ±	CAD FILE NAME SD49229.M	MATERIAL NO. SEE TABLE	DRAWING NO. SD-49229-001	SHEET NO. 1 OF 1	
		1 PLACE ±0.20 ±	THIS DRAWING CONTAINS INFORMATION THAT IS PROPRIETARY TO MOLEX INCORPORATED AND SHOULD NOT BE USED WITHOUT WRITTEN PERMISSION.		SIZE C		

12 11 10 9 8 7 6 5 4 3 2 1