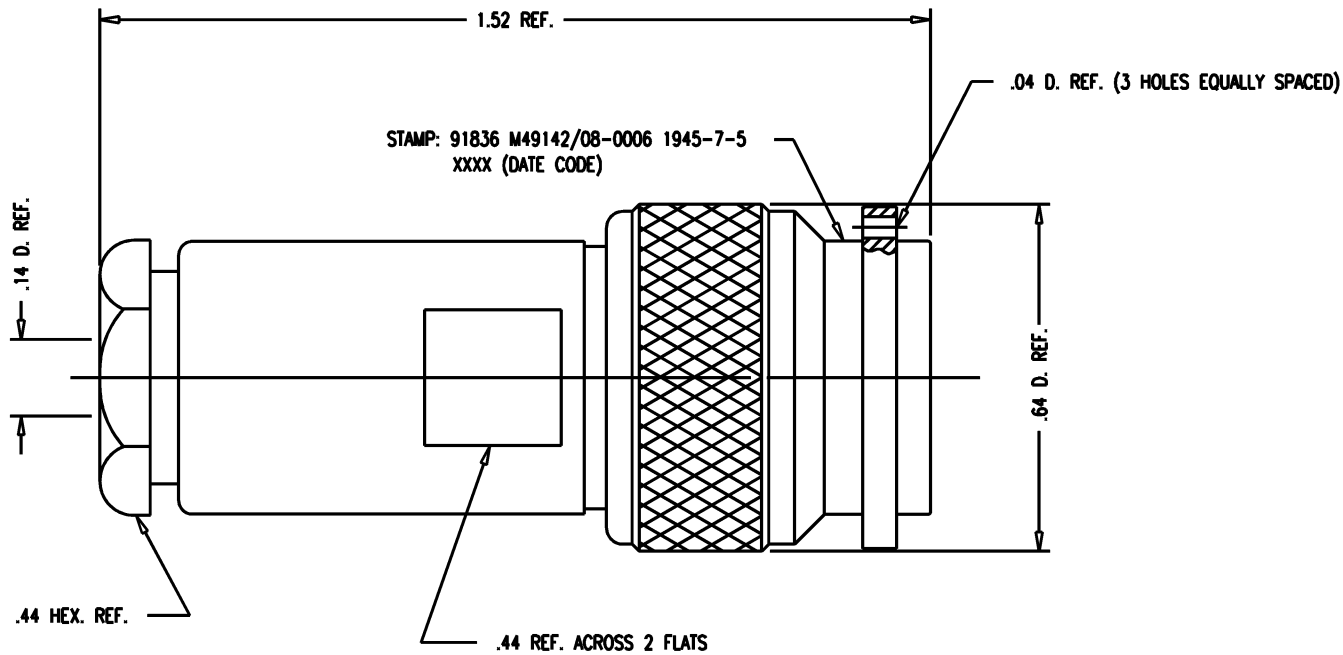


GSD

M49142/08-0006



NOTES:

1. FOR USE WITH M17/176-00002 CABLE.
2. FOR CABLING INSTRUCTIONS SEE 3-395.
3. INTERFACE PER MIL-STD-348, FIG. 202-1.
4. MATERIALS:
 - INSULATORS-TEFLON, ASTM-D-1457
 - GASKET } SILICONE RUBBER, ZZ-R-765
 - O-RING }
 - INTERMEDIATE CONTACT } BERYLLIUM COPPER, ASTM-B-196
 - OUTER CONTACT }
 - ALL OTHER METAL PARTS-BRASS, ASTM-B16
5. FINISHES:
 - CENTER CONTACT-GOLD PLATE PER MIL-C-45204
 - ALL OTHER METAL PARTS-SILVER PLATE PER QQ-S-365
6. ELECTRICAL CHARACTERISTICS:
 - WORKING VOLTAGE-400 VRMS

REVISIONS

| ISSUE | CHANGES |
|-------|---------------------------------------|
| 4 | CN 34823 C REDRAWN JCA 08/04/93 |

JCA4189

| | |
|---|---------------|
| SCALE 4:1 | |
| APPROX SURFACE AREA | |
| 1945-7-5 | |
| USED ON | |
| REF: | |
| PLUG, TRT | |
| DRAWN JCA | DATE 08/04/93 |
| DESIGN MJB | DATE 08/05/93 |
| APPR. | DATE |
| KINGS ELECTRONICS CO., INC. TUCKAHOE, NEW YORK 10707 | |
| M49142/08-0006 | |

GSD